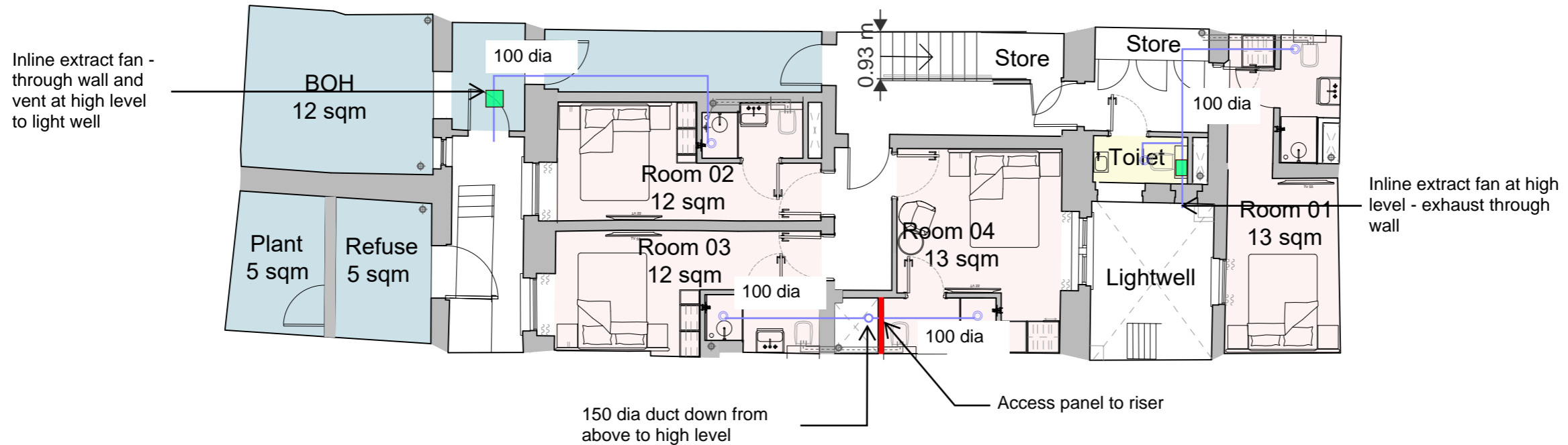


Legend

- 100Ø extract valve
- Extract ductwork

GENERAL NOTES

1. DO NOT SCALE FROM THIS DRAWING
2. THE CONTRACTOR MUST VERIFY ALL DIMENSIONS, TOLERANCES AND REFERENCES BEFORE PROCEEDING WITH WORKS
3. ANY DISCREPANCY FOUND BETWEEN THIS DRAWING AND OTHER DOCUMENTS MUST BE REPORTED TO THE CONTRACT ADMINISTRATOR
4. REMOVE THIS DRAWING FROM CURRENCY WHEN REVISED DRAWING IS ISSUED
5. COPYRIGHT OF DESIGNS SHOWN ON THIS DRAWING REMAIN WITH ELEMENTA CONSULTING LTD.
6. THIS DRAWING IS TO BE READ IN CONJUNCTION WITH THE SPECIFICATION AND ALL OTHER CONTRACT PROJECT DOCUMENTS
7. THE CONTRACTOR SHALL REFER TO ARCHITECTS OR INTERIOR DESIGN DRAWINGS INCLUDING REFLECTED CEILING PLANS AND OTHER SPECIALIST DRAWINGS FOR SETTING OUT ALL VISIBLE WALL AND CEILING MOUNTED EQUIPMENT



NOTE

1. Service risers to be formed to provide concealed routing for ventilation ductwork and other services as part of the payout alteration work. Riser construction to meet the performance requirements as set out within the fire safety statement in order to resist the spread of fire between and floors and rooms.
2. Room layouts reflect previously consented scheme application ref. 2024/1614/L and 2024/1264/P.

A1 ORIGINAL SIZE DRAWING			
PN3 Stage 2	SAC	27/11/2024	
PN2 Stage 2	SAC	19/11/2024	
PN1 Stage 2	SAC	06/09/2024	
No.	REVISION	CHK	DATE

Introba
 London Design Studio
 150 Holborn
 London, EC1N 2NS
 t: +44(0)203 6979300
 e: hello@introba.com
 www.introba.com

CLIENT	
Garth Hotel Limited	
PROJECT	
69 Gower Street	
TITLE	
Lower Ground Floor - Proposed Ventilation Sketch	
DATE CREATED	SCALE
2024.09.04	1:100 @A3
DESIGNED	CHECKED
TDB	TH
APPROVED	SAC
SUITABILITY CODE	SUITABILITY DESCRIPTION
S2	Preliminary
DRAWING STATUS	
Stage 2	
DRAWING No.	REVISION
10499-IRB-XX-LG-S-M-5701	P02