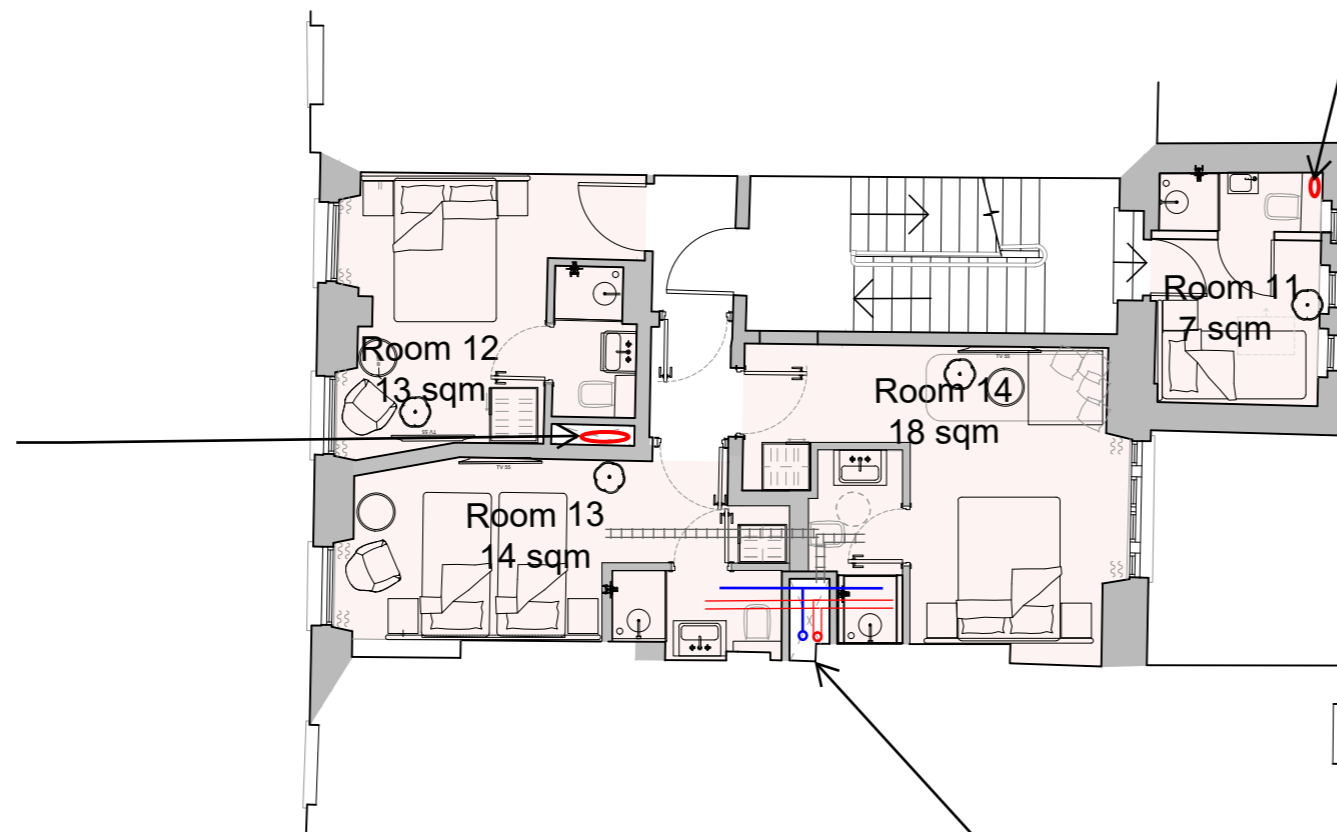


DHW 2pipes
BCWS 1pipe
VRF 3 pipes

Within riser from
below to above



DHW/BCWS/VRF

Rise from below to
serve guest room

DHW/BCWS/VRF
from riser to room

NOTE

1. Service risers to be formed to provide concealed routing for ventilation ductwork and other services as part of the payout alteration work. Riser construction to meet the performance requirements as set out within the fire safety statement in order to resist the spread of fire between and floors and rooms.

2. Room layouts reflect previously consented scheme application ref. 2024/1614/L and 2024/1264/P.

GENERAL NOTES

- DO NOT SCALE FROM THIS DRAWING
- THE CONTRACTOR MUST VERIFY ALL DIMENSIONS, TOLERANCES AND REFERENCES BEFORE PROCEEDING WITH WORKS
- ANY DISCREPANCY FOUND BETWEEN THIS DRAWING AND OTHER DOCUMENTS MUST BE REPORTED TO THE CONTRACT ADMINISTRATOR
- REMOVE THIS DRAWING FROM CURRENCY WHEN REVISED DRAWING IS ISSUED
- COPYRIGHT OF DESIGNS SHOWN ON THIS DRAWING REMAIN WITH ELEMENTA CONSULTING LTD.
- THIS DRAWING IS TO BE READ IN CONJUNCTION WITH THE SPECIFICATION AND ALL OTHER CONTRACT PROJECT DOCUMENTS
- THE CONTRACTOR SHALL REFER TO ARCHITECTS OR INTERIOR DESIGN DRAWINGS INCLUDING REFLECTED CEILING PLANS AND OTHER SPECIALIST DRAWINGS FOR SETTING OUT ALL VISIBLE WALL AND CEILING MOUNTED EQUIPMENT

Legend

LTHW = Low Temperature Hot Water
DHW = Domestic Hot Water
BCWS = Boosted Cold Water Services
VRF = Variable Refrigerant Flow

A1 ORIGINAL SIZE DRAWING			
P03	Stage 2	SAC	27/11/2024
P02	Stage 2	SAC	19/11/2024
P01	Stage 2	SAC	06/09/2024
No.	REVISION	CHK	DATE

Introba
London Design Studio
150 Holborn
London, EC1N 2NS
t: +44(0)203 6979300
e: hello@introba.com
www.introba.com

CLIENT
Garth Hotel Limited

PROJECT
69 Gower Street

TITLE
Second Floor - Proposed Mechanical and Domestic Distribution Sketch

DATE CREATED 2024.09.04	SCALE 1:100 @A3
DESIGNED TDB	CHECKED TH
APPROVED SAC	

SUITABILITY CODE S2	SUITABILITY DESCRIPTION Preliminary
DRAWING STATUS Stage 2	

DRAWING No. 10499-IRB-XX-02-S-Z-5001	REVISION P02
---	-----------------