

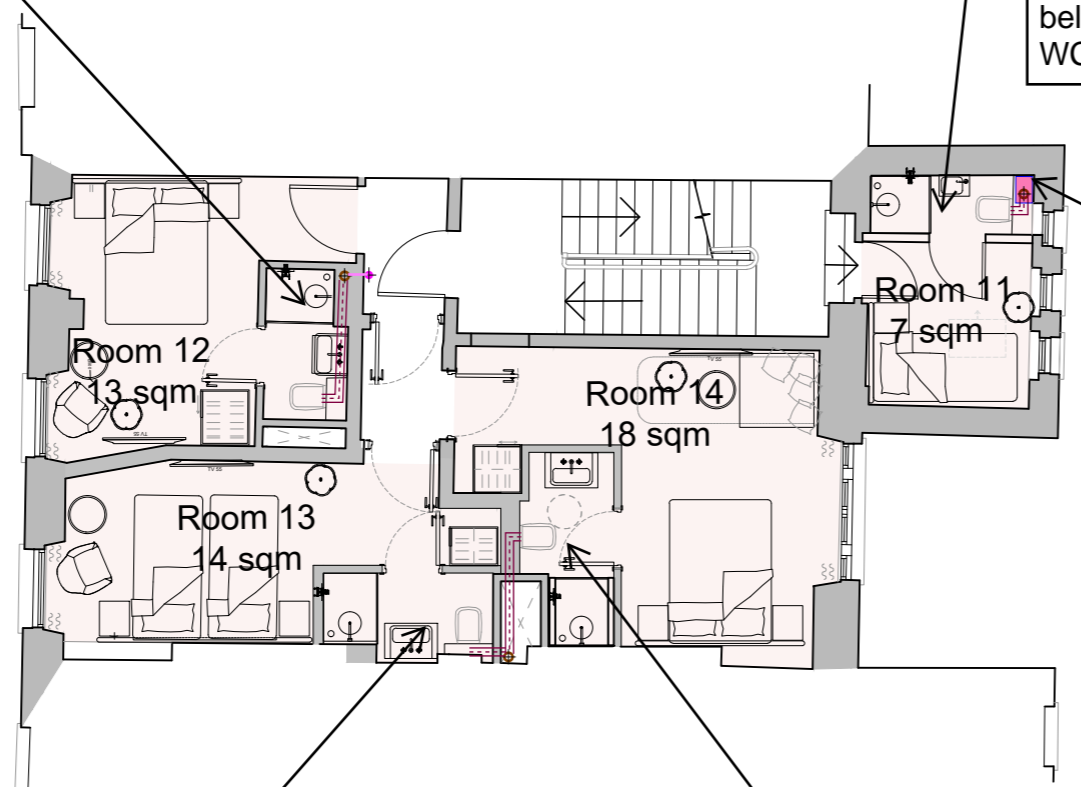
SH - 40mm waste connect to stack at L/L  
 WHB - 32mm waste offset at L/L  
 WC - 100mm waste offset at L/L

SH - 40mm waste drop to below and offset at H/L  
 WHB - 32mm waste drop to below and offset at H/L  
 WC - 100mm waste offset at L/L

200 x 400 box out

SH - 40mm waste drop to below and offset at high level  
 WHB - 32mm waste offset at low level (boxing)

SH - 40mm waste drop to below and offset at high level  
 WHB - 32mm waste drop to below and offset at H/L



- GENERAL NOTES**
- DO NOT SCALE FROM THIS DRAWING
  - THE CONTRACTOR MUST VERIFY ALL DIMENSIONS, TOLERANCES AND REFERENCES BEFORE PROCEEDING WITH WORKS
  - ANY DISCREPANCY FOUND BETWEEN THIS DRAWING AND OTHER DOCUMENTS MUST BE REPORTED TO THE CONTRACT ADMINISTRATOR
  - REMOVE THIS DRAWING FROM CURRENCY WHEN REVISED DRAWING IS ISSUED
  - COPYRIGHT OF DESIGNS SHOWN ON THIS DRAWING REMAIN WITH ELEMENTA CONSULTING LTD.
  - THIS DRAWING IS TO BE READ IN CONJUNCTION WITH THE SPECIFICATION AND ALL OTHER CONTRACT PROJECT DOCUMENTS
  - THE CONTRACTOR SHALL REFER TO ARCHITECTS OR INTERIOR DESIGN DRAWINGS INCLUDING REFLECTED CEILING PLANS AND OTHER SPECIALIST DRAWINGS FOR SETTING OUT ALL VISIBLE WALL AND CEILING MOUNTED EQUIPMENT

- Legend**
- SVP = Soil Vent Pipe
  - AAV = Air Admittance Valve
  - SH = Shower
  - WHB = Wash Hand Basin
  - WC = Water Closet
  - L/L = Low Level
  - H/L = High Level

A1 ORIGINAL SIZE DRAWING			
PO3	Stage 2	SAC	27/11/2024
PO2	Stage 2	SAC	19/11/2024
PO1	Stage 2	SAC	06/09/2024
No.	REVISION	CHK	DATE

**Introba**  
 London Design Studio  
 150 Holborn  
 London, EC1N 2NS  
 t: +44(0)203 6979300  
 e: hello@introba.com  
 www.introba.com

CLIENT	Garth Hotel Limited
PROJECT	69 Gower Street
TITLE	Second Floor - Proposed Drainage Sketch
DATE CREATED	2024.09.04
SCALE	1:100 @A3
DESIGNED	TDB
CHECKED	TH
APPROVED	SAC
SUITABILITY CODE	S2
SUITABILITY DESCRIPTION	Preliminary
DRAWING STATUS	Stage 2
DRAWING NO.	10499-IRB-XX-02-S-P-5201
REVISION	P02

**NOTE**

- Service risers to be formed to provide concealed routing for ventilation ductwork and other services as part of the payout alteration work. Riser construction to meet the performance requirements as set out within the fire safety statement in order to resist the spread of fire between and floors and rooms.
- Room layouts reflect previously consented scheme application ref. 2024/1614/L and 2024/1264/P.