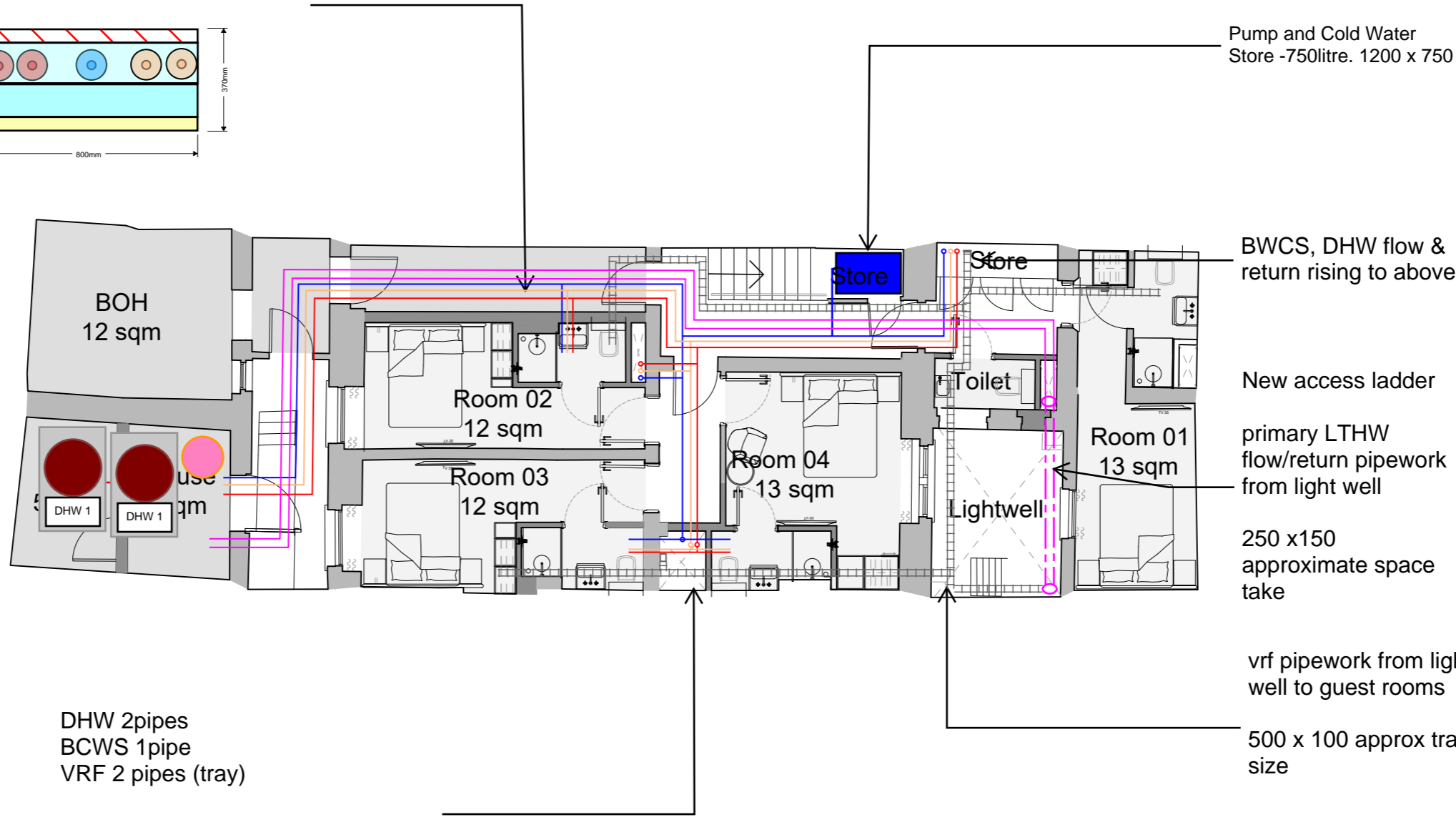
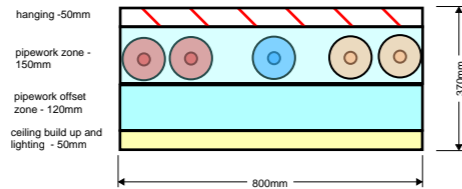


LTHW Flow/Return (2 Pipes)
 BCWS (1pipe)
 DHW flow/return (2 pipes)



DHW 2pipes
 BCWS 1pipe
 VRF 2 pipes (tray)

Within riser to distribute around the building.
 Single riser from basement to roof

Pump and Cold Water
 Store -750litre. 1200 x 750

Store
 Store
 BWCS, DHW flow & return rising to above

New access ladder

primary LTHW
 flow/return pipework
 from light well

250 x150
 approximate space
 take

vrf pipework from light
 well to guest rooms

500 x 100 approx tray
 size

NOTE

1. Service risers to be formed to provide concealed routing for ventilation ductwork and other services as part of the payout alteration work. Riser construction to meet the performance requirements as set out within the fire safety statement in order to resist the spread of fire between and floors and rooms.

2. Room layouts reflect previously consented scheme application ref. 2024/1614/L and 2024/1264/P.

GENERAL NOTES

- DO NOT SCALE FROM THIS DRAWING
- THE CONTRACTOR MUST VERIFY ALL DIMENSIONS, TOLERANCES AND REFERENCES BEFORE PROCEEDING WITH WORKS
- ANY DISCREPANCY FOUND BETWEEN THIS DRAWING AND OTHER DOCUMENTS MUST BE REPORTED TO THE CONTRACT ADMINISTRATOR
- REMOVE THIS DRAWING FROM CURRENCY WHEN REVISED DRAWING IS ISSUED
- COPYRIGHT OF DESIGNS SHOWN ON THIS DRAWING REMAIN WITH ELEMENTA CONSULTING LTD.
- THIS DRAWING IS TO BE READ IN CONJUNCTION WITH THE SPECIFICATION AND ALL OTHER CONTRACT PROJECT DOCUMENTS
- THE CONTRACTOR SHALL REFER TO ARCHITECTS OR INTERIOR DESIGN DRAWINGS INCLUDING REFLECTED CEILING PLANS AND OTHER SPECIALIST DRAWINGS FOR SETTING OUT ALL VISIBLE WALL AND CEILING MOUNTED EQUIPMENT

Legend

LTHW = Low Temperature Hot Water
 DHW = Domestic Hot Water
 BCWS = Boosted Cold Water Services
 VRF = Variable Refrigerant Flow

A1 ORIGINAL SIZE DRAWING			
PROJ	Stage 2	SAC	27/11/2024
PRJ2	Stage 2	SAC	18/11/2024
PRJ1	Stage 2	SAC	06/09/2024
No.	REVISION	CHK	DATE

Introba
 London Design Studio
 150 Holborn
 London, EC1N 2NS
 t: +44(0)203 6979300
 e: hello@introba.com
 www.introba.com

CLIENT		Garth Hotel Limited	
PROJECT		69 Gower Street	
TITLE		Lower Ground Floor - Proposed Mechanical and Domestic Distribution Sketch	
DATE CREATED	2024.09.04	SCALE	NTS
DESIGNED	TDB	CHECKED	TH
APPROVED		APPROVED	SAC
SUITABILITY CODE	S2	SUITABILITY DESCRIPTION	Preliminary
DRAWING STATUS		Stage 2	
DRAWING No.	10499-IRB-XX-LG-S-Z-5001	REVISION	P02