

Council Tax and Business Rates Division

Camden Town Hall, Judd Street, London WC1H 8NH

Telephone: 020 7974 6470 - Lines open 8am to 5pm, Monday to Friday

Fax: 020 7974 6450

Central Minicom No. 020 7974 6866

Email: revenues@camden.gov.uk



Camden

Reminder

Data Protection Act 1998: We may share the information you give us with other council departments and other local or central agencies if the law allows this.

Issue Date: 18/05/2023

Account Ref: 85056390

SPARTA CAPITAL PROPERTIES LIMITED
73 METOCHIOU STREET
EGKOMI
NICOSIA
CYPRUS
2407
2407

COUNCIL TAX REMINDER

Property Address:
FLAT 2ND FLOOR
29-31 PARKWAY

Our Records show that you are behind with your Council Tax instalments for the financial year 2023 and you owe £158.00.

This amount is now overdue and should reach us no later than 14 days from the date of this letter. It is important that you do not ignore this letter otherwise the next stage is to cancel the instalment arrangement and issue a summons. This could mean that you will have to pay the full Tax for the year of £1,738.00 plus costs of £95.00.

Please ensure that future payments reach us by the due dates to avoid losing the right to pay by instalments and the issue of a summons.

As this is the last reminder we will send you for this financial year, please ensure that future payments reach us by the due dates to avoid losing the right to pay by instalments and the issue of a summons

If you are having difficulty in paying, or have a query about the amount due please telephone or email us on the above contact details.

To avoid the worry of paying late why not pay by Direct Debit? You'll get a choice of paying on either the 7th, 15th, 21st or the last day of the month and we can set up your Direct Debit over the telephone. Just call us on 020 7974 6470.



9826 0054 1800 0085 0563 9006

Please see over the page for details of how to pay.

Notes to explain your reminder

We have sent you this reminder because you have not paid the instalments shown on your bill by the due date.

If you want to carry on paying by instalments, you must pay the amount shown over the page by the date shown, or you will lose the right to pay by instalments.

After another seven days, the full balance of your Council Tax will become due. A summons will be issued and you will have to pay costs. **Do not let this happen to you.** Please pay the amount shown over the page by the date shown and any future instalments by the due dates shown on your bill.

Please read the notes below.

You may be able to reduce your Council Tax.

If you cannot afford to pay, we may be able to make an arrangement with you if you agree to pay by direct debit. Please read the following notes carefully - they may save you money.

Discounts

The basic Council Tax charge covers two adults aged 18 or over living in the property. If you are the only person living in the property, you will get a 25% discount, from the day you apply. A discount will not be granted, if the property remains empty and furnished. Those that are substantially unfurnished, receive a 100% discount for one month only. If it is undergoing major repairs or structural alterations, a 25% discount is applicable for 12 months, provided it remains empty and meets the qualifying criteria.

Other people may also get a discount or exemption, for example, students, student nurses and people who are severely mentally impaired. If you receive a discount and your circumstances change, you must notify us within 21 days. If you do not tell us about any changes, you may have to pay a penalty of £70

People with disabilities

If you or any member of your household is disabled and part or

all of your home has been adapted, you can claim disability relief. If your claim is successful, we will reduce your bill by the equivalent of one band.

Council Tax Reduction Scheme

This can help towards some of your Council Tax. Whether you receive help depends on the amount you have to pay, your personal circumstances, income and savings. You must make an application before any support can be given, which will only be from the date of your claim.

If you are of working age and your application is successful, you will still be required to pay something towards your council tax, even if you receive the maximum support available. To apply, ring our 24-hour helpline on 020 7974 4444 and select Housing Benefits.

Complaints

If you have a complaint, please contact us either in writing or by phone using the contact details on the front. We aim to resolve complaints locally and speedily in

the first instance. If you have done this and are not satisfied with our response, then you can ask for your complaint to be passed to a review stage, or submit your complaint online using the Council's website.

More information

If you want help understanding your reminder or want to talk about a discount or exemption, please ring us on the number shown over the page. If you have difficulty paying, please call us now. We may be able to make other arrangements for you to pay. Don't put off contacting us – we will do whatever we can to help you. There is more information on our website at www.camden.gov.uk We may monitor calls for training purposes.

Warning

If you provide false information and claim a reduction in your council tax, which you are not entitled to, we will try to recover what has been unfairly claimed. To prevent this, you must let us know as soon as your circumstances change.

Ways to pay



Credit or Debit card

To pay by direct debit or credit card visit our website (www.camden.gov.uk/pay) and follow the instructions on the screen. Alternatively, you can telephone 020 7974 6104 and make a payment. Make sure that you have your card details and council tax account number to hand.



At a Post Office

You can pay by cash, cheque or debit card at any Post Office. In order to make a payment, take this reminder to any post office. Please ensure you keep your receipt as proof of payment. You need to allow at least 3 working days for the payment to reach your account. When paying in person, cheques should be made payable to "Post Office Counters Ltd". There is no charge for this service.



By post

You should make your cheques and postal orders payable to "LB Camden, (CTax)". Please write your Council Tax account number on the back and send it with your payment slip at least three days before the payment is due.

The address is:

London Borough of Camden
Chief Cashier
Camden Town Hall
Judd Street
London WC1H 9JE.



Paypoint

You can pay in cash at any shop where you see the Paypoint sign. There is no charge for using this service. Please make sure you take your reminder with you.



Internet or Phone Banking

Please pay to Camden Council Tax, account number 24314463, sort code 50-30-03. You must quote your council tax account reference, which is shown on the reverse of this notice. This starts with a 7 or 8.

Please make sure you allow time for your payment to reach us by the due date.



020 7974 6470
Mon-Fri 8am-6pm



revenues@camden.gov.uk



PO Box 785,
Redhill, RH1 9JB

Bill date: 05/03/2024

Your Account Number: 85056390

SPARTA CAPITAL PROPERTIES
LIMITED
FLETCHER KING
19-20 GREAT PULTENEY STREET
LONDON
W1F 9NF

Council Tax bill for FLAT 2ND FLOOR, 29-31 PARKWAY, LONDON, NW1 7PN

Reason for Bill: Your Council Tax bill for the new tax year which starts on 1 April.

How we worked out your bill

The property is in Valuation Band D	
Full rate from 01/04/2024 to 31/03/2025	£2010.57
Unoccupied and unfurnished for more than 1 month (no discount) from 01/04/2024 to 31/03/2025 inclusive	£0.00
Your balance	£2010.57

Your instalments

01/04/2024	£162.57
01/05/2024	£168.00
01/06/2024	£168.00
01/07/2024	£168.00
01/08/2024	£168.00
01/09/2024	£168.00
01/10/2024	£168.00
01/11/2024	£168.00
01/12/2024	£168.00
01/01/2025	£168.00
01/02/2025	£168.00
01/03/2025	£168.00

You also have an outstanding balance of **£158.00** for previous years. If you have not already done so, please contact us immediately to make an arrangement so that any further recovery action can be avoided.

How to pay: please quote Your Account Number (above) when paying



To set up a Direct Debit call 020 7974 6470 or visit www.camden.gov.uk/pay



Call our 24 hour automated Payments Line on 020 7974 6104



Pay online by debit or credit card at www.camden.gov.uk/pay



Pay at the PayPoint using your barcode.



9826 0054 1800 0085 0563 9006



Pay online/telephone banking:
Bank Sort Code: 50-30-03
Bank Account Number: 24314463
Name of Account: LB CAMDEN CTAX



If you do not hold a UK bank account then please also include:
SWIFT / BIC Code: NWBK GB 2L
IBAN: GB20 NWBK 503003 24314463



Pay by cash, cheque (made payable to Post Office Ltd and put your account number on the back) or debit card.
Allow 2 working days.

Additional Information

Discounts and exemptions

You may be able to reduce your Council Tax bill. Some of the discounts and exemptions available are listed below; however visit www.camden.gov.uk to find details of all the discounts and exemptions that are available and the supporting evidence you need to supply when making an application



Occupied property discounts or exemptions

The Council Tax full rate is based on the assumption that two or more adults live in the property. Be sure to tell us who lives in your household so you pay the right amount.

-If you are the only adult aged over 18 living in your household, you can apply for a 25% Single Person Discount.

If you or any member of your household is

-a full time student, you may not need to pay the Council Tax or you may be able to pay less. To apply, send us a current full time certificate from your place of study by visiting <https://www.camden.gov.uk/council-tax-student-discounts>

-severely mentally impaired, please visit <https://www.camden.gov.uk/council-tax-discounts-people#pxcu> for information and to start your application or let us know and we will send you a form.

-disabled and your home has been adapted because of this, you can apply for Disablement Relief. If your claim is successful, your Council Tax will be charged at the band below yours.



Unoccupied property discounts or exemptions

If your property becomes unoccupied, let us know if the property is furnished, unfurnished or uninhabitable. If the property is unoccupied and also:

-furnished, you must tell us, however no discount applies.

-unfurnished, you may be able to pay no Council Tax for up to 1 month.

-Uninhabitable (must be unfurnished), you may be able to apply for a 25% discount for up to 12 months.

Don't delay telling us as we may need to arrange for a Council Tax inspector to visit the property to confirm your request.

Premium

If your property remains empty for 2 years and over, your Council Tax will double (a premium of 100%) each year.

If your property remains empty for 5 years and over, a 200% premium is payable each year.

If your property remains empty for 10 years and over, a 300% premium is payable each year

Council Tax Support

This can help to reduce all or some of your Council Tax if you are on a low income and have savings under £16,000. To apply, call 020 7974 5950, write to PO BOX 784 Redhill, RH1 9JB, email benefits@camden.gov.uk or go to www.camden.gov.uk/housing-benefit

Complaints

If you wish to submit a formal complaint please visit www.camden.gov.uk/complaints. Alternatively you can contact us by phone on 020 7974 4444 or write to the address shown overleaf. Please state clearly you are making a complaint and the reasons.

Appeals

If you have made a change to your property, or you think your property band is incorrect, visit www.gov.uk/contact-voa. If you appeal you must still pay this bill.

Discretionary Reduction

In exceptional circumstances, the Council can reduce your Council Tax under Section 13a of the Local Government Finance Act 1992.

Visit <https://www.camden.gov.uk/discretionary-reductions-for-exceptional-circumstances>

Council Tax Valuation Bands

Council Tax is charged on most properties. Each property belongs in one of eight bands depending on its market value on 1 April 1991.

Valuation Band: Range of market values:

A	Up to and including £40,000
B	£40,001 to £52,000
C	£52,001 to £68,000
D	£68,001 to £88,000
E	£88,001 to £120,000
F	£120,001 to £160,000
G	£160,001 to £320,000
H	More than £320,000

Your Property is in Valuation Band D

	Change from last year	Amount
London Borough of Camden general expenditure	3.0%	£1316.75
London Borough of Camden adult social care precept	2.0%	£222.42
Greater London Authority	8.6%	£471.40
Annual Charge for Period	5.8%	£2010.57



Save trees. Choose paperless billing. View your Council Tax account online. Go to www.camden.gov.uk/register to sign up for e-bills by setting up a Camden Account.

DATA AND PRIVACY: The information we collect and process for administering Council Tax is used to accurately calculate your bill and apply any relevant discounts and exemptions. The information you provide may be shared with other council departments to help you access services more easily, and for reasons as set out in our Privacy Notice. We may share information with external agencies if we are required to by law or in accordance with Data Protection legislation, for the detection and prevention of fraud and crime and other lawful reasons. If you would like more information on how the council processes your personal information, please see our Privacy Notice at www.camden.gov.uk/privacy

Your guide to Council Tax

2024 to
2025

Dear Camden resident,

We are doing all we can to ensure that Camden is a place where everyone has the chance to succeed and no one gets left behind. Since 2010, the government has cut our core funding by 48% in real terms (adjusted for inflation) – equivalent to £831 per resident.

Because the government has cut core funding for over a decade, many councils across the country are struggling to balance their budget. But in Camden, we have a strong track record of managing our finances, investing in prevention, and making every pound count – so we are not in this position.

However, instead of giving us and all local councils enough funding every year, the government expects us to increase council tax to bring in much-needed money. We therefore need to raise council tax by 4.99% to ensure we can continue to provide you with vital services at the current level – such as street cleaning, libraries, youth clubs, and support for vulnerable children and adults.

At a time when more people than ever are coming to us for support, we will continue to lobby the government to invest in local councils and vital public services.

Despite our limited resources, we will continue to help residents facing hard times and protect the services our community relies on:

- Residents want clean streets, so on top of the £25 million we already invest in rubbish and recycling collections, and street cleaning, we will invest a further £1.04 million in street cleaning, including a new jet washer and nighttime cleaning in our busiest areas so residents wake up to cleaner streets.
- Investing in vital frontline services and protecting libraries, community safety, parks and green spaces, youth centres, family hub centres, community centres and support for elderly residents and our Ofsted-rated outstanding children's services.
- For the third year in a row, we're investing £2m in our Cost of Living Crisis Fund for residents who cannot afford the essentials. If you're in this position, I urge you to register for our free Money Advice Service so we can help you access all the support you're eligible for: **camden.gov.uk/MoneyAdviceService**
- Investing in a £2.1m Family Crisis Fund to help ensure no child goes hungry – funding free breakfast clubs, and supermarket vouchers for low-income parents and carers to help with the cost of food during the holidays.
- Supporting our residents into secure housing. In the past year, our Community Investment Programme has finished building 87 new council and genuinely affordable homes. We are also buying properties to provide housing for those facing homelessness. There are now 143 homeless families living in these properties, allowing people to stay in the borough and saving money on expensive hotels.
- Taking action on the climate crisis: planting trees; installing new electric vehicle charging points; and supporting residents struggling with their energy bills, including in the private rented sector, to make their homes more energy efficient.
- Investing £31 million in our Council Tax Support scheme, reducing council tax bills for 22,000 residents. If you earn less than £105.19 per week you won't pay anything – but you need to apply. Find out more at **camden.gov.uk/CTS**

If you are worried about paying your Council Tax, please get in touch with us. Visit **camden.gov.uk/council-tax-support** or call **020 7974 4444** (option 3 then option 2).

Lastly, I know that it continues to be a difficult time for so many Camden residents. If you or anyone you know is struggling, we're here for you – please contact us. Find out more about available support on the other page.



Many thanks,

Councillor Georgia Gould, Leader of Camden Council



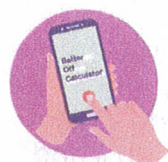
Struggling with **debt** or **money worries**?

We're here for you



Sign up for our free Money Advice Service for tailored advice and support

camden.gov.uk/MoneyAdviceService



Check you're receiving all the benefits you're entitled to, and get budgeting tips, using our Better Off Calculator

camden.gov.uk/BetterOff



Check if you're eligible for our Cost of Living Crisis Fund and/or the government-funded Household Support Fund. Anyone who is eligible can apply – including private renters. The deadline to apply for the Household Support Fund is 31 March 2024. There is no deadline for the Cost of Living Crisis Fund.

camden.gov.uk/COLCFund



camden.gov.uk/HSF



Check if you're eligible for Council Tax Support and apply

camden.gov.uk/CTS



Help with **energy bills** and **staying warm this winter**



If you're a Camden Council tenant

Get advice or organise a 'warm and well' home visit with Camden's Home Energy Advice Team ☎ **020 7974 4444 (option 9)**
✉ EnergyEfficiencyHomeAdvice@camden.gov.uk

If you're a private renter, homeowner, council or housing association tenant

Get help and advice from Energy Advice London ☎ **0808 196 8260**
✉ energyadvice.london
Call Camden Council
☎ **020 7974 4444 (option 9)**

'Warm welcome' spaces are open in libraries, children's centres and other community buildings across Camden where you can:

- **Join in with free and low-cost activities** including story time sessions, swimming, cooking and pottery
- **Relax** with a hot drink or a hot meal
- **Meet new people** or enjoy some **peace and quiet**
- Find out how to **access support** if you need it



Find your nearest 'warm welcome' space and what's on offer
✉ camden.gov.uk/WarmWelcome or scan the QR code

camden.gov.uk/CostOfLiving

☎ **020 7974 4444 (option 9)**

 **Camden**