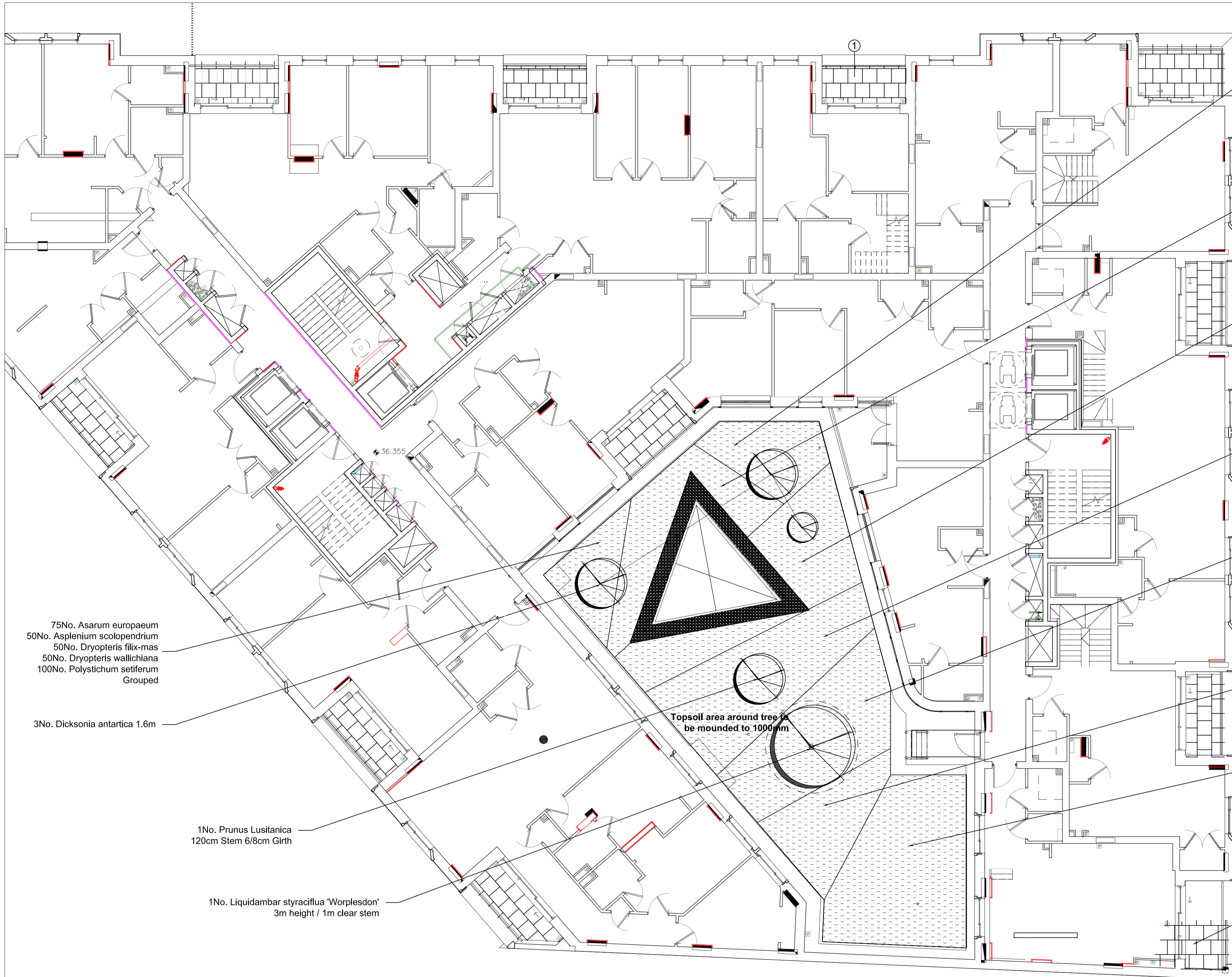
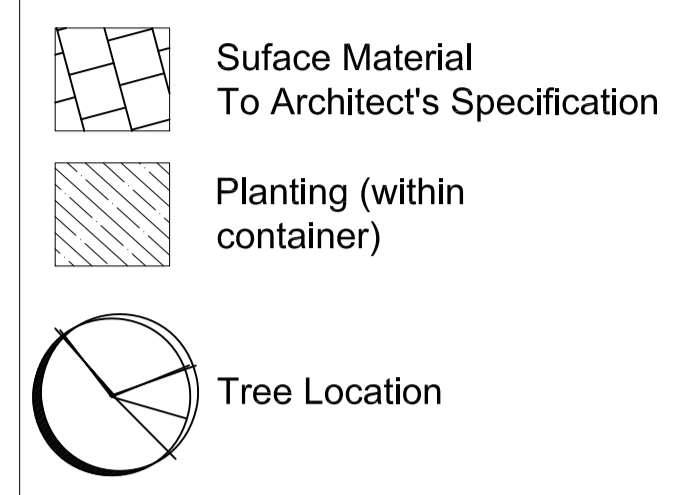


Do not scale off drawings. All dimensions to be checked on site.



- 75No. Asarum europaeum  
50No. Asplenium scolopendrium  
50No. Dryopteris filix-mas  
50No. Dryopteris wallichiana  
100No. Polystichum setiferum  
Grouped
- 100No. Carex morrowii 'Ice Dance'  
75No. Erythronium californicum 'White Beauty'  
125No. Geranium macrorrhizum 'Spessart'  
10No. Hedera helix 'Hibernica'  
75No. Helleborus x hybridus  
75No. Liriope muscari  
75No. Luzula sylvatica  
150No. Millium effusum 'Aureum'  
100No. Stipa tenuifolia  
125No. Vinca minor alba  
Grouped
- 125No. Asarum europaeum  
100No. Asplenium scolopendrium  
100No. Dryopteris filix-mas  
100No. Dryopteris wallichiana  
200No. Polystichum setiferum  
Grouped
- 100No. Carex morrowii 'Ice Dance'  
75No. Erythronium californicum 'White Beauty'  
125No. Geranium macrorrhizum 'Spessart'  
10No. Hedera helix 'Hibernica'  
75No. Helleborus x hybridus  
75No. Liriope muscari  
75No. Luzula sylvatica  
150No. Millium effusum 'Aureum'  
100No. Stipa tenuifolia  
125No. Vinca minor alba  
Grouped
- 125No. Carex testacea  
125No. Cortaderia selloana 'Aureolineata'  
125No. Deschampsia cespitosa 'Bronzeschleier'  
125No. Stipa tenuifolia  
Banded
- 75No. Carex morrowii 'Ice Dance'  
50No. Erythronium californicum 'White Beauty'  
100No. Geranium macrorrhizum 'Spessart'  
5No. Hedera helix 'Hibernica'  
50No. Helleborus x hybridus  
50No. Liriope muscari  
50No. Luzula sylvatica  
100No. Millium effusum 'Aureum'  
75No. Stipa tenuifolia  
100No. Vinca minor alba  
Grouped
- 150No. Carex testacea  
150No. Cortaderia selloana 'Aureolineata'  
150No. Deschampsia cespitosa 'Bronzeschleier'  
150No. Stipa tenuifolia  
Banded

**KEY**



**NOTES**

1. 500mm depth imported topsoil mix, using class 5B/2 multi-purpose loam/sandy loam topsoil. Ameliorants, water polymer gel and slow release fertiliser mixed in.
2. Drip-fed subsurface irrigation incorporating soil moisture sensors.
3. Feature Tree - 2.5m diameter tree pit for, backfilled with 'Amsterdam Tree Sand' by Heicom, or imilar. 1m maximum depth (5m<sup>3</sup>), laid in 250- 300mm layers before being compacted with a whacker plate. Ameliorants, water polymer gel and slow release fertiliser mixed in. 200mm depth of landscape general purpose subsoil to base of pit.

**BIRDS**

- 4No. 1B Schwegler Nest Boxes (32mm, small holed)
- 4No. 2H Schwegler Robin Boxes (open fronted)
- One of each box will be placed on individual trees or within suitable scrub, pole mounted boxes maybe used until the trees and scrub on site mature, these boxes can then be relocated.
- Boxes to be placed predominantly on the western section of the development or around the perimeter where they are less likely to be disturbed.
- Boxes should be positioned outside of the bird nesting period between March and October and placed at varying heights and aspects to minimise potential tampering or vandalism.
- Boxes should be monitored on an annual basis to assess for any damage, maintenance issues. Any maintenance required should be carried out promptly outside of the bird nesting period.

**BATS**

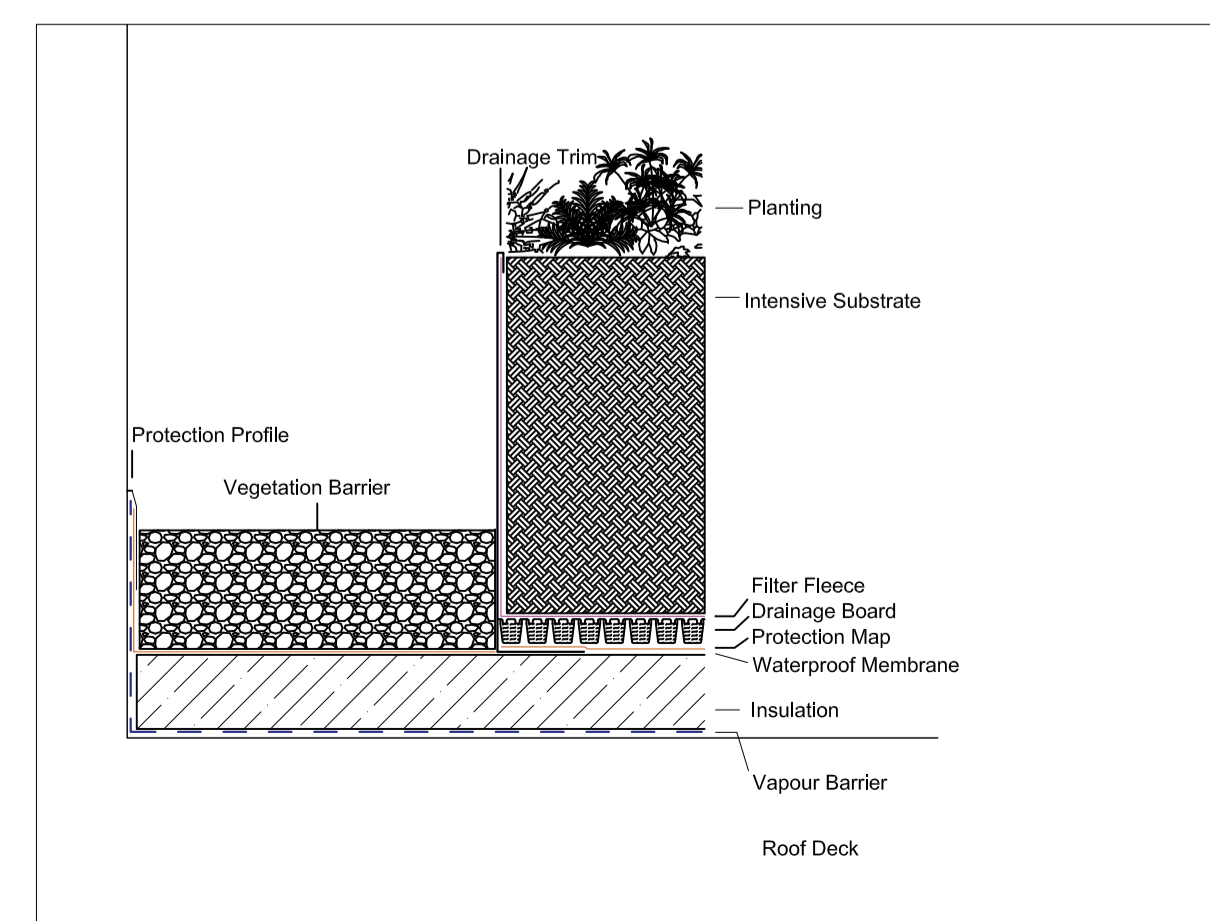
- 3No. Schwegler 2F Boxes
- 3No. Schwegler 2FD Boxes
- 3No. Schwegler 2FN Boxes
- One of each type will be placed on three features ideally on the larger more mature trees. To be placed between 3 and 5m up away from the main site lighting and nearer linear routes and vegetation. The boxes should be installed between September and October (unlikely hibernating period) when bats are still active to minimise disturbance.
- If the trees on site are unsuitable for the boxes pole mounted boxes may be required or boxes attached to suitable structures adjoining potential habitat. The boxes can then be moved under good practice once trees are established and of adequate size.

**PLANTER SCHEDULE**

Planter Ref.	Material	Colour [RAL]	Size (mm)	Notes	Quantity
A	Powder Coated Steel Planter	7024	1900 (L) x 500 (W) x 600 (H)	Lower GF	8
C	Powder Coated Steel Planter	7024	1875 (L) x 835 (W) x 600 (H)	Upper GF	2
D	Powder Coated Steel Planter	7024	10400 (L) x 800 (W) x 600 (H)	Upper GF	1
E	Powder Coated Steel Planter	7024	See Drawing	Upper GF / Shape as per drawing	1
F	Powder Coated Steel Planter	7024	Total Length - 20662	Level 2 / 4 Angles	1
G	Powder Coated Steel Planter	7024	Total Length - 9709.3	Level 4 / 2 Angles	1
H	Powder Coated Steel Planter	7024	Total Length - 6666.3	Level 4 / 2 Angles	1
I	Powder Coated Steel Planter	7024	8850 (L) x 700 (W) x 600 (H)	Level 5	1
J	Powder Coated Steel Planter	7024	7650 (L) x 710 (W) x 600 (H)	Level 5	2
K	Powder Coated Steel Planter	7024	7445 (L) x 700 (W) x 600 (H)	Level 5	1
L	Powder Coated Steel Planter	7024	3750 (L) x 3665 x 500 (W) x 515.21 x 600 (H)	Level 5	1
M	Powder Coated Steel Planter	7024	4110 (L) x 4020 x 500 (W) x 516.6 x 600 (H)	Level 5	1
N	Powder Coated Steel Planter	7024	3100 (L) x 3300 x 500 (W) x 519.7 x 600 (H)	Level 5	1
O	Powder Coated Steel Planter	7024	Total Length - 29614 mm x 600 (H)	Level 6 / 4 Angles	1
P	Powder Coated Steel Planter	7024	1500 (L) x 700 (W) x 600(H)	Level 6	1
Q	Powder Coated Steel Planter	7024	Total Length - 12 755mm x 600 (H)	Level 6	1

**INTENSIVE GREEN ROOF AREA 175m2**

**SUGGESTED INTENSIVE GREEN ROOF DETAIL (NTS)**



**GENERAL LANDSCAPING SPECIFICATION NOTES:-**

Any existing trees to be retained and protected throughout construction period in accordance with BS 5837:2012 - Trees in Relation to Design, Demolition and Construction.

**SPECIFICATION:-**

**MATERIALS AND WORKMANSHIP**

- Materials and workmanship shall generally be in accordance with the following documents - BS3936 Nursery Stock and BS4428. Recommendations for General Landscape Operations.
- Plant material to be the sizes and dimensions as stated in the schedule and shall be healthy with good fibrous root systems.

**TREES**

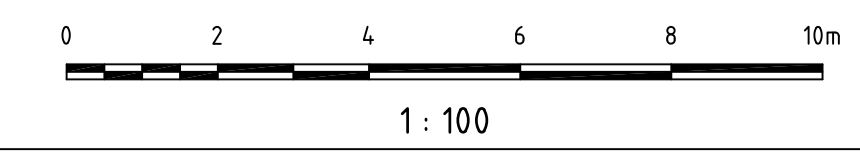
- All trees to be back filled with top soil and suitable organic material (to be specified).
- All trees should be staked or double staked using pointed softwood / peeled chestnut / larch or oak stakes, free from projections and large or edge knots and tied above ground.

**SHRUBS/TREES - GENERAL**

- Condition: Materially undamaged, sturdy, healthy and vigorous.
- Appearance: Of good shape and without elongated shoots.
- Hardiness: Grown in a suitable environment and hardened off.
- Health: Free from pests, diseases, discolouration, weeds and physiological disorders.
- Budded or grafted plants: Bottom worked.
- Root System and Condition: Balanced with branch system.
- Standard: The relevant parts of BS 3936.
- Species: True to Name.
- Origin/Provenance: British provenance as per the National Plant Specification.
- Names, Forms, Dimensions, Provenance and other Criteria: To BS 3936-1 Trees and Shrubs.
- All shrubs and trees to receive a 50mm layer of bark mulch.

**WATERING**

- All trees/shrubs will be watered after planting and to be watered as necessary to ensure survival.
- Any trees, shrubs, seeding works which fail within the first 5 years to be replaced inline with the species, seeding mixes and sizes as detailed on this plan.



www.rbmp.co.uk  
studio@rbmp.co.uk / 0161 706 0158

**PROJECT**  
Haverstock Hill  
Camden

**CLIENT**  
OD Camden Hotel Ltd

**TITLE**  
Landscape Plan  
1st Floor Plan

SCALE 1:100 DATE 30.03.23  
DRAWN AM CHECKED RB

HHCAM-RBMP-00-01-DR-L-01

JOB NO:	DWG NO:	REV NO:	ORIGINAL SIZE
2227	000	A	A1