

Fig 26 Plans and Section of Demolition and Proposed Courtyard Store (Hopkins Architects, dwg HGC-HAL-UB-ZZ-DR-A-1000 and 1010, rev P01, 22-10-2024)

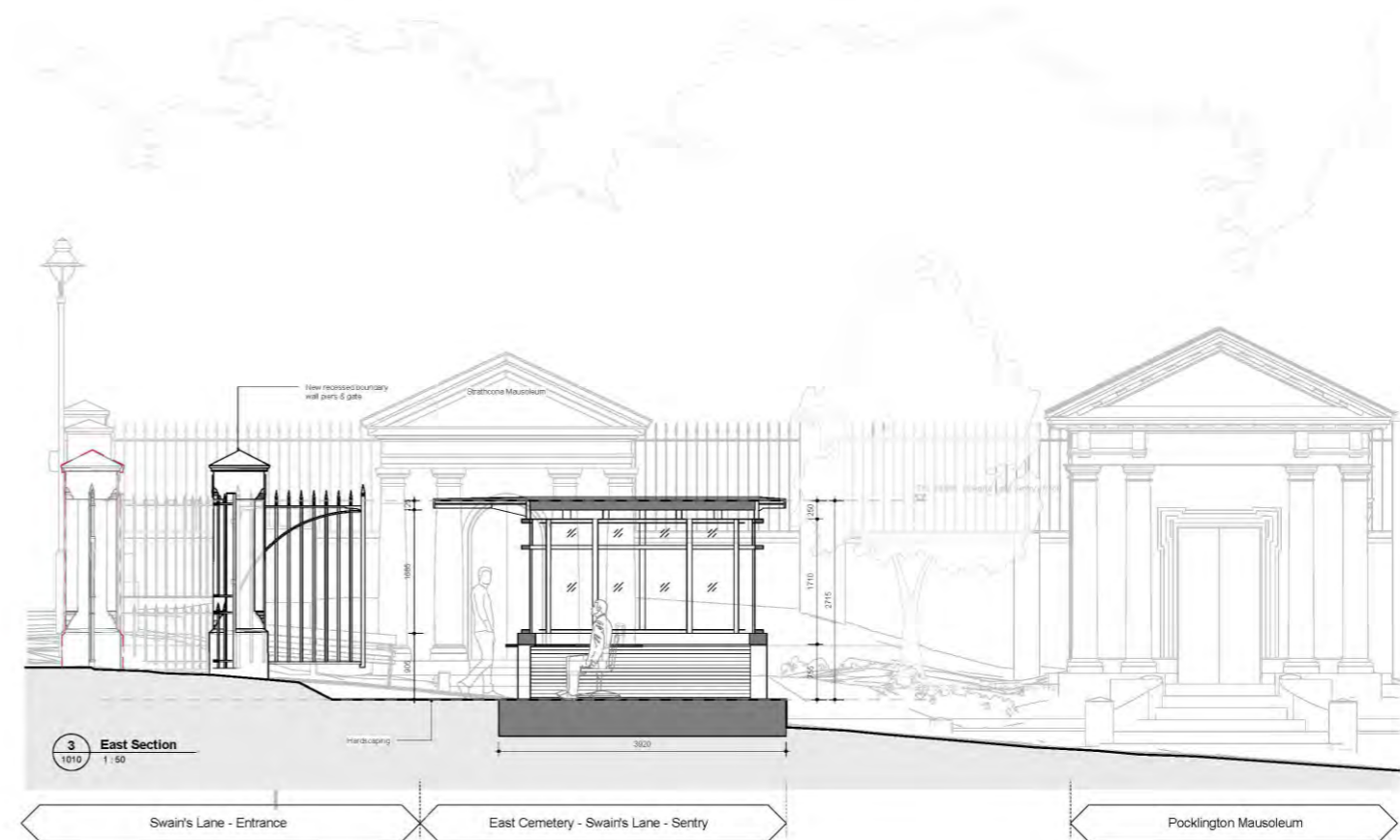
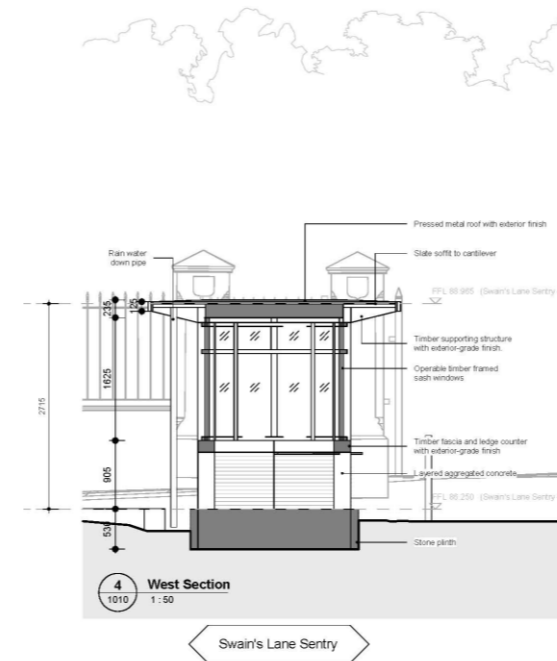
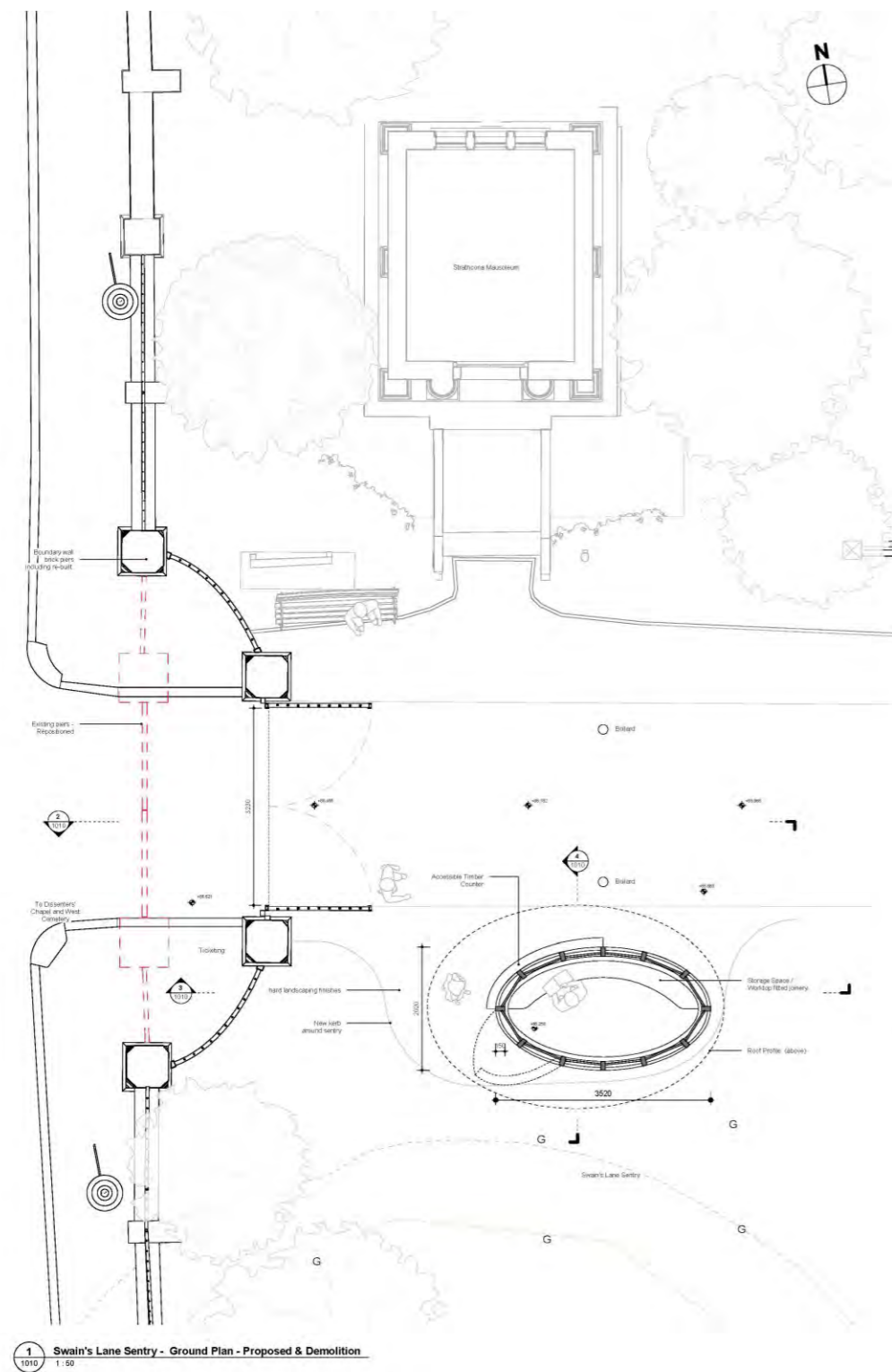


Fig 27 Northern kiosk (Hopkins Architects, dwg HGC-HAL-ES-ZZ-DR-A- 1010, rev P01, 22-10-2024)

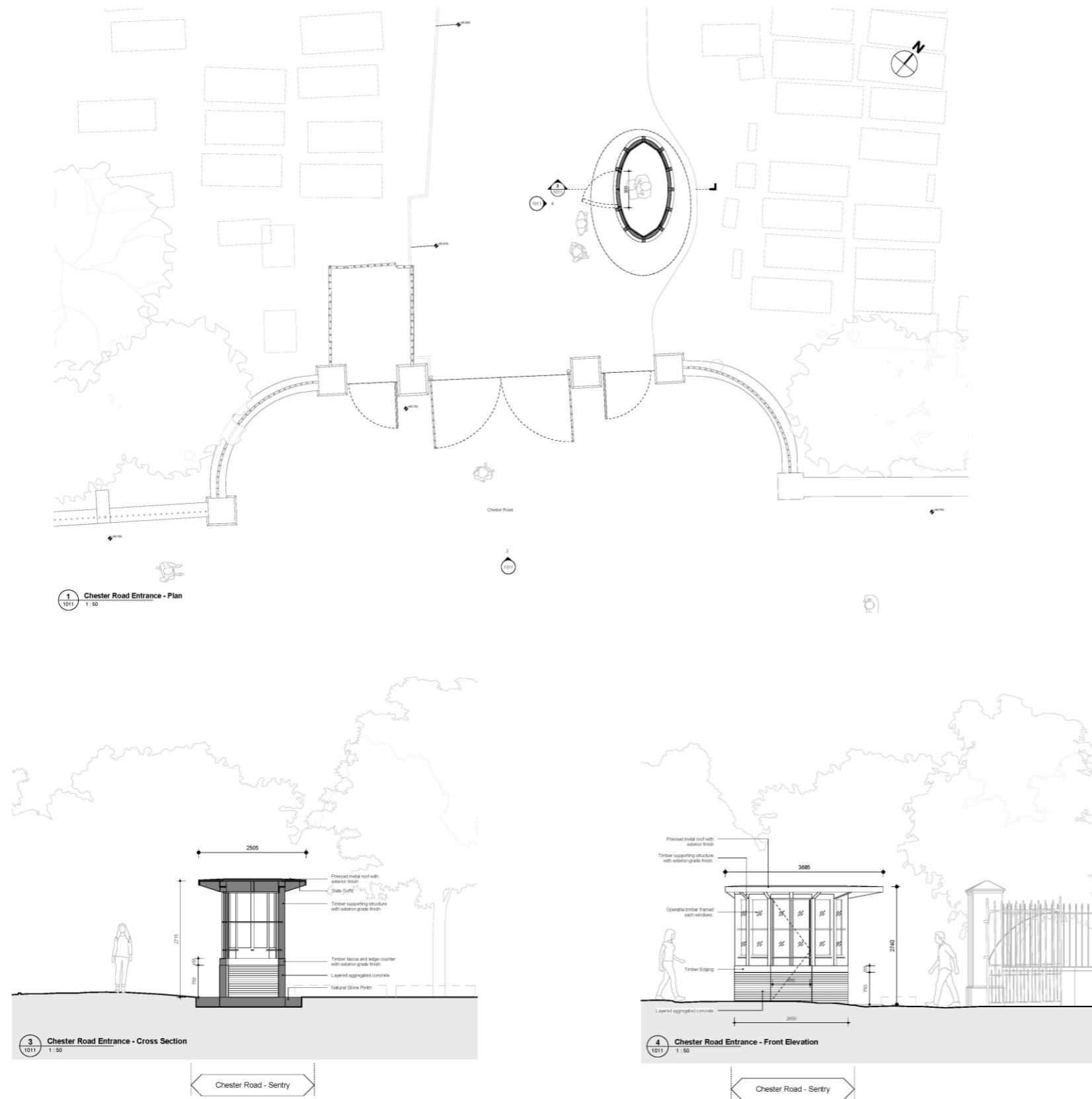


Fig 28 Southern kiosk (Hopkins Architects, dwg HGC-HAL-ES-ZZ-DR-A- 1011, rev P01, 22-10-2024)



Fig 29 Site of proposed East Side Mound Building, looking north-west (MOLA photo 06, 22-06-2023)



Fig 30 Site of proposed East Side Mound Building, looking south-east (MOLA photo 05, 22-06-2023)

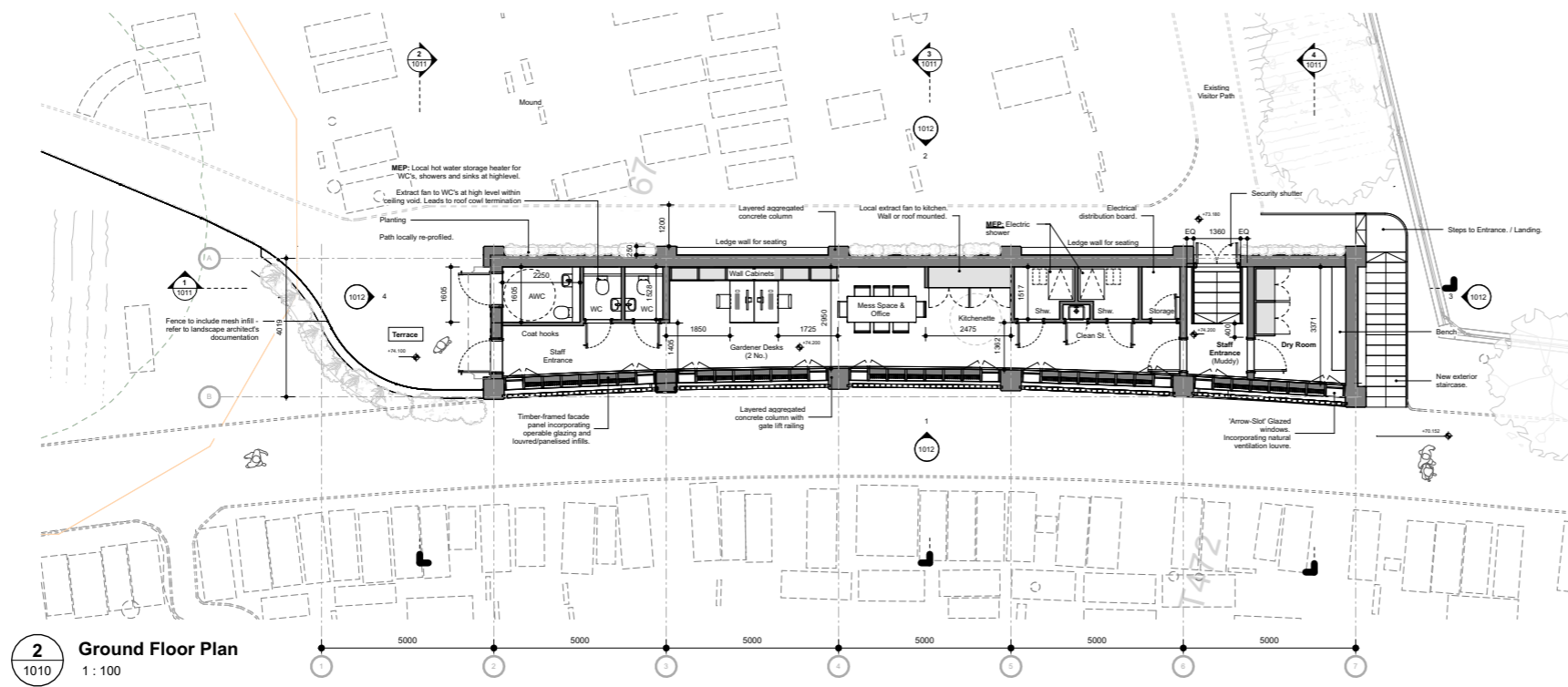
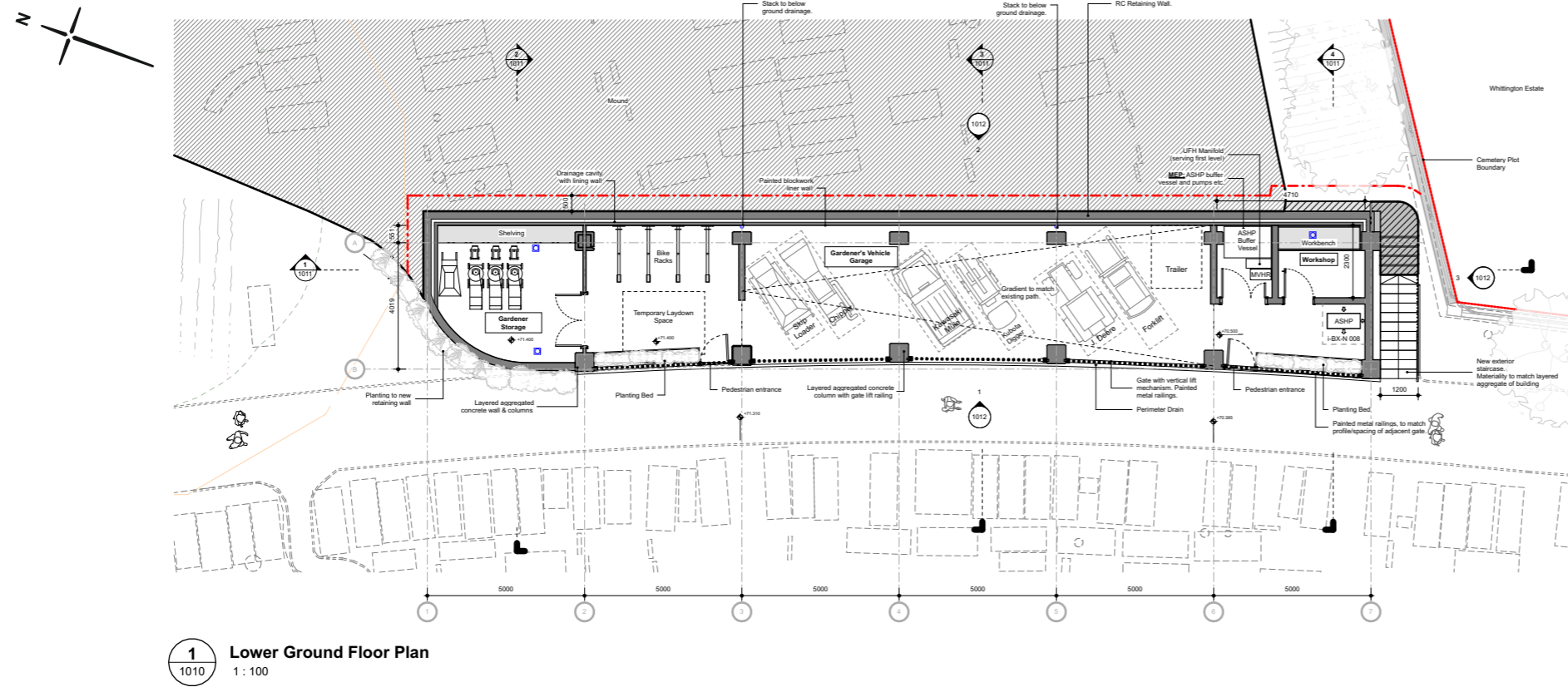


Fig 31 East Side Mound Building Proposed Plans (Hopkins Architects, dwg HGC-HAL-GB-ZZ-DR-A-1010, rev P01, 22-10-2024)

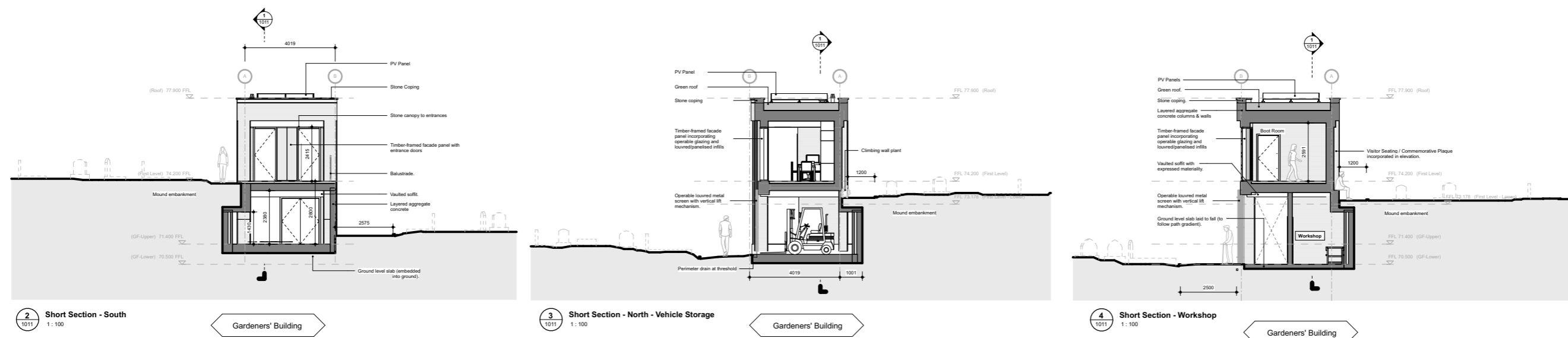
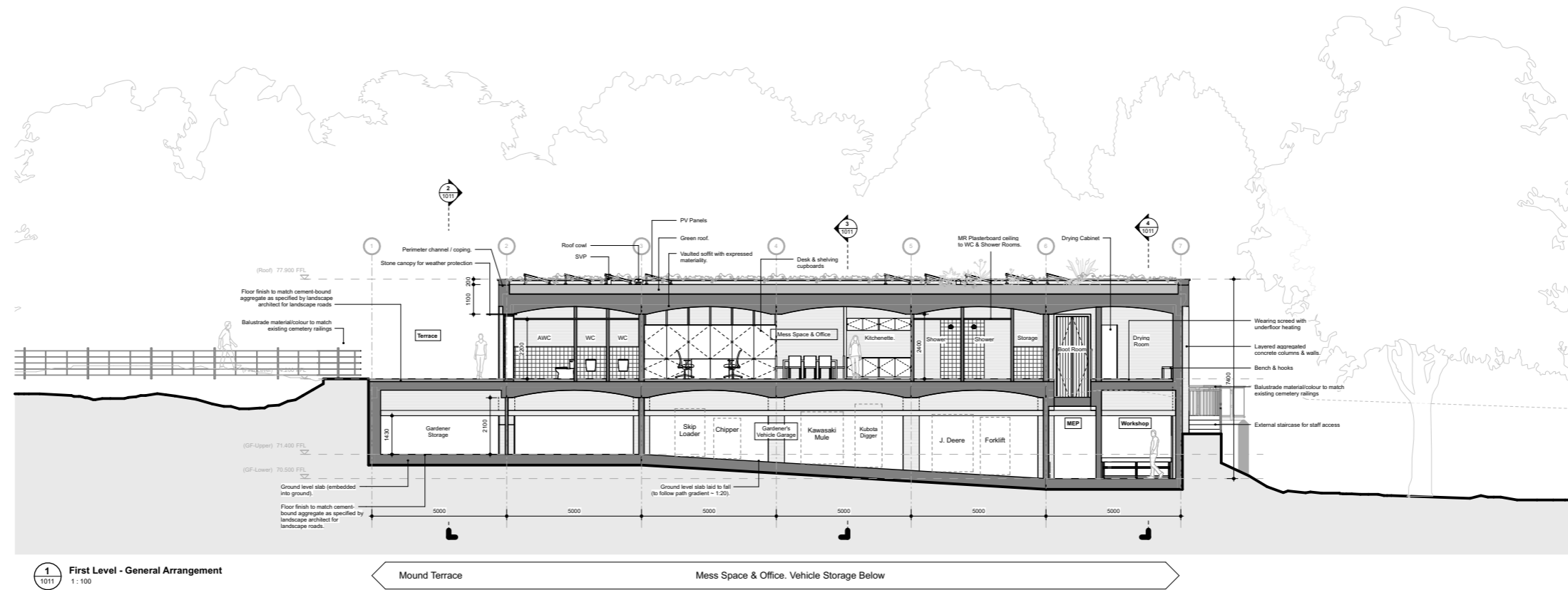


Fig 32 East Side Mound Building Proposed Sections (Hopkins Architects, dwg HGC-HAL-GB-ZZ-DR-A-1011, rev P01, 22-10-2024)



Fig 33 Example of current conditions of ladder paths in the East side (MOLA photo 43, 29-06-2023)



Fig 34 Example of current conditions of ladder paths in the East side (MOLA photo 44, 29-06-2023)



Fig 35 Example of current conditions of ladder paths in the East side (MOLA photo 45, 29-06-2023)



- New path soakaway
- New shallow gravel sub-base/
soakaway without
impacting tree roots
- Clay pipe drain within sub base
of new path build up with linear
channel drains; existing piped
drainage to be retained where
possible
- Gravel sub-base to attenuate
water and direct water to
piped drainage.
- Attenuation tank
- Pumped soakaway to infiltrate
water collected from
lower east side

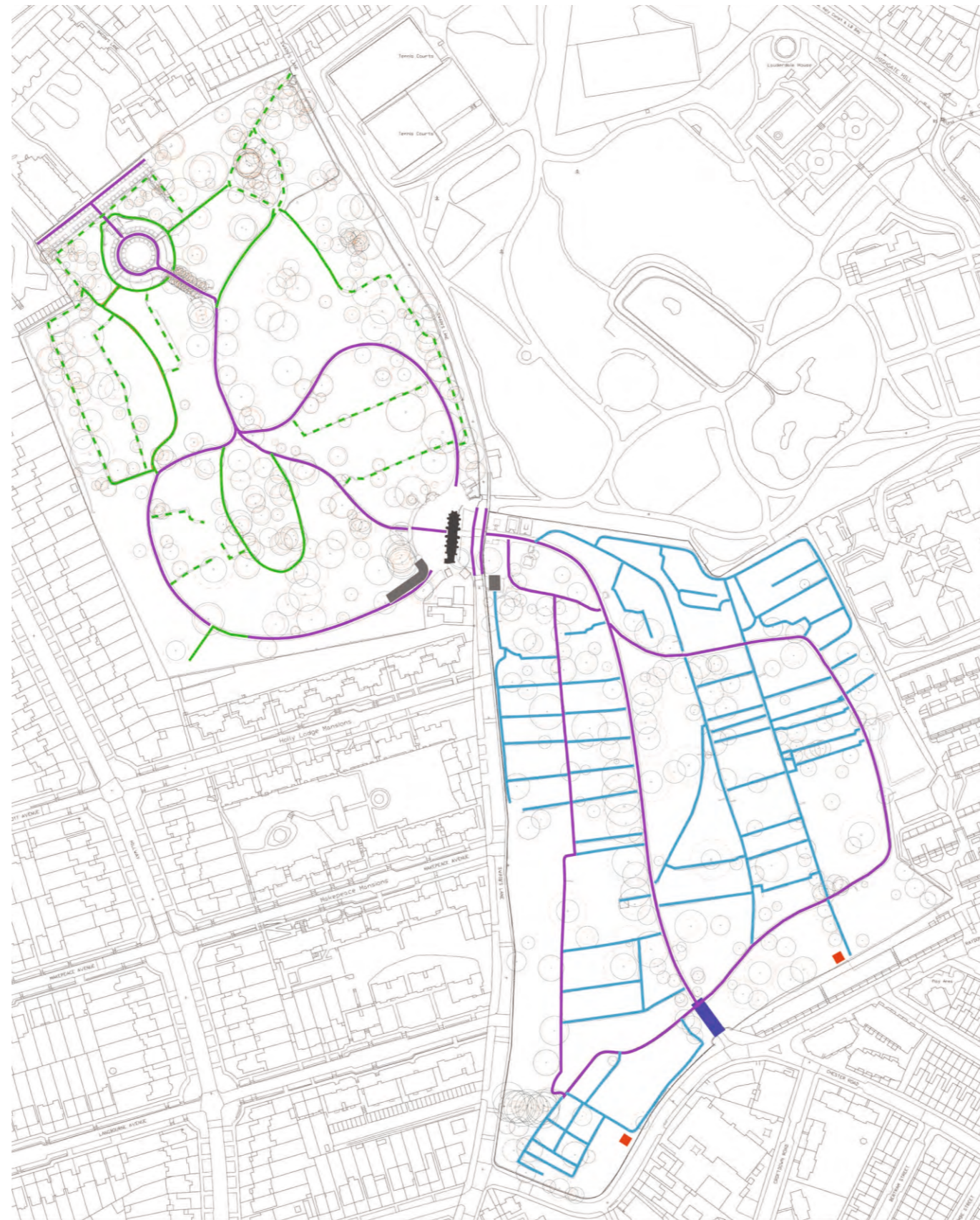


Fig 36 Drainage Strategy (Gustafson Porter + Bowman 2024, Landscape Design and Access Statement, Page 15)

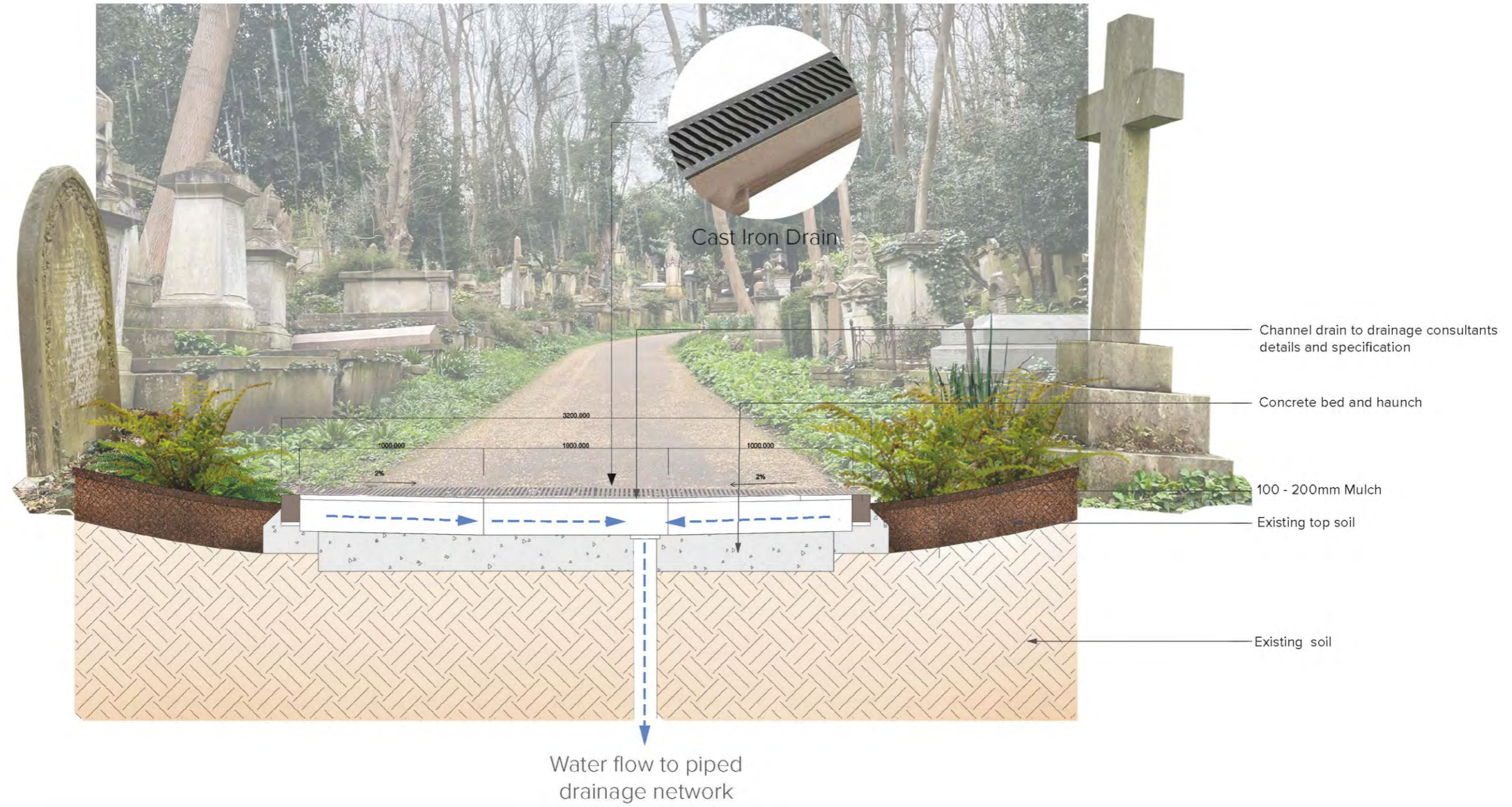


Fig 37 Primary paths preferred solution (Gustafson Porter + Bowman, 2024, Landscape Design and Access Statement, Page 16)

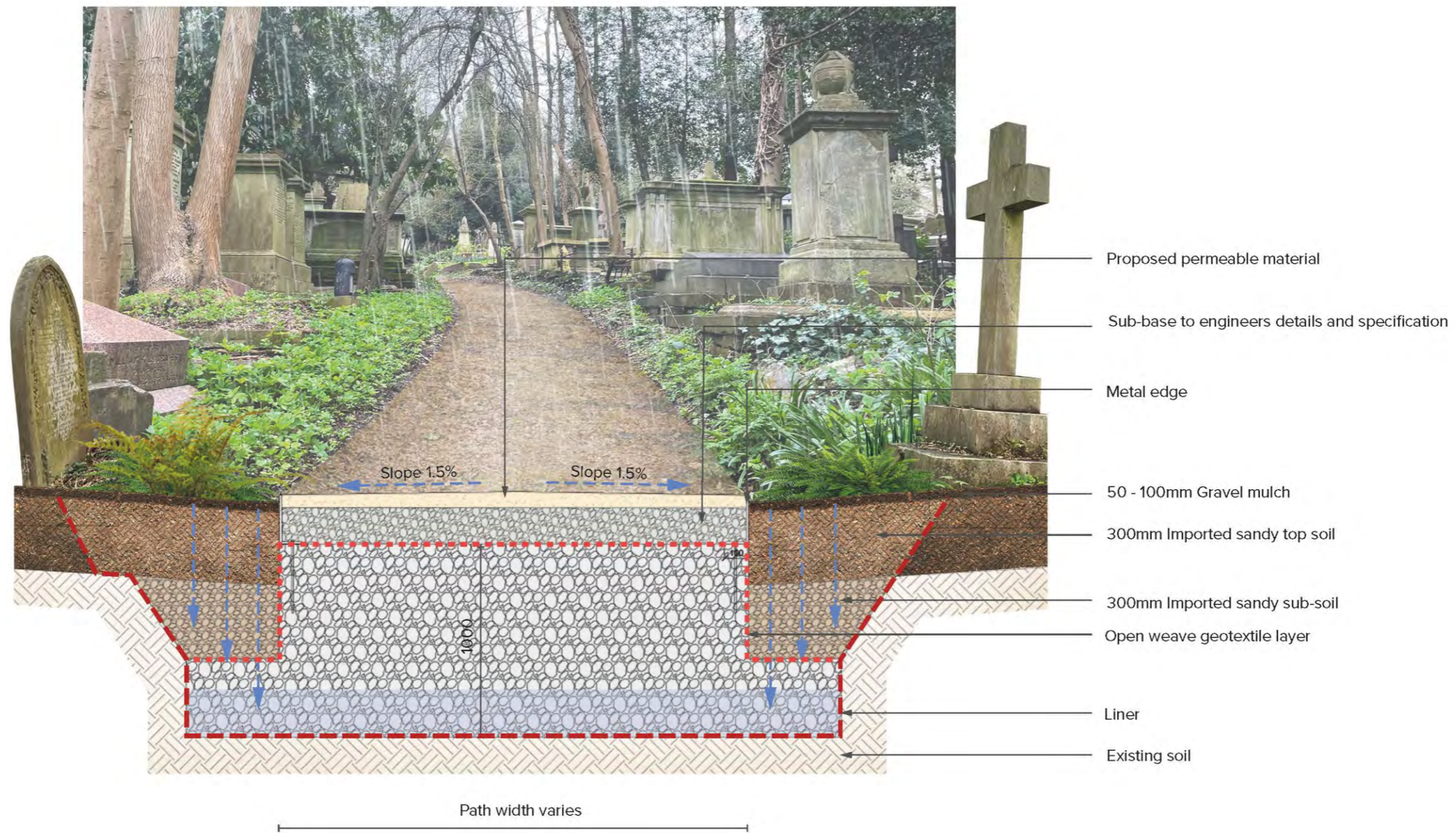


Fig 38 Secondary paths proposed strategy – (Gustafson Porter + Bowman, 2024, Landscape Design and Access Statement, Page 17)



Fig 39 Tertiary paths proposed strategy – (Gustafson Porter + Bowman, 2024 Landscape Design and Access Statement, Page 18)

5.7 Tree Planting

PROPOSED TREES

Native

-  *Acer campestre*
(Field Maple)
-  *Alnus glutinosa*
(Black alder)
-  *Carpinus betulus*
(European hornbeam)
-  *Corylus avellana*
(Hazel)
-  *Crataegus monogyna*
(Hawthorn)
-  *Euonymus europaeus*
(European spindle)
-  *Malus sylvestris*
(European Crab Apple)
-  *Pinus sylvestris*
(Scots pine)



-  *Prunus avium*
(Wild Cherry)
-  *Q. robur*
(Pendunculate Oak)
-  *Quercus patraea*
(Sessile oak)
-  *Sorbus aria*
(whitebeam)
-  *Sorbus torminalis*
(Wild Service Tree)
-  *Taxus baccata*
(English Yew)
-  *Tilia cordata*
(Small-leaved lime)
-  Native Hedgrows
Crataegus monogyna
Prunus spinosa

Non-native

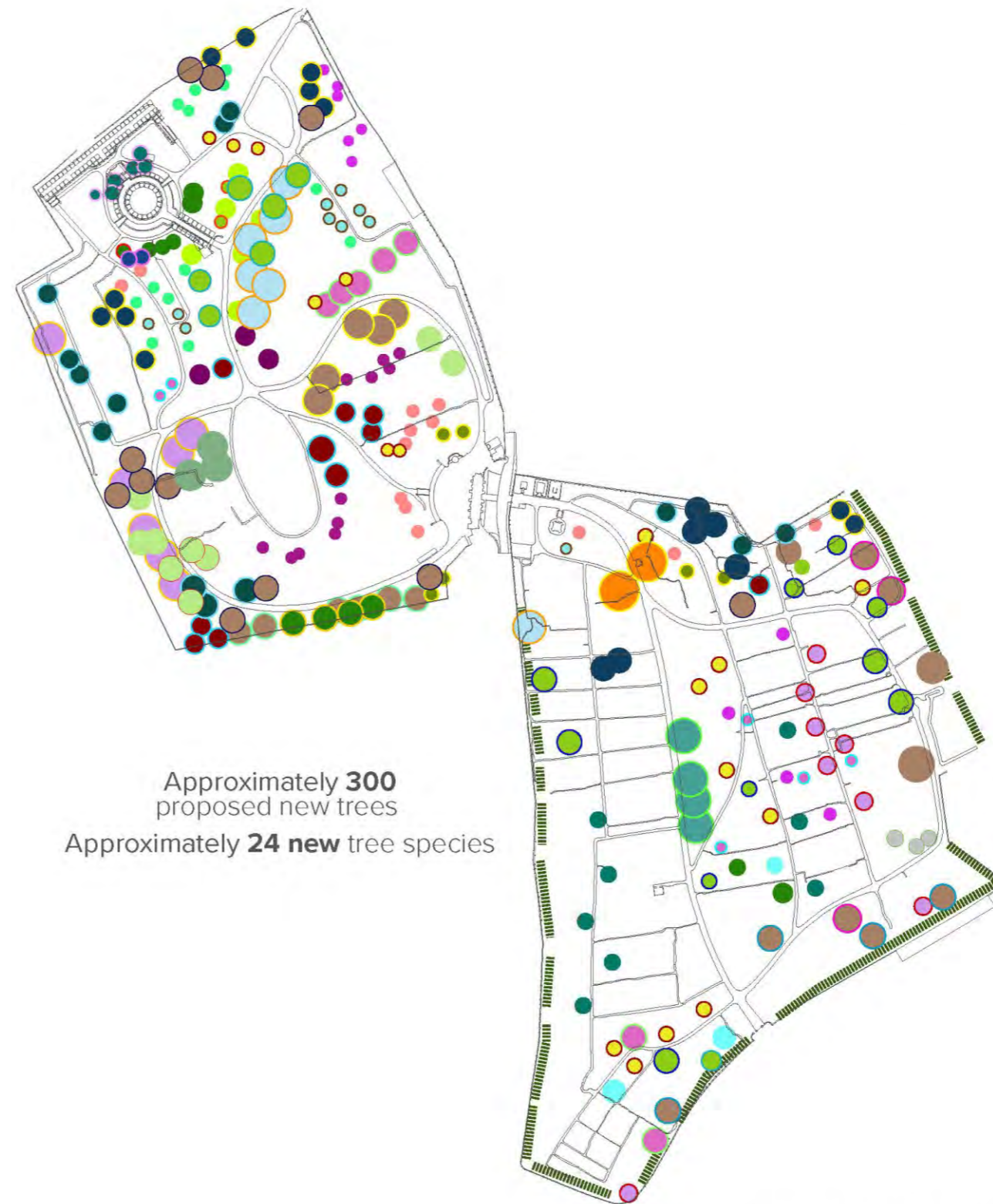
-  *Acer opalus*
(Italian maple)
-  *Acer tataricum*
(Tatar maple)
-  *Acer monspessulanum*
(Montpellier maple)
-  *Amelanchier x lamarkii*
(Snowy mespilus)
-  *Alnus cordata*
(Italian alder)
-  *Betula utilis* Jacquemontii
(Himalayan birch)
-  *Carpinus betulus* 'pendula'
(Hornbeam 'Pendula')
-  *Celtis australis*
(European nettle tree)
-  *Fagus orientalis*
(Oriental beech)
-  *Fraxinus americana*
(White ash)
-  *Ginkgo biloba*
(ginkgo)
-  *Liquidambar orientalis*
(Oriental sweet gum)

-  *Malus sylvestris* 'Louisa'
(Crab apple 'Louisa')
-  *Nyssa sylvatica*
(Black tupelo)
-  *Ostrya carpinifolia*
(Hop hornbeam)
-  *Pinus nigra*
(Austrian pine)
-  *Platanus orientalis*
(Oriental plane)
-  *Pyrus salicifolia*
(willow-leaved pear)
-  *Quercus bicolor*
(Swamp white oak)
-  *Quercus canariensis*
(Algerian oak)
-  *Q. frainetto*
(Hungarian Oak)
-  *Tilia tomentosa*
(Silver Lime)
-  *Ulmus 'New Horizon'*
(Elm 'New Horizon')

Naturalised

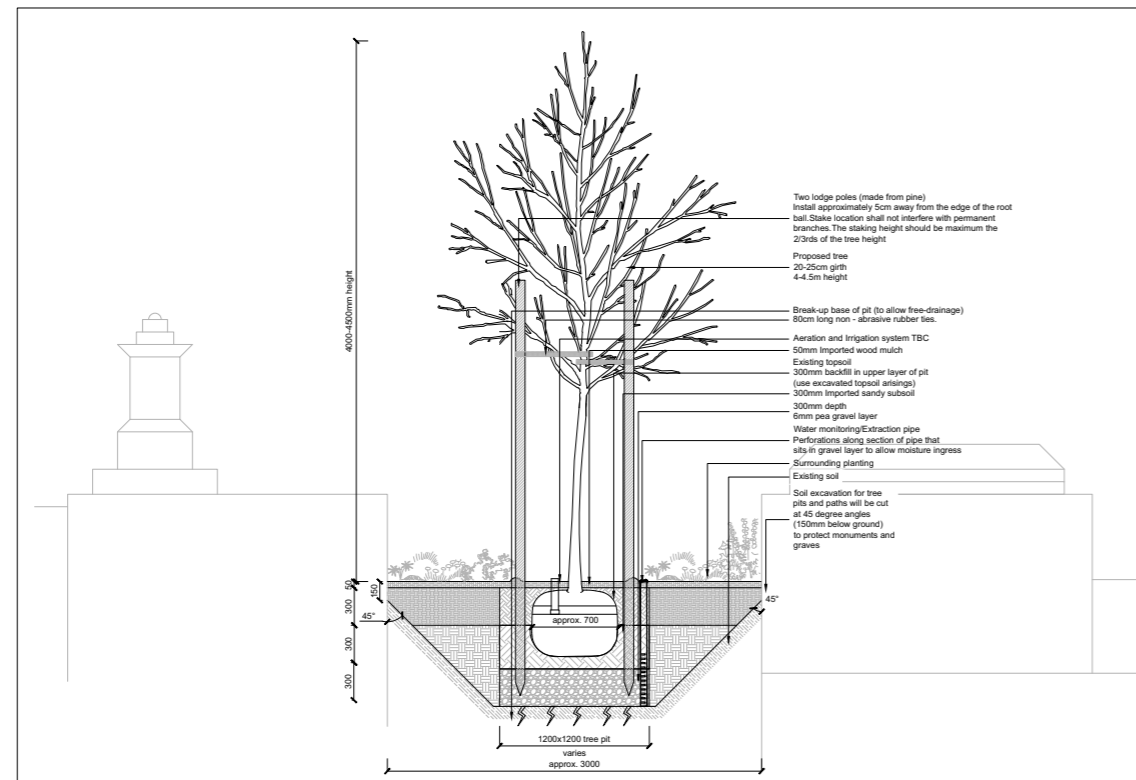
-  *Arbutus unedo*
(Strawberry tree)
-  *Cornus mas*
(Cornelian cherry)

-  *Quercus cerris*
(Turkey Oak)
-  *Quercus ilex*
(Holm oak)

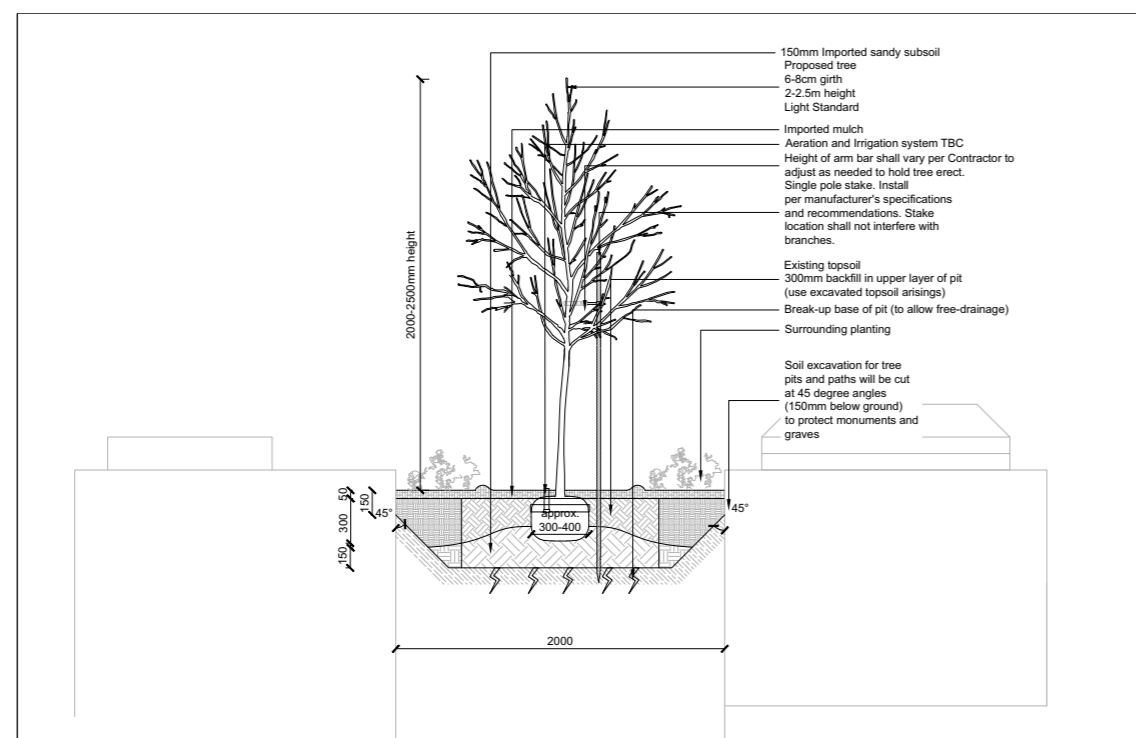


Approximately 300
proposed new trees
Approximately 24 new tree species

Fig 40 Proposed Tree Planting (Gustafson Porter + Bowman, 2024 Landscape Design and Access Statement, Page 46)



01
D01 Typical tree pit detail - Type 01
1/20



01
D02 Typical tree pit detail - Type 02 - Option1 (remove two graves)
1/20

Fig 41 Planting Details – Proposed Tree Pit Sizes (Gustafson Porter + Bowman, dwg HIG-GPB-ZZ-ZZ-L-DR-4500 and 4502, rev R2, 11-10-2024)