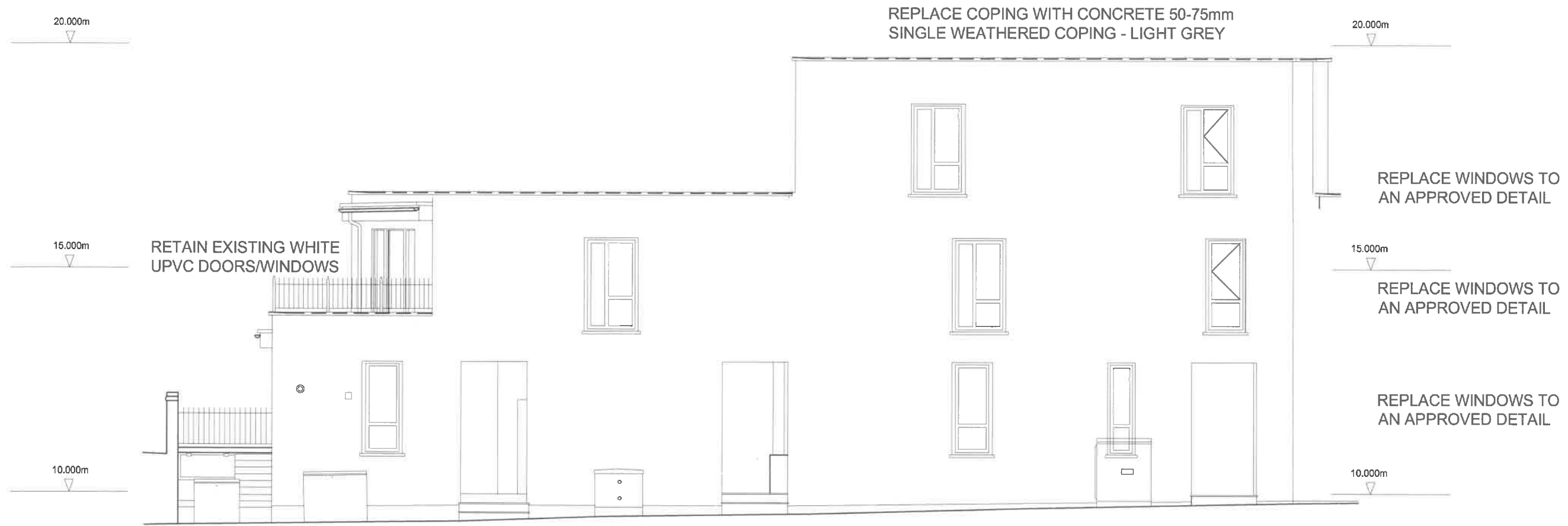


REPLACEMENT WINDOWS TO BE WHITE ALUMINIUM FRAMED CONTEMPORARY STYLE FINAL DETAILS TO BE APPROVED BY THE LONDON BOROUGH OF CAMDEN



PRINCE OF WALES ROAD ELEVATION

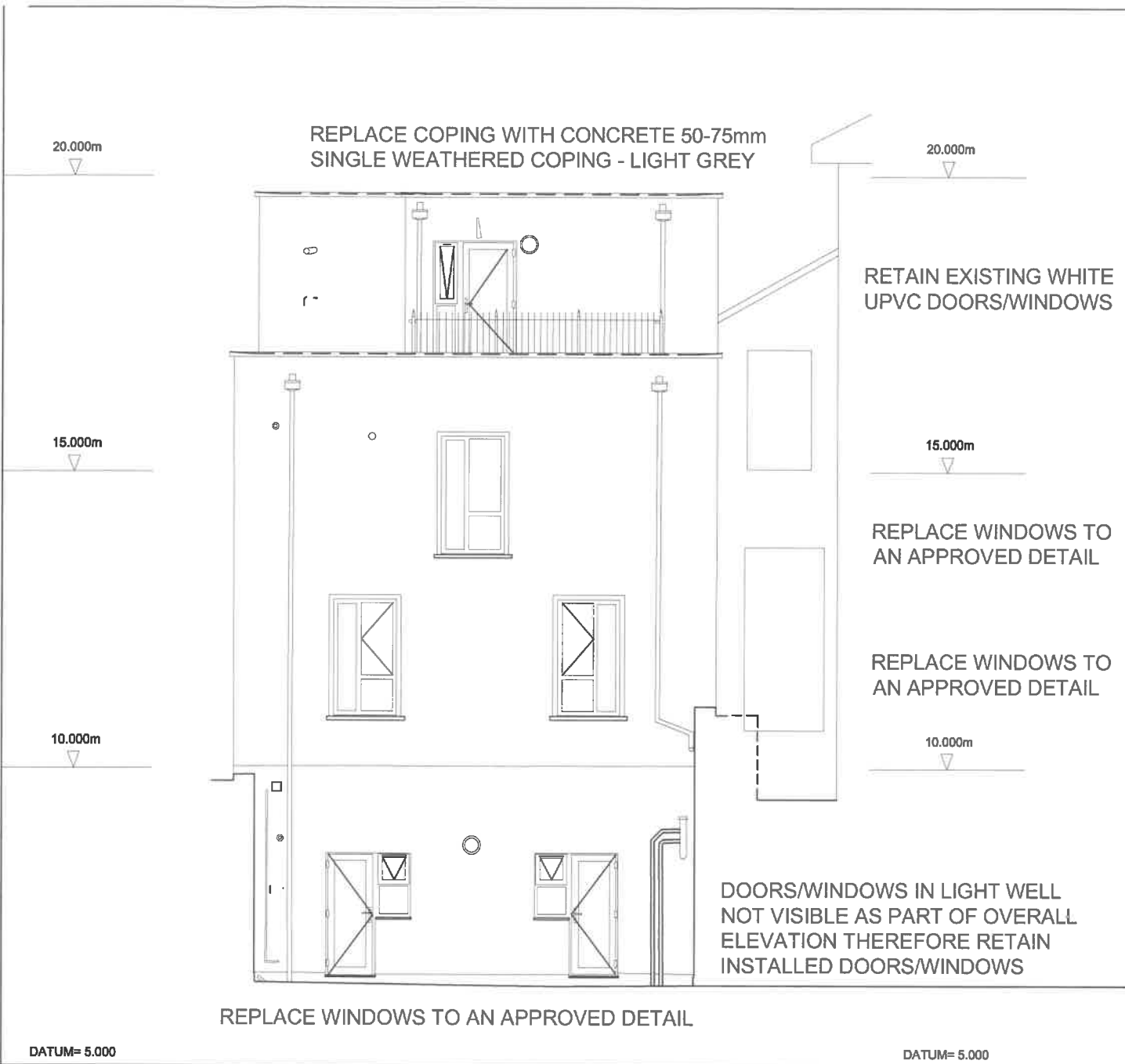
DATUM= 5.000

DATUM= 5.000

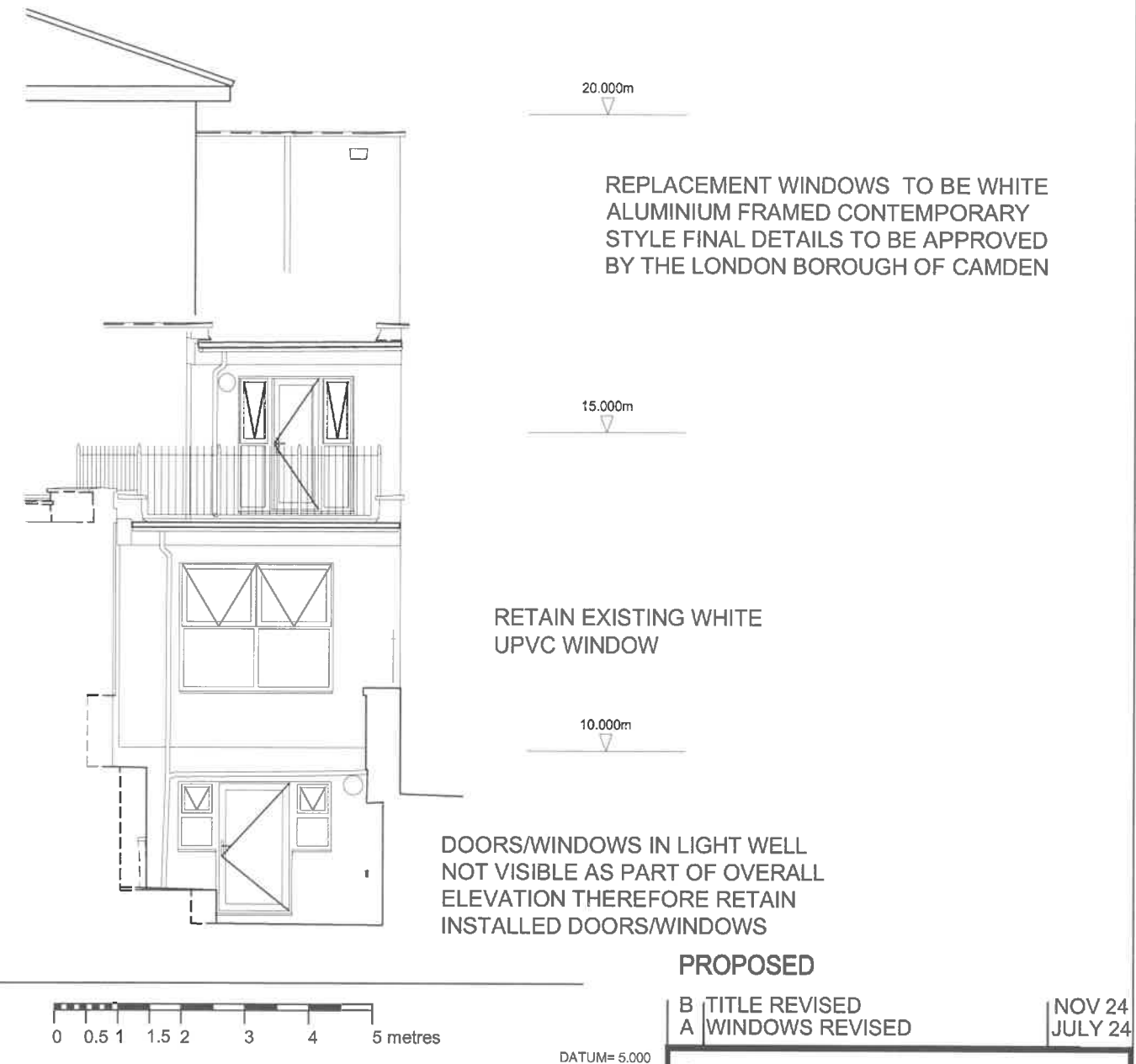
PROPOSED

B TITLE REVISED NOV 24
 A WINDOWS REVISED JULY 24

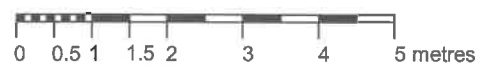
Suffix	Revision	Date
KLF STRUCTURAL DESIGN LIMITED Consulting Engineers SBC House Wallington SM6 7AH 020 8619 0359 KLF_Structural_Design@yahoo.com ©		
Job 201 TO 203 PRINCE OF WALES ROAD (FORMERLY 62A HAVERSTOCK HILL) LONDON NW3		
Title PRINCE OF WALES ROAD ELEVATION		
Drawn TM	Date JUN 24	Checked Date Scale 1:100 @ A3
Sheet Size A3		Sheet No. 21064/E01
Revision		A B



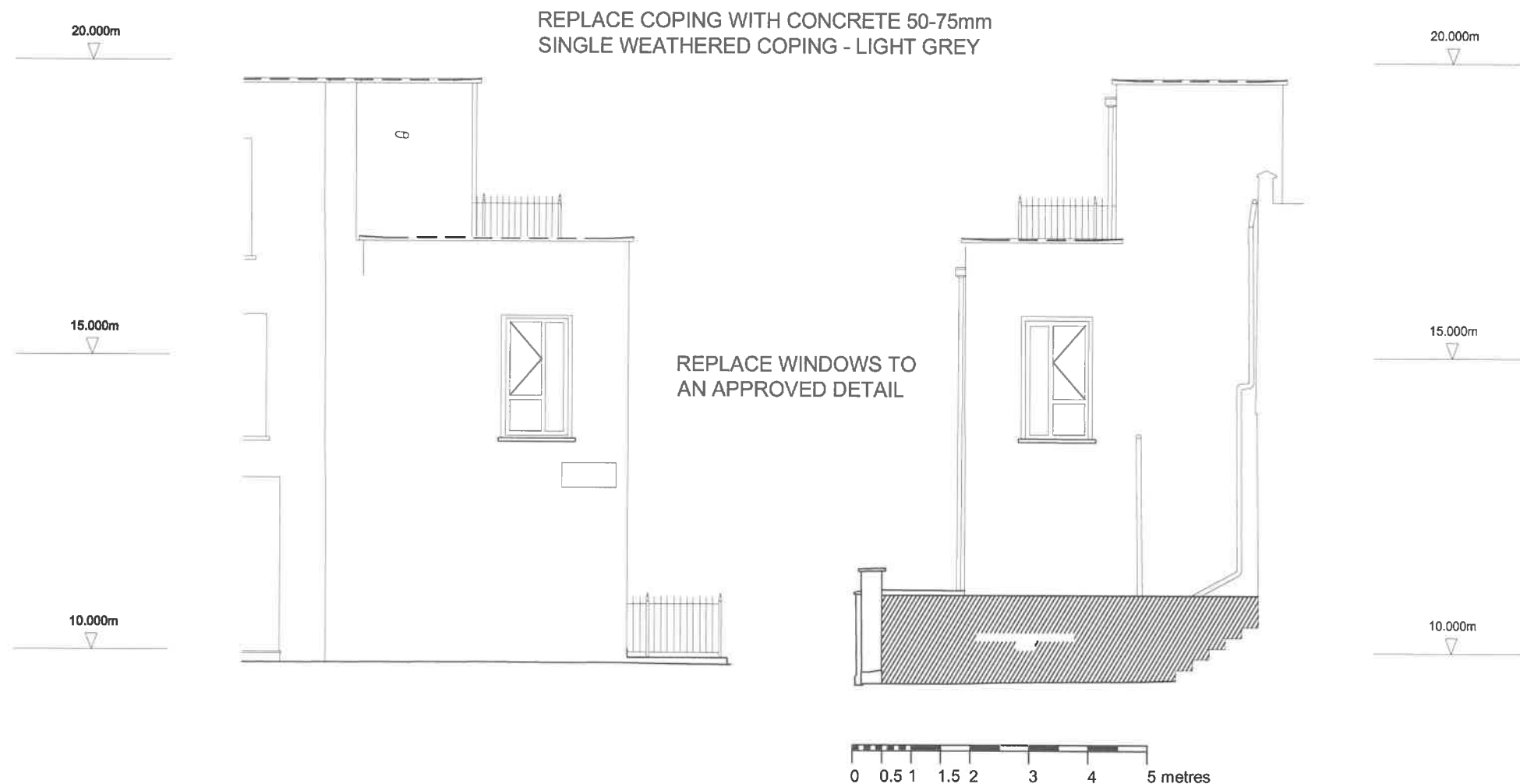
Haverstock Hill Elevation



Prince of Wales Road Side Elevation



PROPOSED		B TITLE REVISED		NOV 24	
A WINDOWS REVISED				JULY 24	
Suffix	Revision	Date			
KLF STRUCTURAL DESIGN LIMITED Consulting Engineers SBC House Wallington SM6 7AH 020 8619 0359 KLF_Structural_Design@yahoo.com ©					
Job 201 TO 203 PRINCE OF WALES ROAD (FORMERLY 62A HAVERSTOCK HILL) LONDON NW3					
Title FRONT AND REAR ELEVATIONS					
Drawn	Date	Checked	Date	Scale	
TM	JUN 24			1:100 @ A3	
Sheet Size			Sheet No.		
A3			21064/E02		
Revision		A	B		



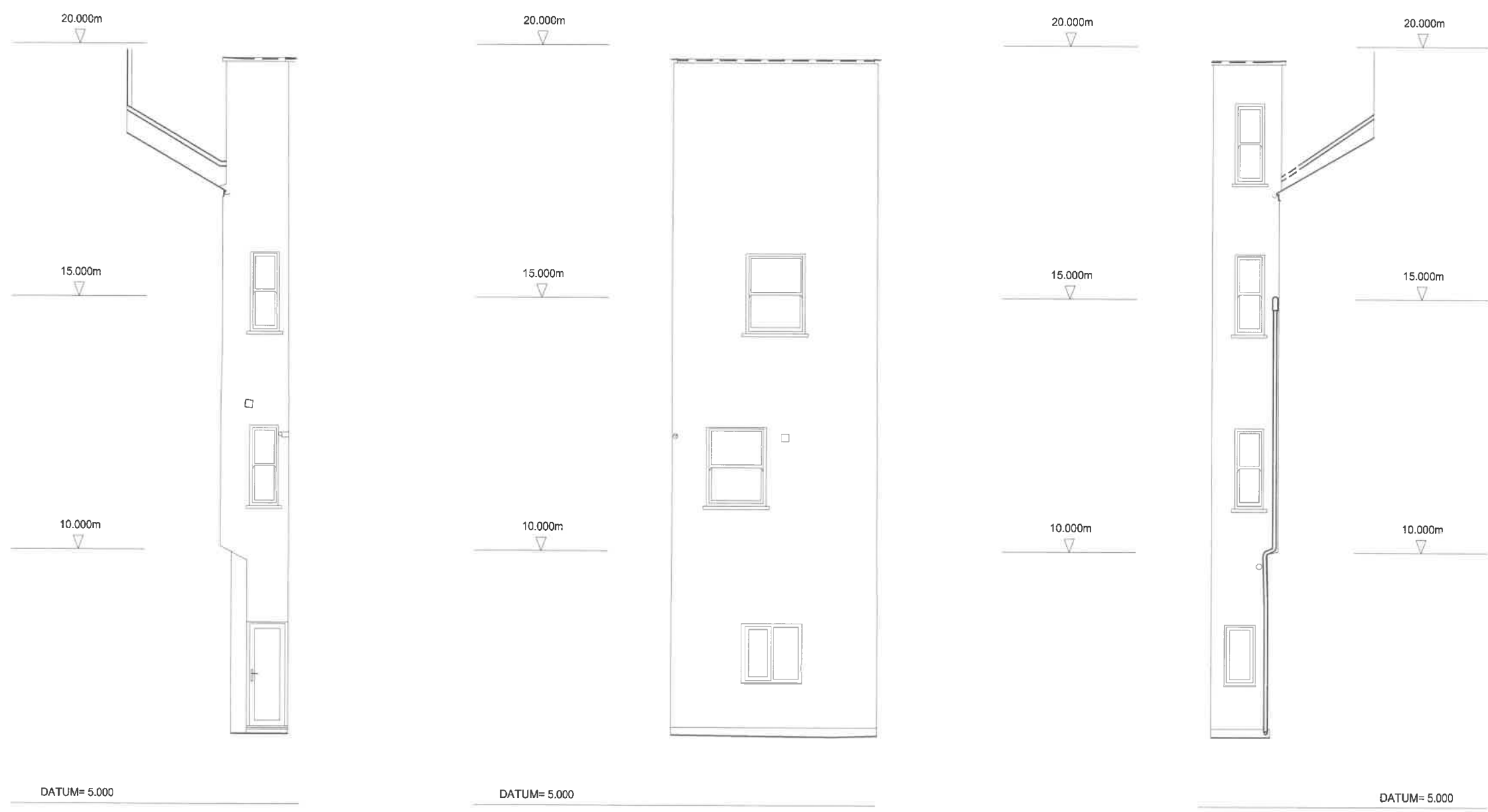
SIDE ELEVATIONS AT HAVERSTOCK HILL END

REPLACEMENT WINDOWS TO BE WHITE ALUMINIUM FRAMED CONTEMPORARY STYLE FINAL DETAILS TO BE APPROVED BY THE LONDON BOROUGH OF CAMDEN

PROPOSED

B TITLE REVISED		NOV 24	
A WINDOWS REVISED		JULY 24	
Suffix	Revision	Date	
KLF STRUCTURAL DESIGN LIMITED Consulting Engineers SBC House Wallington SM6 7AH 020 8619 0359 KLF_Structural_Design@yahoo.com ©			
Job 201 TO 203 PRINCE OF WALES ROAD (FORMERLY 62A HAVERSTOCK HILL) LONDON NW3			
Title HAVERSTOCK HILL END SIDE ELEVATIONS			
Drawn	Date	Checked	Date
TM	JUN 24		
Scale		1:100 @ A3	
Sheet Size		Sheet No.	
A3		21064/E03	
Revision		A B	

REPLACE COPING WITH CONCRETE 50-75mm
SINGLE WEATHERED COPING - LIGHT GREY



REPLACEMENT WINDOWS TO BE WHITE
ALUMINIUM FRAMED CONTEMPORARY
STYLE FINAL DETAILS TO BE APPROVED
BY THE LONDON BOROUGH OF CAMDEN

PROPOSED



ELEVATIONS NOT VISIBLE FROM STREET
THEREFORE RETAIN INSTALLED WINDOWS

INTERNAL LIGHTWELL ELEVATIONS

B	TITLE REVISED	NOV 24
A	WINDOWS REVISED	JULY 24
Suffix	Revision	Date
KLF STRUCTURAL DESIGN LIMITED Consulting Engineers SBC House Wallington SM6 7AH 020 8619 0359 KLF_Structural_Design@yahoo.com		
Job	201 TO 203 PRINCE OF WALES ROAD (FORMERLY 62A HAVERSTOCK HILL) LONDON NW3	
Title	INTERNAL LIGHTWELL ELEVATIONS	
Drawn	Date	Checked
TM	JUN 24	
Scale	1:100 @ A3	
Sheet Size	Sheet No.	
A3	21064/E04	
Revision	A	B