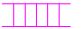






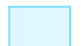
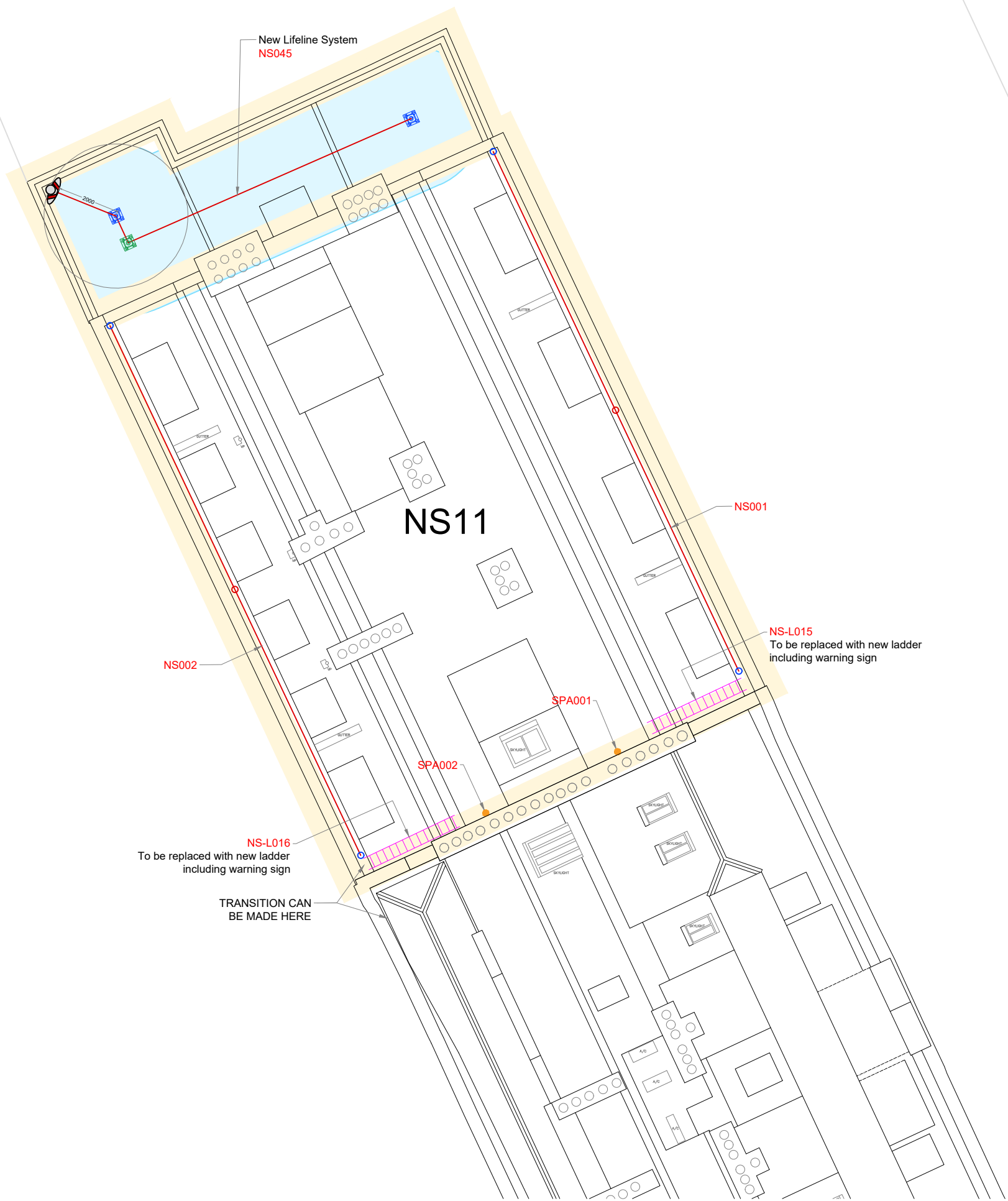
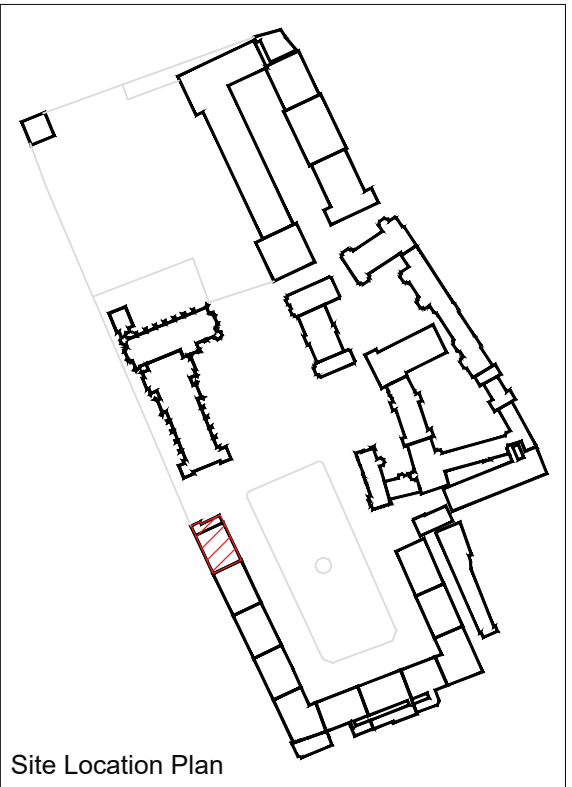


Rev	Date	Description	By	Chk
00	19/06/24	Issued for comment	CM	AF
-	17/09/24	Project number changed	CM	AF

-  Ladder/Steps
-  Horizontal Lifeline
-  End Penetration Post
-  Int Penetration Post
-  Single Point Post
-  End Anchor
-  Corner Anchor
-  Area of Reach



Notes:
 a. do not scale from this drawing
 b. Detail Drawings
 Lifeline post detail see dwg BSS-14331-002-Post
 Ladders NSL015 & NSL016 see dwg BSS-14331-003-NSL015-NSL016
 Caution on ladder sign see dwg BSS-14331-004-Sign



Suite B, Westmead House,
 Farnborough, GU14 7LP
 Tel: 01252 547277
 Fax: 01252 547306
 www.betasafetysystems.com

PRELIMINARY DRAWING

Client/Project
 The Honourable Society of Lincolns Inn
 Lincolns Inn Field

Drawing Title
 New Square 11 Roof Plan
 Fall Protection Assets Layout
 PROPOSED

Date 19/06/24	Drawn By CM	Chk. By AF
------------------	----------------	---------------

Scale NTS @A3	Page Size A3	Units mm
------------------	-----------------	-------------

Drawing No. BSS-14331-001-NS11-Assets-PR	Rev 00
---	-----------