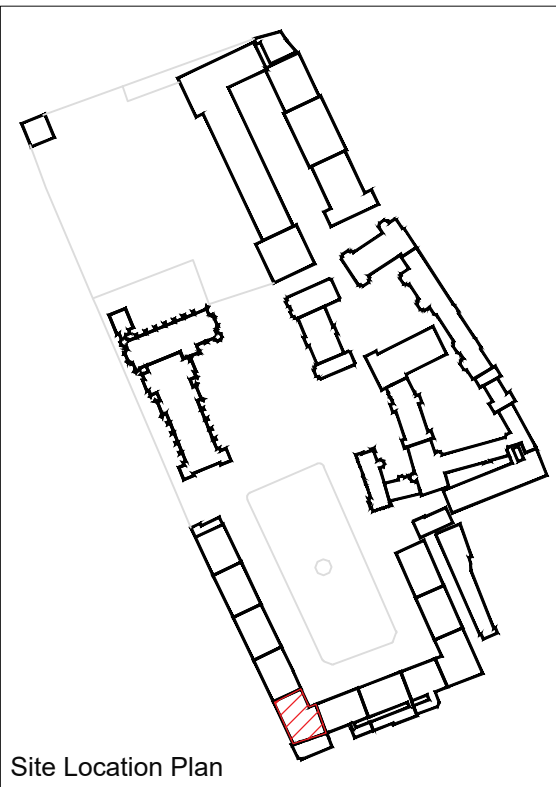


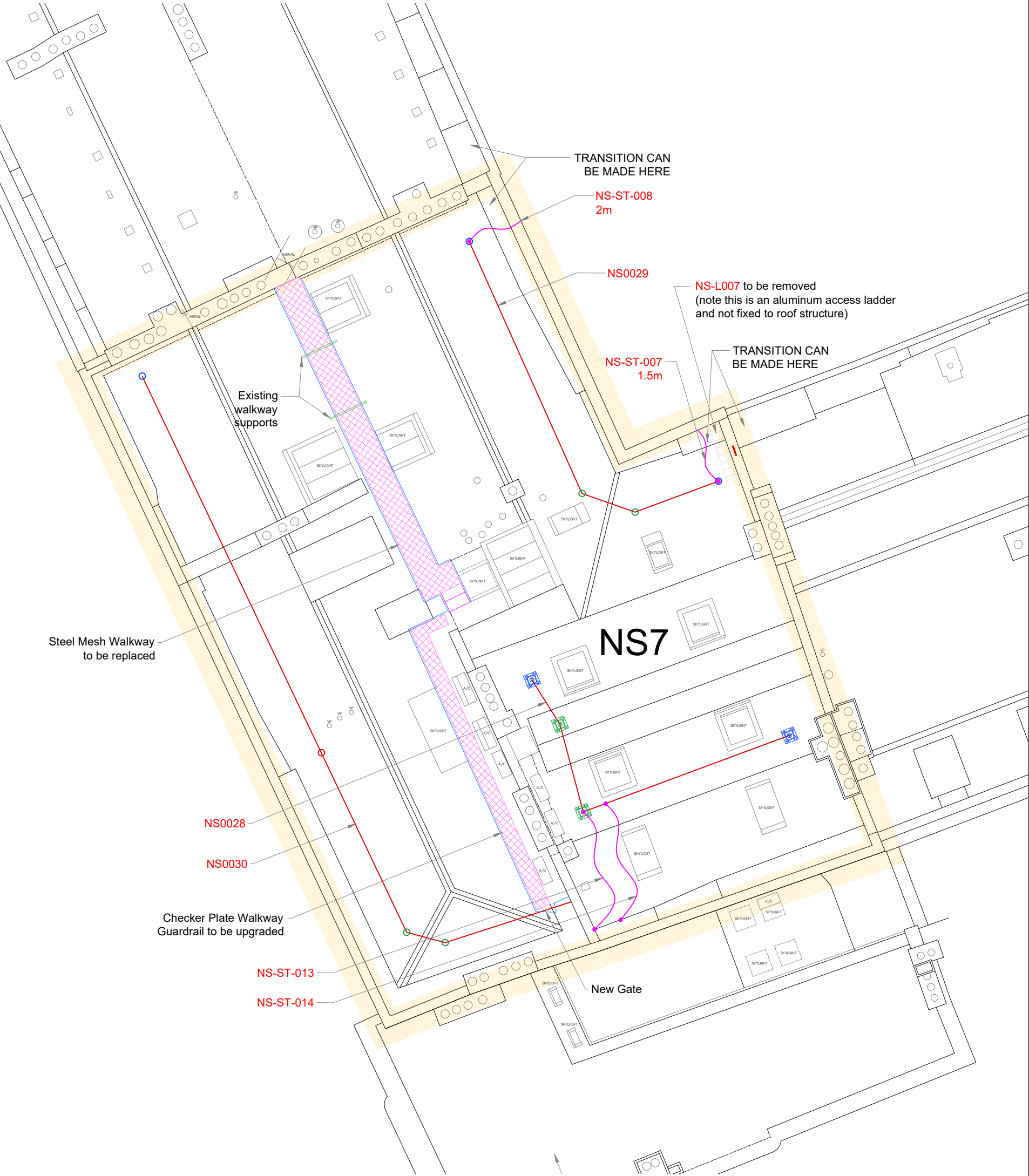
Rev	Date	Description	By	Chk
00	21/08/24	Issued for comment	CM	AF
-	17/09/24	Project number changed	CM	AF

Example of Proposed Walkway



Site Location Plan

NEW SQUARE 7 ASSETS PROPOSED



- Horizontal Lifeline
- End Penetration Post
- Int Penetration Post
- Corner Penetration Post
- End Anchor
- Corner Anchor
- Strop
- ▨ Ladder/Steps
- ▨ Walkway/Platform
- Guardrail
- Hand Hold

Notes:
 a. do not scale from this drawing
 b. Detail Drawings
 Walkway detail see dwg BSS-14331-010-Walkway

beta safety systems
 Suite B, Westmead House,
 Farnborough, GU14 7LP
 Tel: 01252 547277
 Fax: 01252 547306
 www.betasafetysystems.com

PRELIMINARY DRAWING

Client/Project
 The Honourable Society of Lincolns Inn
 Lincolns Inn Field

Drawing Title
 New Square 7 Roof Plan
 Fall Protection Assets Layout
 PROPOSED

Date	21/08/24	Drawn By	CM	Chk. By	AF
------	----------	----------	----	---------	----

Scale	NTS @A3	Page Size	A3	Units	mm
-------	---------	-----------	----	-------	----

Drawing No.	BSS-14331-NS7-Assets-PR	Rev	00
-------------	-------------------------	-----	----