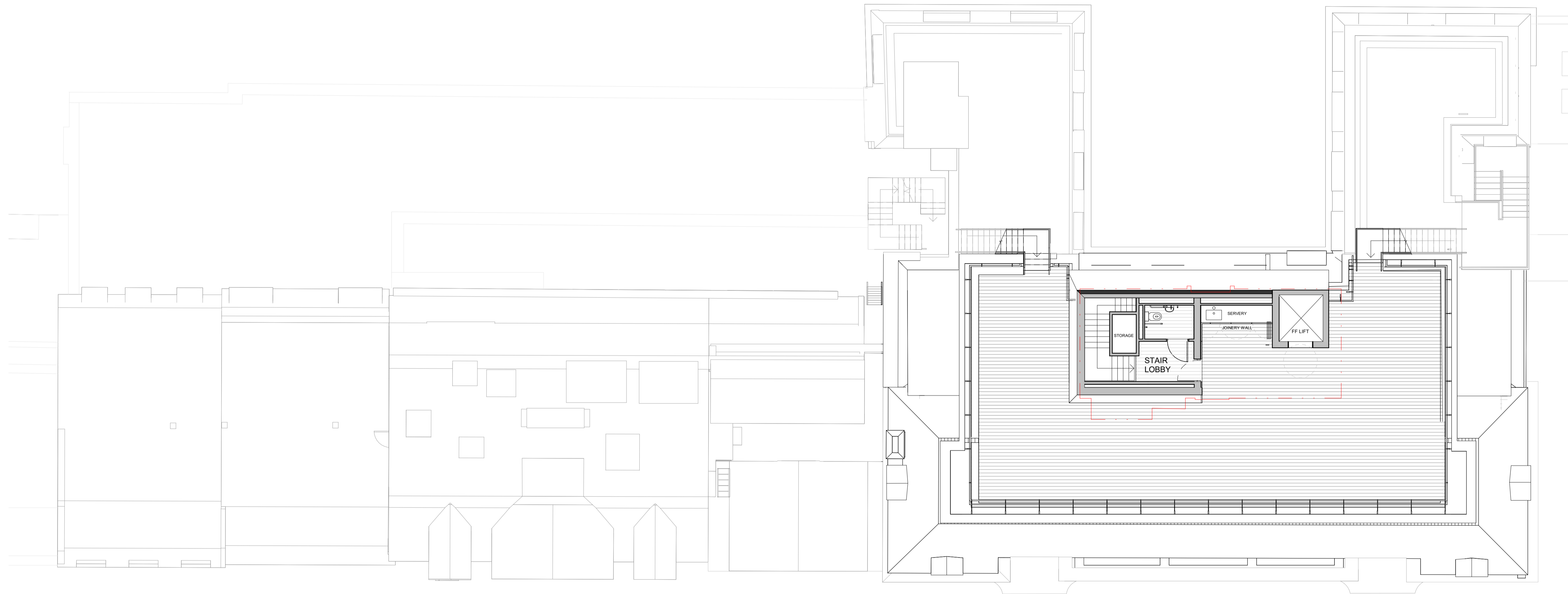


252 HIGH HOLBORN

268 HIGH HOLBORN

268 HIGH HOLBORN

# W H E T S T O N E P A R K



# L I N C O L N ' S I N N F I E L D S

Do not scale. All dimensions to be confirmed on site. Information contained in this drawing is the sole copyright of Orms designers + architects ltd and is not to be reproduced without permission.

The setting out and dimensions of any existing building elements shown are based on collated archive information, measured surveys and site investigations as available. If there is any reasonable doubt in relation to position of existing building fabric which affects costs or final construction details the contractor should undertake relevant surveys to verify the information, and any changes discovered should be notified to the architect.

This drawing should be read in conjunction with all other project information prepared by Orms and design consultants. In the event of any conflicts between information on this drawing and other project information that may be contained on models, specifications, schedules, etc. seek clarification with Orms.

Please note that dwg or other cad formats provided in addition to pdf documentation are issued to aid co-ordination only. Use of written dimensions and levels is permitted, but all other dimensions extracted from the digital content are not to be relied upon. Data should always be checked against pdf information.

Drawings issued with construction record status or revision are not surveys and are to be verified on site prior to making any use of them. Orms do not take responsibility for any discrepancies between the drawings and actual as build condition.

### Key Plan

### CDM risks relevant to this drawing

### Notes

All existing information are based on measured surveyed information on 22/03/2021 by 3Sixty Measurement:

- 20446-02 revB
- 20446-03 revC
- 20446-04 revC
- 20446-05 revB
- 20446-06 revB
- 20446-07 revB
- 20446-08 revB
- 20446-09 revB
- 20446-10 revB
- 20446-11 revA
- 20446-12 revB
- 20446-13 revB
- 20446-14 revB
- 20446-15 revB
- 20446-16 revB
- 20446-17 revB
- 20446-18 revB
- 20446-19 revA
- 20446-20 revA

P01	24.11.15	First Issue
Rev.	YY.MM.DD	Description

Checked by YA Approved by CMc  
 Status code  
**S2 - AUTHORISED AND ACCEPTED**  
 Status description  
**PLANNING**

## Orms

6th Floor  
 160 Old Street  
 London  
 EC1V 9BW  
 0207 833 8533  
 orms@orms.co.uk  
 orms.co.uk

Project  
**15-23 Lincoln's Inn Fields**

Drawing title  
**Proposed  
 Planning - General Arrangement  
 Upper Seventh Floor Plan**

Scale@A1 Project No.  
**1 : 100 2268**

Drawing Number	Rev.
LIF - ORM - ZZ-07 - DR - A - 12208	P01