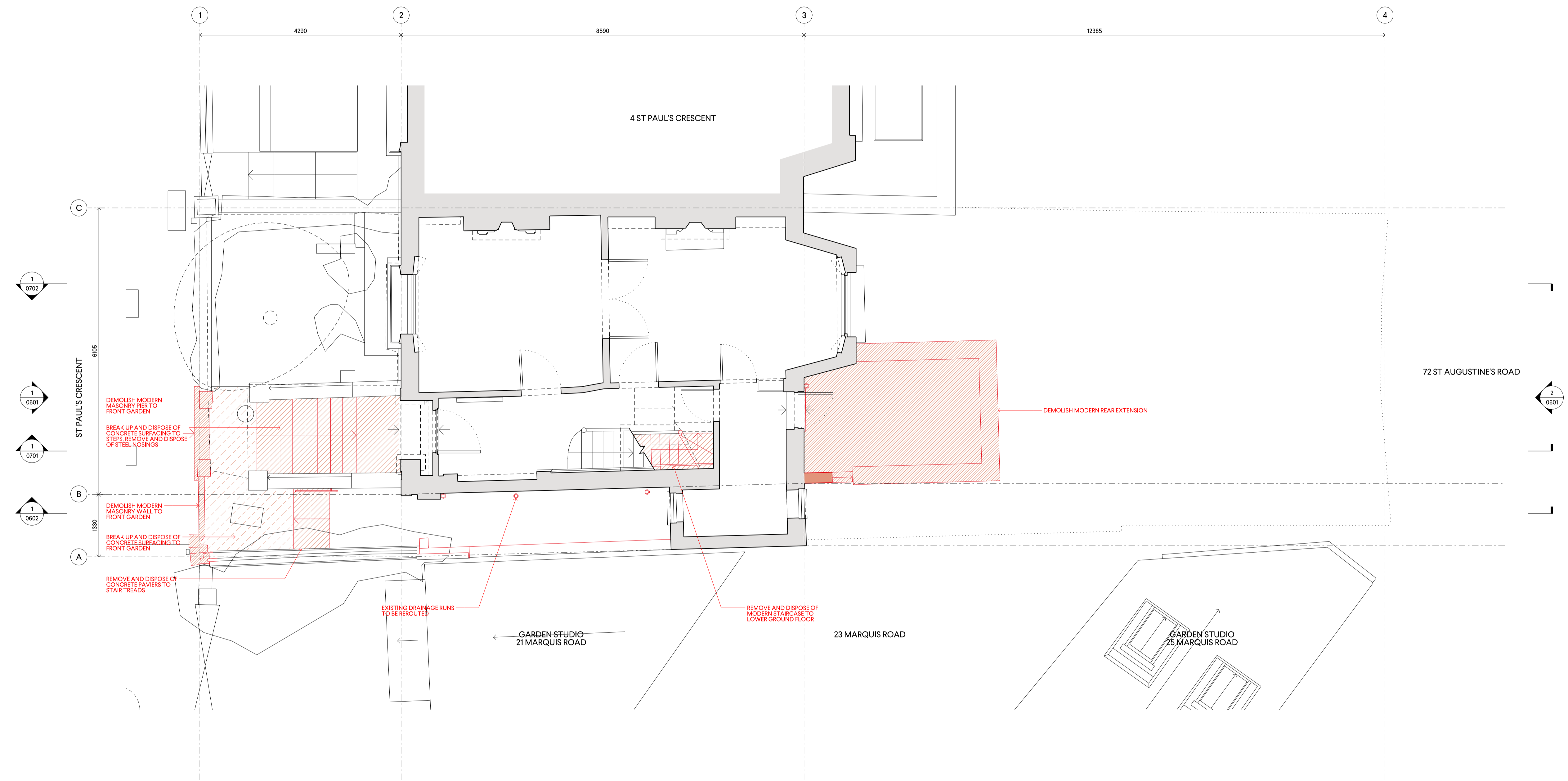


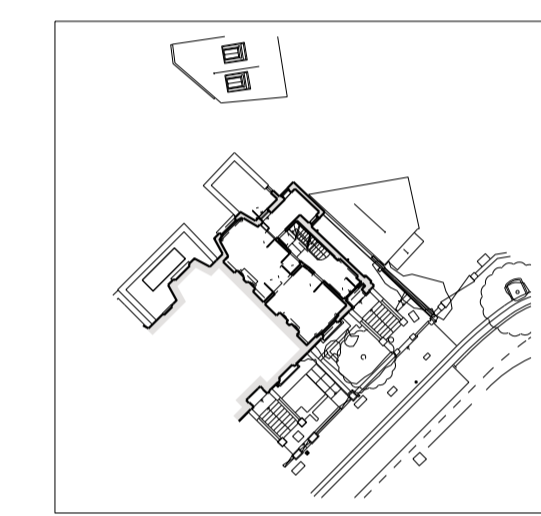
DO NOT SCALE OFF THIS DRAWING. DIMENSIONS, AREA AND LEVELS ARE ONLY APPROXIMATE AND SUBJECT TO SITE SURVEY. ALL DIMENSIONS TO BE CHECKED ON SITE. ANY DISCREPANCIES OR VARIATIONS TO BE REPORTED TO THE ARCHITECT BEFORE WORK COMMENCES.

THIS DRAWING TO BE READ IN CONJUNCTION WITH THE SPECIFICATION, WHERE PROVIDED, AND ALL RELEVANT CONSULTANTS DRAWINGS AND/OR SPECIFIC DRAWINGS, DOCUMENTS AND ANY DISCREPANCIES OR VARIATIONS ARE TO BE REPORTED TO THE ARCHITECT BEFORE THE AFFECTED WORK COMMENCES.

THIS DRAWING IS PROTECTED BY COPYRIGHT, AND MUST NOT BE COPIED OR REPRODUCED WITHOUT THE WRITTEN CONSENT OF HOD ARCHITECTS LTD. NORTH POINTS SHOWN ARE INDICATIVE. ©



PLANNING



- DEMOLITION KEY**
- DEMOLITION CUT THROUGH
 - MASONRY AND STRUCTURE TO BE DEMOLISHED
 - FIXTURES AND FITTINGS TO BE REMOVED
 - FINISHES TO BE REMOVED

P2	18.11.24	PLANNING	WG
P1	23.09.24	PRE-APPLICATION	WG
	28.08.24	INFORMATION	WG
	09.08.24	INFORMATION	WG
00	22.07.24	INFORMATION	WG
REV	DATE	NOTES	INIT.

PROJECT
2 ST PAUL'S CRESCENT, NW19XS

DRAWING TITLE
DEMOLITION GROUND FLOOR PLAN

STATUS			
PLANNING			
SCALE @ A1	CREATED	DRAWN	CHECKED
1:50	17.08.2024	WG	GP
DRAWING NO.			ISSUE
0125-A-P-0502			P2

0207 937 0007
INFO@HODARCHITECTS.CO.UK
13 PRINCE OF WALES TERRACE
KENSINGTON
LONDON W8 5PG

House of Design
Architects

1 1:50
DEMOLITION GROUND FLOOR PLAN

