

1.1 Upper Ground Floor - Goods Lift Opening - Revision to Listed Building Consented Proposal

As per the previously consented scheme the works require the re-opening of an existing lift access tow lift number 2 located at the Upper Ground Floor.

The original building had two lift landings to east and west lifts at this level, when the lifts were upgraded the access to this level was changed with the decision at the time not to have access from Goods Lift 2 to this level. The original aperture was filled in with stone cladding to match the surroundings.

It is still proposed to re-open this access to the current goods lift 2. however during the current works we have been able to survey the internal shaft of the lift and the shaft does not align with proposed opening as previously envisioned.

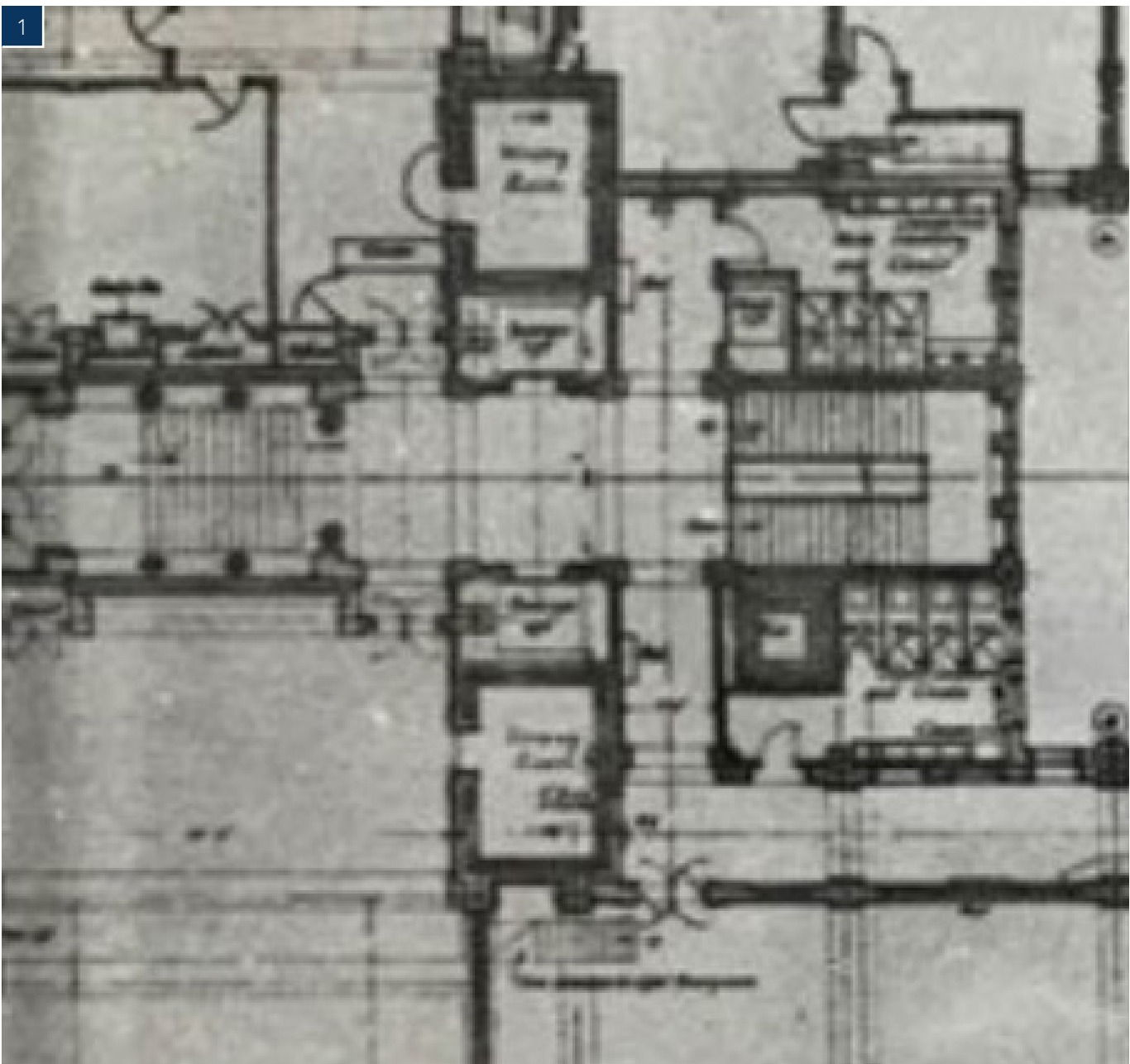
We are therefore requesting an amendment to the opening up strategy / elevation of this area to allow the new lift doors and opening to align with the internal arrangement of the shaft. Without this amendment the proposed opening will not function.

We have followed the principles established by the consented scheme and finishes will be upgraded to the quality of the spaces within other refurbished parts of the building. New stone panels will be installed to match the existing panels - it will also be investigated if the existing panels can be reused and relocated.

The upper panels that will need to be temporarily removed to facilitate the opening up works will be carefully removed and then reinstated once the opening up works are complete.

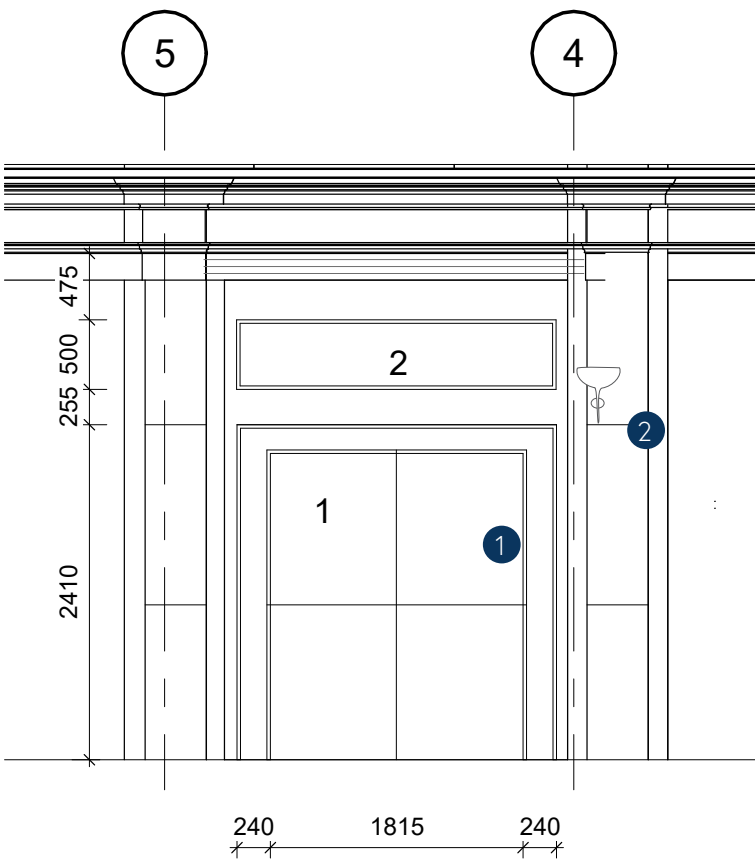
The stone urns that are located by the proposed opening will be relocated within this space and reused.

The principles of the revised openings alongside the exsting condition and the consented proposal are shown on the next sheet.

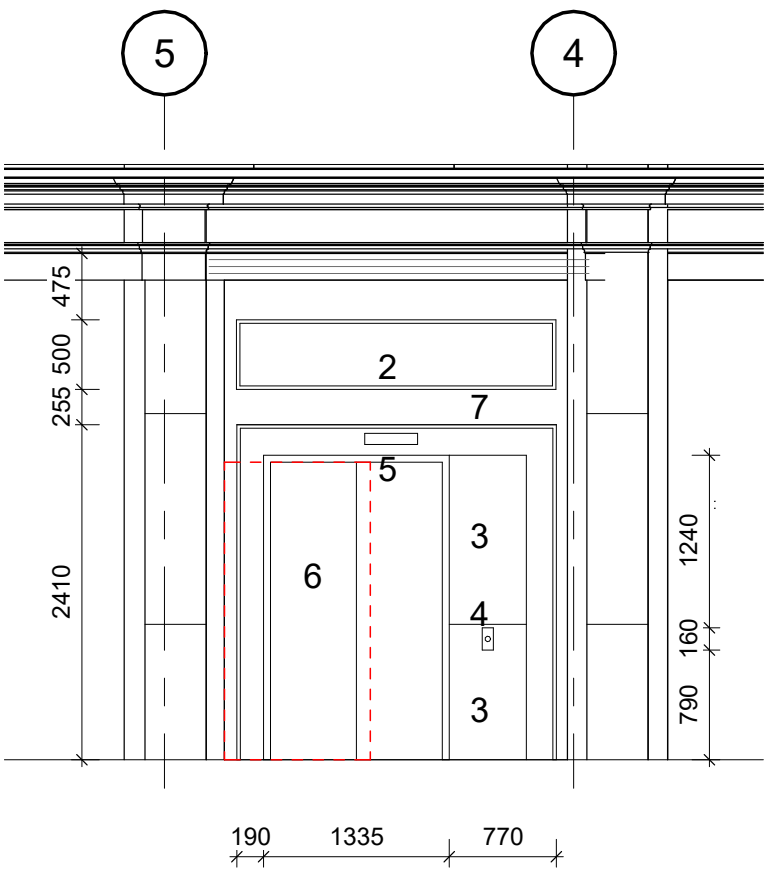


1. Original Upper Ground Floor Plan - Showing the original lift openings to the lobby

1.2 Upper Ground Floor Level - Goods Lift - Revise Lift Opening Proposal

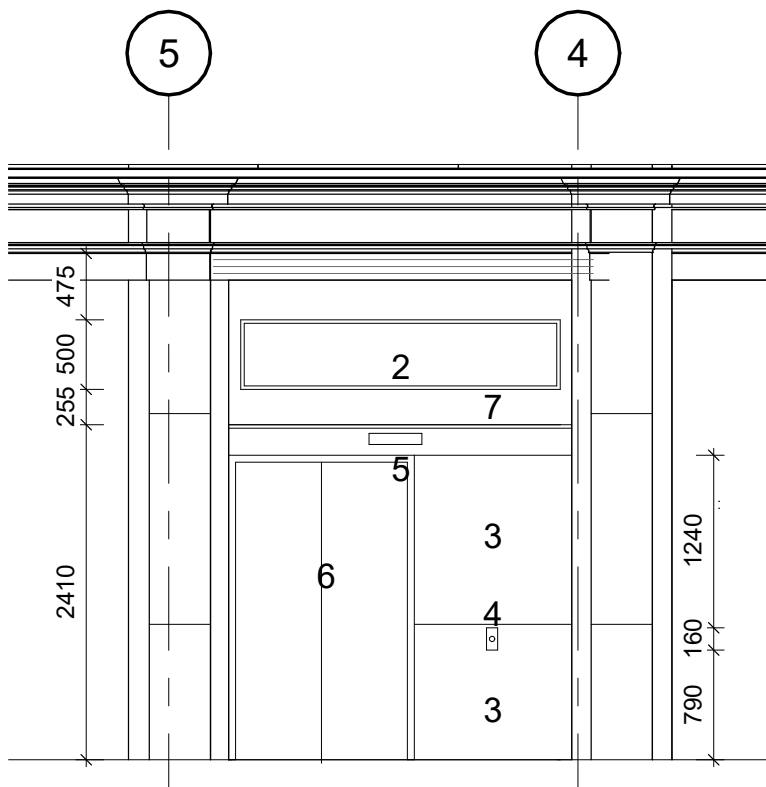


Existing Section - Upper Ground Floor - Internal Interventions.
1 : 50



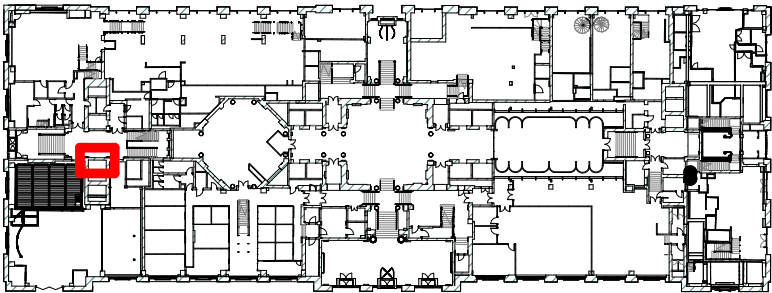
Previously Consented Section / Consented Section For Information - Upper Ground Floor - Internal Interventions
1 : 50

Red line indicates the location of the existing lift shaft & required location of new doors.



Proposed Section - Upper Ground Floor - Internal Interventions
1 : 50

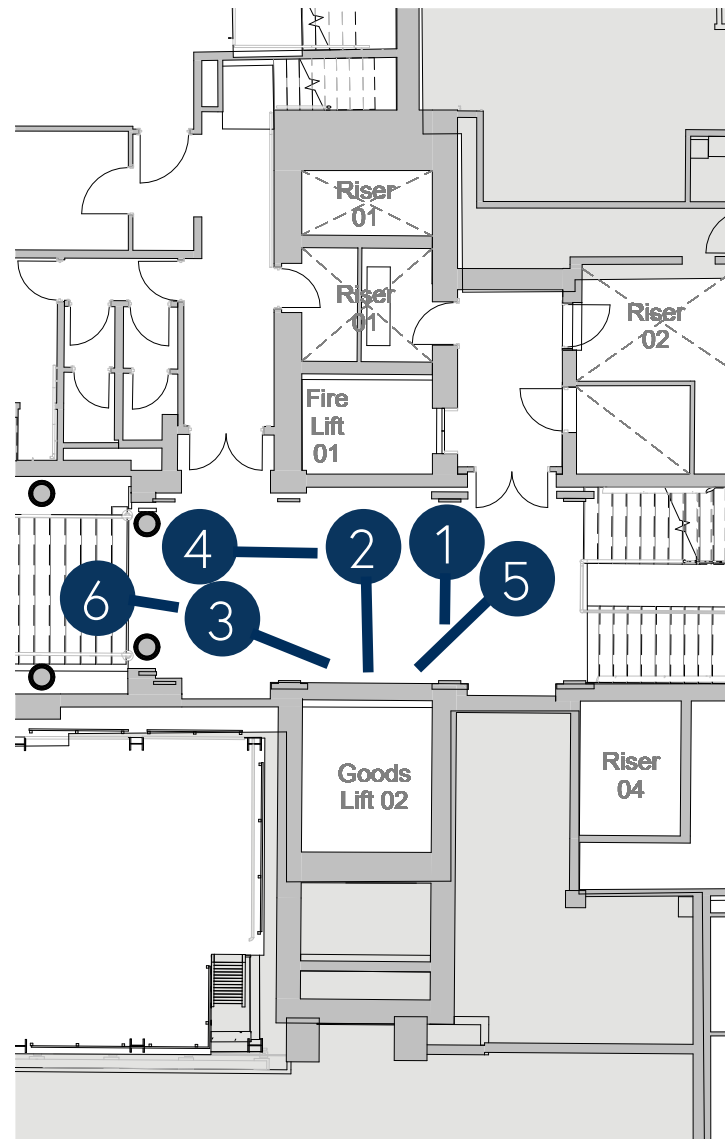
- Key
- 1 - Existing Stone Cladding to be removed to create a new opening.
 - 2 - Existing Light fitting retained in this location.
 - 3 - Reconstituted panels to match existing and installed in these locations, it will be investigated if the existing panels can be reused.
 - 4 - New lift call button
 - 5 - New lift landing display
 - 6 - New goods lift door frame (in simulated brushed bronze finish to match existing on other floors).
 - 7 - Existing stone panels and lintel to remain. These will need to be carefully removed during lift opening works and re-installed.



UGF Key Plan - Red line indicates the location of the existing lift
1 : 1000

2.4 Existing Photographs

Upper Ground Floor Lift 2



1. Existing Upper Ground Floor - Signage
2. Existing Upper Ground Floor
3. Existing Upper Ground Floor
4. Existing Upper Ground Floor - Showing existing stone infills either side of lobby
5. Existing Upper Ground Floor
6. Existing Upper Ground Floor
7. Red Dashed line indicated location of proposed new opening

