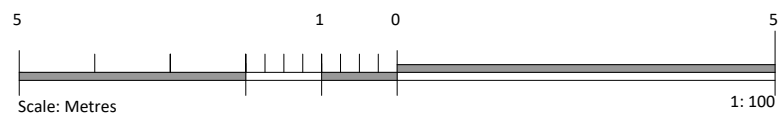
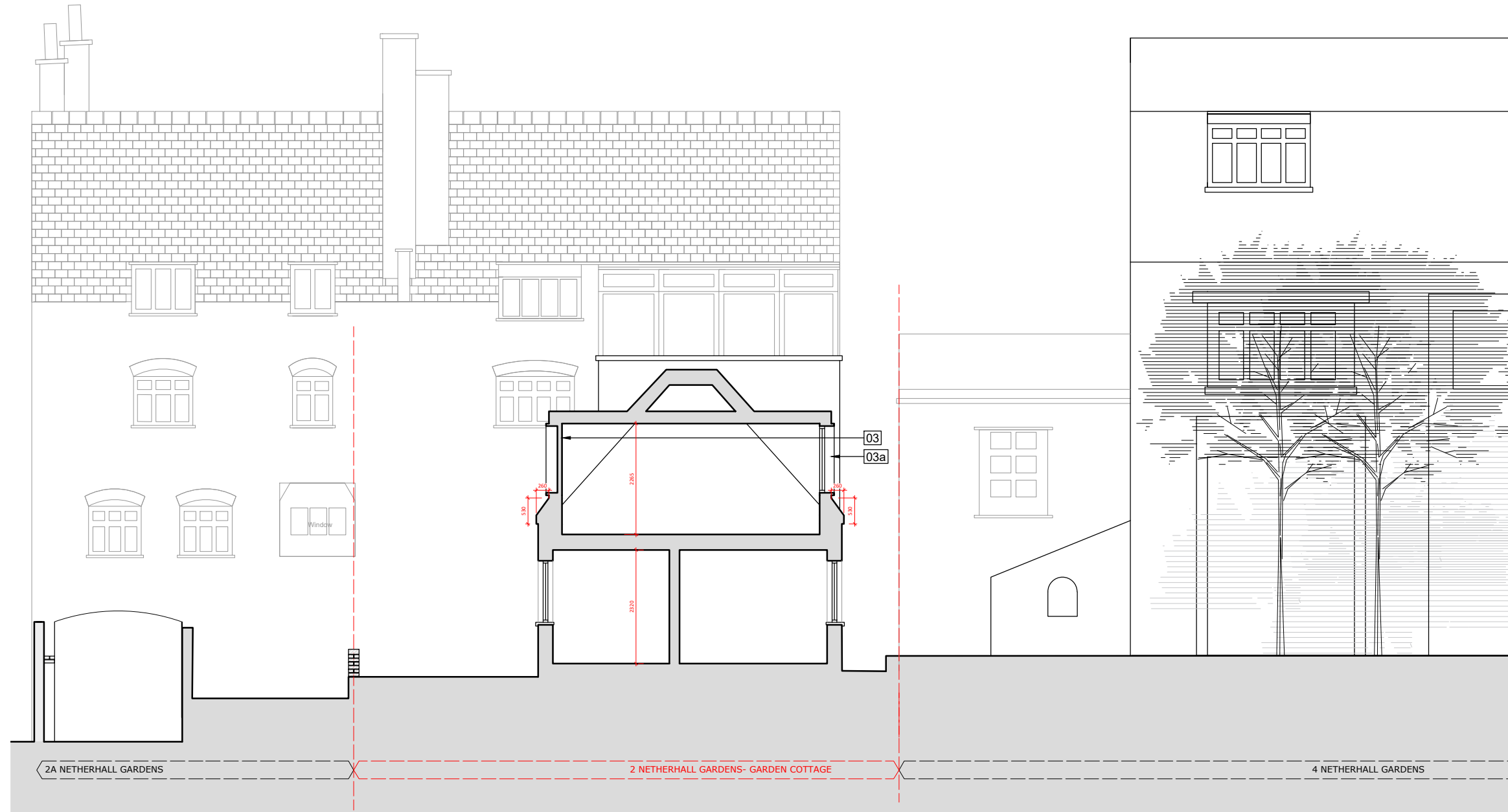


PROPOSED SECTION BB



03 New blind dormer extensions in timber construction with zinc clad cheeks and a custom Accoya timber framed fixed insulated panel system with a vertically coffered design

03a New dormer extensions in timber construction with zinc clad cheeks and a custom Accoya timber framed window system with a vertically coffered design (openable 45° double glazed windows)

rev
project
**2 Netherhall Gardens
Garden Cottage
NW3**

client

drawing
PROPOSED
Section BB

drawn	checked	date
JM	JE	18.11.24
scale		paper size
1:100	@	A3

drawing no. **8445 / 87**

PLANNING

MDC
METROPOLITAN
DEVELOPMENT
CONSULTANCY

66 Bickenhall Mansions
Bickenhall Street
London W1U 6BS
t: +44(0)207 486 6675
e: info@mdclondon.com
w: www.mdclondon.com