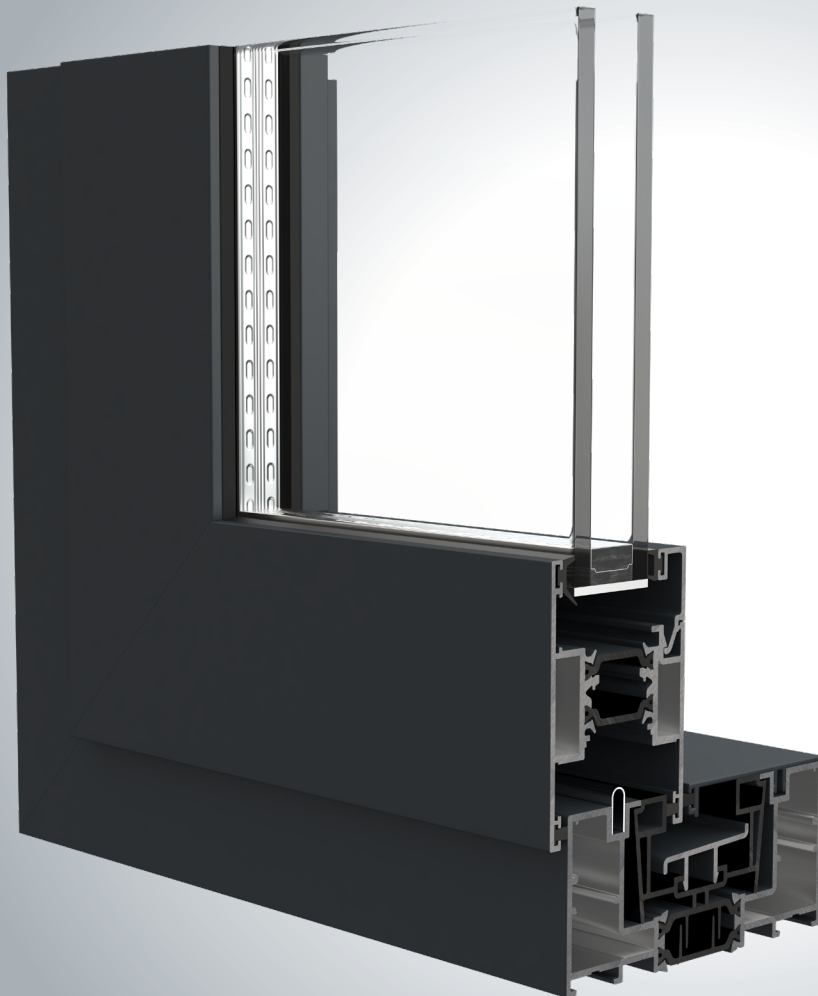
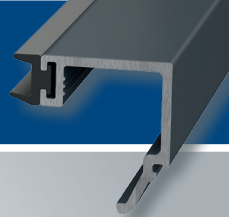


FEATURING SMART'S NEW  
**QUICK  
GLAZE** *BEAD*



## DESIGNING PRODUCT SOLUTIONS FOR

- ◆ Inline sliding and lift & slide options
- ◆ Slim interlock option
- ◆ Available in single and dual colour formats in a wide choice of finishes
- ◆ Option of colour matched accessories
- ◆ Suitable for use with auto slide opening mechanisms
- ◆ PAS24 compliant multipoint locking options
- ◆ British Standard Kitemarked system achieving: KM 530838 PAS24
- ◆ Long life, low maintenance

## Introducing... VISOGLIDE SERIES

The Visoglide range of high-quality sliding doors combines contemporary styling with outstanding performance.

Visoglide doors are perfect for sliding commercial entrances where large opening apertures are required, or as a statement sliding door for residential properties, where the doors maximise light and provide unimpeded panoramic views. All the system's main sections feature an extended polyamide thermal break that allows Visoglide doors to achieve U values from 1.6 to 1.4 W/m<sup>2</sup>K with a 1.0 centre pane (dependent on profiles selected).

Building on the proven success of the established Visoglide system, the range has now been expanded, opening up even more aesthetic and performance options.

# Visoglide PLUS

The ultimate large format sliding door, Visoglide Plus has been designed to meet the requirements of the 2025 Building Regulations, with the system having been designed to deliver enhanced strength, thermal performance and weather resistance. Visoglide Plus features Smart's innovative co-extruded glazing gasket, which means the profiles and beads are supplied with the glazing gasket pre-extruded into the profile, enabling fast and efficient fabrication installation.

- ◆ **Combines outstanding strength, weather and thermal performance with elegant sight lines**
- ◆ **U-values down to 1.4W/m<sup>2</sup>K**

## FEATURES AND SPECIFICATIONS

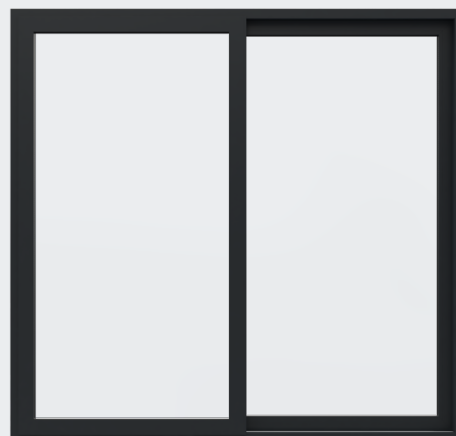
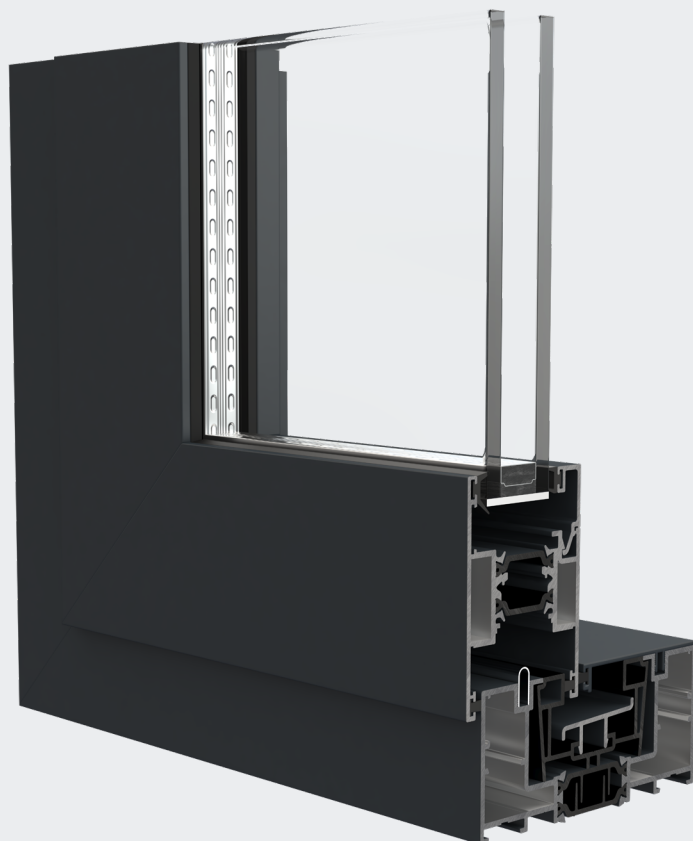
- ◆ 1.4 W/m<sup>2</sup>K (1.0 centre panel)
- ◆ Meets limiting value for existing dwellings
- ◆ 1.1 W/m<sup>2</sup>K (0.7 centre panel)
- ◆ Exceeds notional value for new build
- ◆ PAS24
- ◆ BS Kitemark
- ◆ Quick Glaze Bead
- ◆ Co-extruded gasket sash
- ◆ Slim interlock

\*U Values based on door 2500mm x 2725mm

## TECHNICAL PERFORMANCE

U value (with 1.0 CP)	U value (with 0.7 CP)	Air	Water	Wind	Glass (mm)	Document L	Security	Frame Width (mm)	Frame Depth (mm)
1.4 W/m <sup>2</sup> K	1.1 W/m <sup>2</sup> K	Class 3, 600Pa	Class 7a, 300Pa	Class AE, 2400Pa	up to 38mm	Yes	PAS24	52mm	102.5

THRESHOLD DETAIL



MEETING STYLE DETAIL