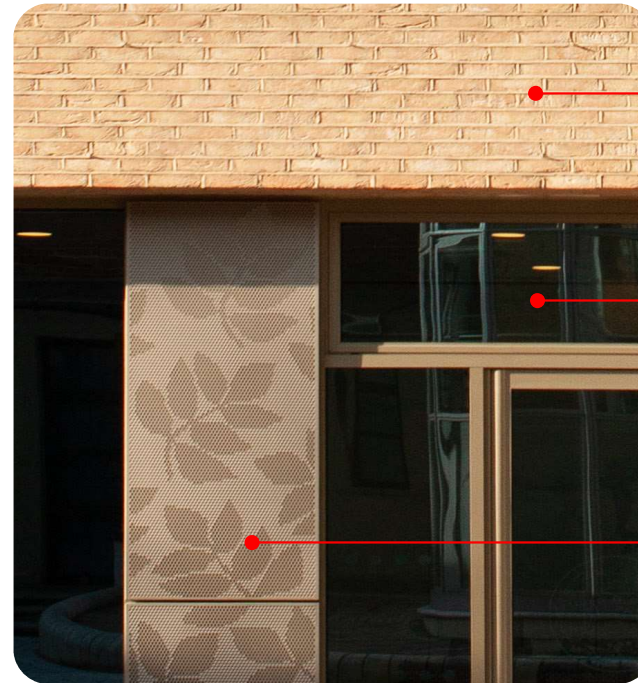


PHILIP MEADOWCROFT ARCHITECTS

FACING MATERIALS PROPOSED FOR  
CORAM GREGORY HOUSE

(To match existing Coram Queen Elizabeth II Centre)



Sawston Buff brick

PPC Aluminum  
SMARTSystem  
windows and external  
doors

PPC Aluminum  
Perforated Panel