

Important note

All dimensions in millimetres. Where dimensions are not given, drawings must not be scaled and the matter referred back to Charlton Brown Architects.

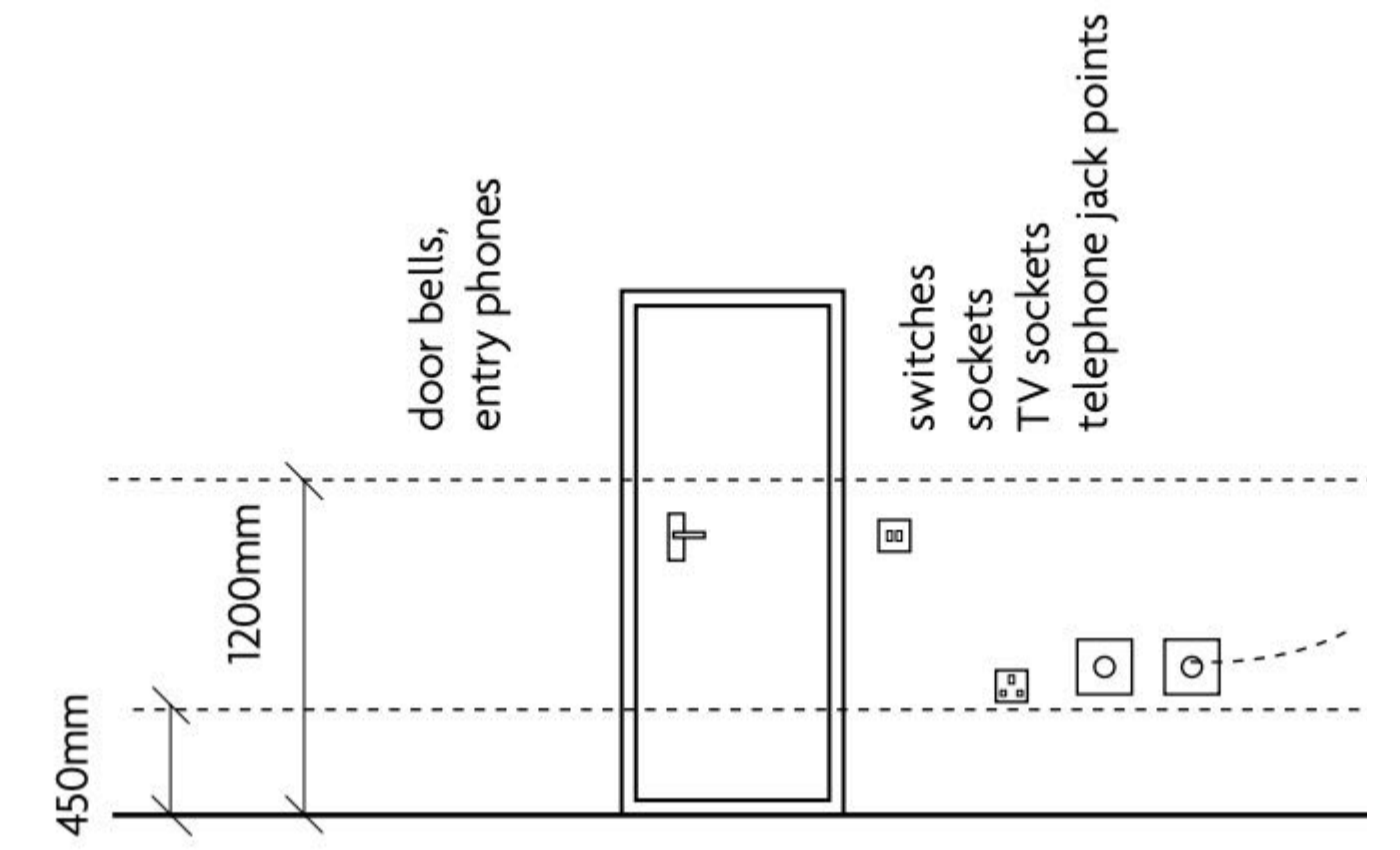
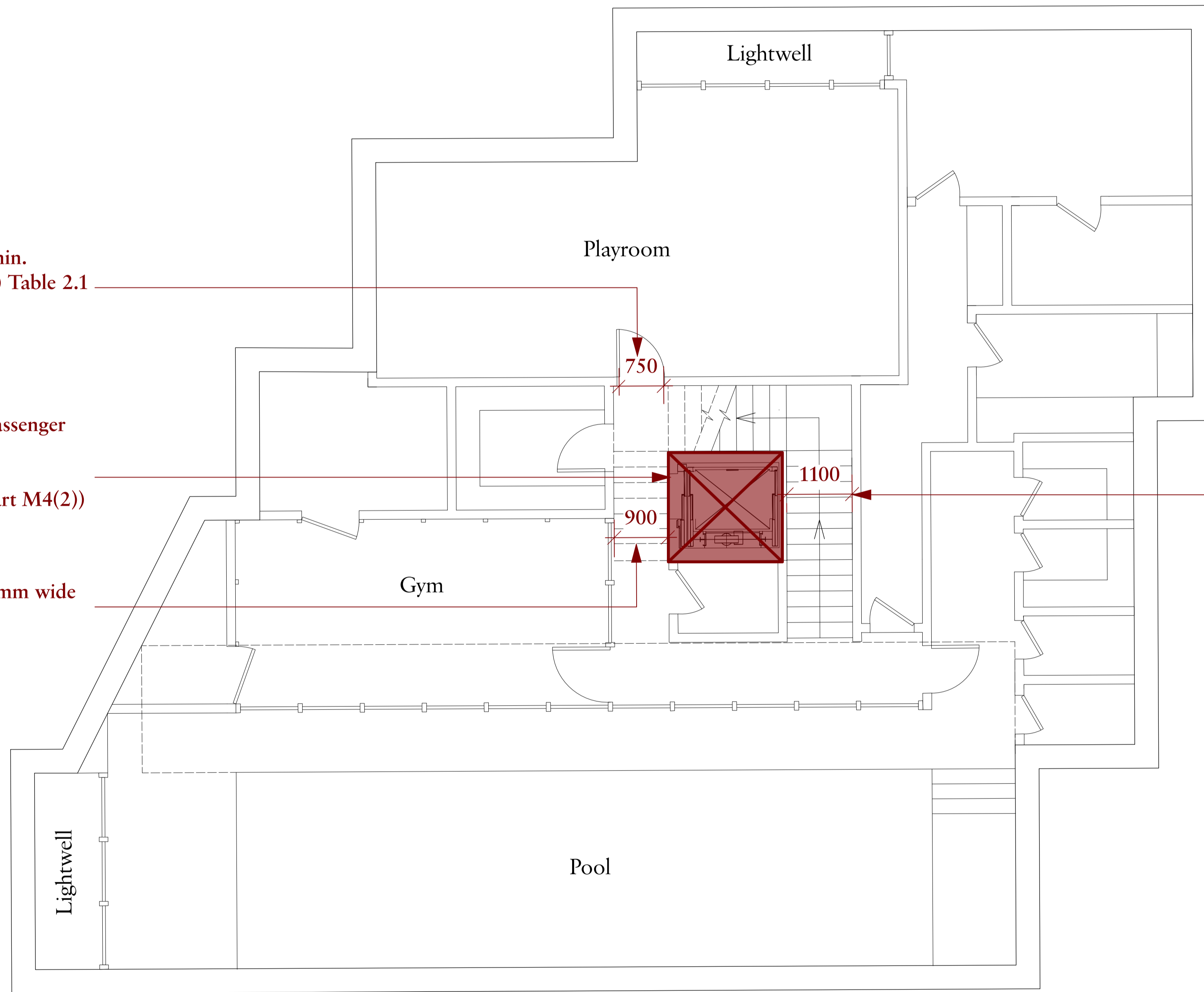
All dimensions and conditions are to be checked on site by the contractor prior to preparing drawings or commencing any work. The contractor is responsible for checking that there is no conflict between site dimensions and drawn dimensions.

In the event of any detail or dimensional conflict between Charlton Brown Architects drawings, the matter must be referred back to Charlton Brown Architects for clarification

Doors to habitable rooms min. 750mm wide, as Part M4(2) Table 2.1

Private Part M compliant passenger lift (Exceeds requirements of Part M4(2))

Internal corridors min. 900mm wide as Part M4(2) diagram 2.3.



Typical placement of sockets & controls

Key



Indicates for comparison the minimum required area in Approved Document M4(2)

Approved Document K compliant stair over 850mm wide (Exceeds requirements of Part M4(2))

P1	20/11/2024	First issue	
Rev	Date	Details	By

Charlton Brown Architecture & Interiors

10-11 St. George's Mews, Primrose Hill, London, NW1 8XE
Telephone +44(0)20 7794 1234
Email office@charltonbrown.com
Website www.charltonbrown.com

Client
Mr Alex Begun

Project
38 Frognal Lane

Drawing Title
Basement Floor Accessibility Plan

Date	Drawn	Checked
19/11/2024	LS	LS

Scale
n/a

Issue Status
Planning

Project Number	Drawing Number	Revision
20022	PL-80-099	P1