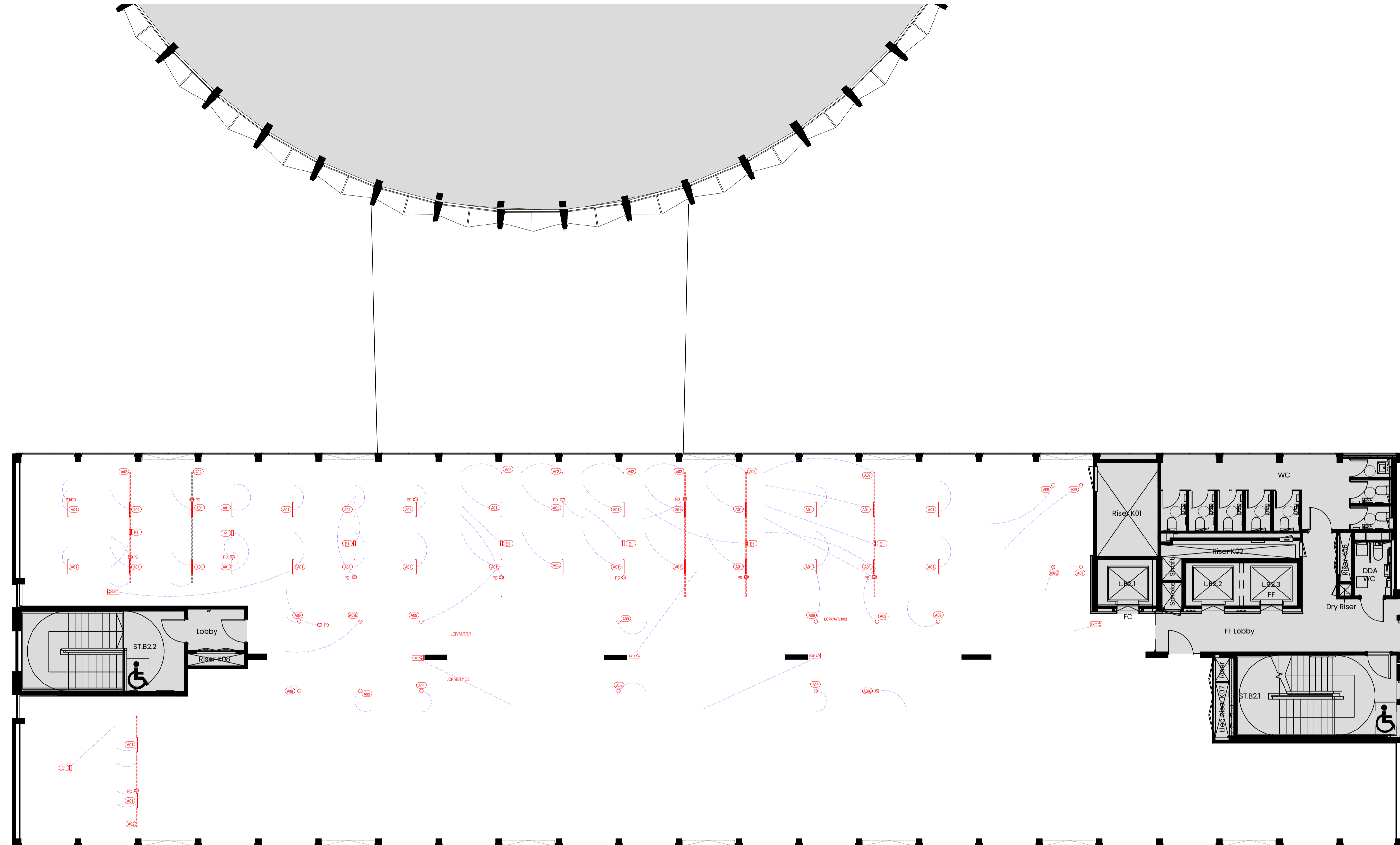


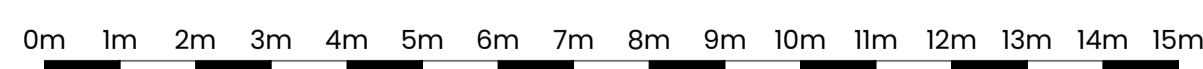
High Level Lighting Strip Out

Seventh Floor



KEY TO HIGH LEVEL LIGHTING STRIP OUT LAYOUT
Some symbols shown may not appear in drawing, and may not be to scale. Drawing must be printed in colour.

	Lighting track removed / relocated
	Lighting reference
	Emergency lighting unit removed / relocated
	Perimeter detector unit removed / relocated
	Linear lighting unit removed / relocated
	Item relocation line



© MARIS INTERIORS LLP Property & Copyright
Use of drawings is not permitted nor can they be copied, duplicated or distributed without the consent of the LLP.

All designs are the sole property of MARIS INTERIORS LLP, and may not be used, transferred, or disclosed to a third party without the express permission of MARIS INTERIORS LLP. Electronic copies of this drawing are supplied for convenience only. No dimensions or other information should be used from the electronic copy. Do not scale from this drawing. If you are a contractor, you shall be responsible for any associated cost. Any claims for variations or extras shall be submitted to this office for assessment prior to approval of any such variation or extra. This drawing is to be read in conjunction with all other Contract documentation. This drawing must be signed otherwise it will be invalid. Building parameters taken from as built drawings provided. Check survey undertaken only, subject to statutory approval. All dimensions shown are in millimetres unless otherwise shown.

- Drawing first produced NA 01/10/2024

REV	DESCRIPTION	BY	DATE

DRAWING STATUS
PRE CONSTRUCTION

Blackline

Address
Space House
1 Kemble Street
London, WC2B 4AN

Project Number	Ref	Floor	Detail	Rev
33194	01	07	HLL-SO	-

Drawing Title
**Seventh Floor
High Level Lighting Strip Out**

Produced by	Scale	Date Created
NA	1:100@A1	01/10/2024

MARIS INTERIORS
The Harequinn Building
65 Southwark Street
London SE1 0HR

T 020 7802 8886
E hello@maris.co.uk
W maris.co.uk