

Copyright: All rights reserved. This drawing must not be reproduced without permission.

Only the original drawing should be relied upon. Contractors, sub-contractors and suppliers must verify all dimensions on site before commencing any work or making any shop drawings.

All shop drawings to be submitted to the architect / interior designer for comment prior to fabrication.

This drawing is to be read in conjunction with the architect's / interior designer's specification, bills of quantities / schedules, structural, mechanical & electrical drawings and all discrepancies are to be reported to the architect / interior designer.

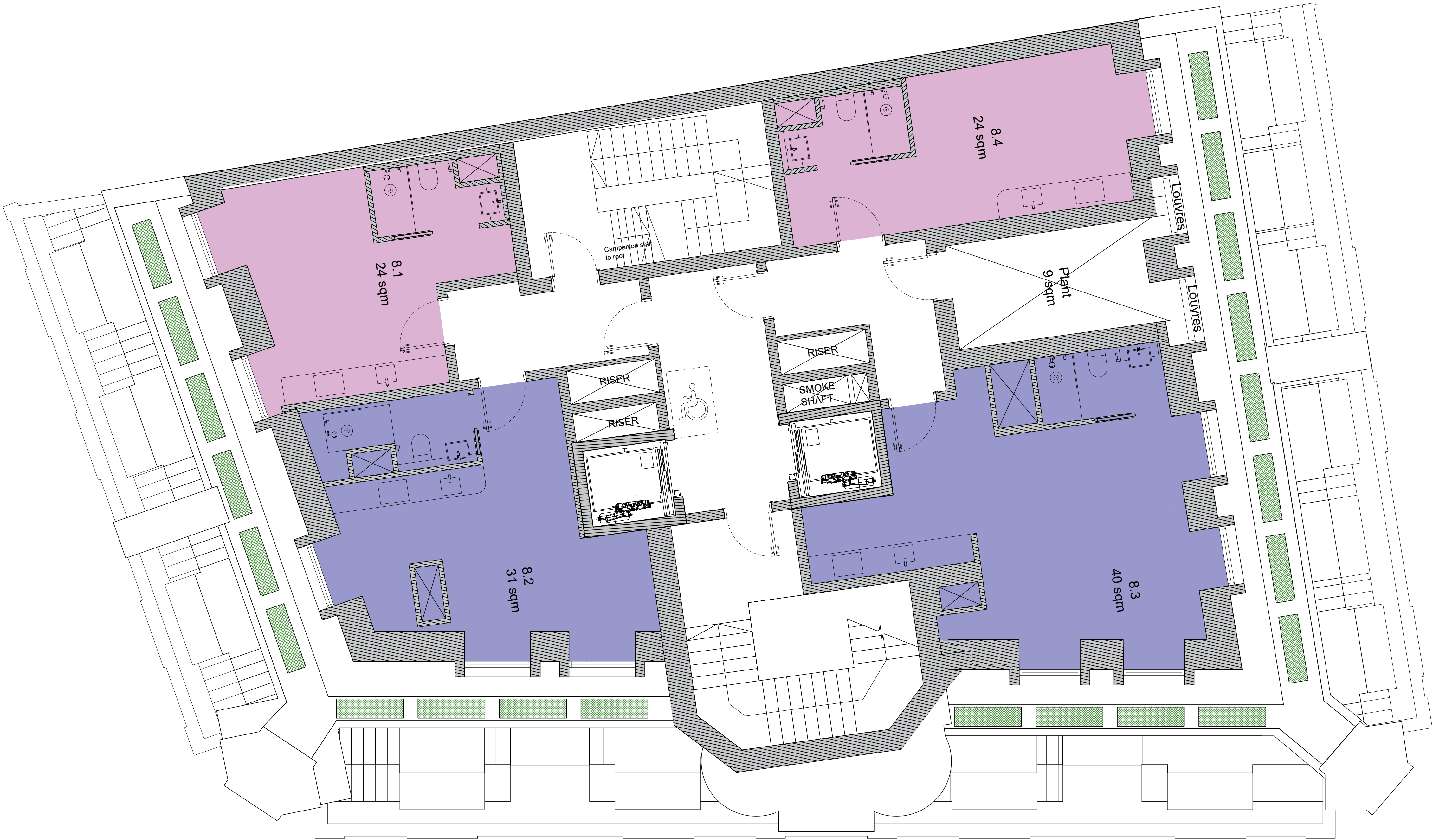
Do not scale from this drawing. Dimensions are in millimetres unless otherwise stated.

All fire related elements and items as set out within the Fire Engineers Fire Strategy Report. Fire rating of elements / components require fire certification from certified test bodies to be provided to both the Fire Engineer & Building Control for review and sign off, prior to procurement and installation.

Studio Moren Ltd will coordinate with all other consultants in relation to statutory items / elements under that consultants control. These items may be shown on Studio Moren Ltd drawings for coordination purposes, however they remain under that consultants design and control.

NOTES

- Beyond Suite
20-25sqm
- Beyond Suite
28-35sqm
- Beyond
Balcony Suite
38-45sqm
- Hotel
FOH
- Hotel
BOH
- Commercial
FOH
- Commerical
BOH
- Plant
- Consented
Scheme
Envelope



Proposed Eighth Floor Plan
Scale 1:50@A1



P3	Revised Layout	11.11.24	ES	PW
P2	Layout Updated	17.10.24	AN	PW
P1	First Issue for Planning	23.07.24	TP	PW
rev	amendments	date	by	chk

studio moren
studio moren Ltd
architecture urban design
interior design creative media
www.studiomoren.co.uk
studio@studiomoren.co.uk
architecture

57d
jamestown road
london nw1 7db
UK

t: 020 7267 4440

project
99-103 Kingsway
Holborn

client
GMS Estates

drawing title
Proposed
Eighth Floor Plan

drawing status
PLANNING

scale	date	drawn by
1:50 @ A1	06.02.24	TP
1:100 @ A3		
job no.	drawing no.	revision
2017	A-100-108	P3