

PLANTING SCHEDULE

Specimen Trees					
Quantity	Species	Common Name	Height	Girth	Specification
4 No.	Betula utilis subsp. jacquemontii	Himalayan birch	400-450cm	16-18cm	Min.200: 3x: RB
2 No.	Carpinus betulus 'Fastigiata'	Hornbeam	400-450cm	16-18cm	Min.200: 3x: RB
1 No.	Liquidambar styraciflua 'Worplesdon' sweet gum		400-450cm	16-18cm	Min.200: 3x: RB
1 No.	Malus domestica	Apple	300-350cm	Multi stem	3x: C: 3stems
1 No.	Prunus domestica Victoria	Victoria plum	300-350cm	Multi stem	3x: C: 3stems
4 No.	Prunus yedoensis	Yoshino Cherry	400-450cm	16-18cm	Min.200: 3x: RB
1 No.	Pyrus communis	European pear	300-350cm	Multi stem	3x: C: 3stems
Note: RB: Rootball, C: Container, 3x: Number of times transplanted, Min200: minimum clear stem in cm.					

Hedges*					
Quantity	Species	Common Name	Height	Density	Specification
10 No.	Carpinus betulus	Hornbeam	100-120cm	1 per metre	1 Metre Trough instant hedge
* Note: Transplant from the meanwhile use metal planters.					

Herbaceous Planting Mix - 84.0m²			
Mix (%)	Species	Size	Density (m²)
5	Achillea 'Terracotta'	1L C	9
10	Anemone 'Honorine Jobert'	1L C	9
5	Aster macrophyllus 'Albus'	1L C	9
3	Bergenia 'Eroica'	1L C	9
10	Carex 'Everillo'	1L C	9
10	Epimedium 'Frohnleiten'	1L C	9
5	Geum 'Totally tangerine'	1L C	9
5	Lysimachia atropurpurea 'Beaujolais'	1L C	9
7	Miscanthus sinensis 'Kleine Fontaene'	1L C	9
7	Molina caerulea 'Heidebraut'	1L C	9
10	Penstemon digitalis 'Husker Red'	1L C	9
3	Primula vialii	1L C	9
5	Rudbeckia fulgida var. daemii	1L C	9
10	Sesleria autumnalis	1L C	9
Total :100%			

Bulbs - planted in drifts at 15 bulbs / m²		
Mix (%)	Species	Size
75	Galanthus nivalis	4/5
25	Tulipa praestans 'Fusilier'	7/8
Total :100%		

Shade Tolerant Planting Mix - 23.0m²				
Herbaceous Perennials				
Mix (%)	Species	Size	Density (m²)	
3	Anemone 'Honorine Jobert'	1L C	9	
3	Aser macrophyllus 'Albus'	1L C	9	
3	Aster novi-belgi 'Lady in Blue'	1L C	9	
7	Astrantia major 'Claret'	1L C	9	
7	Bergenia 'Abendglut'	1L C	9	
7	Epimedium versicolor 'Sulphureum'	1L C	9	
7	Epimedium x rubrum	1L C	9	
7	Euphorbia amygdaloides var robbiae	1L C	9	
3	Geranium phaeum 'Samobor'	1L C	9	
7	Geranium 'Rozanne'	1L C	9	
6	Helleborus x hybridus	1L C	9	
7	Heuchera villosa 'Palace Purple'	1L C	9	
3	Persicaria amplexicaulis 'Atropurpurea'	1L C	9	

Ornamental Grasses and Ferns			
Mix (%)	Species	Size	Density (m²)
10	Asplenium scolopendrium	1L C	9
15	Dryopteris filix-mas	1L C	9
5	Luzula nivea	1L C	9
Total :100%			

Bulbs - planted in drifts at 15 bulbs / m²		
Mix (%)	Species	Size
25	Narcissus 'Actaea'	12/14
25	Narcissus 'Tete-a-tete'	10/11
25	Scilla mischtschenkoana	6/7
25	Scilla siberica	6/7
Total :100%		

Rain Garden - 35.0m²				
For the base and inlet				
Mix (%)	Species	Size	Density (m²)	
10	Carex pendula	2L C	9	
10	Iris pseudocorus	2L C	9	
10	Juncus effusus	2L C	9	
10	Lobelia cardinalis	2L C	9	
10	Zantedeschia aethiopica	2L C	9	

For the garden edge			
Mix (%)	Species	Size	Density (m²)
10	Calamagrostis brachytricha	2L C	9
5	Campanula glomerata	2L C	9
10	Deschampsia cespitosa	2L C	9
10	Geranium Rozanne ('Gerwat'PBR)	2L C	9
5	Hemerocallis lilioasphodelus	2L C	9
10	Miscanthus sinensis 'Morning Light'	2L C	9
Total :100%			

Ornamental Planting Mix - 6.6m² (Metal Planters)				
Herbaceous Perennials				
Mix (%)	Species	Size	Density (m²)	
25	Lavandula angustifolia 'Munstead'	2L C	10	
15	Rosmarinus officinalis 'Sunkissed'	2L C	10	
15	Salvia officinalis 'Tricolor'	1L C	10	
15	Thymus vulgaris	1L C	10	
30	Stipa tenuissima 'Pony Tails'	2L C	10	
Total :100%				

Bulbs - planted in drifts at 15 bulbs / m²		
Mix (%)	Species	Size
50	Allium atropurpureum	10/11
50	Tulipa 'Early Glory'	11/12
Total : 100%		

Amenity Grass Mix: Barenbrug E4 - Fine Turf 39m ² , Sowing Rate: 30g / m ²		
Mix (%)	Species	Common Name
40	Sergei	Strong Creeping Red Fescue
40	Barpearl	Slender Creeping Red Fescue
20	Musica	Chewings Fescue
Total :100%		

Wildflower Meadow Mix: Emorsgate EL1 - Flowering Lawn Mixture 17m², Sowing Rate: 4g / m²		
Species	Common Name	Specification
Wild Flowers (20%)		
Betonica officinalis	Bentony	Seed: Commercial-origin
Centurea nigra	Common Knapweed	Seed: Commercial-origin
Galium verum	Lady's Bedstraw	Seed: Commercial-origin
Leontodon Hispidus	Rough Hawkbit	Seed: Commercial-origin
Lotus corniculatus	Birdsfoot Trefoil	Seed: Commercial-origin
Plantago lanceolata	Ribwort Plantain	Seed: Commercial-origin
Primula veris	Cowslip	Seed: Commercial-origin
Ranunculus acris	Meadow Buttercup	Seed: Commercial-origin
Salium silaus	Pepper Saxifrage	Seed: Commercial-origin
Vicia cracca	Tufted Vetch	Seed: Commercial-origin
Medicago lupulina	Black Medic (Ag)	Seed: Commercial-origin
Trifolium repens	Small Leaved White Clover (Ag)	Seed: Commercial-origin
Grass (80%)		
Agrostis capillaris	Common Bent (Ag)	Seed: Commercial-origin
Carex flacca	Glaucous Sedge	Seed: Commercial-origin
Cynosurus cristatus	Crested Dogstail (Ag)	Seed: Commercial-origin
Festuca rubra	Red Fescue (Ag)	Seed: Commercial-origin
Phleum bertolonii	Smaller Cat's-tail (Ag)	Seed: Commercial-origin

PLANTING NOTE

Soil Amelioration
Soil sampling will be undertaken prior to planting to inform the soil amelioration methodology.

For soil compaction, existing vegetation will be cut down to ground level followed by shallow cultivation to decompact the soil. Deep subsoil cultivation is not required unless indicated by the soil sampling. For nutrient status / soil improvement, the most appropriate method of soil improvement will be guided by the soil sampling results.

- Planting stock:
All planting to conform to the National Plant Specification and shall be supplied in accordance with relevant British Standards including:
- BS 3936 Nursery Stock - Specification for trees and shrubs and ground cover plants
 - BS 4043 Recommendations for transplanting root balled trees
 - BS 4428 General Landscaping operations
 - BS 5236 Cultivation and planting of trees in the advanced nursery stock category
 - Any trees imported from Italy will need to be tested against the disease Phytophthora cinnamomi. Results will need to be in writing and demonstrate the trees are entirely disease free and with the information supplied by an accredited arboriculturalist.
 - Any trees imported from Italy will need to have a health certificate approved by the EU.

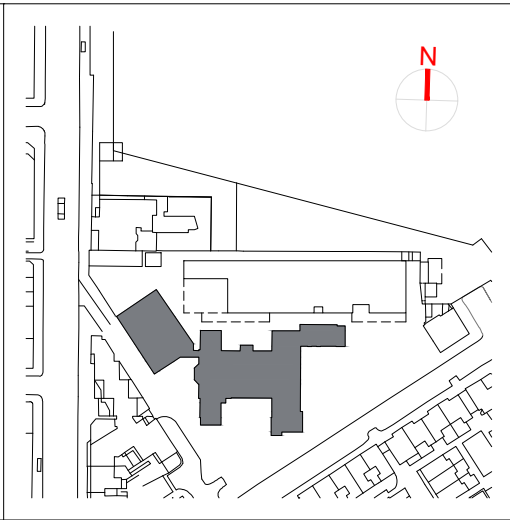
Trees:
No trees are to be planted within easement for future proofing and to avoid the need for use of root barriers. Contractor to ascertain the location of all sewers and services prior to tree planting.

Shrubs:
All shrubs shall be supplied as scheduled and comply with quality standards as set out in BS 3936: Part 1. All container grown stock to comply with current edition of British Container Growers Standards to the grade specified.

- Times of year for planting:
- Deciduous trees and shrubs: November to March.
 - Conifers and evergreens: November to March.
- (Both deciduous and coniferous trees to be planted in the dormant period, once they have been lifted by nurseries.)
- Container grown trees/plants: At any time if ground and weather conditions are favourable.
 - Watering and weed control: Provide as necessary.

C01	First Submission	MP	KM	DW		HS2 accepts no responsibility for any circumstances which arise from the reproduction of this document after alteration, amendment or abbreviation or if it is issued in part or issued incompletely in any way.
C02	Stage 4 Submission	MP	KM	DW		© Crown Copyright and database right 2020. All rights reserved. Ordnance Survey Licence number 100049190
C03	Entrance Design Update	MP	KM	DW		© Crown Copyright material is reproduced with the permission of Land Registry under delegated authority from the Controller of HMSO.
C04	Entrance Design Update	MP	KM	DW		This material was last updated on 2020 and may not be copied, distributed, sold or published without the formal permission of Land Registry. Only an official copy of a title plan or register obtained from the Land Registry may be used for legal or other official purposes.
C05	Tree size update	MP	KM	DW		
Rev	Description	Drawn	Checked	Approved	Con Acc	Scale with caution as distortion can occur.

- Legends/Notes:
- This drawing to be read in conjunction with all other landscape design drawings and specifications.
 - Do not scale from drawing, use figured dimensions only and all dimensions to be checked onsite.
 - All drainage to Engineer's specifications.
 - Work by others: Building works, CCTV Cameras, and Construction hoarding fencing are shown for information only and are not part of this package.
 - The external lighting strategy refer to Lighting Strategy Plan.





Registered in England
Registration No. 06791686
Registered office:
2 Snow Hill, Queensway,
Birmingham, B4 6GA

Official

Stage	Project/Contract	Creator/Originator		Sub Originator	
4	1CP01	MDS		LDA Design	
Drawing Title	Work Package Description	Discipline/Function		System description	
	SL23	LS		LST	
Drawing Title		Drawn by	Checked by	Approved by	Date
		MP	KM	DW	11/10/2024
		Scale	Size	Suitability	Rev.
		N.T.S.	A1	S6	C05
		Drawing No. 1CP01-MDS_LDE-LS-LST-SS08_SL23_GF-000001			