

Condition 4C Discharge Maria Fidelis Old School Access, CCTV, Lighting

Document No. 1CP01-MDS-TP-APP-SS08_SL20-000034

Work Package No. GWGM-04 MDS Consents

| Revision | Author | Checked by | Approved by | Accepted by (Not HS2) | Date approved | Revision Details |
|----------|-------------------|---------------------|-------------|--------------------------|------------------|--|
| C01 | Jonathan Haney | Brendan Shiggins | Pan Hu | N/A | 14/10/24 | Initial Revision (with Camden comments incorporated) |
| | | | | | | |
| | | | | | | |
| | | | | | | |

STAKEHOLDER REVIEW REQUIRED (SRR)

- ☐ COUNTY/DISTRICT/LONDON BOROUGH COUNCIL
- ☐ LOV
- ☐ LUL
- ☐ NRL
- ☐ TFL
- ☐ UTILITIES COMPANY
- ☐ OTHER

PURPOSE OF SRR

- ☐ ACCEPTANCE
- ☐ APPROVAL
- ☐ NO OBJECTION
- ☐ CONSENT

Contents

| | | |
|---|----------------------------------|---|
| 1 | Condition 4c Presentation Slides | 2 |
|---|----------------------------------|---|

1 Condition 4c Presentation Slides



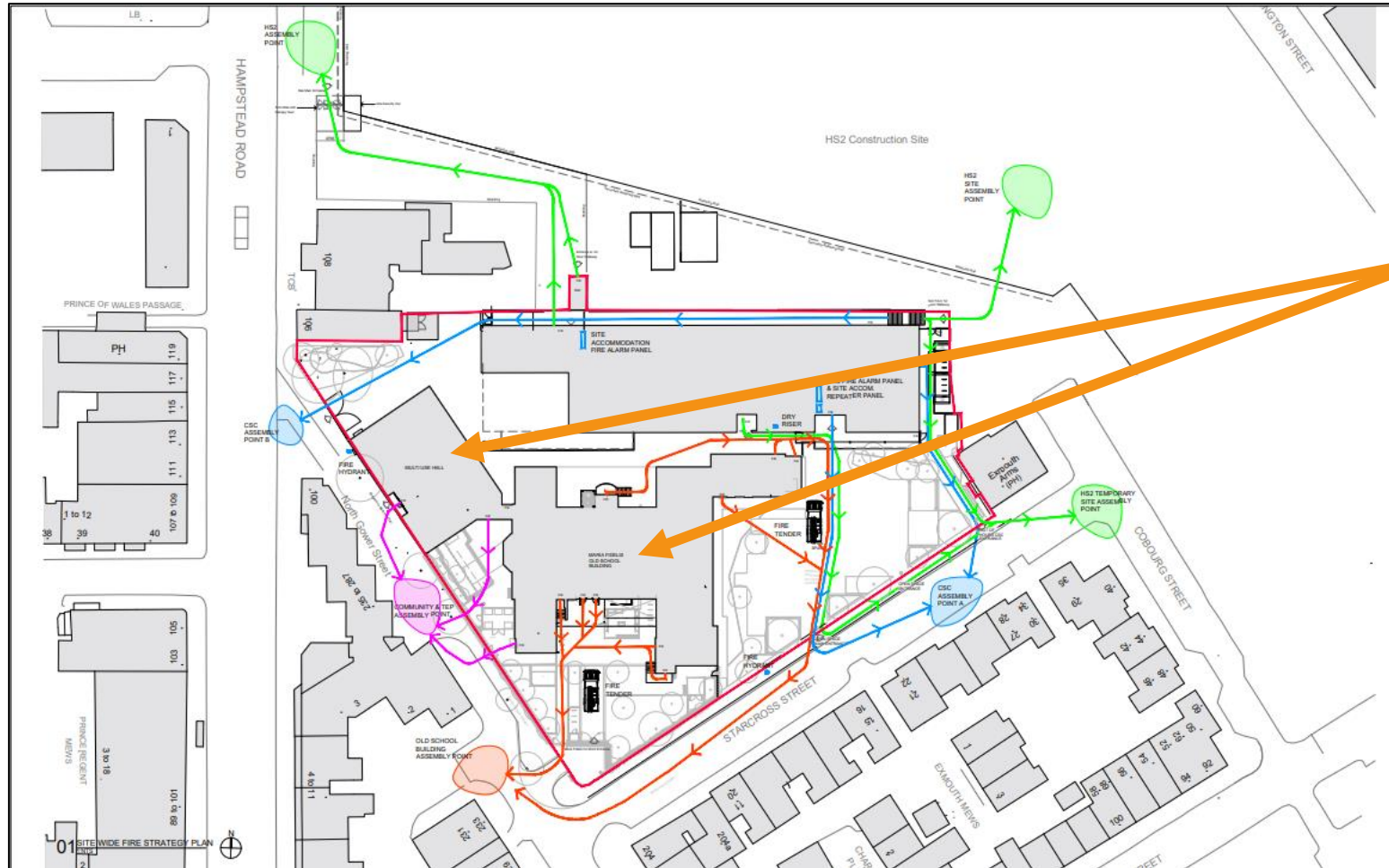
Working in
partnership with

HS2

Condition 4C Discharge Maria Fidelis Old School Access, CCTV & Lighting

Maria Fidelis Old School – TEP Hub & MDjv Offices

Site Plan – Maria Fidelis Complex

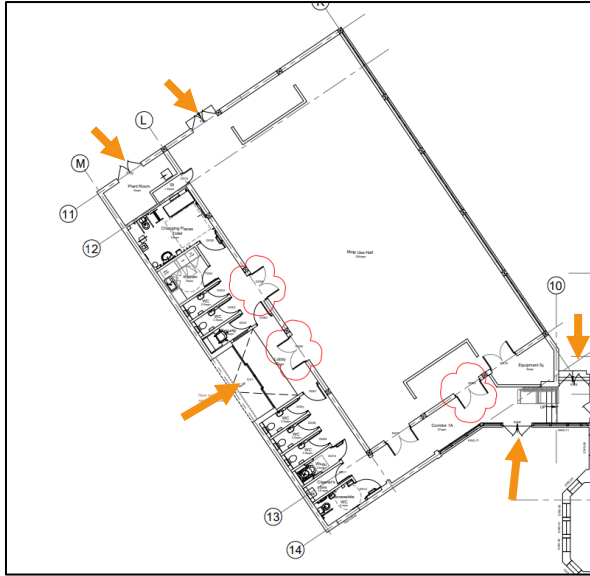


This screenshot is taken from the Fire Strategy Site Wide Plan for the Maria Fidelis Complex (1CP01-MDS_LDE-LS-DPL-SS08_SL23_GF-000009 [C03]).

➤ This clearly shows the Multi Use Hall and the Maria Fidelis Old School Building, which this Condition 4c application relates to.

These two areas are interconnected and make up a joint space to be used by the Euston Partnership (TEP) and the Integrated Project Team (IPT – MDjv)

Access to the Multi Use Hall



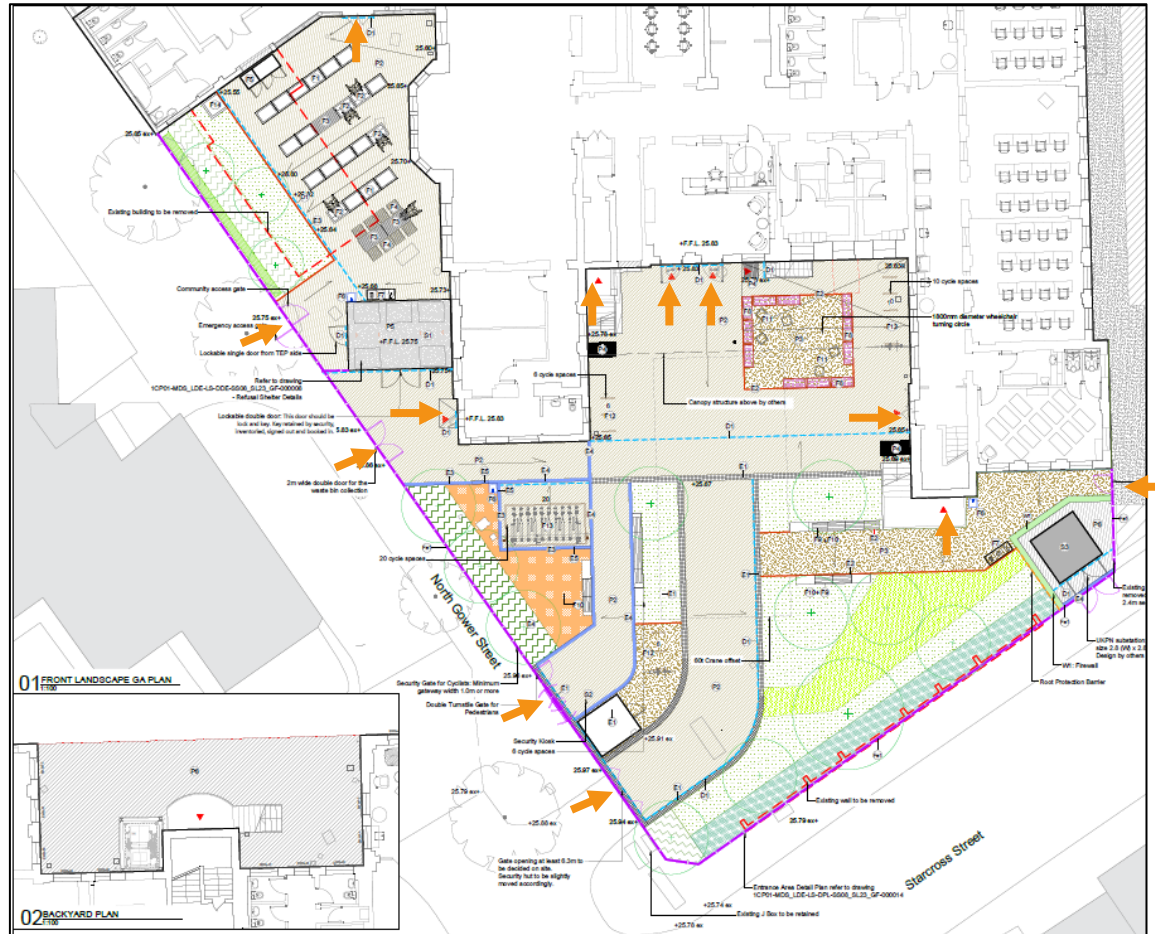
The Multi Use Hall will have an entrance on North Gower Street that will provide access to the TEP areas within the Multi Use Hall and the Ground Floor of the Maria Fidelis Old School Building.

Above left is a screenshot from the Square Dot Ground Floor General Arrangement (1CP01-MDS_SQD-DS-DPL-SS08_SL23_GF-000027[C03]) that shows the Multi Use Hall with its adjoining corridors and external doors.

The main entrance, as stated, is on North Gower Street, which is shown in the above right screenshot from the FBM Community Hall West Elevation (1CP01-MDS_FBM-AR-DEL-SS08_SL23-000018 [C02]).

There are four other sets of external doors that relate to the Multi Use Hall. Two are shown on gridline 11 in the screenshot above left, with both sets of doors opening into the secure Construction Skill Centre area. The other two are shown either side of gridline 10 in the screenshot above left, with the northern external doors opening into a secure Construction Skill Centre area and the southern external doors opening into the secure Maria Fidelis Old School landscape area.

Access to the Maria Fidelis Old School Building



This screenshot is taken from the General Arrangement Plan for the Landscape Design of the Maria Fidelis Old School Building (1CP01-MDS_LDE-LS-DGA-SS08_SL23_GF-000003 [C04]).

This clearly shows the access into the main Maria Fidelis Old School Building and secure landscape area.

The main entrance to the landscape area is as the bottom of the driveways where there is a vehicle gate, pedestrian gate and two turnstile gates that allow access into the Maria Fidelis Old School grounds.

There are also entrances along North Gower Street for waste bin collection community garden access and an emergency access gate.

Finally, there is a side gate that provides access between the Maria Fidelis Old School grounds and the adjacent Camden gardens.

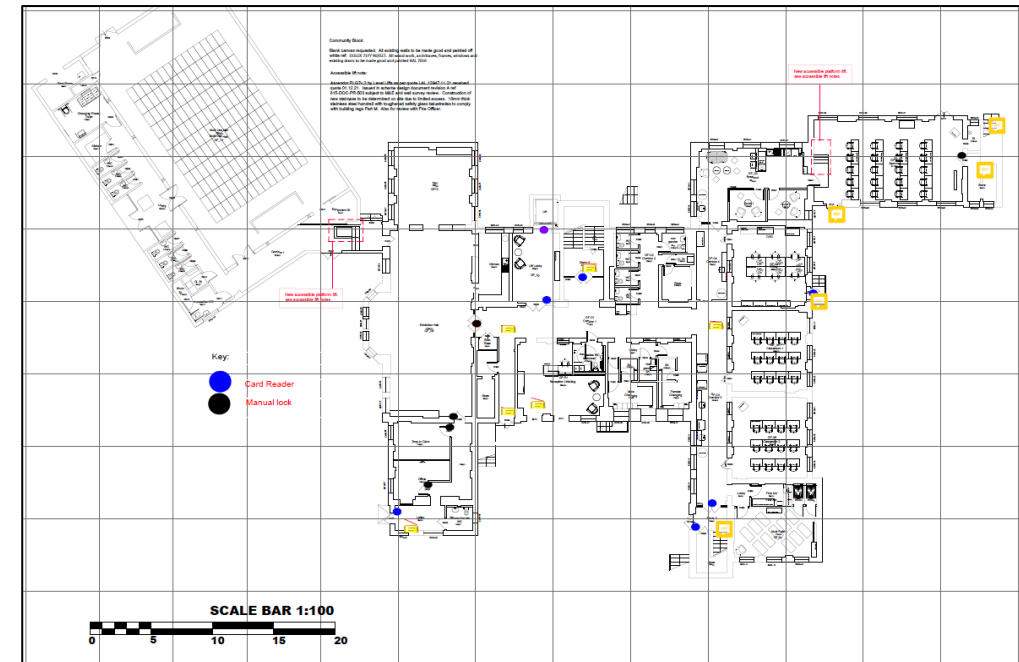
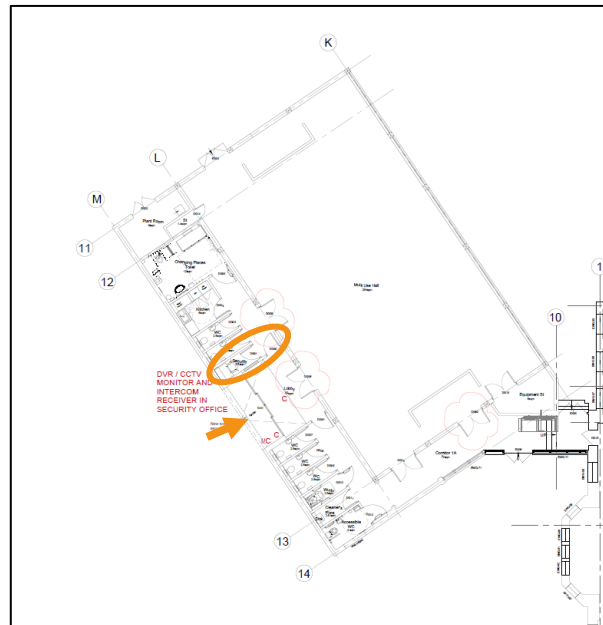
The main entrance to the Maria Fidelis Old School Building is central to the building with two single doors (D-02 & D-08) providing access into the IPT Reception area.

There are several other doors into the Maria Fidelis Old School Building, which all open into the secure landscape area. The only exception is the rear external doors, which open into a secure Construction Skill Centre area.

Access & Security

The Multi Use Hall (TEP Area) will be accessed off North Gower Street with a set of sliding doors installed in the main entrance way. These sliding doors will have access control to allow entry into the Multi Use Hall entrance corridor. There will be a standalone security system within the TEP entrance way, which will consist of; 1 no. Internal camera within reception, 1 no, internal camera within the canopy and an intercom system linked to the security office (circled in orange on the screenshot below left).

The Maria Fidelis Old Building will be accessed through the pedestrian turnstiles (with card readers) on the corner of North Gower Street and Starcross Street. The main entrance to the building will be through the two main doors (with card readers) that lead to the reception of the IPT offices and welfare. Below shows an internal markup of the access control for the IPT offices and welfare with doors highlighted with card readers or manual locks.



CCTV - Slide 1

The external CCTV for the Maria Fidelis Old Building, the surrounding landscape area and the Multi Use Hall Building will utilise the existing CCTV system that has been installed by MDjv that covers the current construction site.

- The cameras are configured for intrusion detection (line crossing) that protects the external secure fence line.
- The cameras also have analytic detection zones configured to detect movement within the zone, covering the garden and entire external façade of the Old School in this area.
- The cameras will not be monitored throughout the day as it is a public space, but the area will be recorded and can be accessed for the detection and prevention of crime or accident investigation through data request process.
- The cameras will be monitored out of hours through our Security Control Room.
- The only caveat is that the Multi Use Hall will have a standalone security system covering the TEP entrance with all DVR and CCTV monitoring local to the security room adjacent to the TEP entrance.

CCTV - Slide 2

The external CCTV for the Maria Fidelis Old School Building and Multi Use Hall will be covered as discussed by the existing CCTV installed by MDjv. This Condition 4c is supported by a letter from the MDjv Senior Security Lead that outlines the existing installation, though of course can't outline exact locations or coverage for security reasons.



SUBJECT: CCTV Covering Maria Fidelis Old School (MFOS), HS2 Euston

For the purpose of clarity, I include consideration, covering, Cobourg Street, Starcross Street, and North Gower Street.

Dear LBC,

There are strict requirements set out by the Surveillance Commissionaire, in that, consideration of the impact should be assessed, to determine the necessity for the Video Surveillance System (VSS) before deploying the cameras, and proportionality. We should also consider our requirement to comply under Construction (design & management) regulations 2015 (CDM); complying with these key areas ensures our system remains lawful.

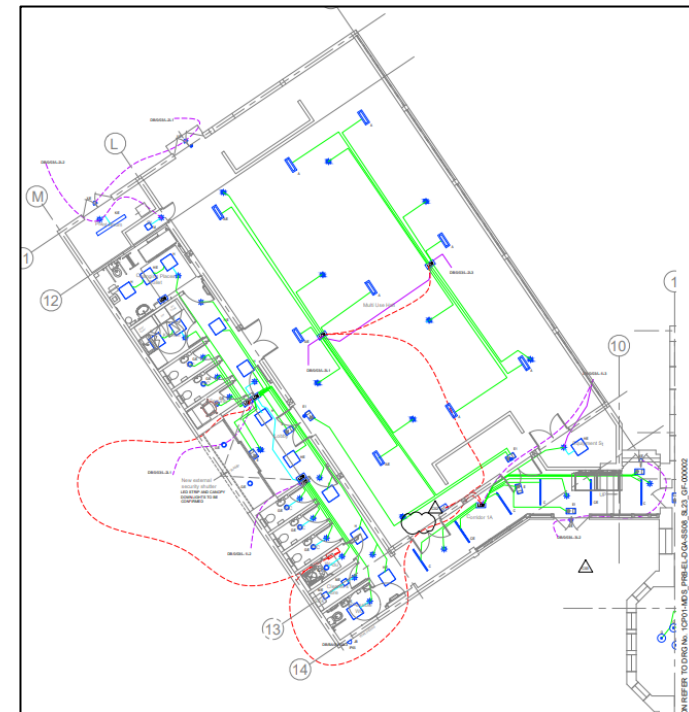
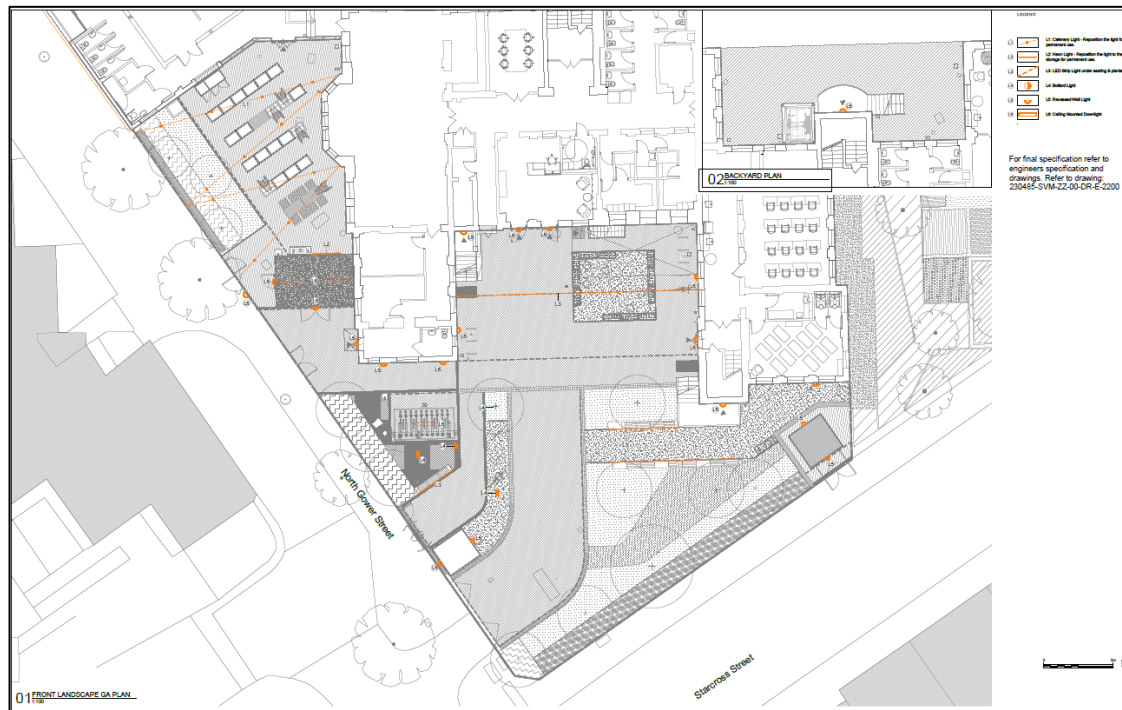
In addition, and in support, the introduction of Section 7 of the Crime and Disorder Act 1998 placed a direct responsibility on local authorities to combat crime and anti-social behaviour. This provides a statutory framework enabling local authorities to consider how their services could contribute to reducing crime and disorder, as well as their impact on social and community factors against that affecting crime levels.

HS2 Euston integrates with the local community and works closely with the local authority, therefore we feel it is incumbent upon MDJV to consider the role we play, and therefore our responsibility within the Act.

Lighting

The external lighting has been coordinated between LDA (landscape designer) and PBS (MEP designer). The landscape lighting will be as per LDA's External Lighting Strategy Plan (1CP01-MDS_LDE-LS-DPL-SS08_SL23_GF-000009 [C05]) with the lighting requirements added to PBS's Ground Floor Lighting Layout Sheets 1 & 2 (1CP01-MDS_PRB-EL-DGA-SS08_SL23_GF-000005 [C03] / 1CP01-MDS_PRB-EL-DGA-SS08_SL23_GF-000002 [C04]) to ensure both the Multi Use Hall and Maria Fidelis Old School buildings have the correct lighting installed as per LDA's requirements.

If you see below, the left screenshot shows the full lighting strategy for the secure landscape area and the Maria Fidelis Old School building, whilst the right screenshot shows the lighting for the Multi Use Hall that is aligned with areas that interface with the secure landscape area.



*It is to be noted that the External Lighting Strategy Plan has been updated to remove tree uplighters in response to comments by London Borough of Camden officers

End

