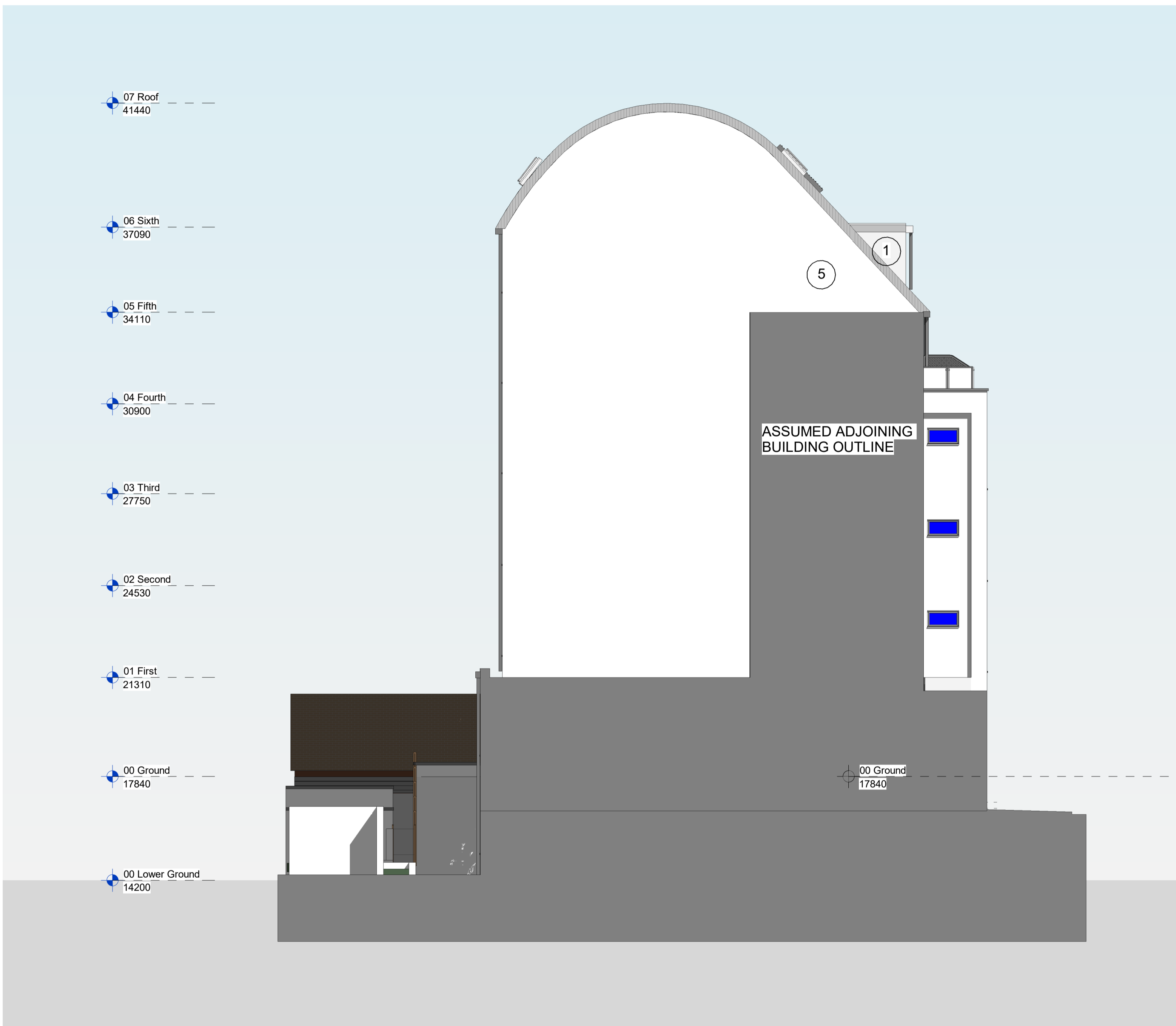
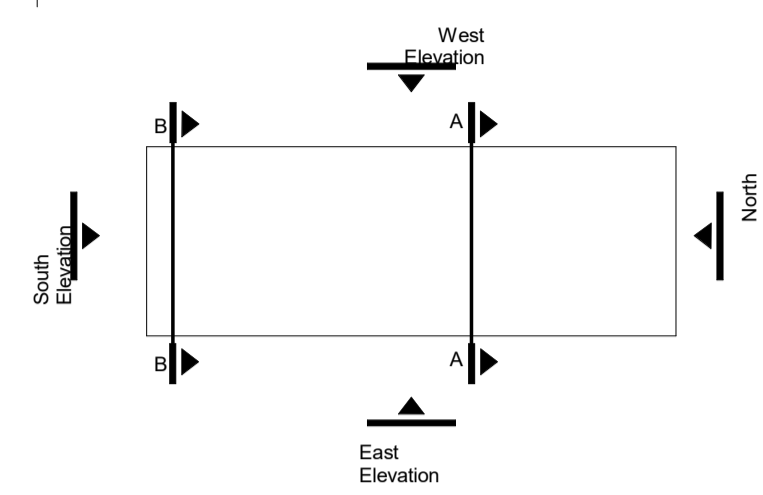


Notes

This drawing is the property of Wilmore Iles Architects.
 Copyright is reserved by Wilmore Iles Architects and the drawing is issued on the condition that it is not copied, reproduced, retained, or disclosed to any unauthorised person, either wholly or in part, without the consent in writing of Wilmore Iles Architects.
 Any discrepancies must be reported to the Architect.



SOUTH ELEVATION
1 : 100

LEGEND

- LIGHT GREY STANDING SEAM (1)
- DARK GREY METAL CLADDING (2)
- TRESPA 50mm ins (3)
- WOOD 50mm ins (4)
- WHITE RENDER 120mm ins (5)
- PINK RENDER 120mm ins (6)
- BROWN BRICKWORK (7)

S1 - Coordination	WIA	SD	15/05/24	P02
S1 - Scale bar added	WA	SD	10/05/24	P01
Amendment	Drwn	Chkd	Date	Re

wia willmore iles architects
 207 Hotwell Road - Hotwells - Bristol - BS8 4SF - Tel: 0117 9450962
 www.willmoreiles.com

Drawing S1
 Client
36 Kirby Street Limited
 WIA No. 1176 Job Title 36-43 Kirby St, London

Drawing Title

EXISTING ELEVATIONS
SOUTH ELEVATION

Scale	Size	Drawn	Checke	Date
1 : 100	A1	WA	SD	27/02/24
Drawing	001176- WIA- XX- XX- EV- A		01303	Rev P02

QMF22 Issue 02 05.03.14

