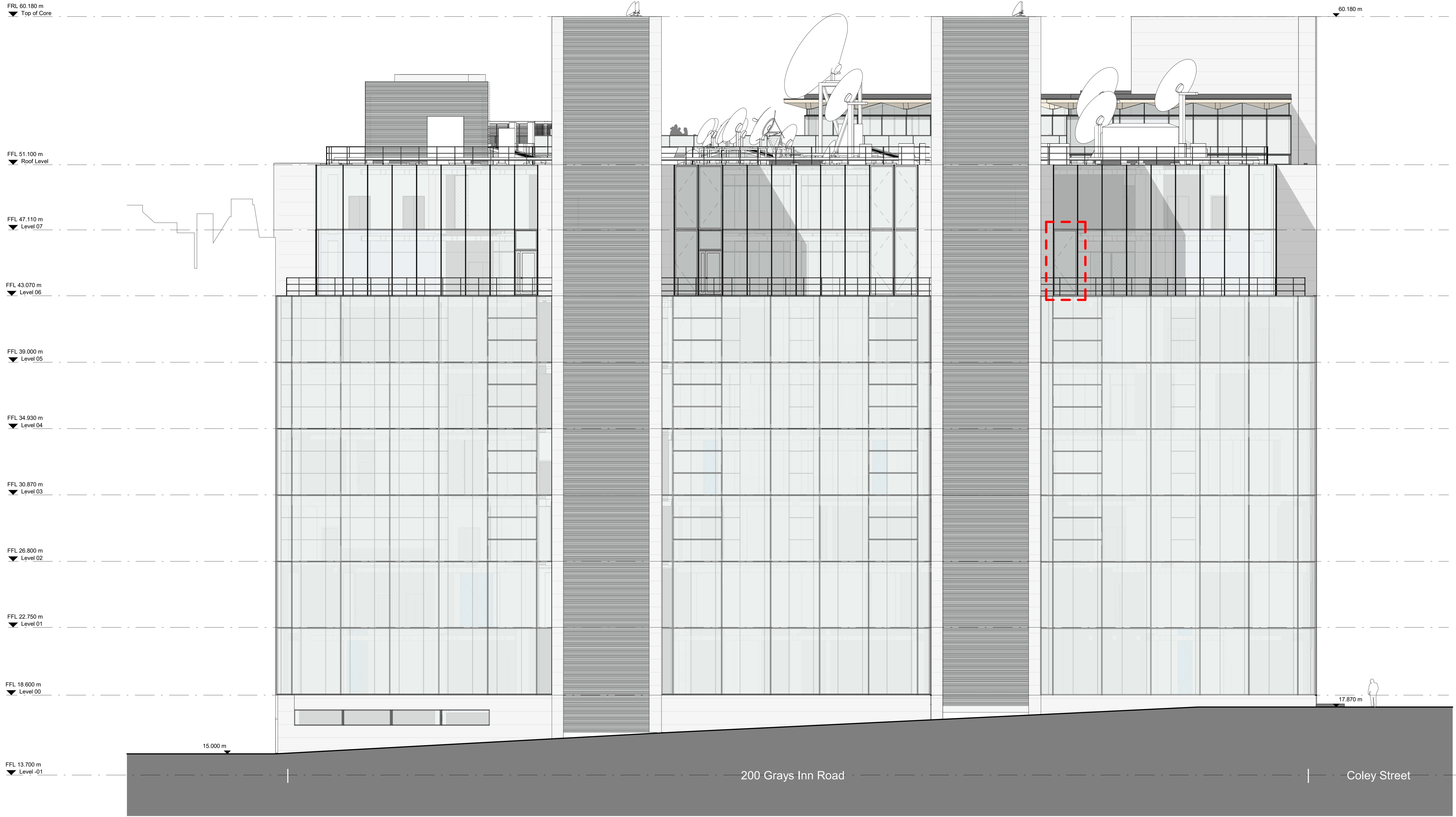
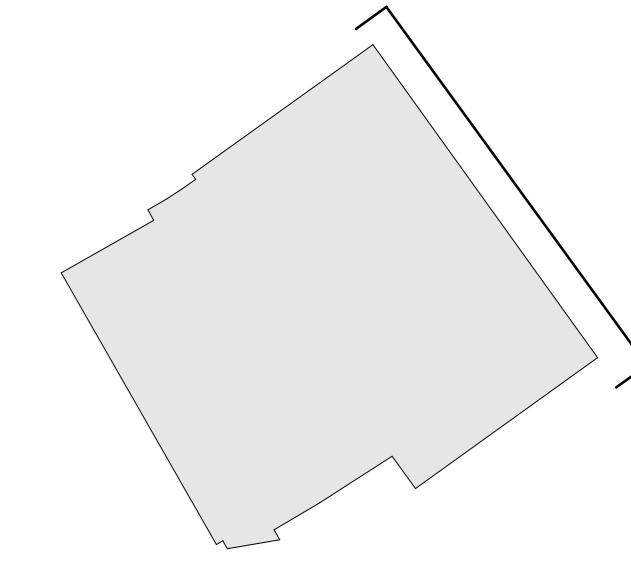


Notes

- For Health & Safety related information please refer to the Rolling Designers Risk Register. Where relevant, elements identified on the register are highlighted within the model and on the drawings with the following sign.
 - DO NOT SCALE FROM DRAWING.
 - Drawings to be printed in colour.
 - All information contained in this drawing (including digital data) should be checked and verified prior to any fabrication or construction. Any inconsistencies or omissions should be reported to Bennetts Associates.
 - Unless otherwise stated, all grids or co-ordinates are based on the Ordnance Survey National Grid or GPS Coordinates.
 - Unless otherwise stated, all epi heights and levels are expressed as AOD (or 'above ordnance datum' based on the Ordnance Survey ODN (Ordnance Datum Newlyn)).
- Bennetts Associates Architects make no warranties, express or implied, with respect to the issue of the data provided herewith, regardless of its format or the source of its transmission.
- All existing survey data is based on, or reference from, 3rd Party information. Unless otherwise stated, all structural, mechanical, electrical information is based on, or reference from, 3rd Party data.
- © Crown Copyright 2021. All Rights Reserved.
Ordnance Survey License 122456



1 Existing-East -Gough St
1 : 100



BENNETTS ASSOCIATES

1 Rawstorne Place, London EC1V 7NL
T +44(0)207 5203300 • www.bennettsassociates.com
E mail@bennettsassociates.com
For Bennetts Associates' electronic information issue disclaimer -
www.bennettsassociates.com/informationaldisclaimer/

Project Project No. GIR
200 Gray's Inn Road
GPE
Drawing Title
Existing Elevation
Gough Street
East

Drawing Number:
GIR-BA-14-EE1-DP-A-1
Revision/Suitability
P1 S4
Scale @ A2 Scale @ A0 Revision Date
As Indicated 241031
YYMM DD