

© BOWKER SADLER PARTNERSHIP LIMITED
 THIS DRAWING IS THE SUBJECT OF COPYRIGHT WHICH VESTS IN BOWKER SADLER PARTNERSHIP LIMITED. IT IS AN INSTRUMENT OF COPYRIGHT TO REPRODUCE THIS DRAWING, BY WHATEVER MEANS, INCLUDING ELECTRONIC, WITHOUT THE EXPRESS WRITTEN CONSENT OF BOWKER SADLER PARTNERSHIP LIMITED WHICH RESERVES ALL ITS RIGHTS.
 BOWKER SADLER PARTNERSHIP LIMITED ASSURES ITS RIGHTS TO BE IDENTIFIED AS THE AUTHOR OF THIS DESIGN.
 ■ REPORT ERRORS & OMISSIONS TO ARCHITECT.
 ■ CHECK ALL DIMENSIONS ON SITE.
 ■ DRAWING TO BE READ IN CONJUNCTION WITH THE HEALTH AND SAFETY PLAN AND ALL RELEVANT RISK ASSESSMENTS.

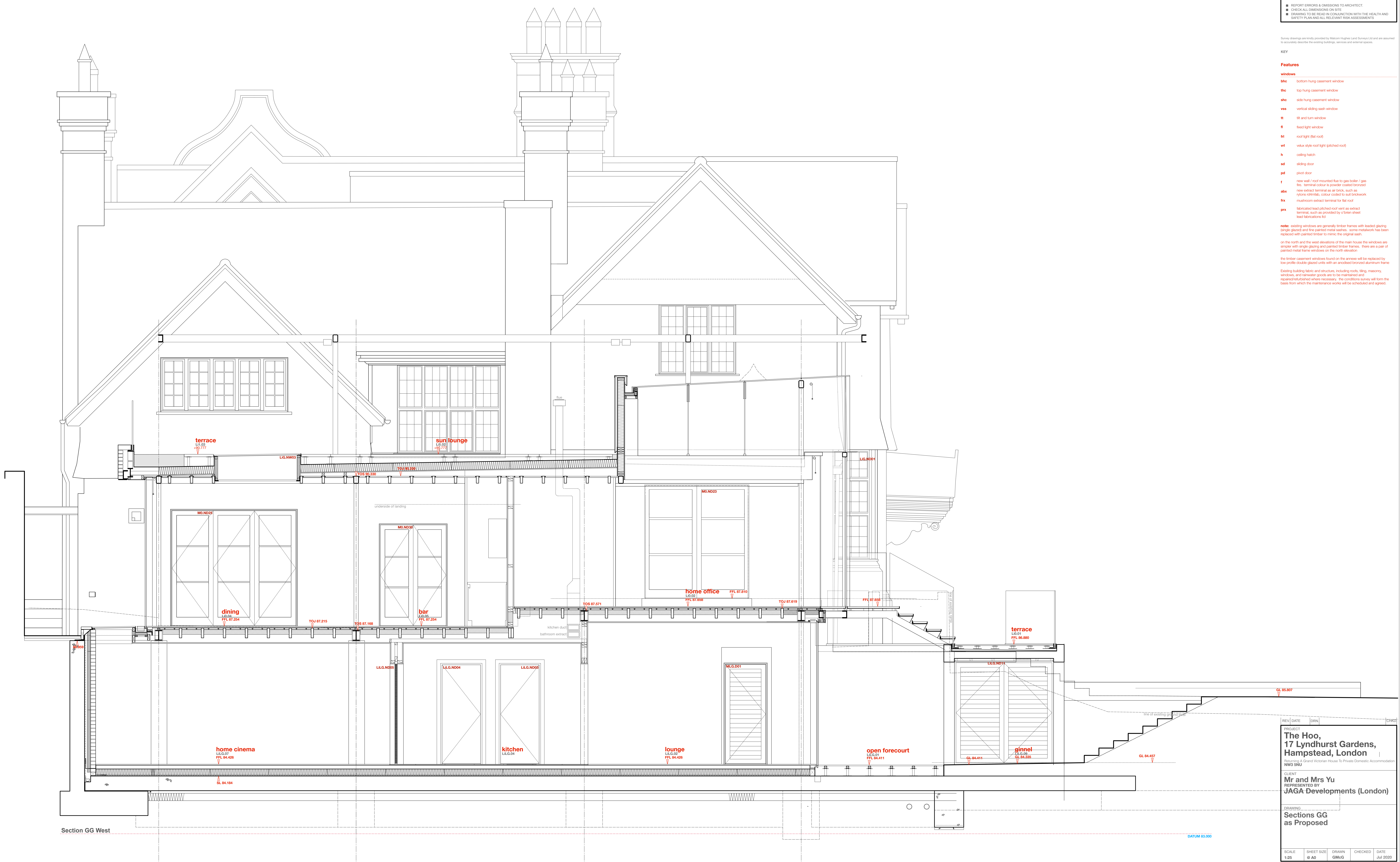
Survey drawings are kindly provided by Mutton Hughes Land Surveys Ltd and are assumed to accurately describe the existing buildings, services and external spaces.

KEY

Features

- windows**
- bhc bottom hung casement window
 - thc top hung casement window
 - shc side hung casement window
 - vss vertical sliding sash window
 - tt tt and turn window
 - fl fixed light window
 - fl roof light (flat roof)
 - vfl velux style roof light (gabled roof)
 - h ceiling hatch
 - sd sliding door
 - pd pivot door
 - f new wall / roof mounted flue to gas boiler / gas fire, terminal colour as powder coated bronze
 - abx new extract terminal as air brick, such as rylene external, colour coded to suit brickwork
 - fx mushroom extract terminal for flat roof
 - prx fabricated lead pitched roof vent as extract terminal, such as provided by o'thman sheet lead flashings kit

note: existing windows are generally timber frames with beaded glazing (single glazed) and fire painted metal sashes. some metalwork has been replaced with painted timber to mimic the original sash.
 on the north and the west elevations of the main house the windows are simpler with single glazing and paired timber frames. there are a pair of painted metal frame windows on the north elevation.
 the timber casement windows found on the arrows will be replaced by low profile double glazed units with an exposed bronze aluminium frame.
 Existing building fabric and structure, including roofs, tiling, masonry, windows, and rainwater goods are to be maintained and repaired/retained where necessary. the conditions survey will form the basis from which the maintenance works will be scheduled and agreed.



Section GG West

DATUM 83.000

REV	DATE	DRN	CHKD

PROJECT
The Hoo,
 17 Lyndhurst Gardens,
 Hampstead, London
 Referring a Grand Victorian House to Private Domestic Accommodation
 NW3 5NU

CLIENT
Mr and Mrs Yu
 REPRESENTED BY
JAGA Developments (London)

DRAWING
Sections GG
 as Proposed

SCALE	SHEET SIZE	DRAWN	CHECKED	DATE
1:25	A0	GM:G		Jul 2020

BOWKER SADLER ARCHITECTURE
 A: Hatherlow House, Hatherlow, Romley, Stockport SK9 3DY
 T: 0161 408 7333
 E: info@bowker-sadler.co.uk
 W: www.bowker-sadler.co.uk

JOB No	DRAWING No	REVISION
19013	3607	C

STATUS
 FOR PLANNING