

© BOWKER SADLER PARTNERSHIP LIMITED  
 THIS DRAWING IS THE SUBJECT OF COPYRIGHT WHICH VESTS IN BOWKER SADLER PARTNERSHIP LIMITED. IT IS AN INFREQUENT OF COPYRIGHT TO REPRODUCE THIS DRAWING, BY WHATEVER MEANS, INCLUDING ELECTRONIC, WITHOUT THE EXPRESS WRITTEN CONSENT OF BOWKER SADLER PARTNERSHIP LIMITED WHICH RESERVES ALL ITS RIGHTS.  
 BOWKER SADLER PARTNERSHIP LIMITED ASSERTS ITS RIGHTS TO BE IDENTIFIED AS THE AUTHOR OF THIS DESIGN.  
 ■ REPORT ERRORS & OMISSIONS TO ARCHITECT.  
 ■ CHECK ALL DIMENSIONS ON SITE.  
 ■ DRAWING TO BE READ IN CONJUNCTION WITH THE HEALTH AND SAFETY PLAN AND ALL RELEVANT RISK ASSESSMENTS.

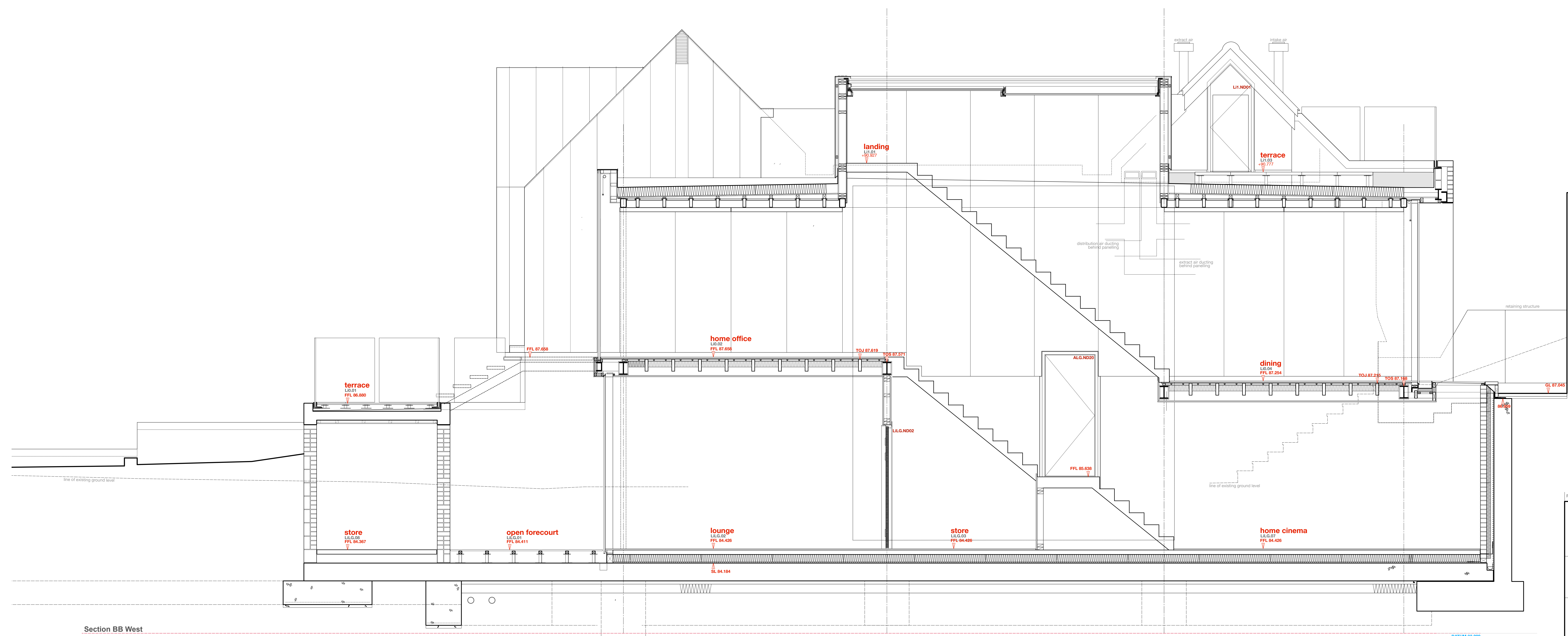
Survey drawings are kindly provided by Mutton Hughes Land Surveys Ltd and are assumed to accurately describe the existing buildings, services and external spaces.

KEY

Features

- windows**
- bhc bottom hung casement window
  - thc top hung casement window
  - shc side hung casement window
  - vs vertical sliding sash window
  - tt tt and turn window
  - f fixed light window
  - fl roof light (flat roof)
  - vl valux style roof light (gabled roof)
  - h ceiling hatch
  - sd sliding door
  - pd pivot door
  - r new wall / roof mounted flue to gas boiler / gas fire, terminal colour as powder coated bronze
  - abx new extract terminal as air brick, such as rylene external, colour coded to suit brickwork
  - fx mushroom extract terminal for fat roof
  - prx fabricated lead pitched roof vent as extract terminal, such as provided by o'brien sheet lead transoms kit

**note:** existing windows are generally timber frames with beaded glazing (single glazed) and fine painted metal sashes. some metalwork has been replaced with painted timber to mimic the original sash.  
 on the north and the west elevations of the main house the windows are simpler with single glazing and paired timber frames. there are a pair of painted metal frame windows on the north elevation.  
 the timber casement windows found on the arrows will be replaced by low profile double glazed units with an exposed bronze aluminium frame.  
 Existing building fabric and structure, including roofs, tiling, masonry, windows, and plasterwork goods are to be maintained and repaired/reinstated where necessary. the conditions survey will form the basis from which the maintenance works will be scheduled and agreed.



REV	DATE	DRN	CHKD
<b>PROJECT</b> <b>The Hoo,</b> <b>17 Lyndhurst Gardens,</b> <b>Hampstead, London</b> Returning a Grand Victorian House to Private Domestic Accommodation NW3 5NU			
<b>CLIENT</b> <b>Mr and Mrs Yu</b> REPRESENTED BY <b>JAGA Developments (London)</b>			
<b>DRAWING</b> <b>Section EE</b> <b>as Proposed</b>			
SCALE	SHEET SIZE	DRAWN	CHECKED
1:25	A0	GM:G	
DATE		Oct 2019	

**BOWKER SADLER ARCHITECTURE**  
 A: Hatherlow House, Hatherlow, Romley, Stockport SK9 3DY  
 T: 0161 408 7333  
 E: info@bowker-sadler.co.uk  
 W: www.bowker-sadler.co.uk

JOB No	DRAWING No	REVISION
<b>19013</b>	<b>3605</b>	<b>C</b>
STATUS		
WORK IN PROGRESS FOR PLANNING		