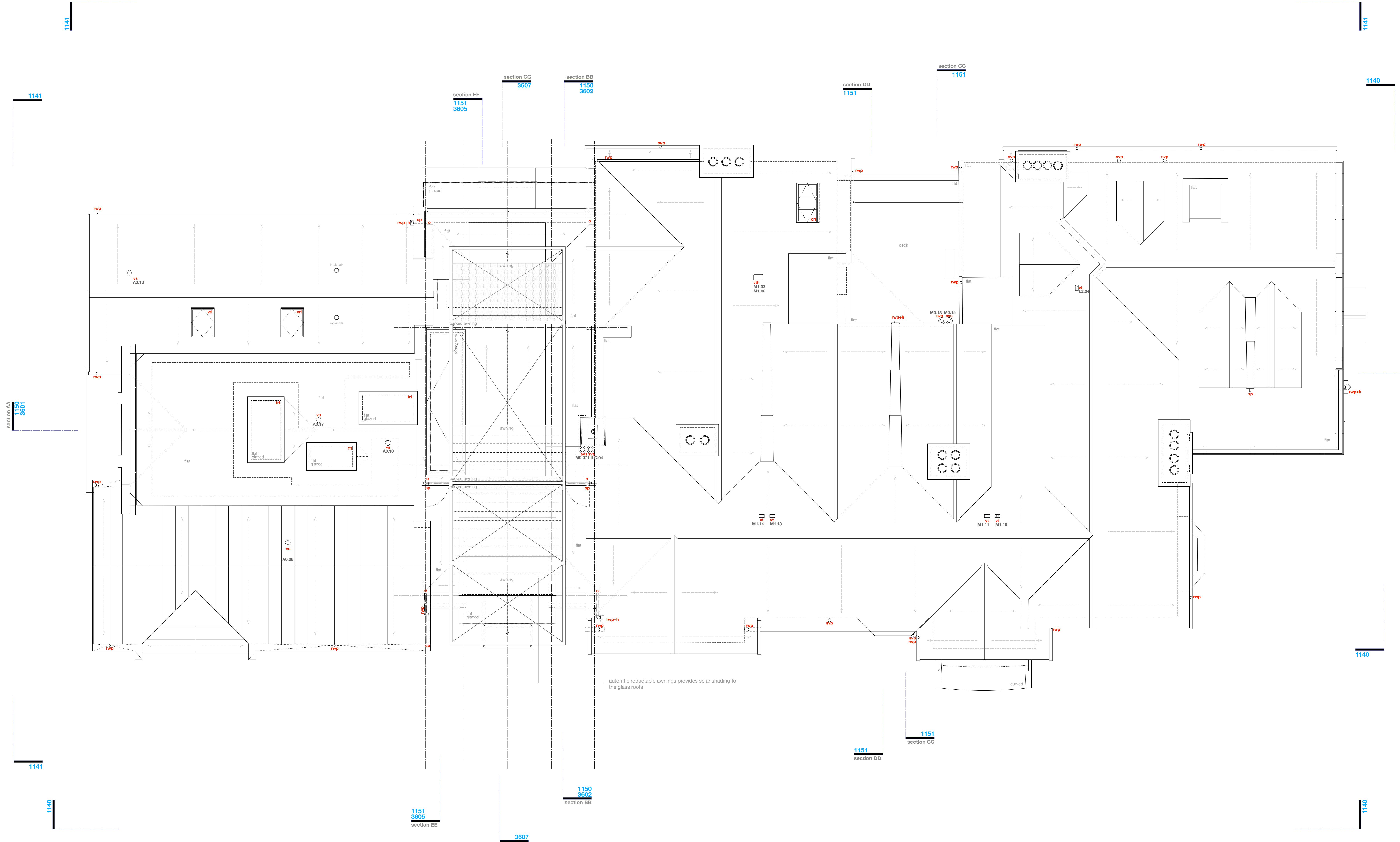


© BOWKER SADLER PARTNERSHIP LIMITED  
 THIS DRAWING IS THE SUBJECT OF COPYRIGHT WHICH VESTS IN BOWKER SADLER PARTNERSHIP LIMITED. IT IS AN INSTRUMENT OF COPYRIGHT TO REPRODUCE THIS DRAWING, BY WHATEVER MEANS, INCLUDING ELECTRONIC, WITHOUT THE EXPRESS WRITTEN CONSENT OF BOWKER SADLER PARTNERSHIP LIMITED WHICH RESERVES ALL ITS RIGHTS.  
 BOWKER SADLER PARTNERSHIP LIMITED ASSERTS ITS RIGHTS TO BE IDENTIFIED AS THE AUTHOR OF THIS DESIGN.  
 ■ REPORT ERRORS & OMISSIONS TO ARCHITECT.  
 ■ CHECK ALL DIMENSIONS ON SITE.  
 ■ DRAWING TO BE READ IN CONJUNCTION WITH THE HEALTH AND SAFETY PLAN AND ALL RELEVANT RISK ASSESSMENTS.

Survey drawings are kindly provided by Mutton Hughes Land Surveys Ltd and are assumed to accurately describe the existing buildings, services and external spaces.

**KEY**  
 Existing Walls  
 New walls to be inserted

- Features**
- windows**  
 bhc bottom hung timber casement window  
 thc top hung timber casement window  
 shc side hung casement  
 vsh vertical sliding sash timber window  
 fl fixed light timber window  
 fl roof light (flat roof)  
 vrl velux style roof light (gabled roof)  
 csl conservation style roof light (gabled roof)  
 h ceiling hatch  
 fh floor hatch  
 sd sliding door  
 sld sliding folding door
- ventilation and flues**  
 f wall / roof mounted flue to gas boiler / gas fire, terracotta colour or black  
 ab1 air brick wall terminal as extract to bathrooms, kitchens etc, arched only, standard WLB weather bunn, various sizes, in powder coated aluminium, colour to suit brikwork  
 ab2 air brick wall terminal as extract to bathrooms, kitchens etc, main house and lodge, 225x225mm (bosphate hi and miss vent with vertical slots in powder coated aluminium, colour to black as ab2, with flyscreen removed for greater ventilation rate  
 ab3 re-use existing terracotta airbrick  
 vt low profile ventilated roof tile, colour and size matched to existing  
 vth hooded ventilated roof tile, colour and size matched to existing  
 vs ventilation stack, black  
 vss ventilation stack, polished stainless steel
- drainage services and landscape**  
 mh Existing manhole  
 ic Existing inspection chamber  
 wic Existing water service inspection chamber  
 FWIC 01 inspection chamber collecting foul water drainage  
 swp Soil vent pipe and underground foul water drainage  
 w Waste pipe from washbasin/shower to foul water drainage  
 rwp Rainwater pipe, gully and underground surface water drainage  
 rwp-h Rainwater hopper draining into rainwater hopper  
 sp Rainwater spout  
 o Rainwater outlet
- mechanical; heating**  
 gas fired boiler and wall mounted flue  
 unvented cylinder



- REV F 09 Mar 2022 GMLG  
 The previously approved scheme (scheme 2) is altered to include a number of minor, non-material amendments. The amendments included mostly rationalise the alterations at Rev E.  
 REV E 06 Sep 2021 GMLG  
 The previously approved scheme (scheme 2) is altered to include a number of small amendments.  
 REV D none  
 REV C 06 Oct 2020 GMLG  
 Gridlines re-adjusted to agree with adjustments to the structure on lower floors. Rooflights above annex are amended to incorporate off-the-shelf sizes available.  
 REV B 10 Aug 2020 GMLG  
 Proposed Planning Application marked at Revision B.  
 REV A 05 Dec 2019 GMLG  
 Original Planning Application marked at Revision A.

REV	DATE	DRN	CHKD

PROJECT  
**The Hoo, Scheme 3**  
**17 Lyndhurst Gardens,**  
**Hampstead, London**  
 Returning a Grand Victorian House to Private Domestic Accommodation NW3 SNU

CLIENT  
**Mr and Mrs Yu**  
 REPRESENTED BY  
**JAGA Developments (London)**

DRAWING  
**Roof Layout**  
 as Proposed

SCALE	SHEET SIZE	DRAWN	CHECKED	DATE
1:50	A0	GMLG	GMLG	May 2020

**BOWKER SADLER ARCHITECTURE**  
 A: Hatherlow House, Hatherlow, Romley, Stockport SK9 3DY  
 T: 0161 408 7333  
 E: info@bowker-sadler.co.uk  
 W: www.bowker-sadler.co.uk

JOB No	DRAWING No	REVISION
19013	1124	F

STATUS  
 PLANNING