

BOWLES & WYER

The Hoo

MMA Application Landscape

Planning Report_Rev A

PREPARED FOR
Jaga Developments

PROJECT
2658

DATE
24.09.24

CONTENTS...

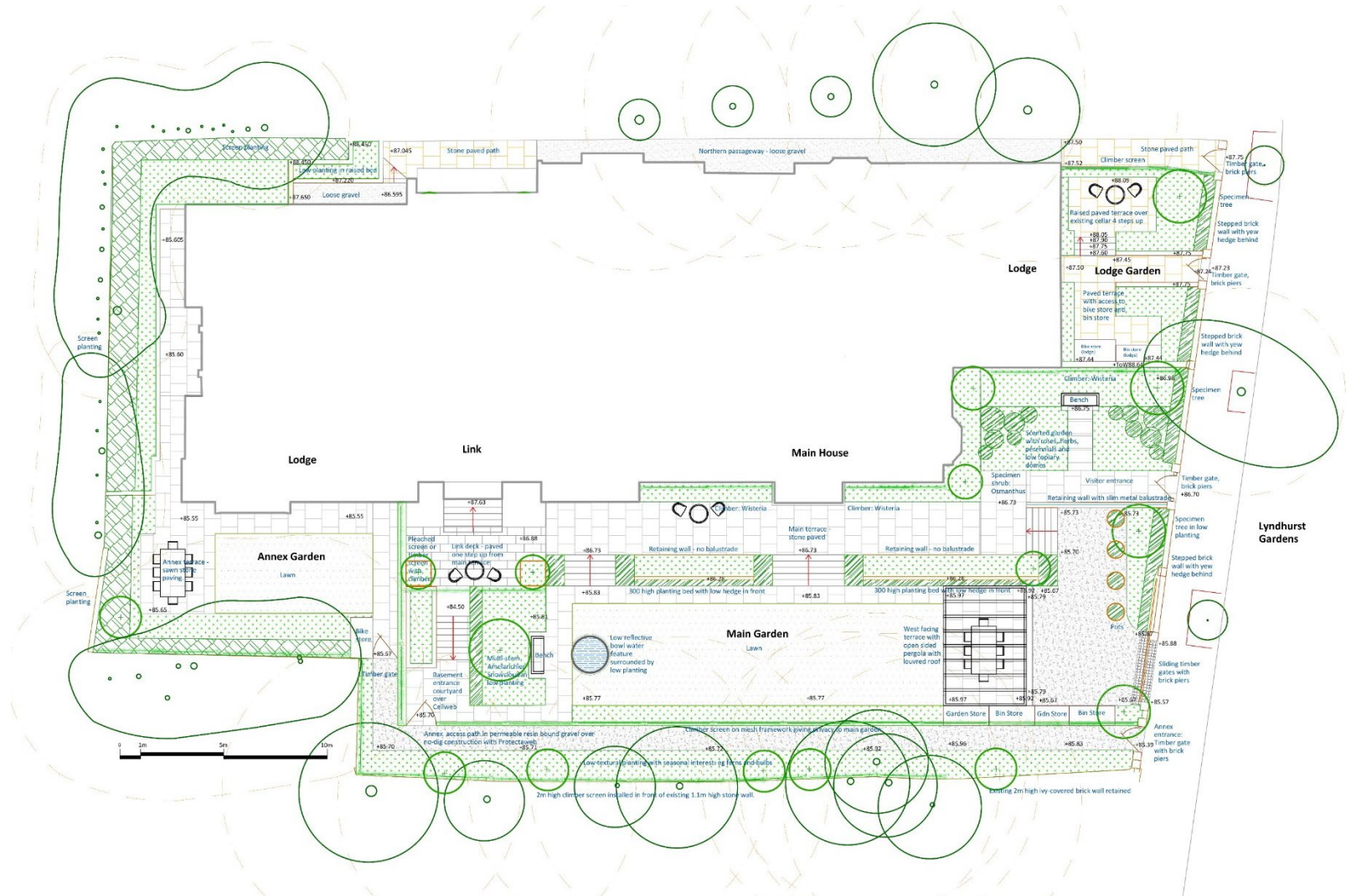
- 1. Consented scheme**
- 2. Consented tree removal**
- 3. Proposed changes to consented scheme**
 - i. Lodge Garden
 - ii. Main terrace/Lawn
 - iii. Back of house



2.0 Consented scheme

The adjacent scheme was granted permission in September 2021 subject to conditions stated in decision letter 2019/6151/P.

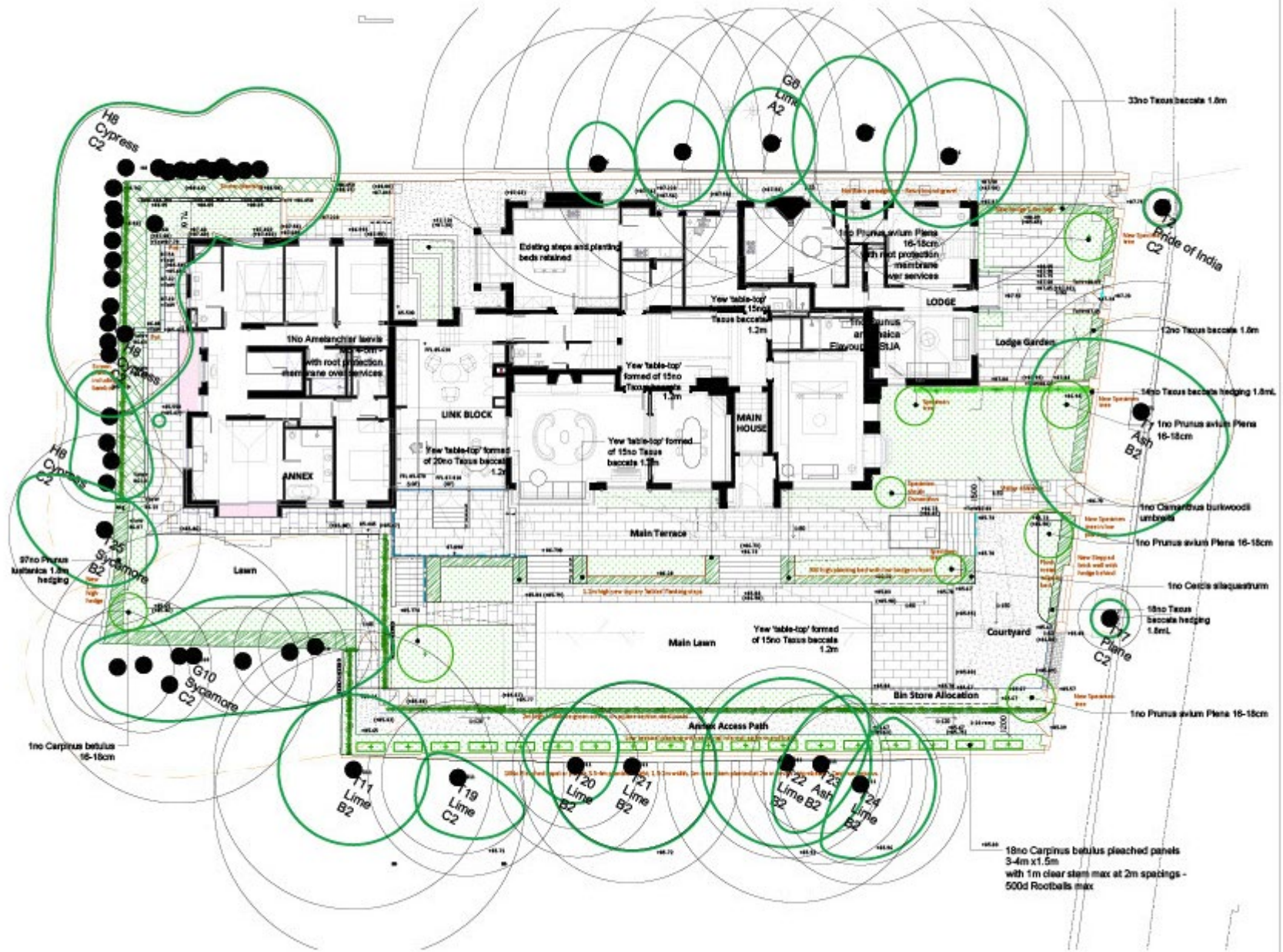
The design uses recurring early 20th century elements including strong geometry, changes of level, long borders, topiary, trelliswork and pergolas, in a contemporary and elegant way to provide a complementary setting to the house. Where the house is complex, detailed and ranging, the new garden design uses strong lines, textures and forms to create a counterbalance of openness and simplicity.



3.0 Proposed adjustments

The revised proposals aim to retain, or increase where possible, the soft landscaping against the consented scheme 2019/6151/P.

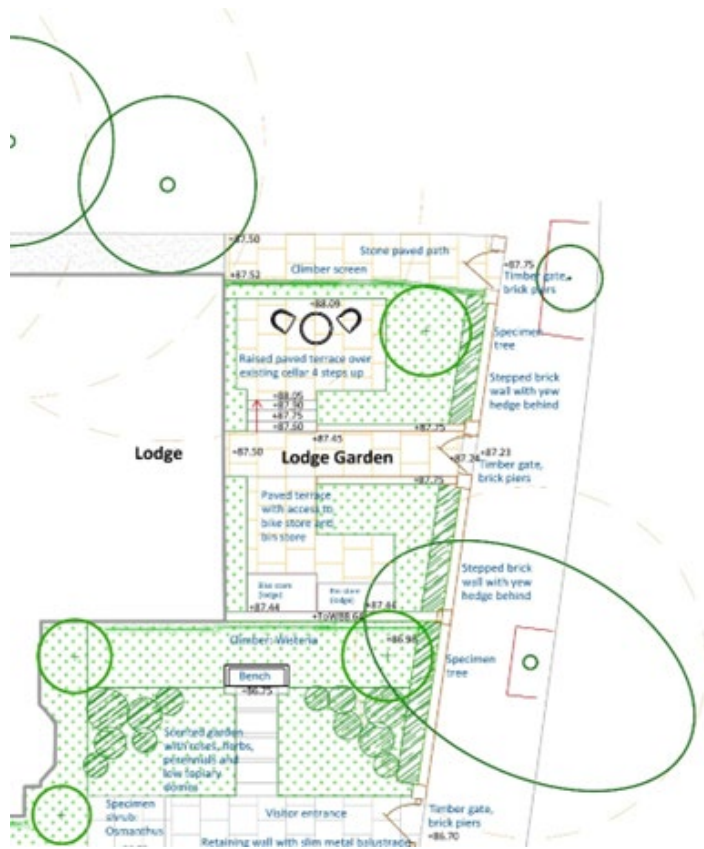
The bulk of the adjustments are a reaction to the change in building outline. The changes do not result in any further loss of existing trees with further tree planting proposed for the southern boundary. We feel the proposals maintain a high-quality landscape which contributes to the visual amenity of the area.



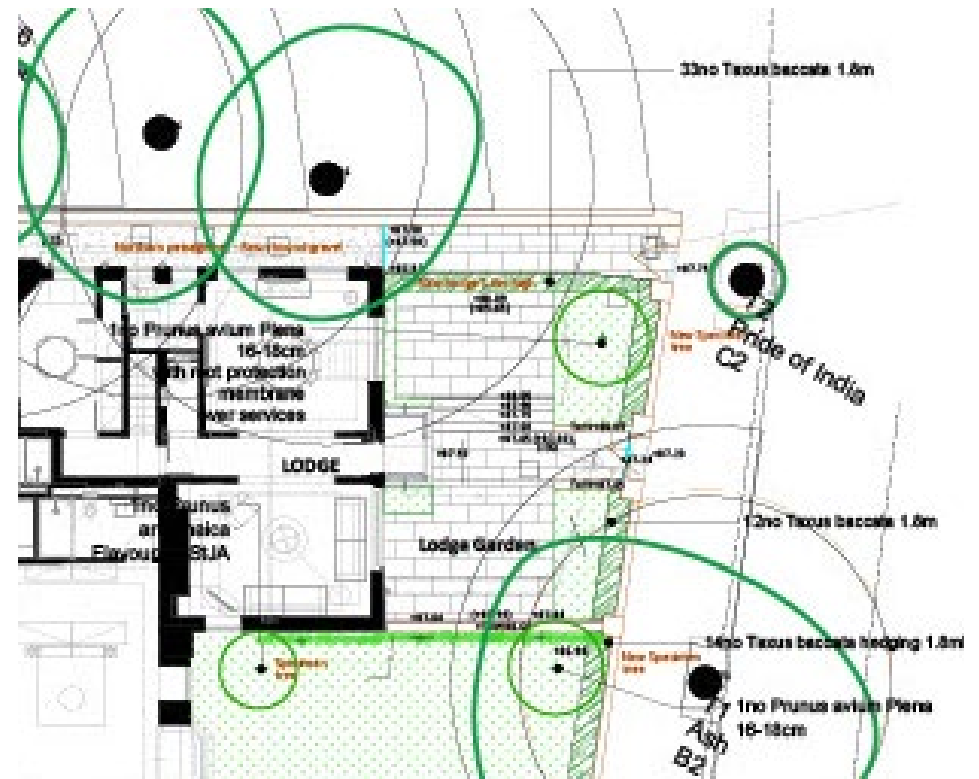
4.1 Lodge garden

Minor adjustments made to accommodate the building outline change. Paving arrangement within the Lodge Garden has been adjustment to suit with an overall increase in soft landscaping.

Consented scheme



Proposed changes



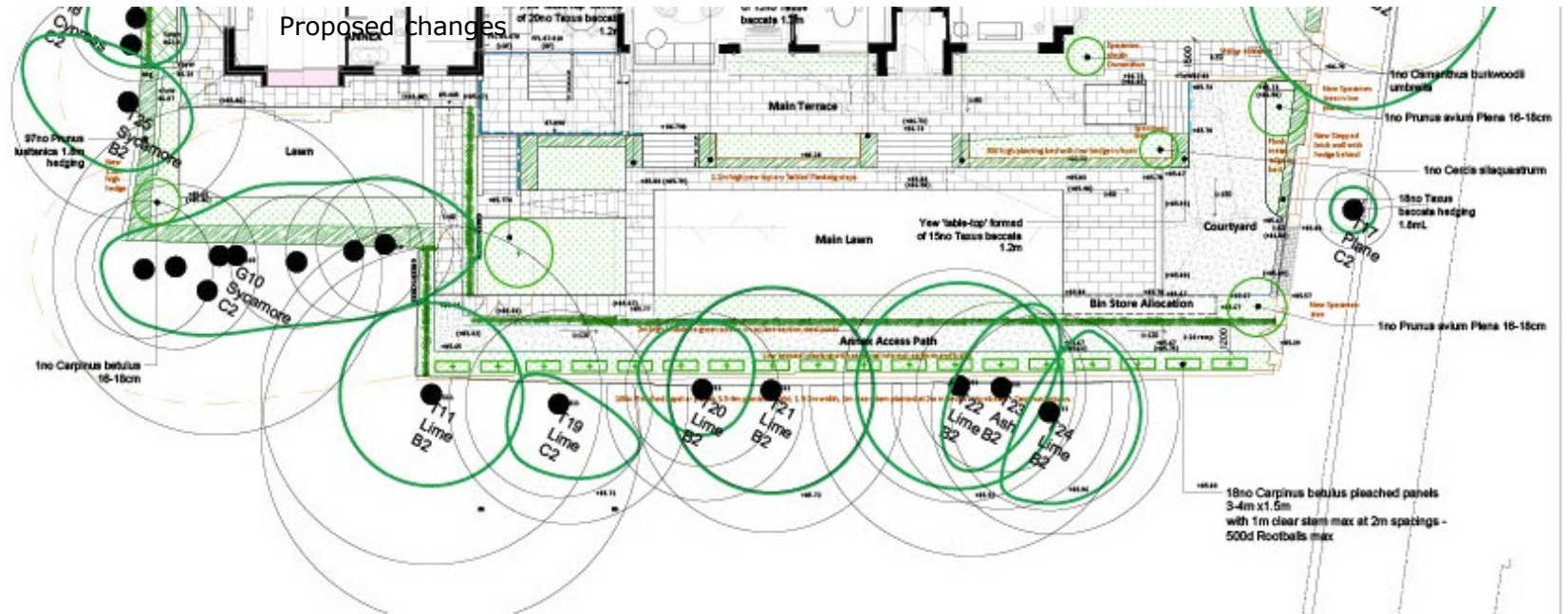
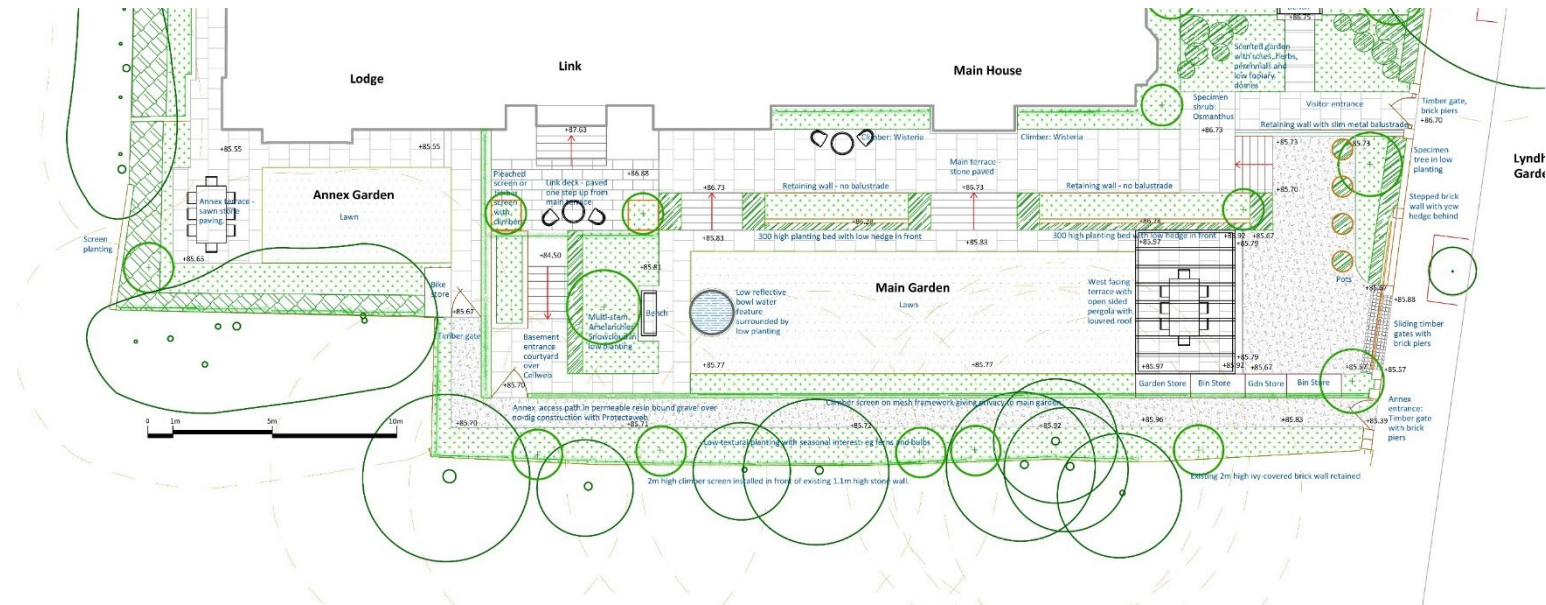
Consented scheme

4.2 Main terrace/lawn

Paved area removed and replaced with a longer lawn, increasing the soft landscape in this area.

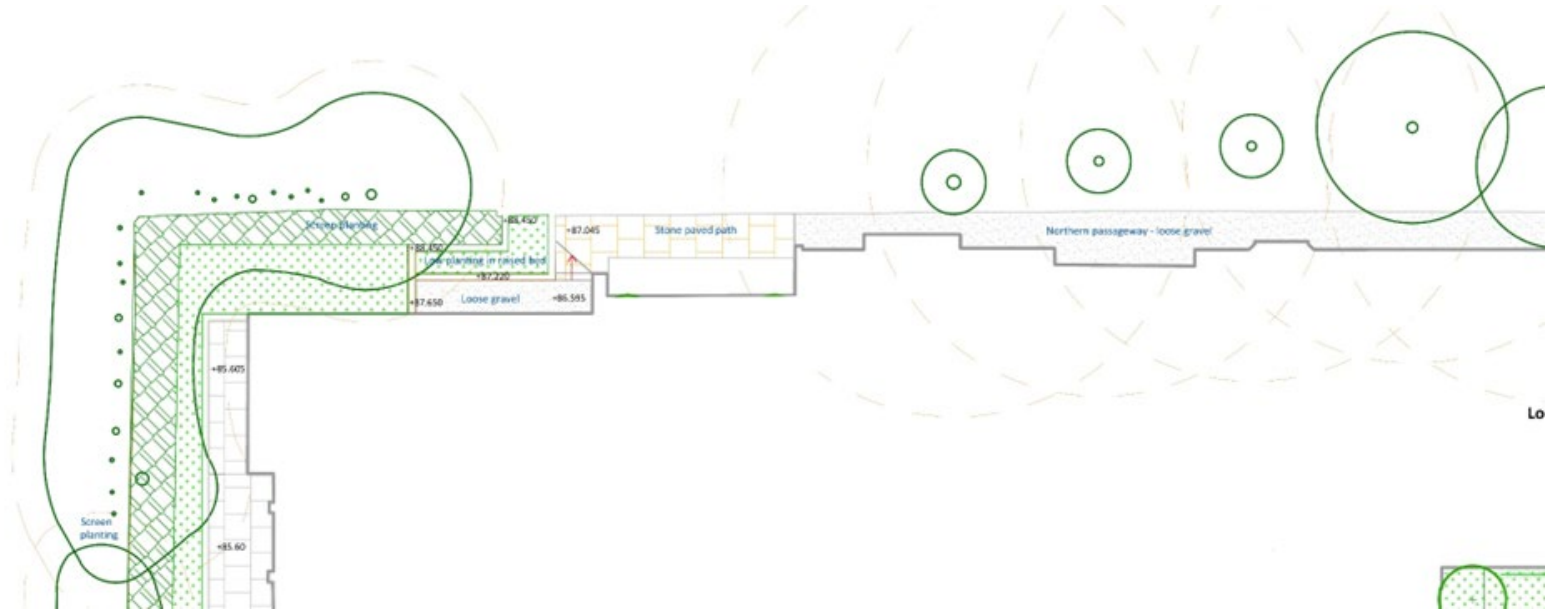
Adjustment made to accommodate access to the lower ground floor Annex. Overall increase in soft landscaping in the area.

Proposed pleached trees introduced to southern boundary to increase the overall proposed tree planting compared to the consented scheme.

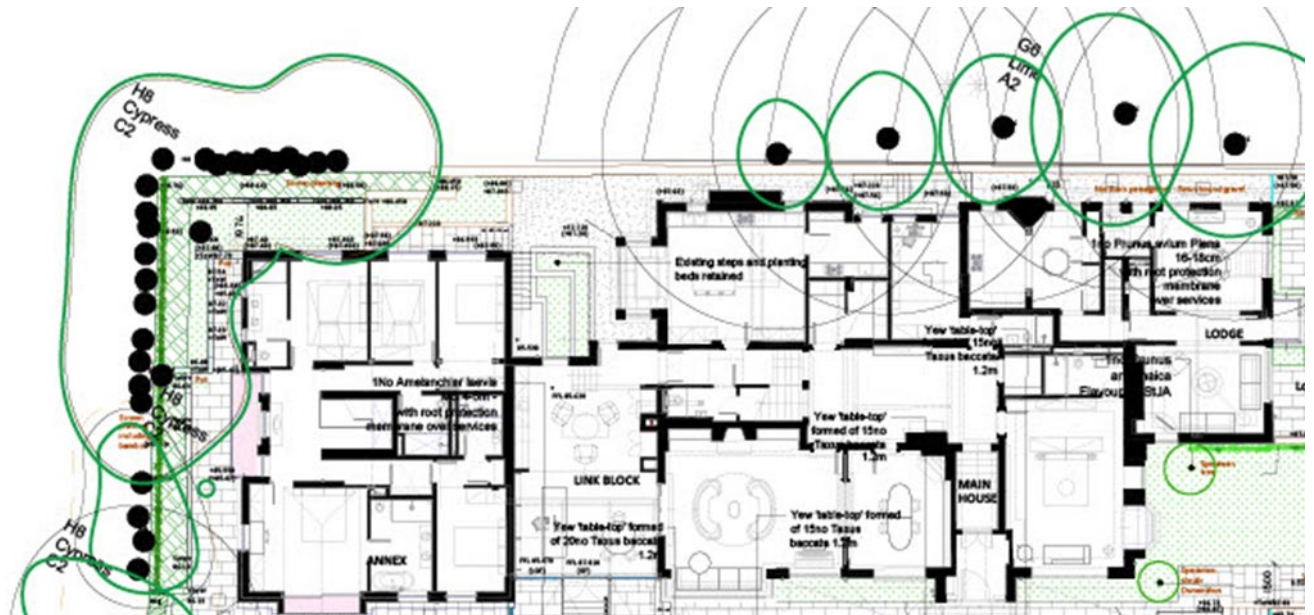


4.3 Back of house

Retention of existing staircase and tiered planting bed and minor adjustment associated with change in building outline.



Proposed changes



An aerial photograph of a terraced landscape, likely a rice paddy field, with a winding road and a small building. The terrain is characterized by numerous curved, parallel terraces that create a rhythmic pattern across the scene. A narrow road winds through the terraces, and a small, dark building is visible in the lower right quadrant. The overall color palette is dominated by earthy tones, with the terraces appearing in shades of brown, tan, and grey, and the surrounding areas in darker, more muted colors.

Landscapes
since 1993