

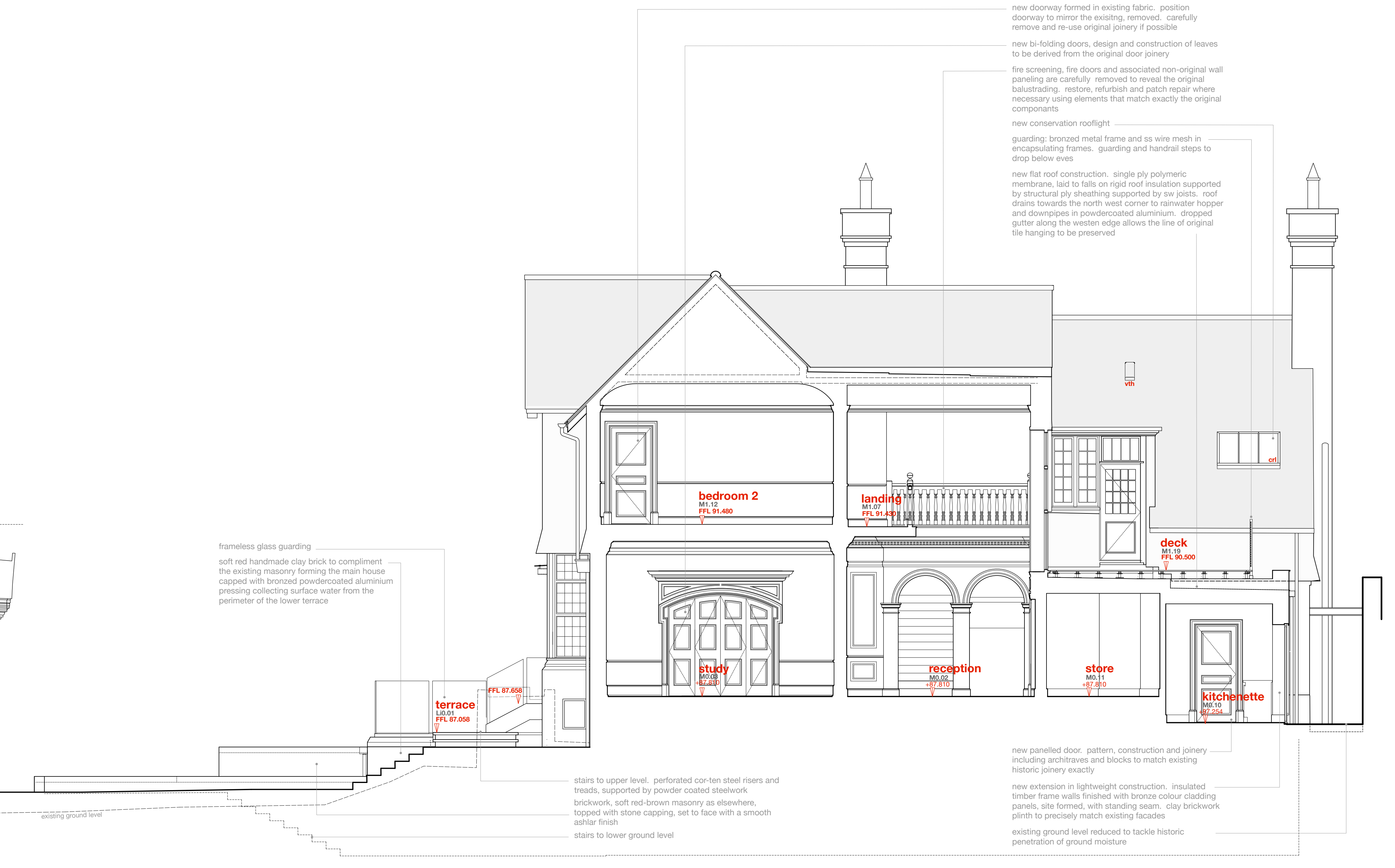
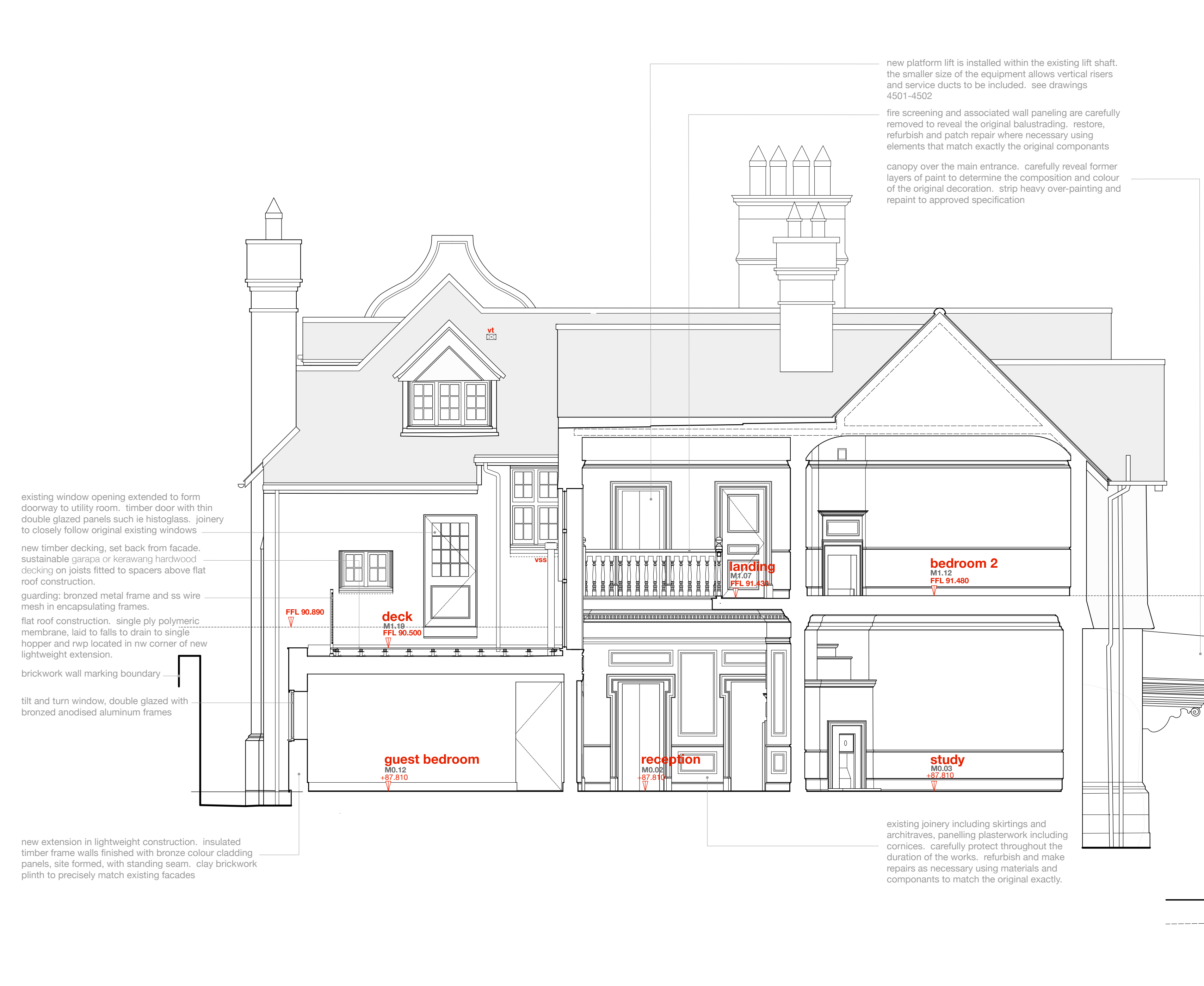
BOWKER SADLER PARTNERSHIP LIMITED
 THIS DRAWING IS THE SUBJECT OF COPYRIGHT WHICH VESTS IN BOWKER SADLER PARTNERSHIP LIMITED. IT IS AN UNREGISTERED COPYRIGHT AND REPRODUCTION OF THIS DRAWING, IN WHATEVER MANNER, INCLUDING ELECTRONIC, WITHOUT THE EXPRESS WRITTEN CONSENT OF BOWKER SADLER PARTNERSHIP LIMITED WHICH RESERVES ALL ITS RIGHTS.
 BOWKER SADLER PARTNERSHIP LIMITED ASSUMES ITS RIGHTS TO BE IDENTIFIED AS THE AUTHOR OF THIS DESIGN.
 REPORT ERRORS & OMISSIONS TO ARCHITECT.
 CHECK ALL DIMENSIONS ON SITE.
 DRAWING TO BE READ IN CONJUNCTION WITH THE HEALTH AND SAFETY PLAN AND ALL RELEVANT RISK ASSESSMENTS.

Survey drawings are kindly provided by Gibson Hughes Land Survey Ltd and are assumed to accurately describe the existing buildings, services and external spaces.

KEY
Windows
 bhc bottom hung timber casement window
 thc top hung timber casement window
 shc side hung casement
 vsh vertical sliding sash timber window
 tt tilt and turn window
 fl fixed light timber window
 fl roof light flat roof
 vl valux style roof light glazed roof
 ort conservation style roof light pitched roof
 h ceiling hatch
 sd sliding door
 pd pivot door

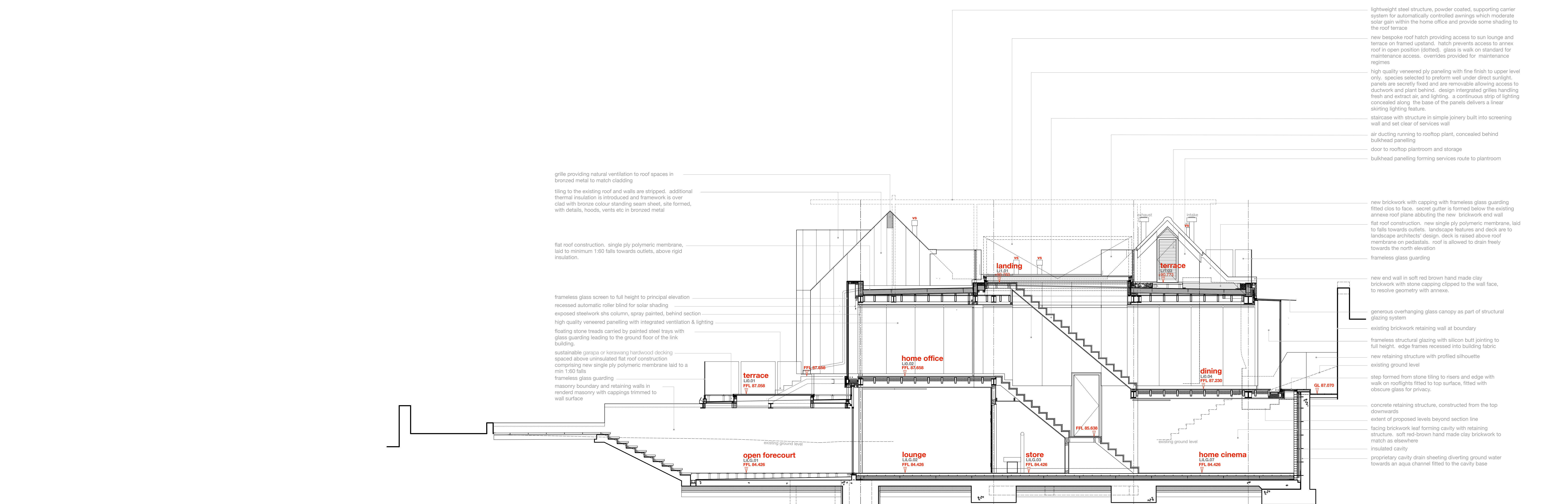
ventilation and flues
 f wall / roof mounted flue to gas boiler / gas fire, terminal colour to black
 ab1 air brick wall terminal as extract to bathrooms, kitchens etc, arnoex only, standard VLB30 weather boards, various sizes, in powder coated aluminium, colour to suit brickwork
 ab2 air brick wall terminal as extract to bathrooms, kitchens etc, main house and lodge, 25x425mm bespoke hi and rise vent with vertical slots in powder coated aluminium, colour to black
 ab3 air brick, with flyscreen removed for greater ventilation rate
 ab4 re-use existing terracotta airbrick
 vt low profile ventilated roof tile, colour and size matched to existing
 vth hooded ventilated roof tile, colour and size matched to existing
 vs ventilation stack, black
 nvs ventilation stack, polished stainless steel

note: existing windows are generally timber frames with leaded glazing (single glazed) and fire painted metal sashes, some multiwork has been removed with one exception to remain the original sash.
 on the north and the west elevations of the main house the windows are simpler with single glazing and pair foot timber frames. there are a pair of painted metal frame windows on the north elevation.
 the timber casement windows found on the annex will be replaced by low profile double glazed units with an arched bronze alum frame.
 Existing building fabric and structure, including roofs, sills, masonry, windows, and plasterwork to be maintained and repaired/retained where necessary. the conditions survey will form the basis from which the maintenance works will be scheduled and agreed.



Section CC: West

Section DD: East
DATUM RL 0.000



Section EE: East
DATUM RL 0.000

REV	DATE	DRN	CHKD
REV F	09 Mar 2022	GM/G	
REV E	06 Sep 2021	GM/G	
REV D	15 Jan 2021	GM/G	
REV C	09 Sep 2020	GM/G	
REV B	10 Aug 2020	GM/G	
REV A	05 Dec 2019	GM/G	

PROJECT
 The Hoo, Scheme 2
 17 Lyndhurst Gardens,
 Hampstead, London
 Returning a Grand Victorian House to Private Domestic Accommodation
 NW3 5NU

CLIENT
 Mr and Mrs Yu
 REPRESENTED BY
 JAGA Developments (London)

DRAWING
 Sections CC-EE
 as Proposed

SCALE	SHEET SIZE	DRAWN	CHECKED	DATE
1:50	A0	GM/G	GM/G	Oct 2019

BOWKER SADLER ARCHITECTURE
 A: Hatherlow House, Hatherlow, Romley, Stockport SK9 3DY
 T: 0161 408 7333
 E: info@bowker-sadler.co.uk
 W: www.bowker-sadler.co.uk

JOB No	DRAWING No	REVISION
19013	1151	F
STATUS	PLANNING	