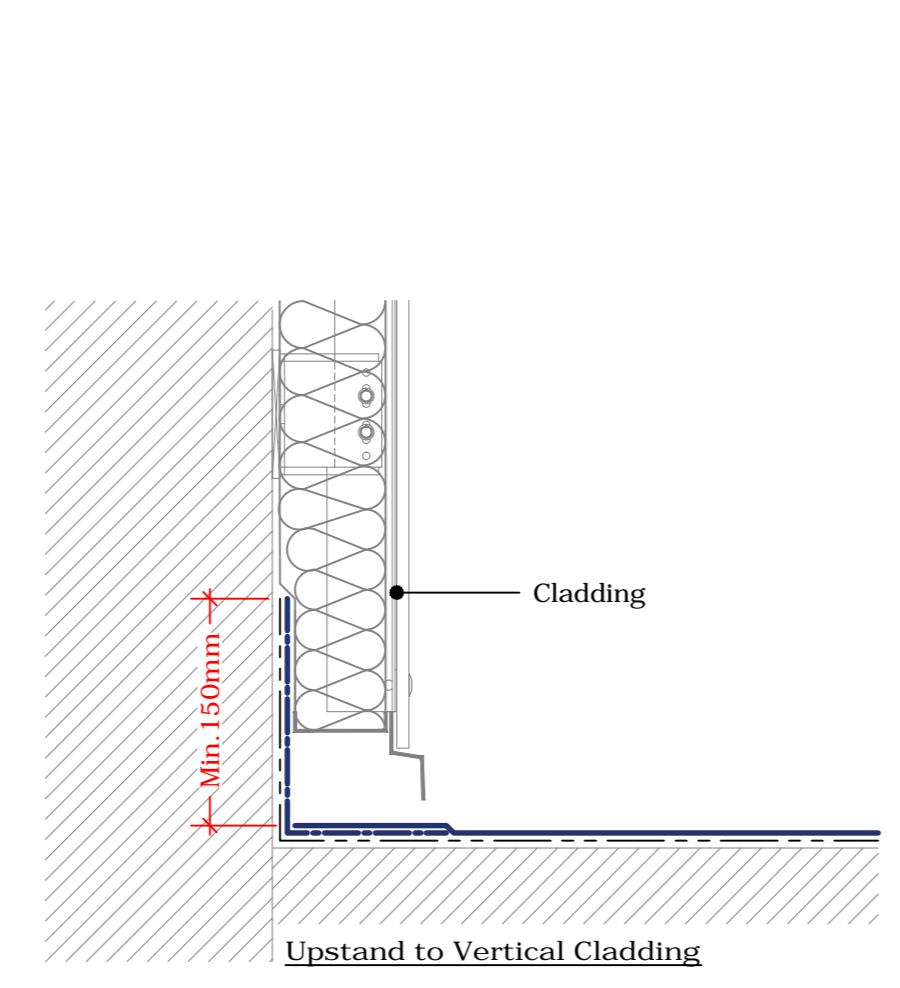
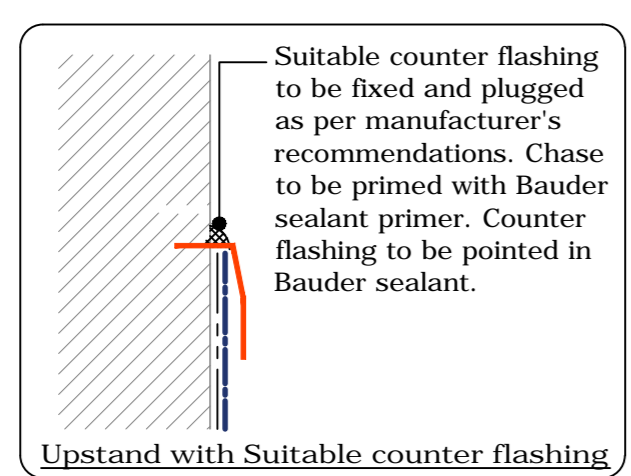
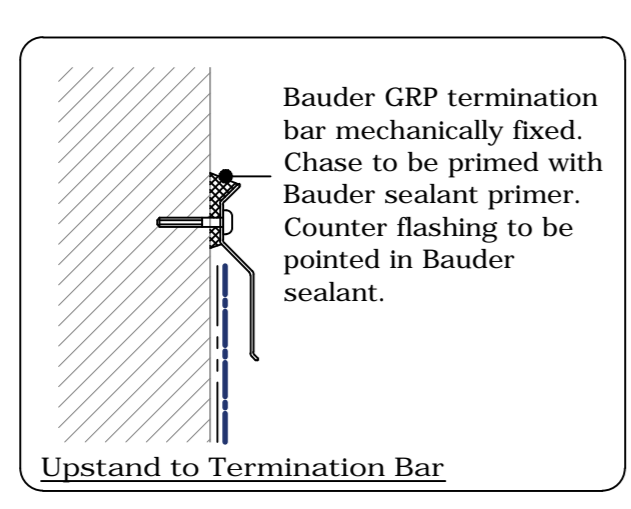
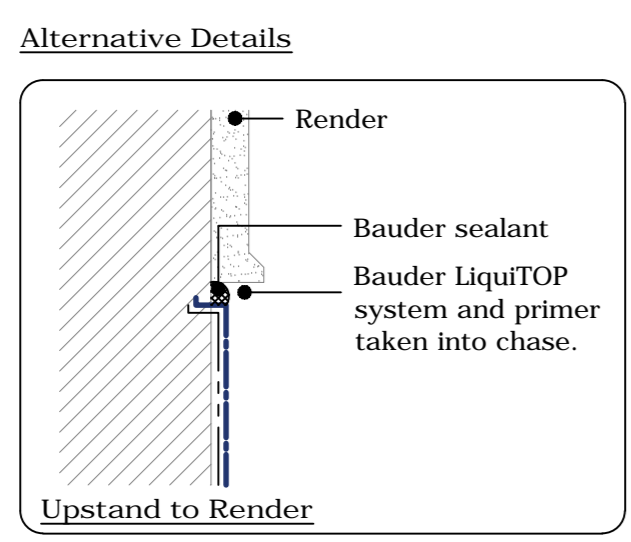
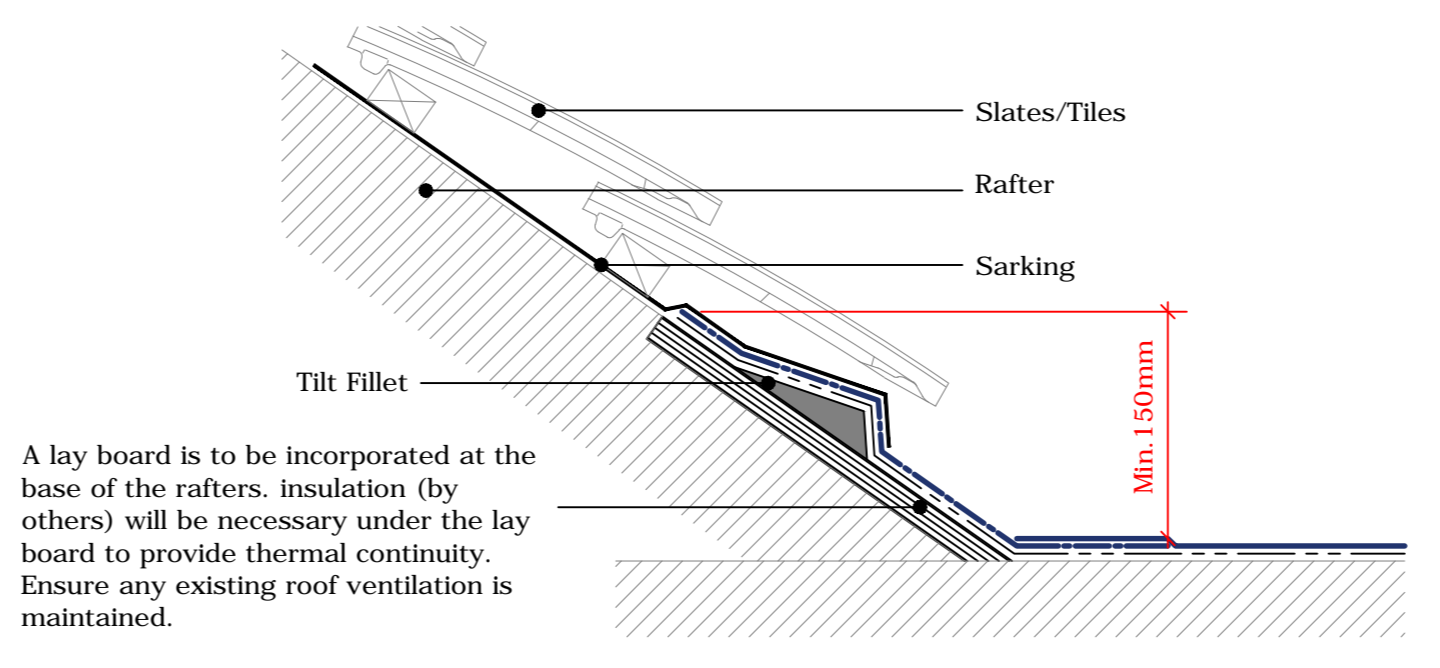
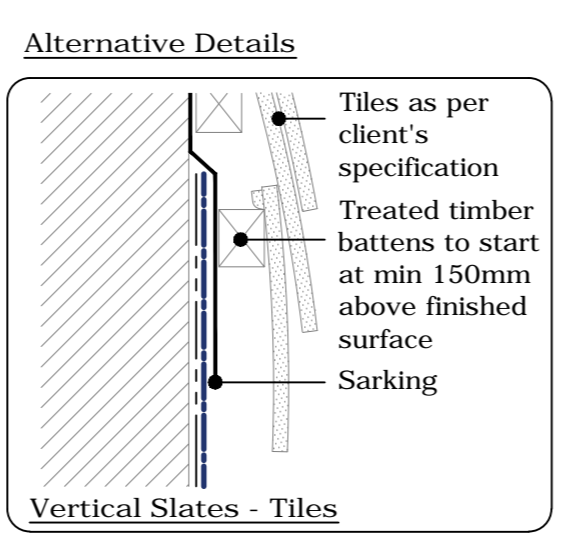


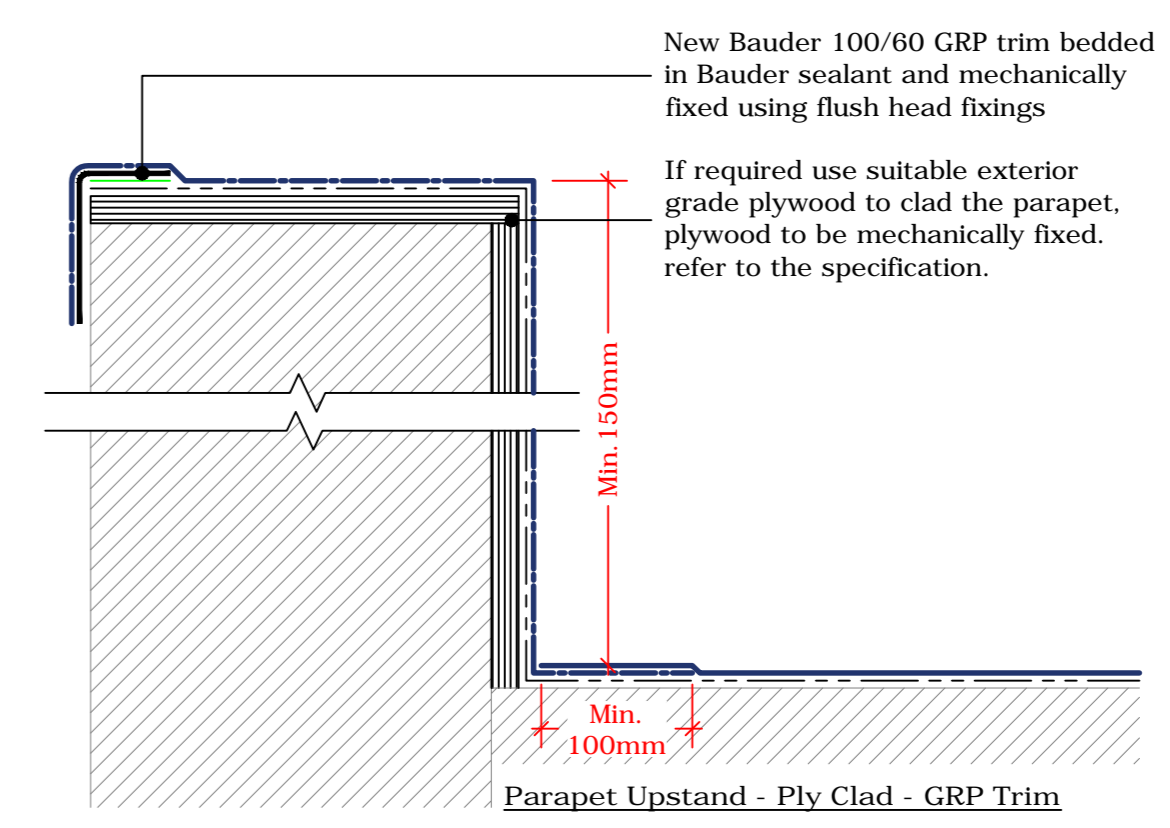
Upstand Options
(Drg.No: D0807-00C-101_001)



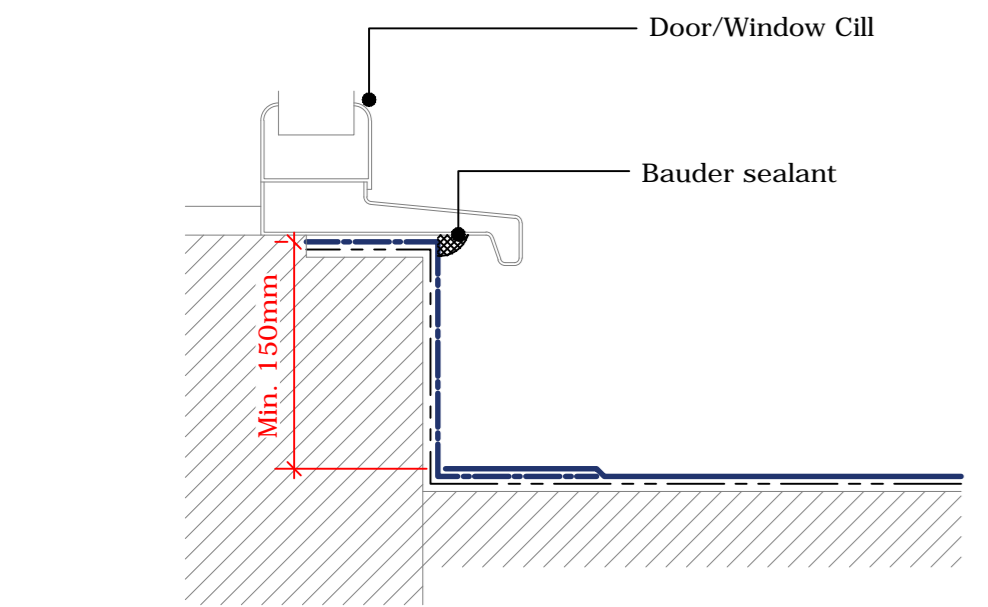
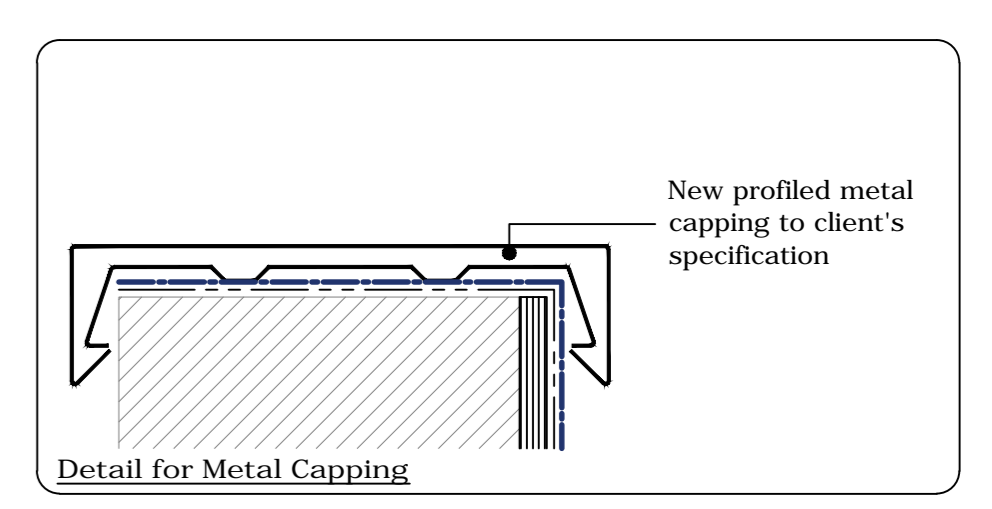
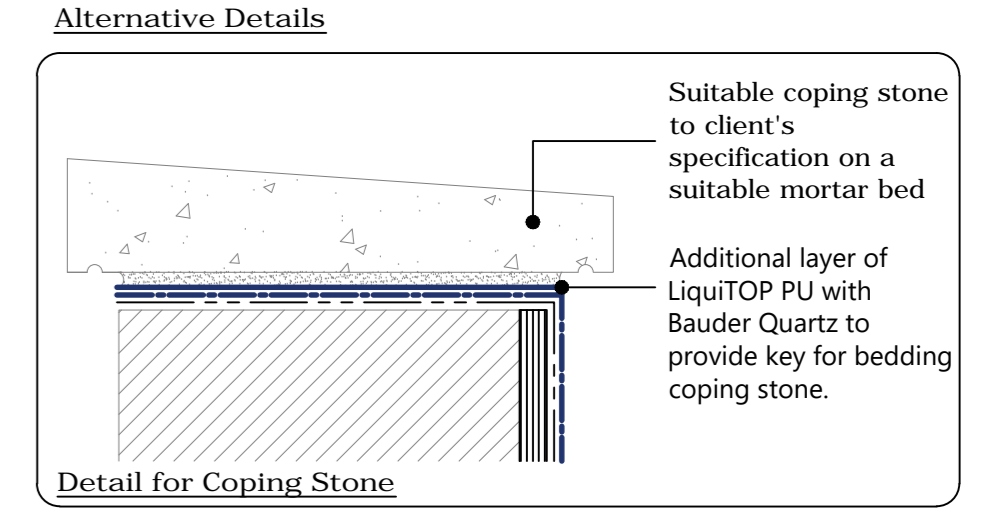
Upstand to Vertical Cladding or Slates/Tiles
(Drg.No: D0807-00C-101_002)



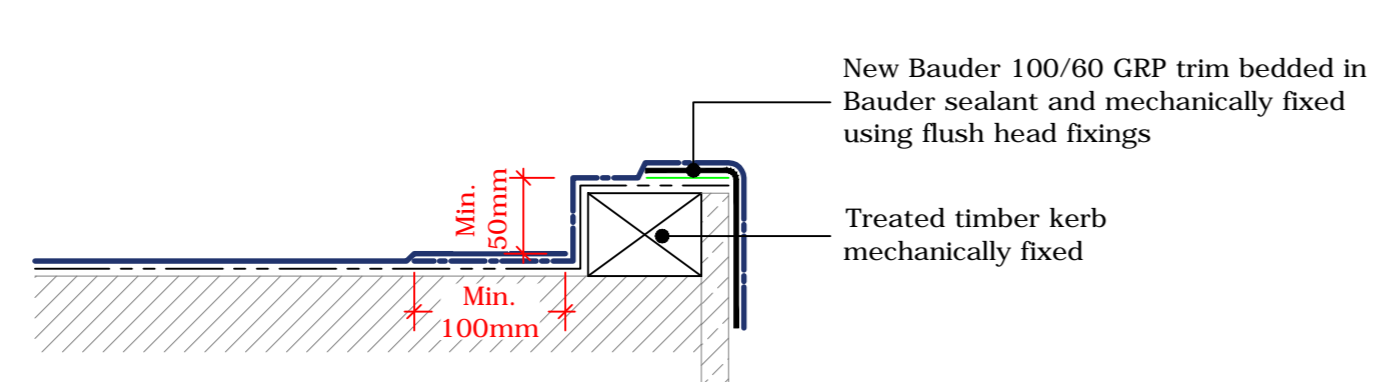
Upstand to Pitched Roof
(Drg.No: D0807-00C-001_004)



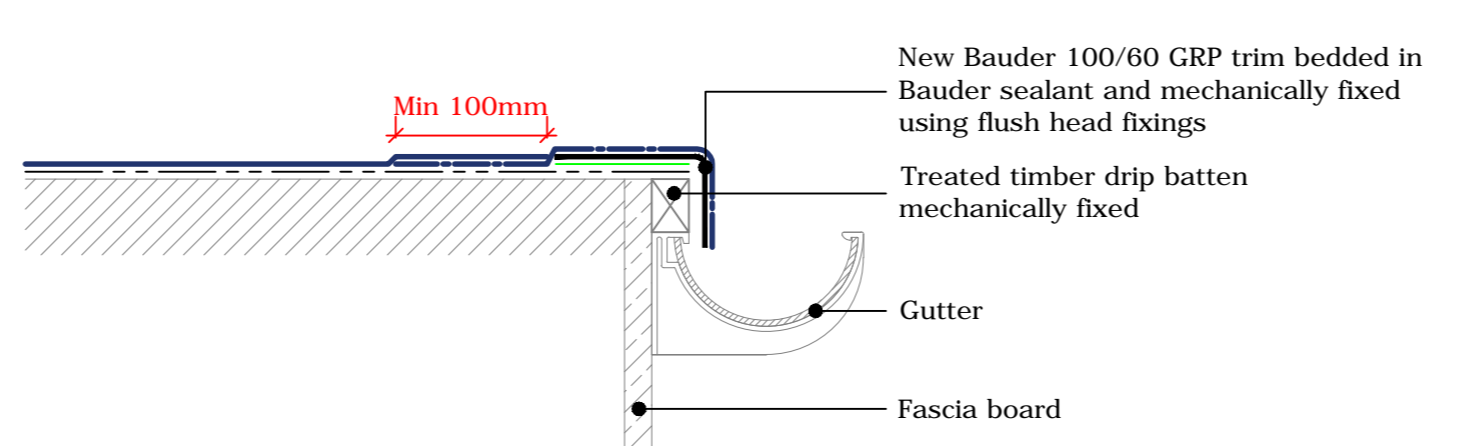
Parapet Upstand
(Drg.No: D0807-00C-103_001)



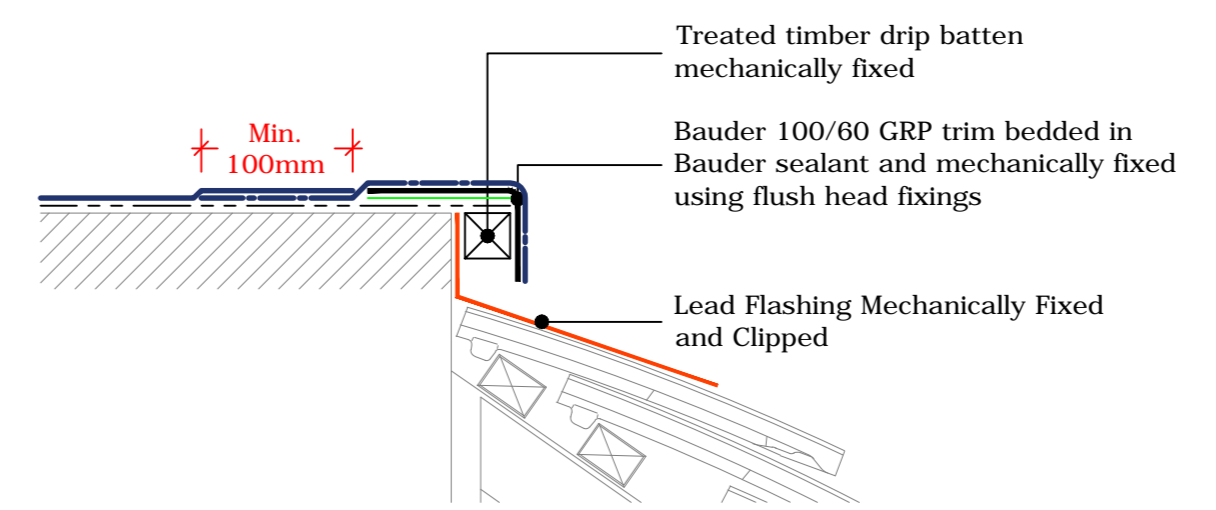
Upstand to Raised Sills
(Drg.No: D0807-00C-002_003)



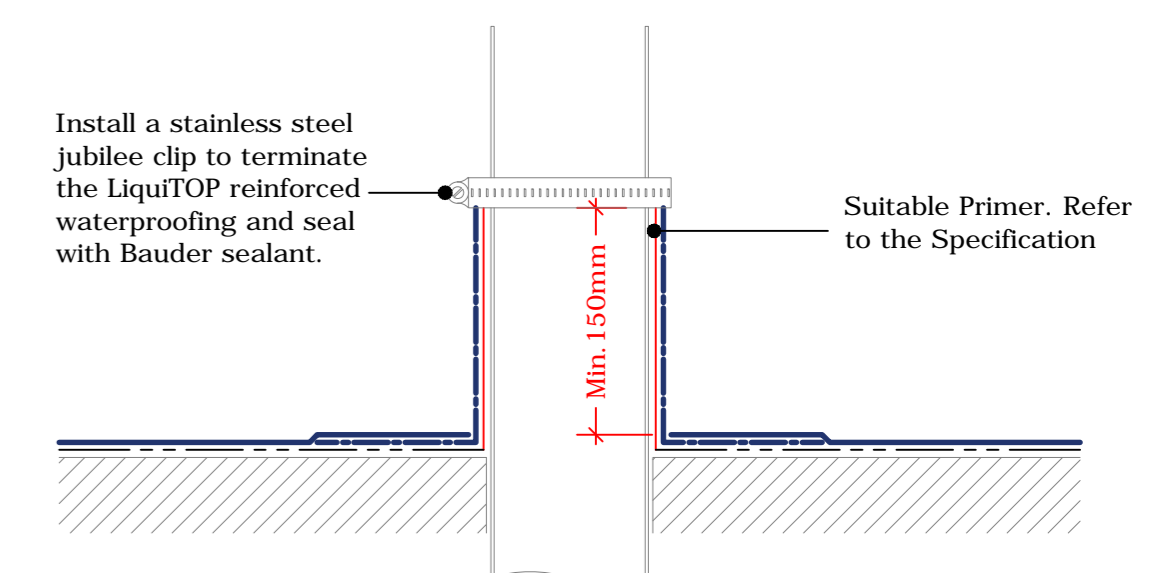
Perimeter Kerb
(Drg.No: D0807-00C-006_001)



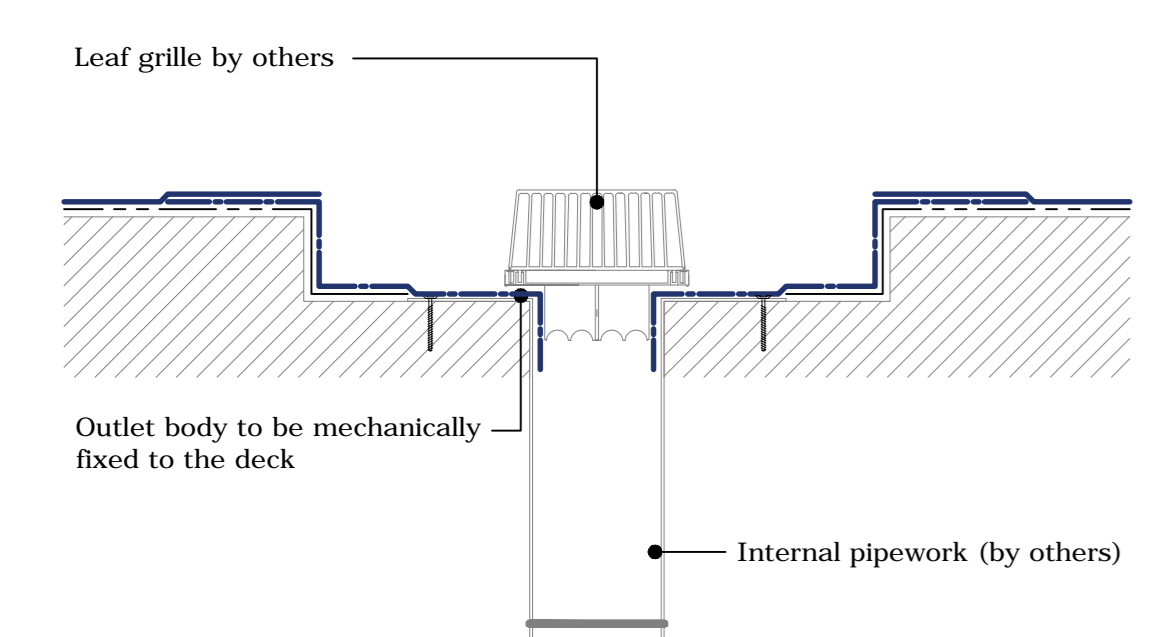
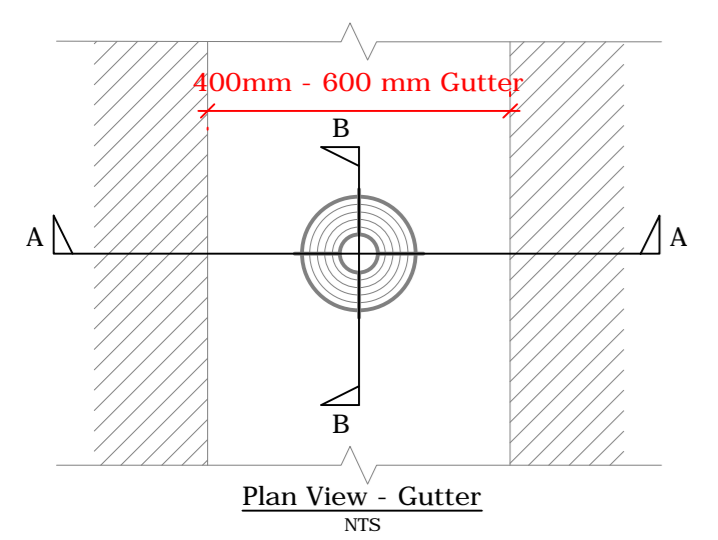
External Gutter
(Drg.No: D0807-00C-006_005)



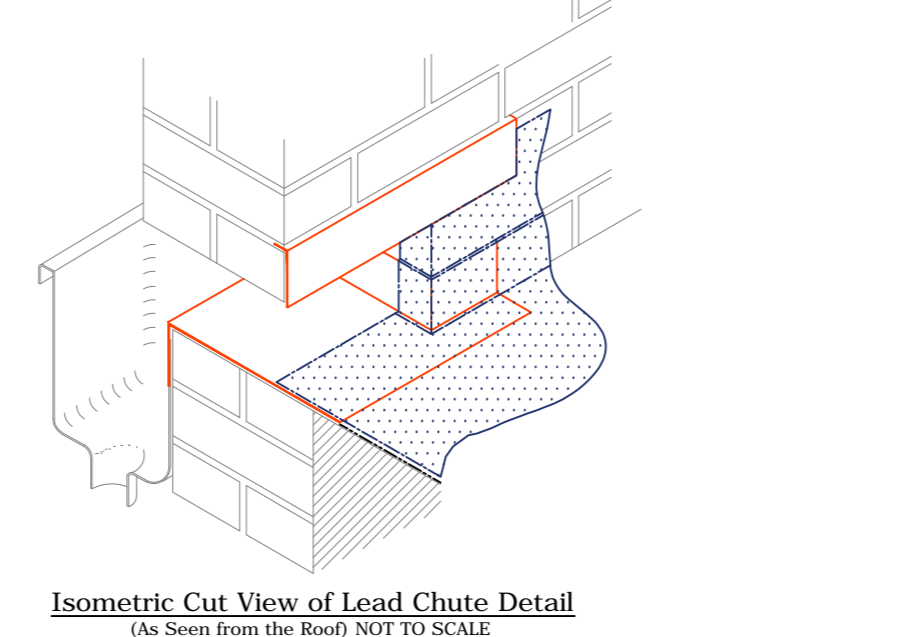
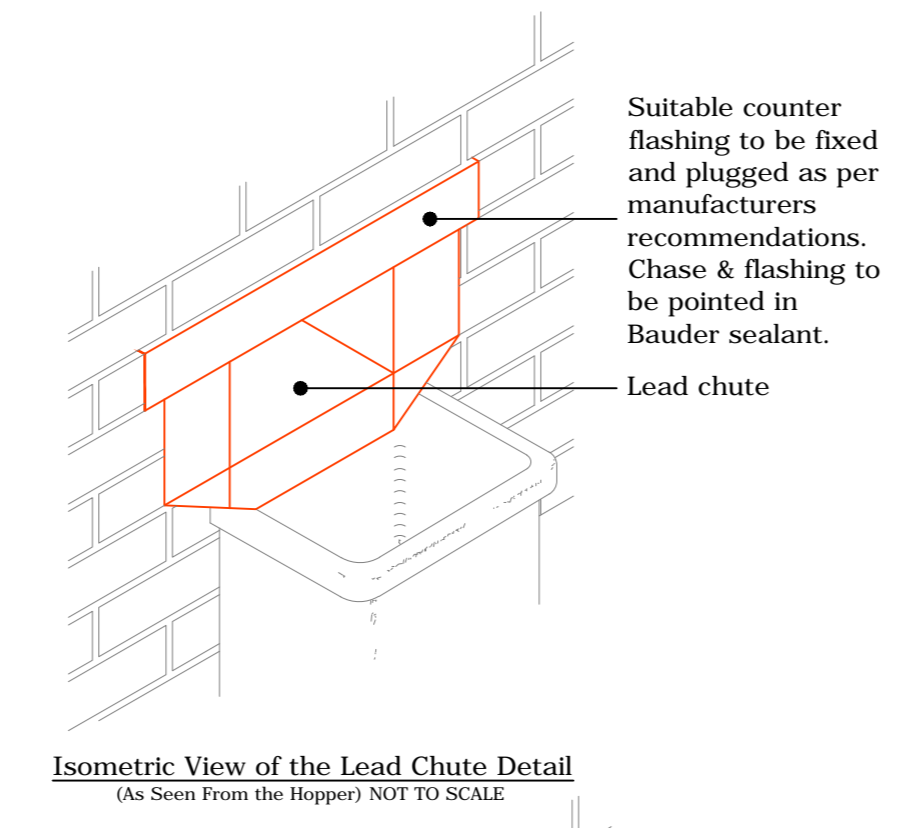
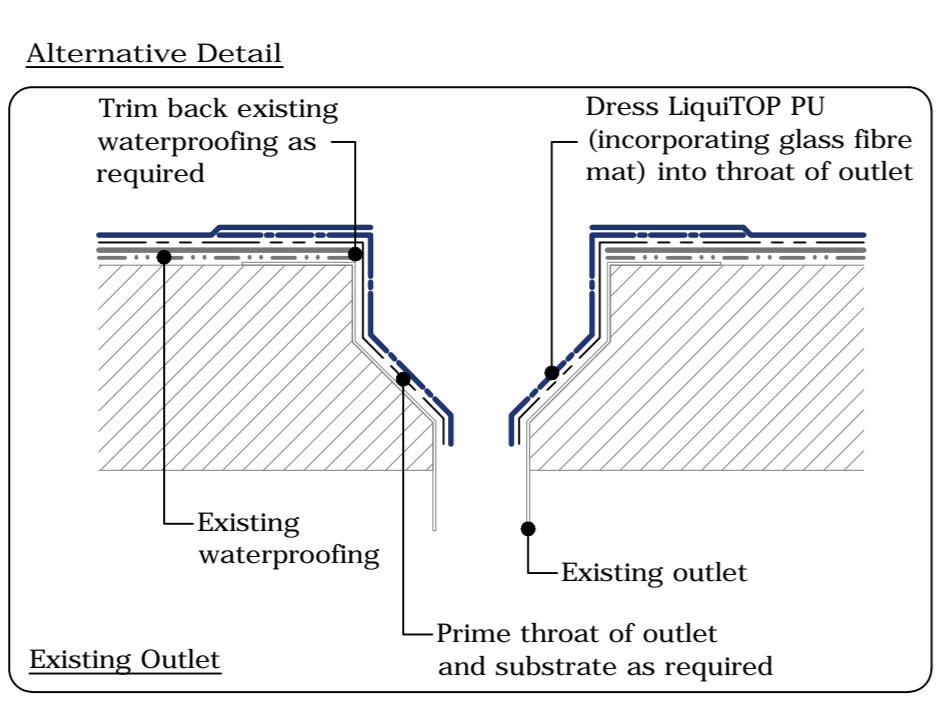
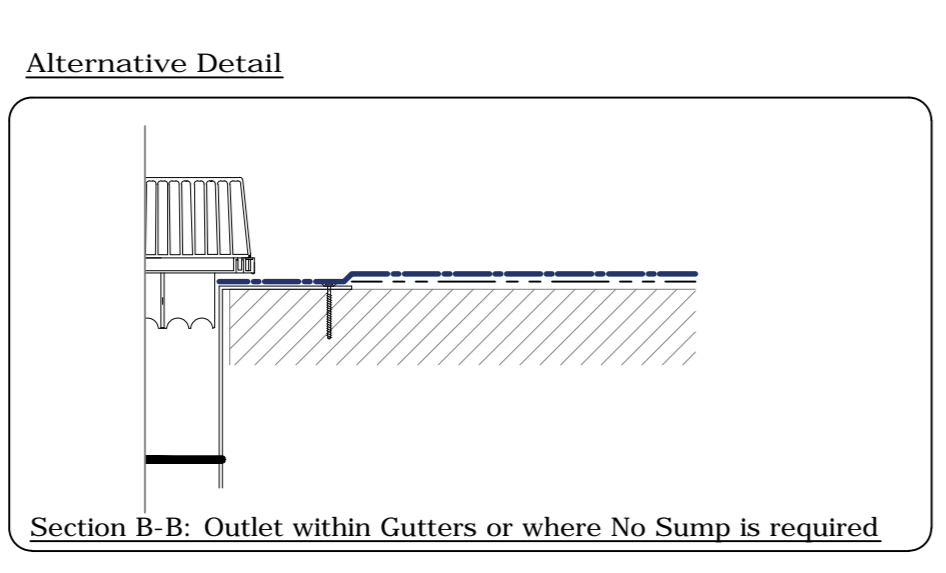
Mansard Roof
(Drg.No: D0807-00C-006_006)



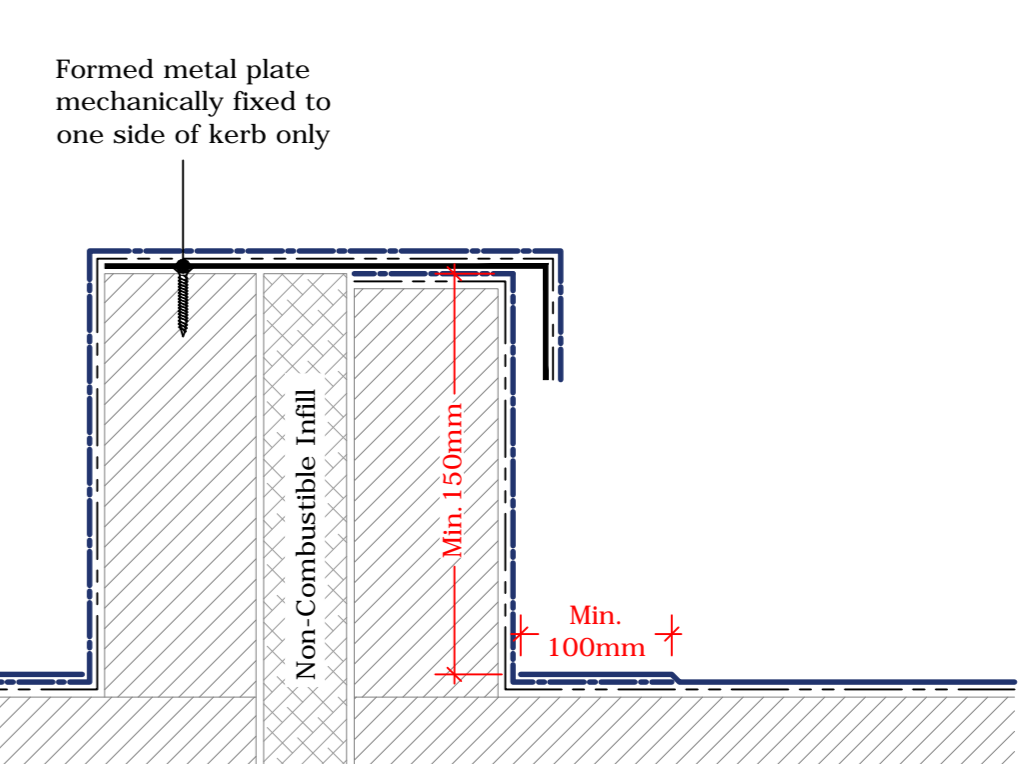
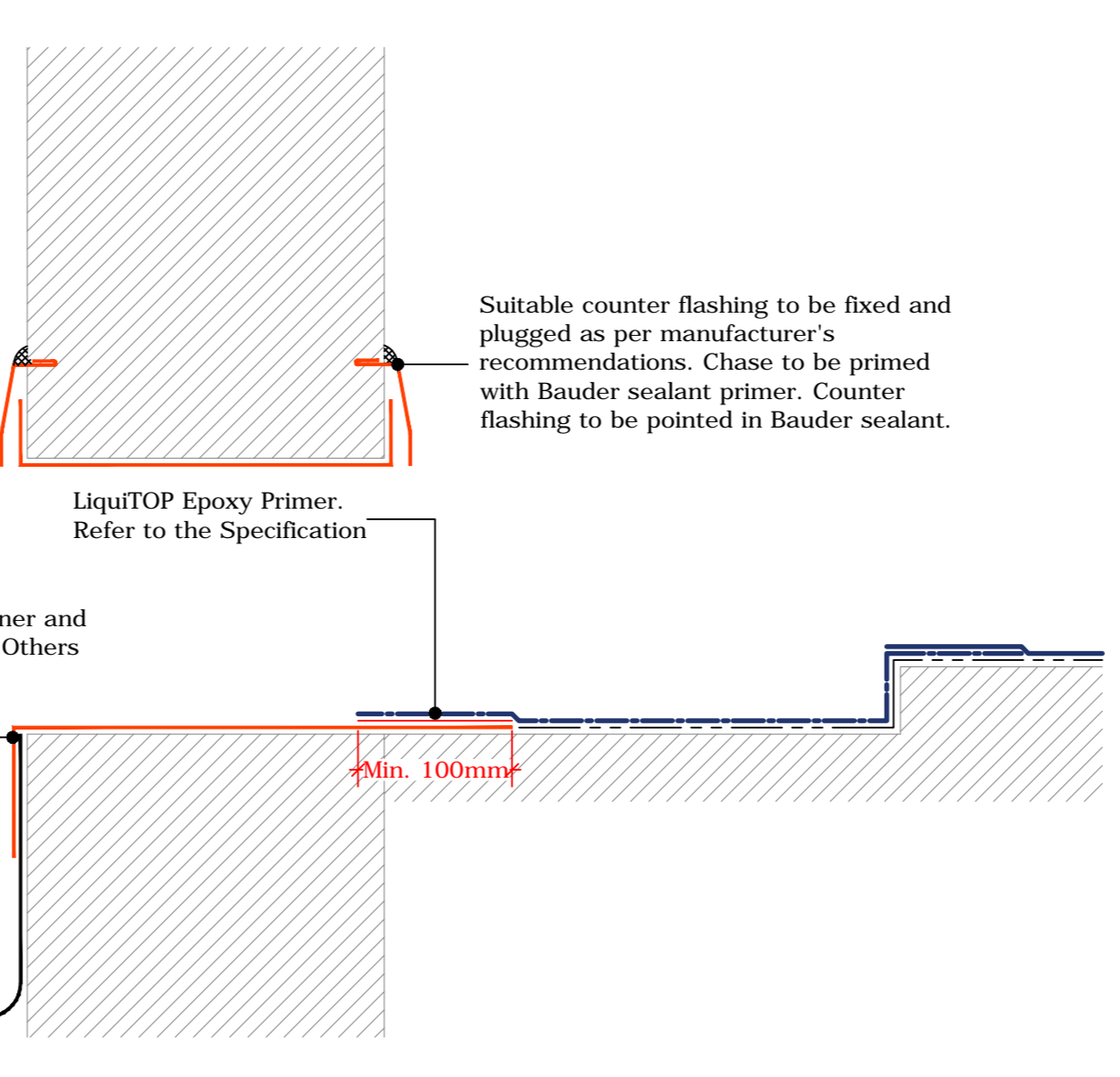
Upstand - Soil Vent Pipe
(Drg.No: D0807-00C-007_001)



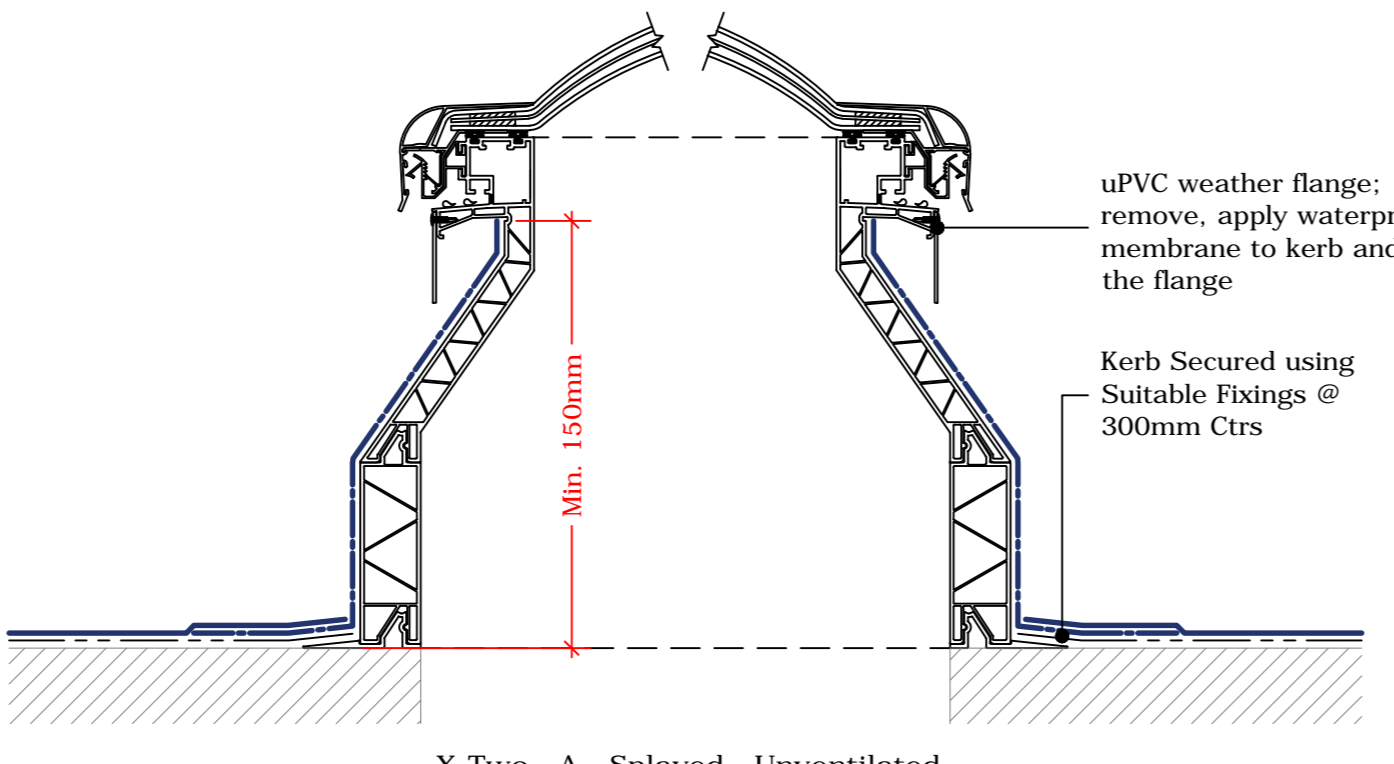
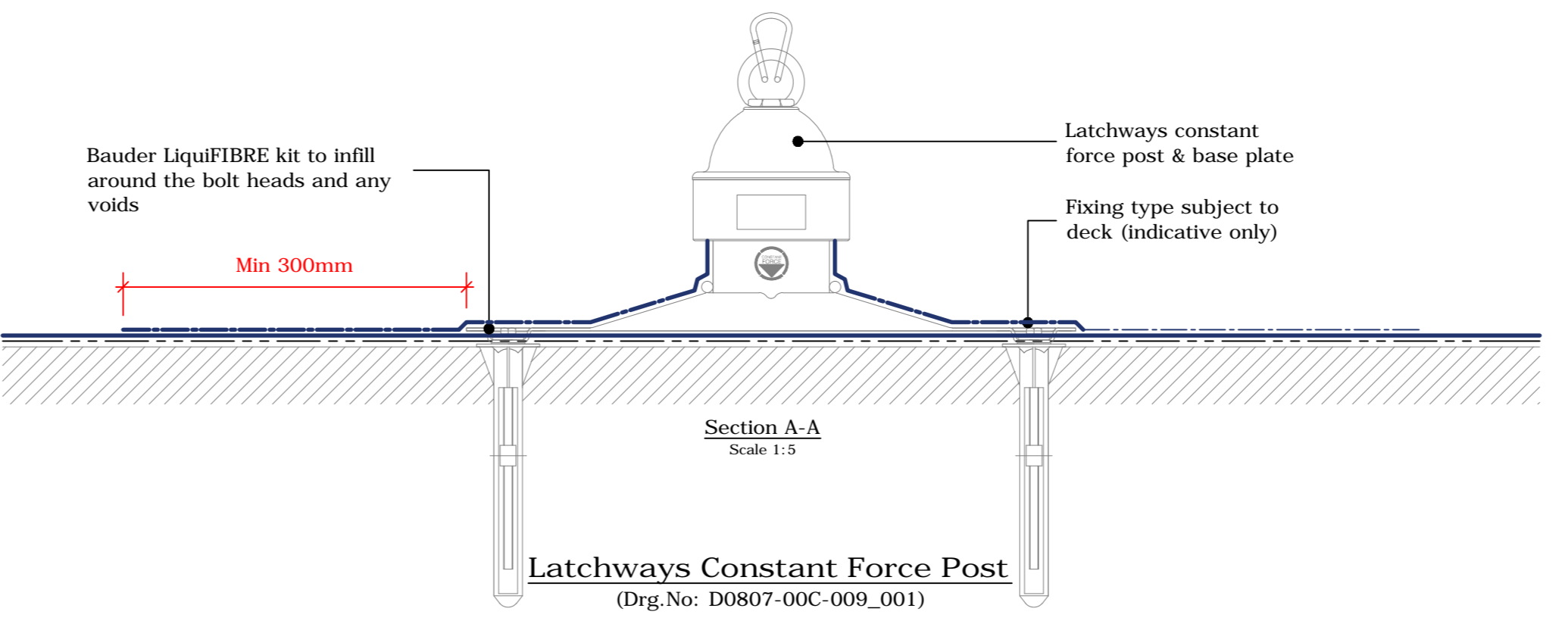
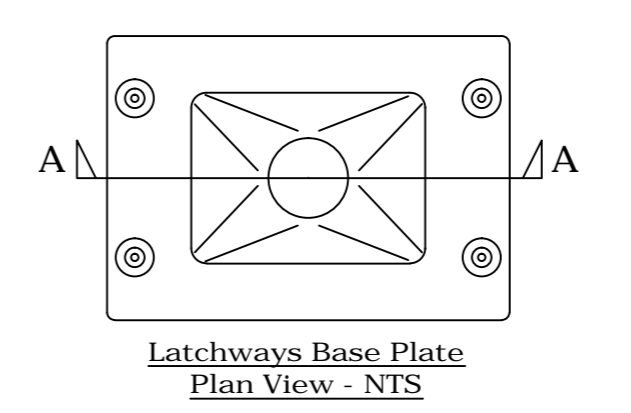
Bauder Outlet
(Drg.No: D0807-00C-006_001)



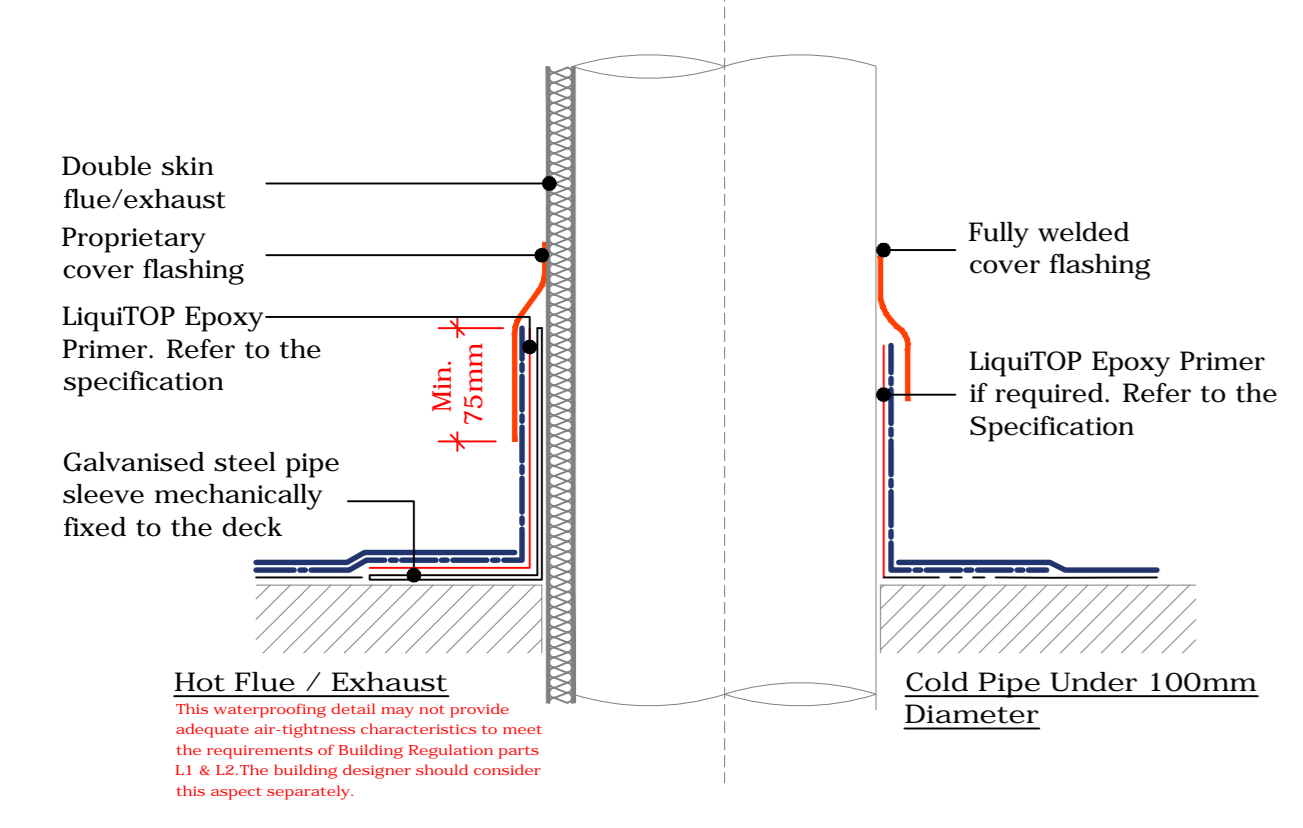
Upstand - Lead Chute
(Drg.No: D0807-00C-106_002)



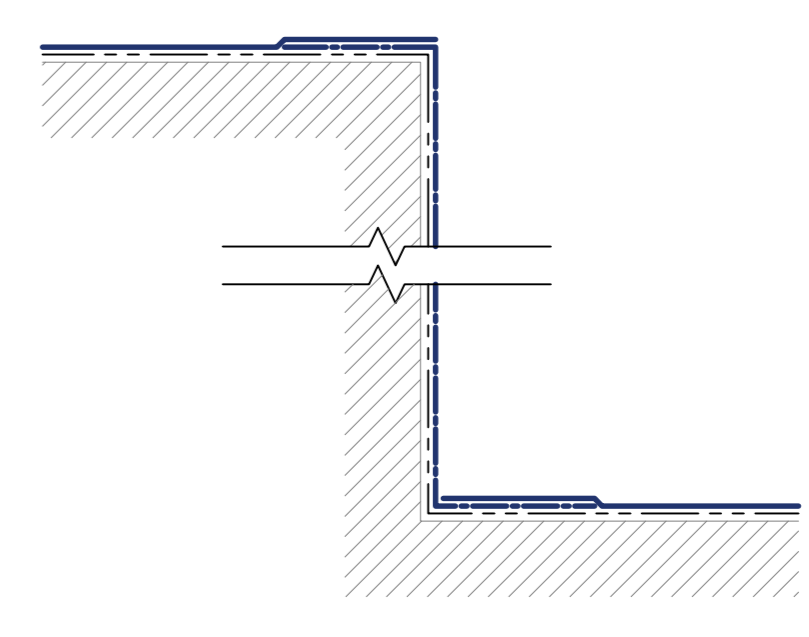
Twin Kerb Expansion Joint
(Drg.No: D0807-00C-104_001)



Rooflight - EuroGlaze
(Drg.No: D0807-00C-008_001)



Upstand to Hot Flue and Cold Pipe
(Drg.No: D0807-00C-007_002)



Change In Levels
(Drg.No: D0807-00C-110_001)

Key

- Bauder LiquiTOP PU (Incorporating LiquiTOP Glass Fibre Mat)
- Bauder LiquiTOP PU (Incorporating LiquiTOP Glass Fibre Mat)
- Bauder LiquiTOP Primer
- Bauder Sealant
- Bauder 100/60 GRP Trim
- Treated Timber
- Deck / Substrate

IMPORTANT NOTES:

- This detail is suitable for the following Bauder Systems: Bauder LiquiTOP Waterproofing System.
- This Drawing Shows Alternative Options. For the Correct Solution to be Used, Refer to the Project Specific Specification.
- Do not scale to ascertain dimensions.
- All dimensions to be checked and verified on site prior to commencement of work.
- This drawing is to be read in conjunction with the specification and associated drawings.
- This detail is a guideline only, representing typical detailing conditions and illustrate the correct application of the above Bauder System. It may be necessary to modify this detail to suit specific project design constraints and conditions.
- Refer to the Bauder Specification for the product description and method of application. For clarity the method of attachment has not been shown.

BAUDER

UK OFFICE: Bauder Limited, 70 Lonslow Road, Ipswich, Suffolk, IP1 0DR, England. Tel: +44 (0)1473 257671 Fax: +44 (0)1473 230761 Email: technical@bauder.co.uk

IRELAND OFFICE: Bauder Limited, O'Duffy Centre, Cross Lane, Carrilmore, Co. Monaghan. Tel: +353 (0)42 8662 333 Fax: +353 (0)42 8662 830 Email: technical@bauder.ie

LIQITOP WATERPROOFING SYSTEM - TYPICAL DETAILS (Cold Roof / Overlay)

Scale: 1:5
Drg.No: D0807-00C-100_001
Rev: A
Issued: CD
Checked By: PH
Approved By: MB
Date: 28.10.21