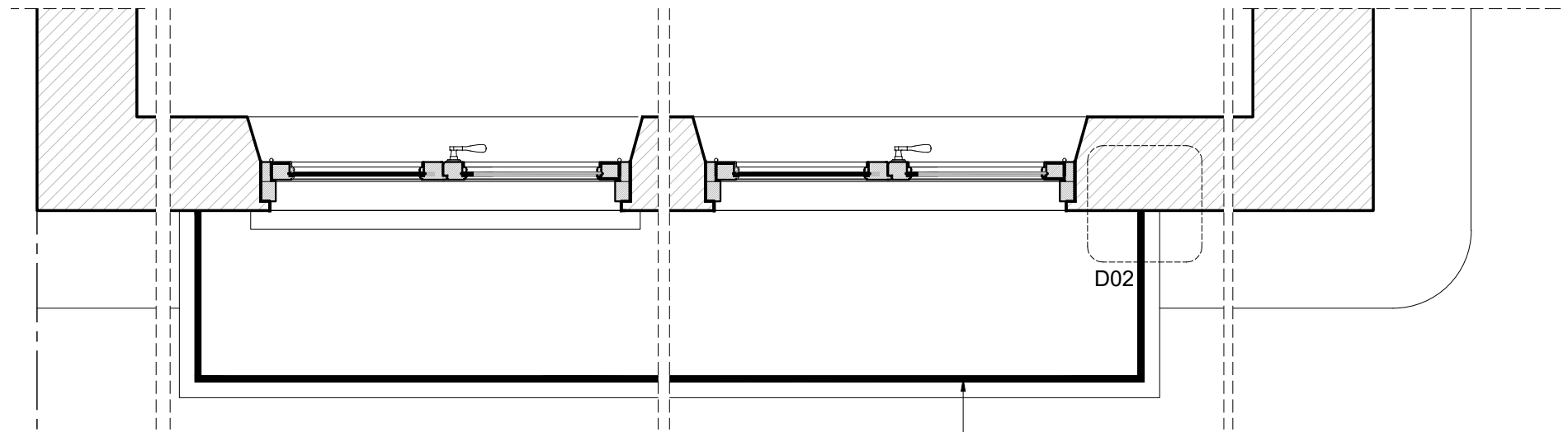


Proposed Front Elevation

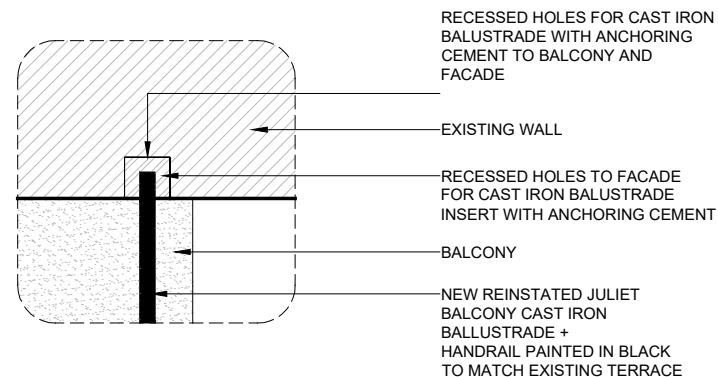
scale: 1:100



Plan / Balcony

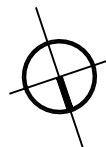
scale: 1:20

NEW REINSTATED JULIET
BALCONY CAST IRON
BALLUSTRADE +
HANDRAIL PAINTED IN BLACK
TO MATCH EXISTING TERRACE



Detail 02 / Balustrade connection to facade

scale: 1:10



PLEASE NOTE:

1. All dimensions to be verified on site before commencement.
2. Contractor must consult the engineers drawings before proceeding with the work.
3. Contractor, sub-contractor or supplier is to report any errors, omission, or discrepancies on the drawings, and shall not vary any work shown on the drawings without obtaining prior approval from the architect.
4. This drawing and design are copyright to SD and remains the property of SD and as such the contents must not be disclosed to anyone or reproduced in any way without prior consent from SD.

5. All design concepts are the exclusive property of SD, and may not be adapted, reproduced, or copied without the written consent or permission of SD.
6. These plans are subject to any variations required or recommended by any legal authority, or for the better performance of the works.
7. All materials, components, and workmanship to comply with the relevant British Standards, Codes of Practice, and appropriate manufacturers' recommendations.

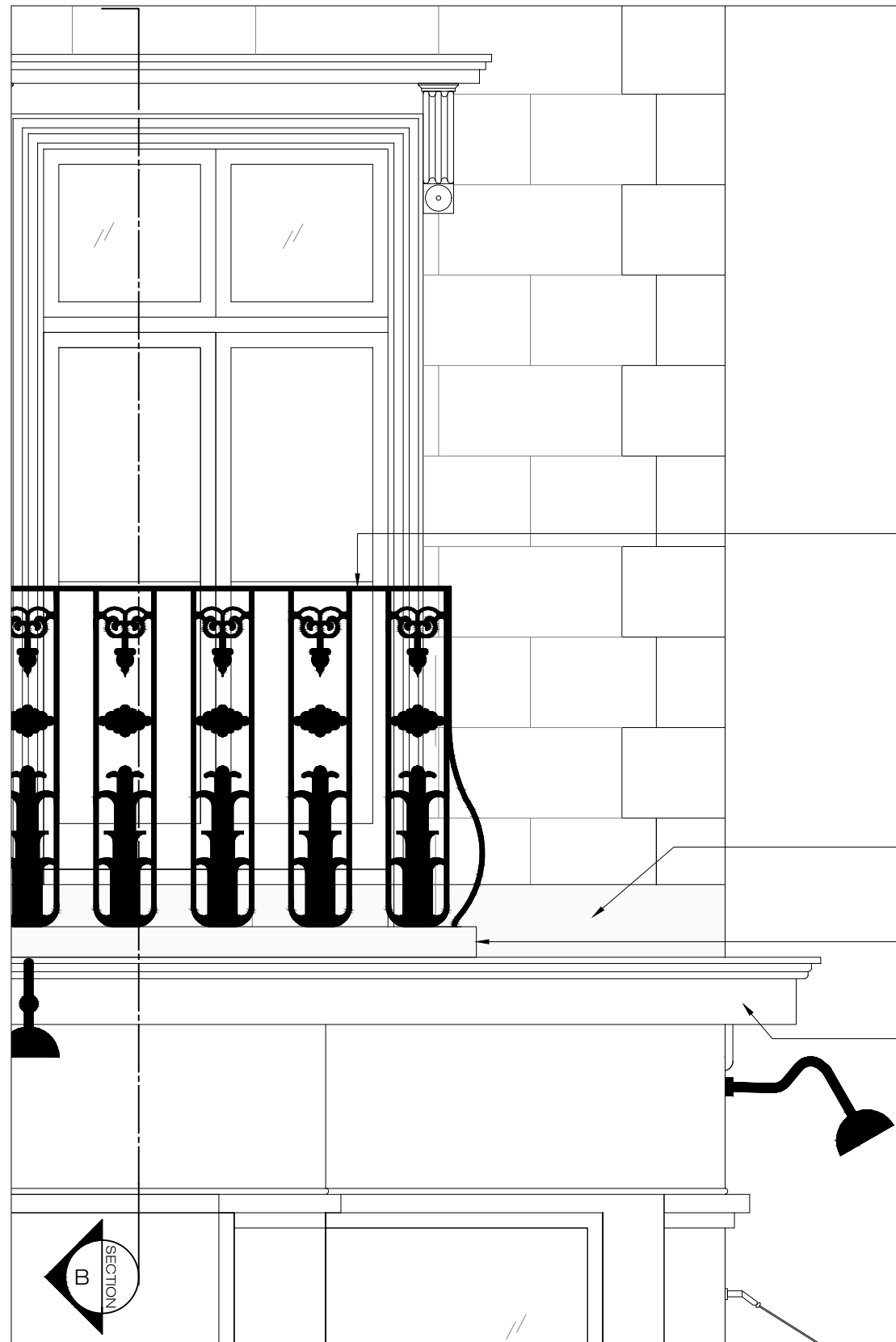
Rev	Issued for	Date	By	Issued
00	PLANNING / CONDITION	14.11.2024	By	BL

SCHNEIDER DESIGNERS
architecture . design . interiors

Basement Unit, 14 Eldon Grove, London NW3 5PT
Tel: +44 (0) 020 7435 7105
enquiries@schneiderdesigners.co.uk
www.schneiderdesigners.co.uk



PROJECT 9 Princess Road London NW1 8JN		PROJECT NO. 232	
SCALE 1:100/1:20/1:10	FORMAT A3	DRAWN BL	ISSUED BL
DRAWING TITLE Proposed Front		DRAWING NO. 232.(1).1.201	REV 00
Elevation / Plan / Detail 02		STATUS Planning / Conditions	



Detail 01 / Balcony / Balustrade

scale: 1:20

RECESSED HOLES TO BALCONY FOR CAST IRON BALUSTRADE INSERT WITH ANCHORING CEMENT

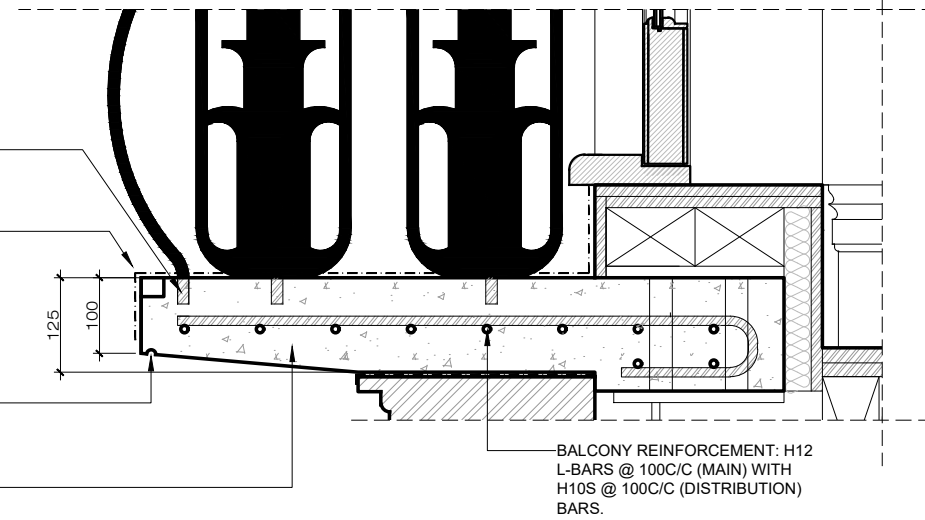
LEAD FLASHING

DRIP DETAIL TO BALCONY

NEW BALCONY FORMED USING 125MM GRADE C32/40 REINFORCED CONCRETE.

Section B / Balcony / Balustrade

scale: 1:10



BALCONY REINFORCEMENT: H12 L-BARS @ 100C/C (MAIN) WITH H10S @ 100C/C (DISTRIBUTION) BARS.

NEW REINSTATED JULIET BALCONY CAST IRON BALUSTRADE + HANDRAIL PAINTED IN BLACK TO MATCH EXISTING TERRACE

PROPOSED LEAD FLASHING

PROPOSED BALCONY ON TOP OF CORNICE

EXISTING CORNICE MOLDING TO BE RETAINED

EXISTING DOORS

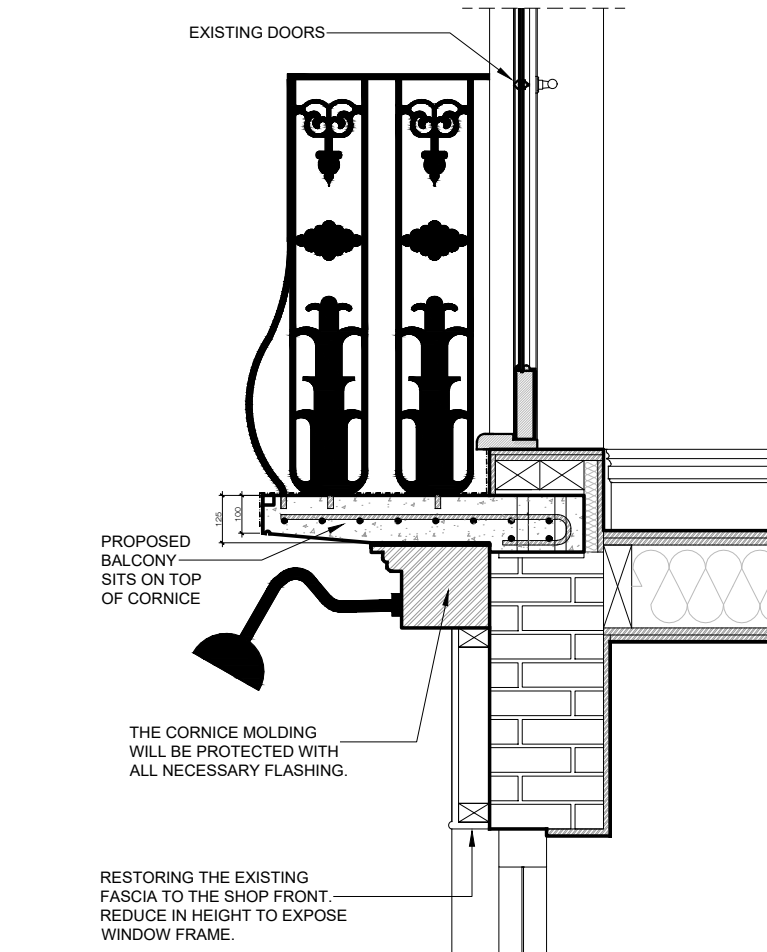
PROPOSED BALCONY SITS ON TOP OF CORNICE

THE CORNICE MOLDING WILL BE PROTECTED WITH ALL NECESSARY FLASHING.

RESTORING THE EXISTING FASCIA TO THE SHOP FRONT. REDUCE IN HEIGHT TO EXPOSE WINDOW FRAME.

Section B / Balcony / Balustrade

scale: 1:20



PLEASE NOTE:

1. All dimensions to be verified on site before commencement.
 2. Contractor must consult the engineer's drawings before proceeding with the work.
 3. Contractor, sub-contractor or supplier is to report any errors, omission, or discrepancies on the drawings, and shall not vary any work shown on the drawings without obtaining prior approval from the architect.
 4. This drawing and design are copyright to SD and remains the property of SD and as such the contents must not be disclosed to anyone or reproduced in any way without prior consent from SD.

5. All design concepts are the exclusive property of SD, and may not be adapted, reproduced, or copied without the written consent or permission of SD.
 6. These plans are subject to any variations required or recommended by any legal authority, or for the better performance of the works.
 7. All materials, components, and workmanship to comply with the relevant British Standards, Codes of Practice, and appropriate manufacturers' recommendations.

Rev	Issued for	Date	By	Issued
00	PLANNING / CONDITION	14.11.2024	By	BL

SCHNEIDER DESIGNERS
 architecture . design . interiors

Basement Unit, 14 Eldon Grove, London NW3 5PT
 Tel: +44 (0) 020 7435 7105
 enquiries@schneiderdesigners.co.uk
 www.schneiderdesigners.co.uk



PROJECT 9 Princess Road London NW1 8JN		PROJECT NO. 232	
SCALE 1:100/1:20	FORMAT A3	DRAWN BL	ISSUED BL
DRAWING TITLE Proposed Balcony & Balustrade Section B		DRAWING NO. 232.(1).1.202	REV 00
STATUS Planning / Conditions			

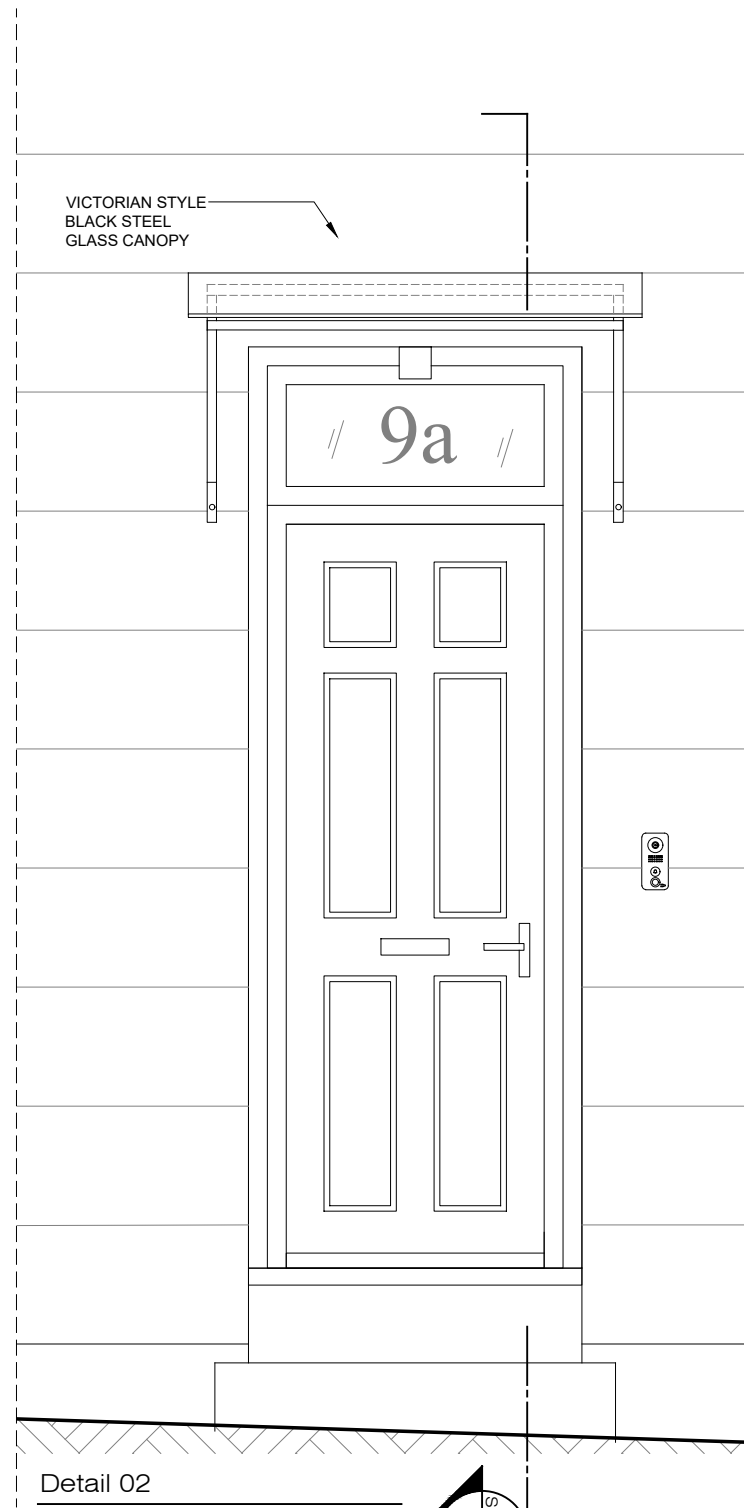


Proposed Side Elevation

scale: 1:100

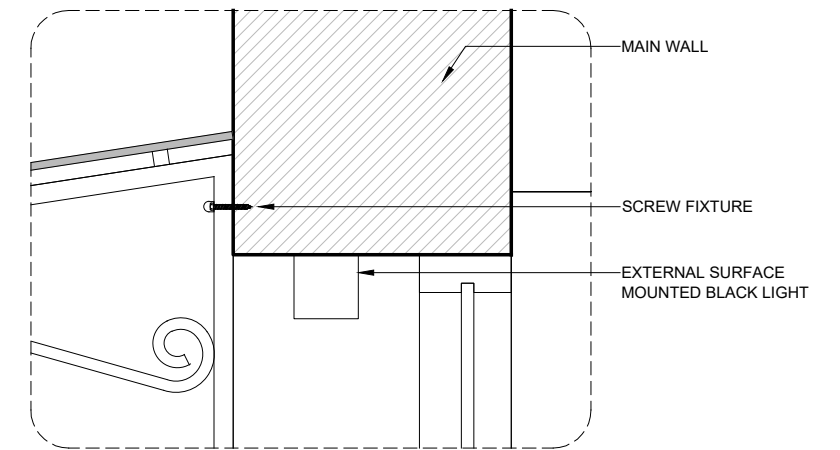
Detail 01 / Balcony Cornice

scale: 1:20



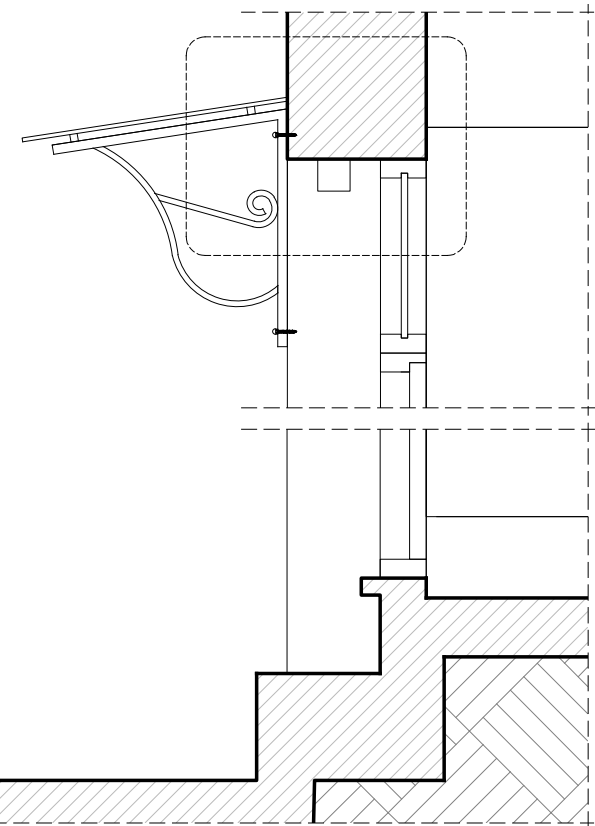
Detail 02

scale: 1:20



Section A

scale: 1:10



Section A

scale: 1:20

PLEASE NOTE:

1. All dimensions to be verified on site before commencement.
2. Contractor must consult the engineers drawings before proceeding with the work.
3. Contractor, sub-contractor or supplier is to report any errors, omission, or discrepancies on the drawings, and shall not vary any work shown on the drawings without obtaining prior approval from the architect.
4. This drawing and design are copyright to SD and remains the property of SD and as such the contents must not be disclosed to anyone or reproduced in any way without prior consent from SD.

5. All design concepts are the exclusive property of SD, and may not be adapted, reproduced, or copied without the written consent or permission of SD.
6. These plans are subject to any variations required or recommended by any legal authority, or for the better performance of the works.
7. All materials, components, and workmanship to comply with the relevant British Standards, Codes of Practice, and appropriate manufacturers' recommendations.

Rev	Issued for	Date	By	Issued
00	PLANNING / CONDITION	14.11.2024	By	BL

SCHNEIDER DESIGNERS
architecture . design . interiors

Basement Unit, 14 Eldon Grove, London NW3 5PT
Tel: +44 (0) 020 7435 7105
enquiries@schneiderdesigners.co.uk
www.schneiderdesigners.co.uk



PROJECT		DRAWN		ISSUED		PROJECT NO.
9 Princess Road London NW1 8JN		BL	BL	BL	BL	232
SCALE	FORMAT	DRAWING NO.	ISSUED	DATE	REV	DATE
1:100/1:20/1:10	A3	232.(1).1.203	BL	14-Nov-2024	00	
DRAWING TITLE		STATUS				
Proposed Balcony & Balustrade Section B		Planning / Conditions				



Steel Glass Canopy

PAINTED : BLACK



Balcony / Balustrade

PAINTED : BLACK



Surface Mounted Light

PAINTED : BLACK

PLEASE NOTE:

1. All dimensions to be verified on site before commencement.
2. Contractor must consult the engineer's drawings before proceeding with the work.
3. Contractor, sub-contractor or supplier is to report any errors, omission, or discrepancies on the drawings, and shall not vary any work shown on the drawings without obtaining prior approval from the architect.
4. This drawing and design are copyright to SD and remains the property of SD and as such the contents must not be disclosed to anyone or reproduced in any way without prior consent from SD.

5. All design concepts are the exclusive property of SD, and may not be adapted, reproduced, or copied without the written consent or permission of SD.
6. These plans are subject to any variations required or recommended by any legal authority, or for the better performance of the works.
7. All materials, components, and workmanship to comply with the relevant British Standards, Codes of Practice, and appropriate manufacturers' recommendations.

Rev	Issued for	Date	By	Issued
00	PLANNING / CONDITION	14.11.2024	By	BL

SCHNEIDER DESIGNERS
architecture . design . interiors



Basement Unit, 14 Eldon Grove, London NW3 5PT
Tel: +44 (0) 020 7435 7105
enquiries@schneiderdesigners.co.uk
www.schneiderdesigners.co.uk

PROJECT 9 Princess Road London NW1 8JN		PROJECT NO. 232	
SCALE n/a	FORMAT A3	DRAWN BL	ISSUED BL
DRAWING TITLE Proposed Fixtures		DRAWING NO. 232.(1).1.204	REV 00
STATUS Planning / Conditions			