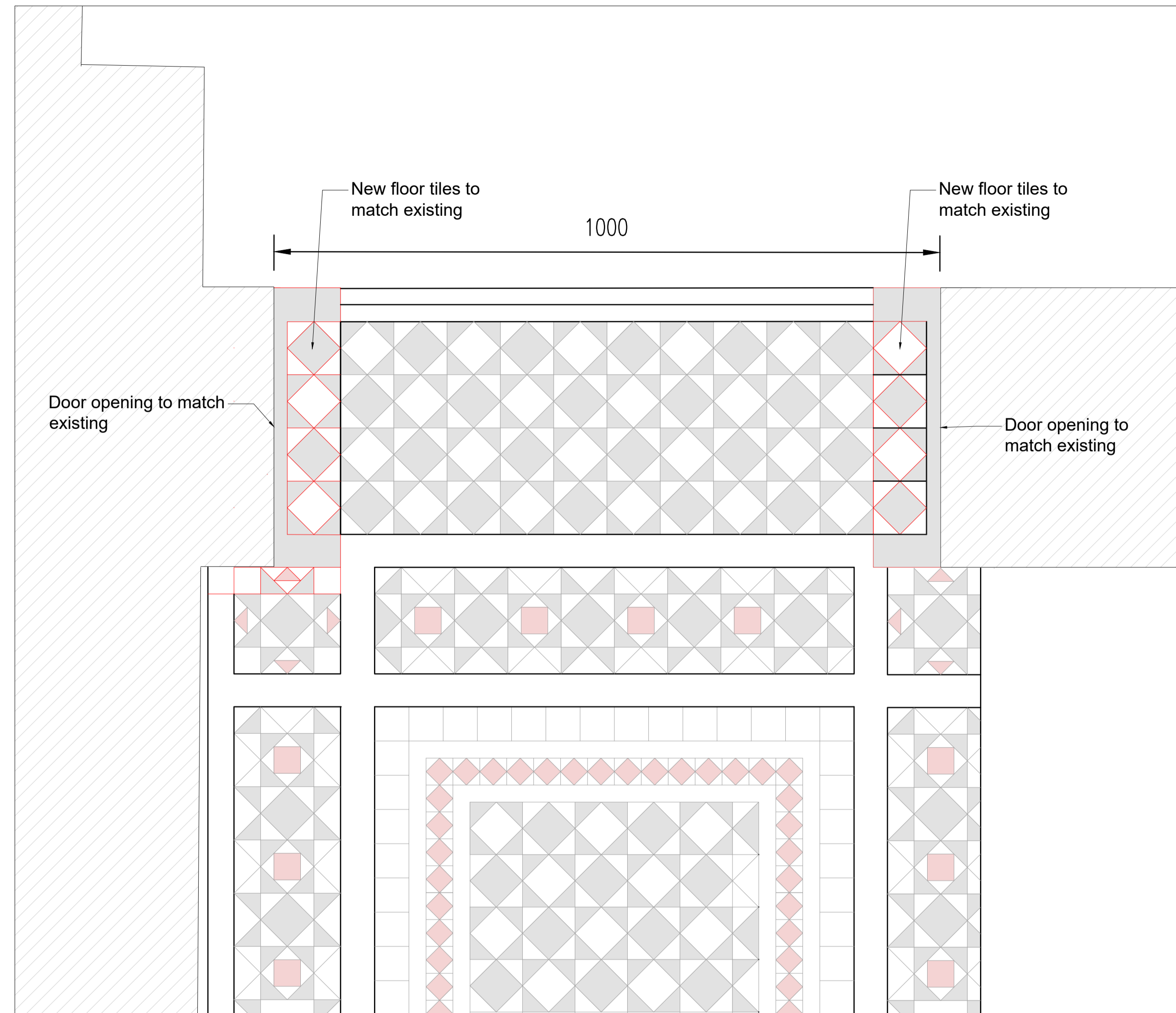
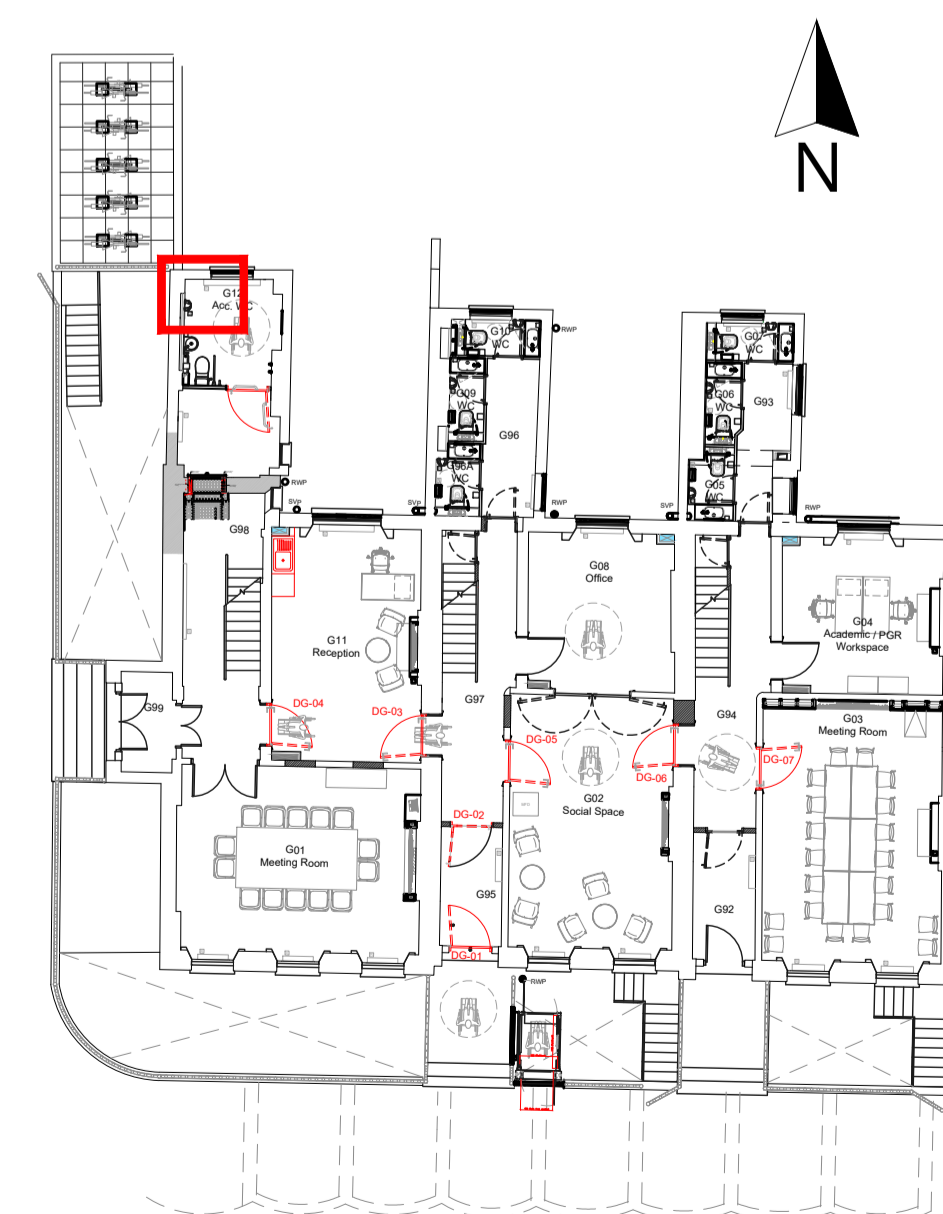


EXISTING Ground Floor \_Floor tiles details  
Scale 1:5



PROPOSED Ground Floor \_Floor tiles details  
Scale 1:5



Scale 1:20  
2 (metres)

Drawing Status: **PLANNING and LBC**

P02	Drawing amended	26/03/24	JM
P01	Issued for comments	21/03/24	JM
Rev	Description	Date	By

**Barker** MAJESTY HOUSE, AVENUE WEST  
SKYLINE 120, BRAINTREE  
ESSEX, CM77 7AA  
T: 01279 647111  
W: www.barker-associates.co.uk  
E: mail@barker-associates.co.uk

Client: UNIVERSITY COLLEGE LONDON

Project Title: Accessibility Works at  
Political Sciences School, 36-38 Gordon Square,  
London, WC1H 0PD

Drawing Title: Existing and Proposed  
Floor Tiles details

Drawn	Checked	Scale	Date
JM		1/5 @ A1	20/03/2024

**ARCHITECTURAL**

Drawing Number	Status	Revision	Project No
P24-0166-BA-A1-GF-DR-A-3205	S0	P02	P24-0166