
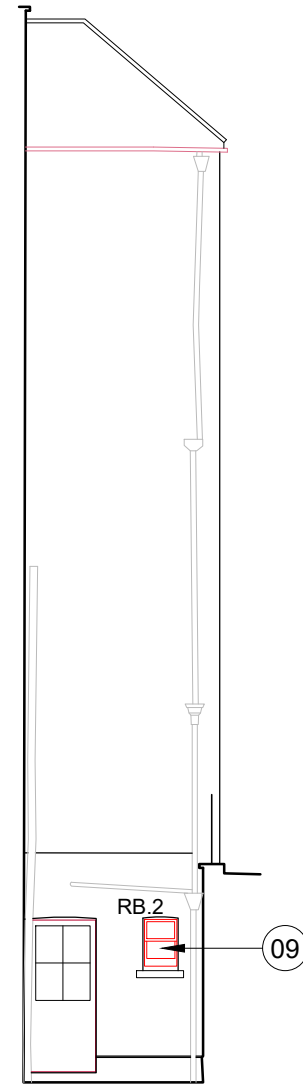
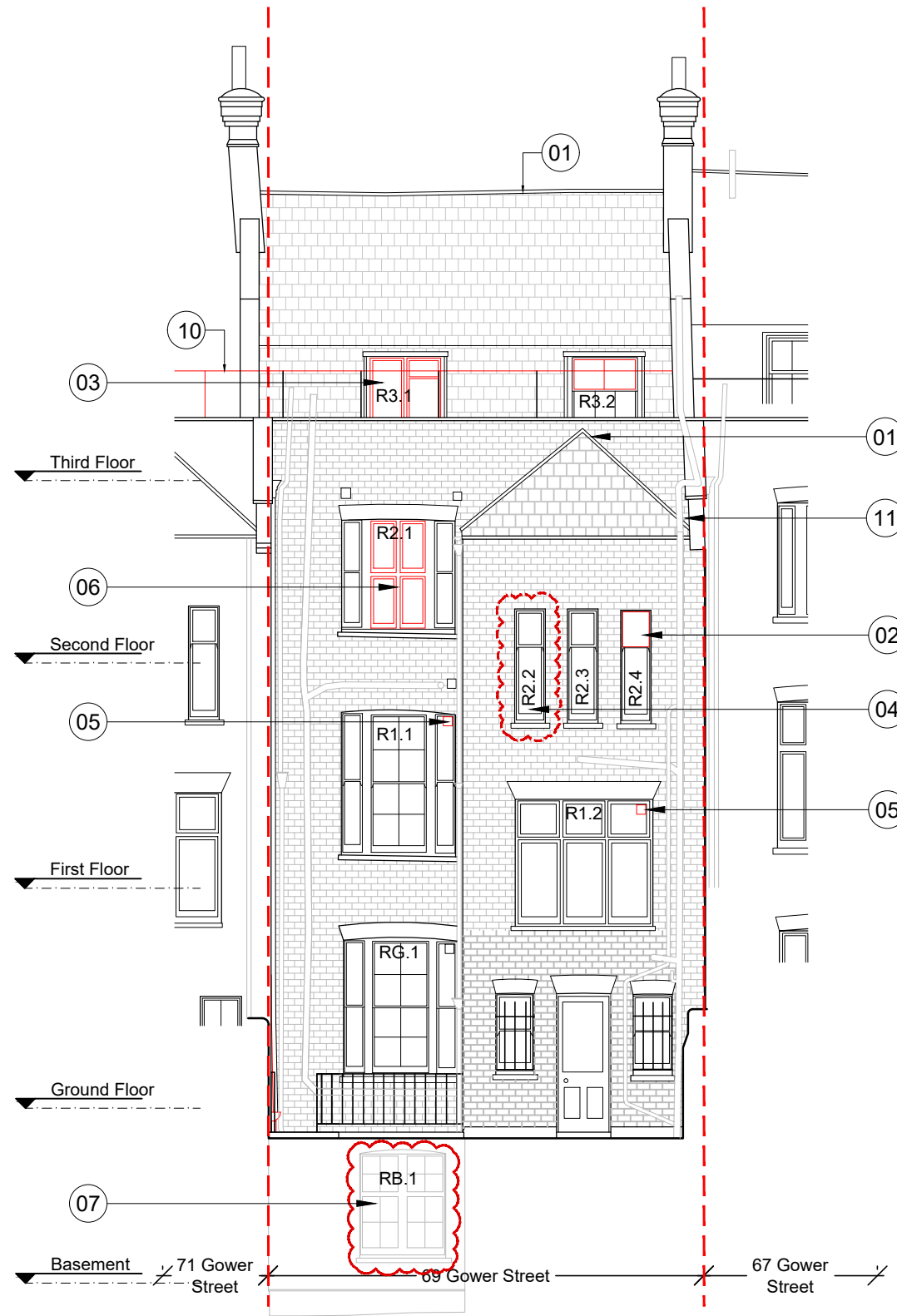


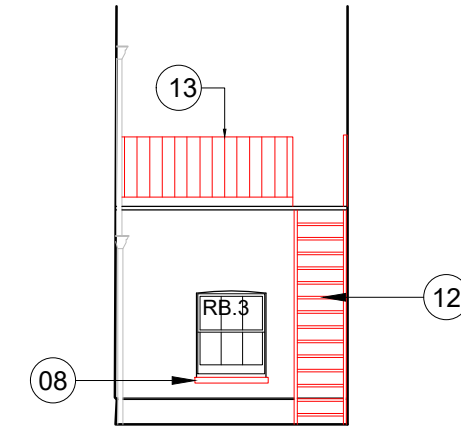
NOTES

 Indicative Site Boundary

- 01 Evidence of rolled lead ridge and hips
- 02 Upper pane boarded over
- 03 Low quality 20th Century dormer casement. Very poor condition
- 04 Window has been boarded over internally.
- 05 Mechanical extract through glazing
- 06 20th Century casement windows mismatched to Victorian sash window on floor below (R1.1). Fair condition.
- 07 Replacement casement window assessed to be 1920s/1930s. Modern ironmongery.
- 08 Cill rotten
- 09 Upper sash mismatched glass
- 10 Steel balustrades provides inadequate protection
- 11 Existing parapet gutter to hip falling away from gutter, remedial work required.
- 12 Rotten ladder
- 13 Rotten timber balustrade



Rear Lightwell



Rear Lightwell

