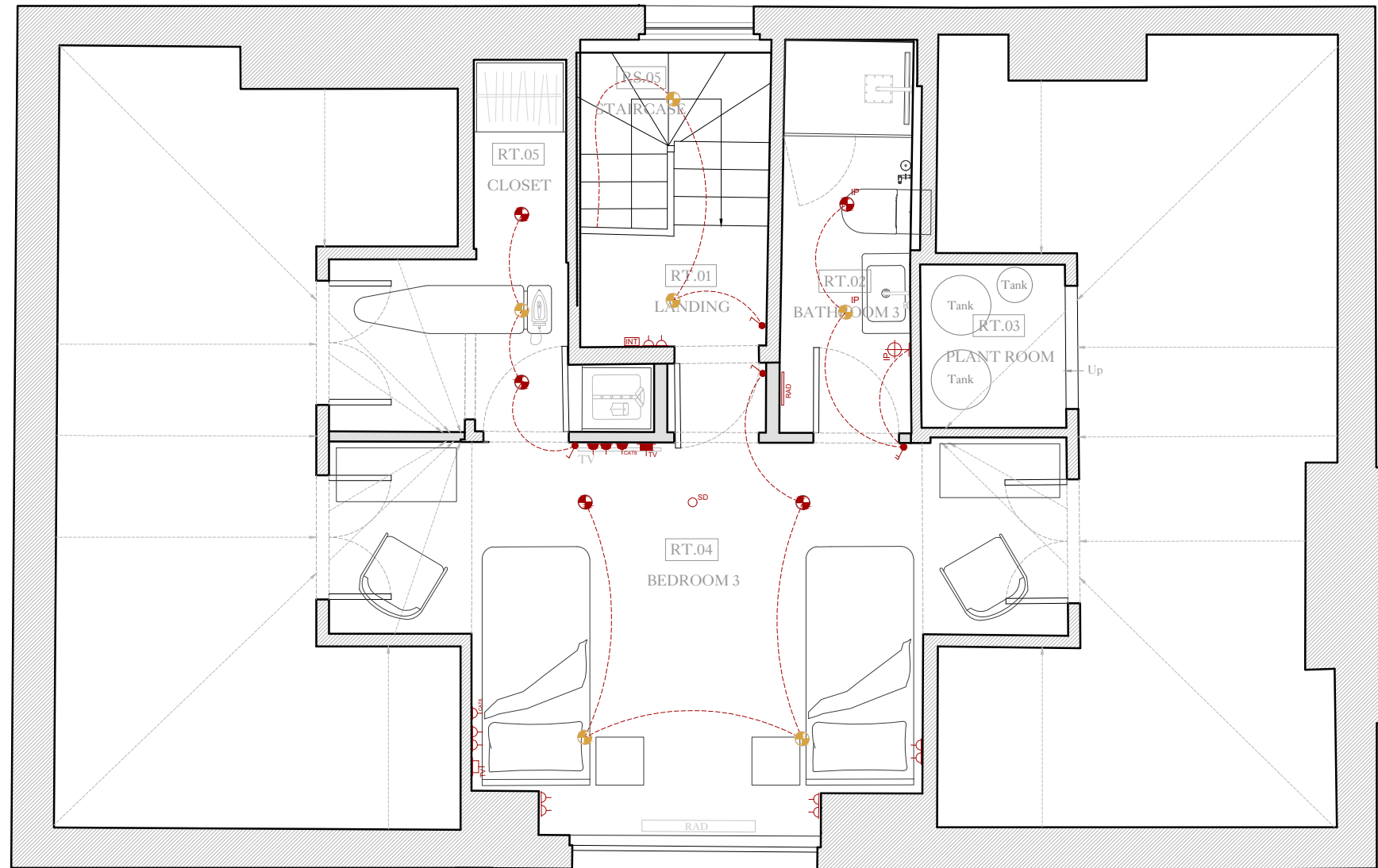


Rear wall bows out Ground to 3rd

WS 1.72
WH 2.87



WS 0.98
AS 0.98
AH 1.99

Front wall bows in Ground to 3rd

LEGEND - LIGHTING

LEGEND - ELECTRICAL

COLOUR LEGEND

	NEW POSITION/ NEW FITTING
	EXISTING POSITION/ NEW FITTING
	EXISTING TO BE MOVED or REMOVED

general notes
THIS DRAWING IS COPYRIGHT OF CLIFTON INTERIORS LTD. THIS DRAWING MUST BE READ IN CONJUNCTION WITH THE DESIGNER'S RISK ASSESSMENT, SPECIFICATION AND ALL OTHER RELEVANT DOCUMENTATION AND DRAWINGS. CLIFTON INTERIORS LTD ACCEPT NO LIABILITY FOR ANY EXPENSE, LOSS OR DAMAGE OF WHATSOEVER NATURE AND HOWEVER ARISING FROM ANY VARIATION MADE TO THIS DRAWING OR IN THE EXECUTION OF THE WORK TO WHICH IT RELATES WHICH HAS NOT BEEN REFERRED TO THEM AND THEIR APPROVAL OBTAINED.
DO NOT SCALE FROM THIS DRAWING OR THE COMPUTER DIGITAL DATA, ONLY FIGURED DIMENSIONS ARE TO BE USED.
IF IN DOUBT ASK.

purpose of issue
PLANNING

notes
* do not scale from this drawing.
* check all dimensions on site.

revisions
A - 11/10/2024

project name
5 PRINCE ALBERT ROAD

drawing title
THIRD FLOOR - SMALL POWER PLAN
proposed interior layout

scale 1:50@A3
date 23/09/2024
drawn by AG
checked RW

project ref. 2401
drawing no. 154
revision A

Clifton Interiors
Est. 1986

168 Regents Park Road
London NW1 8XN
020 7586 5533
www.cliftoninteriors.com