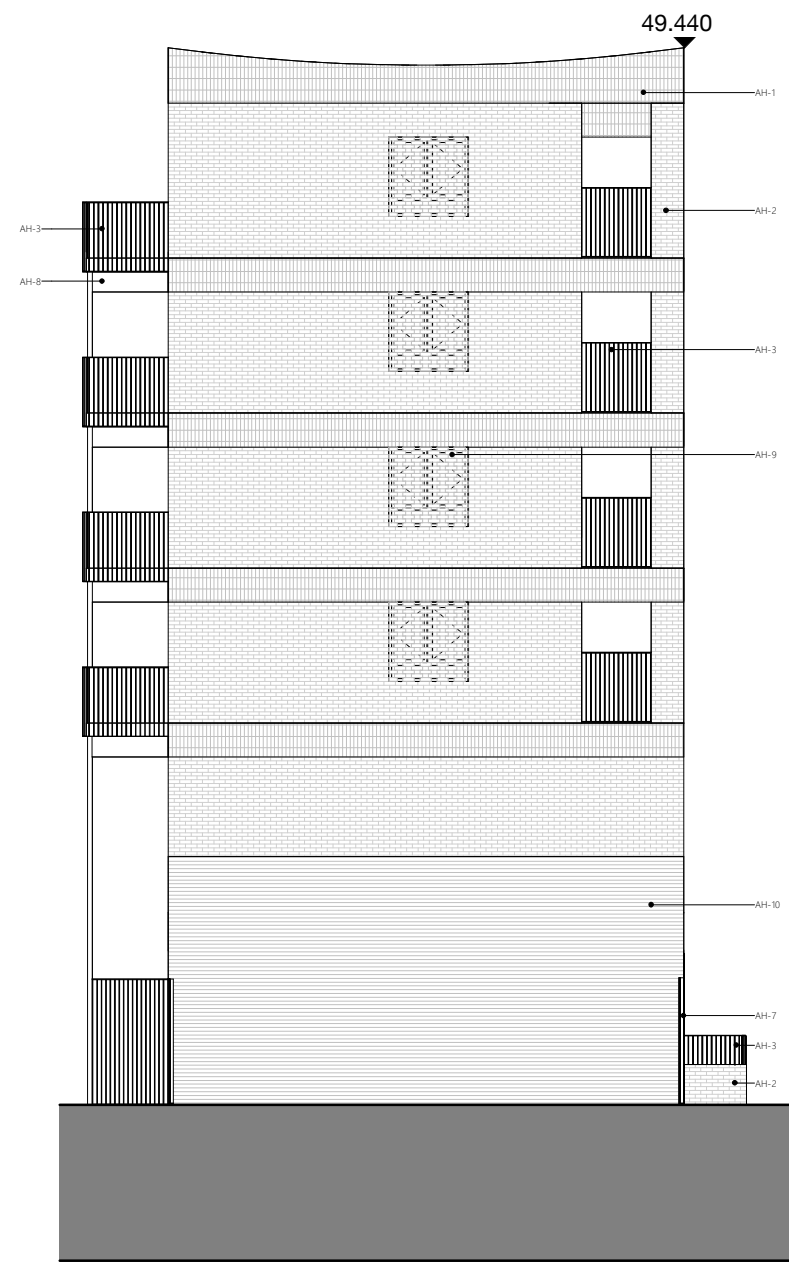




1 | PROPOSED ELE ARLINGTON ROAD
06204 | 1:150



2 | PROPOSED ELE C3 GABLE SOUTH
06204 | 1:150

NOTES:

SUPPLEMENTARY INFORMATION:
These drawings reflect the current position of the scheme development at RIBA Stage 2. They should be read in conjunction with the following information prepared by Morris+Company (MCO):
33-35 Jamestown Road Design and Access Statement
23054-MCO-XX-XX-DS-A-02017

These drawings should also be read in conjunction with the following information, prepared by other consultants:
- Structures Reports and Information (HDR Inc.)
- MEP Reports and Information (Wallace Whittle)
- Fire Report (Jensen Hughes)
- Acoustic Report (RBA Acoustics)
- Waste and Transport Report (cen)
- Energy Report (Wallace Whittle)
- Environmental and Sustainability Consultant (Wallace Whittle)
- Landscape Drawings and Specification (New Practice and Context Office)

EXTENTS AND BOUNDARIES:
These drawings combine survey and site information produced by others and as such should be verified for accuracy.

Existing site information, context, surrounding infrastructure, neighbouring building extents and plots are derived from 2D Surveys, produced by:
'Maltby Land Surveys Ltd'
Survey Date: 13.02.2024
Survey Reference: 22249-100-RevA

Planning Application Boundary

- Elevation Key**
- SH-1 Light brick stretcher bond
SH-2 Light brick woven
SH-3 Stringer/coping
SH-4 Glazed window/door, PPC metal frame
SH-5 Solid door with architectural metalwork, PPC metal frame
SH-6 Glazed ground floor opening with integrated doors, PPC metal frame
SH-7 Plant screen, perforated corrugated metal, colour to match brick below
SH-8 Light brick stretcher bond blind window
- AH-1 Light terracotta brick stretcher bond
AH-2 Light terracotta brick soldier bond
AH-3 Balustrade to balconies
AH-4 Glazed window/door, PPC metal frame
AH-5 Sculptural monolithic base with exposed aggregate
AH-6 Solid door with architectural metalwork, PPC metal frame
AH-7 Metal gate with circular feature
AH-8 Gallery deck, PPC metal
AH-9 Light terracotta hit and miss brick with AH-4 behind
AH-10 Light terracotta rusticated brick

P01

October 2024

Planning Submission

revision

date

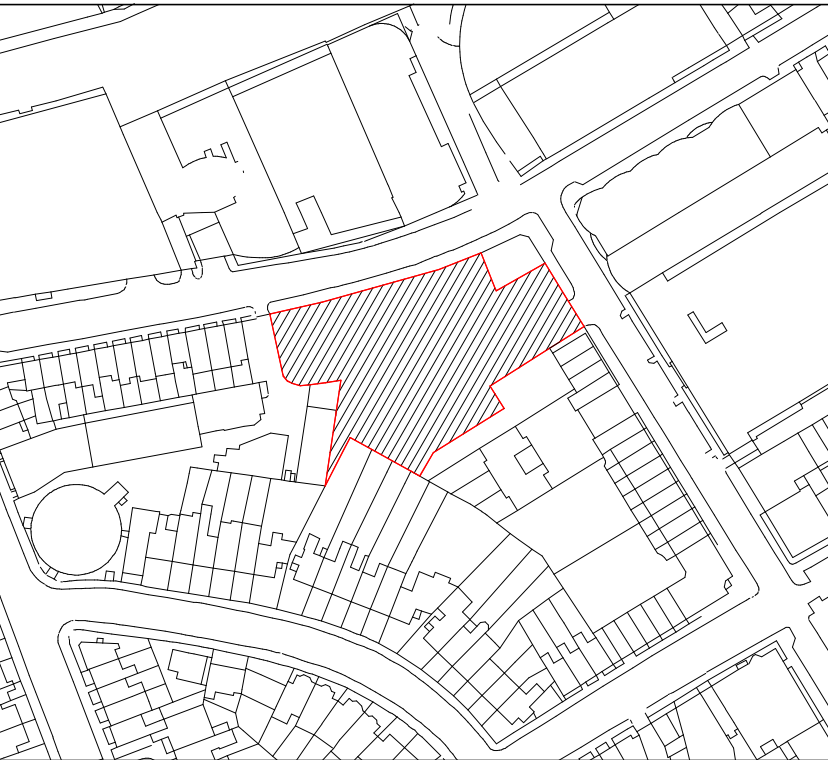
description

1500

3000

7500

15000 mm



MORRIS+COMPANY 215 Mare Street - London E8 3QE +44 (0)20 7566 7440 www.morrisandcompany						
- Do not scale from this drawing - All dimensions to be checked on site by the Contractor - And such dimensions to be their responsibility - Report all drawing errors and omissions to the Architect - All dimensions in millimeters unless noted otherwise - If in doubt ask Contract Administrator						
job title 33-35 JAMESTOWN ROAD						
drawing title / location PROPOSED ELEVATIONS C3 EAST + SOUTH GABLE						
status	S2 - FOR INFORMATION / REFERENCE					
scale	1 : 150 @ A1					
project	originator	funct.	spatial	form	disc.	number
23054	MCO	XX	ZZ	DR	A	06204