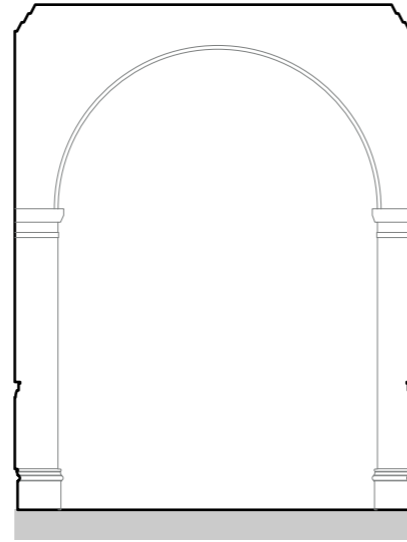
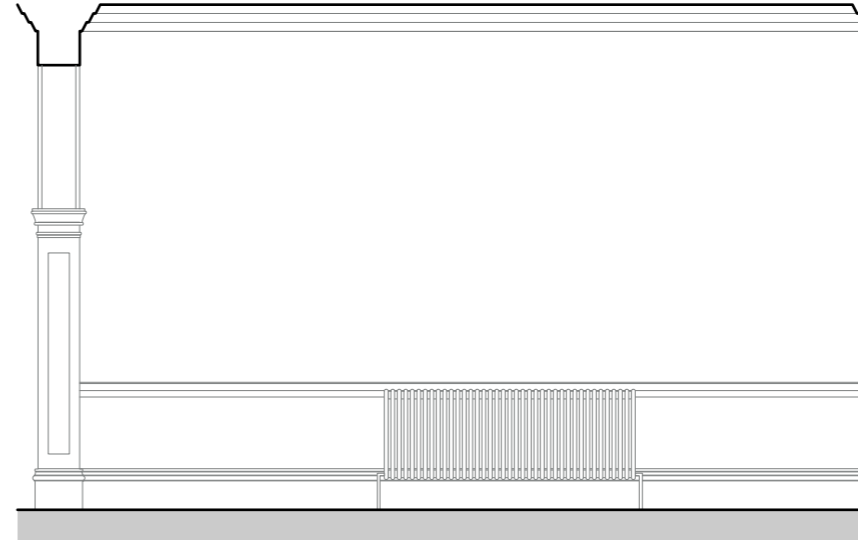


NOTE:

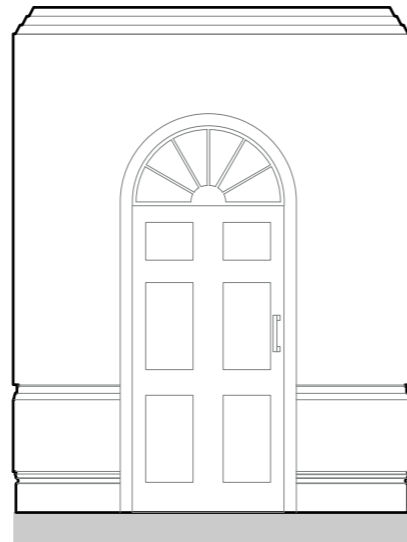
This drawing is illustrative and for information purposes only.



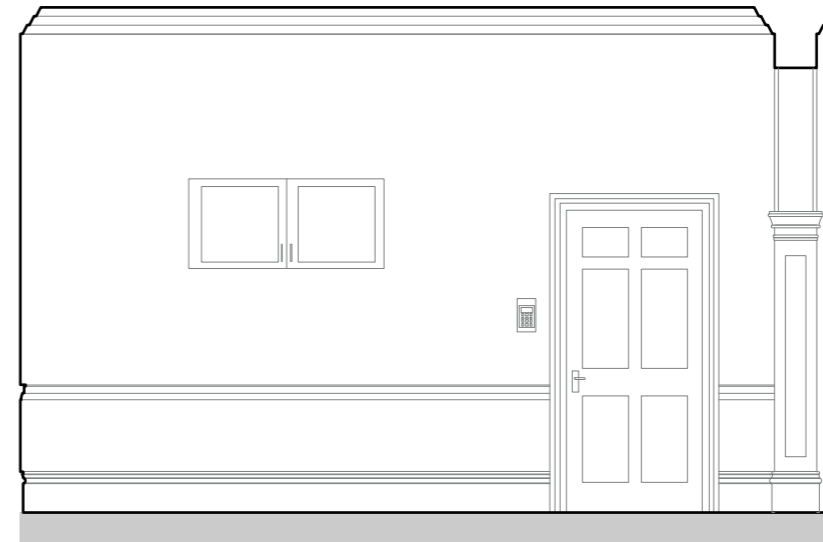
Internal Elevation 1
Scale 1:50



Internal Elevation 2
Scale 1:50

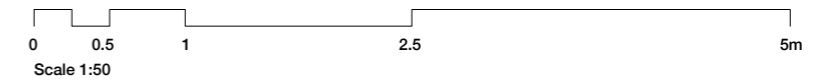
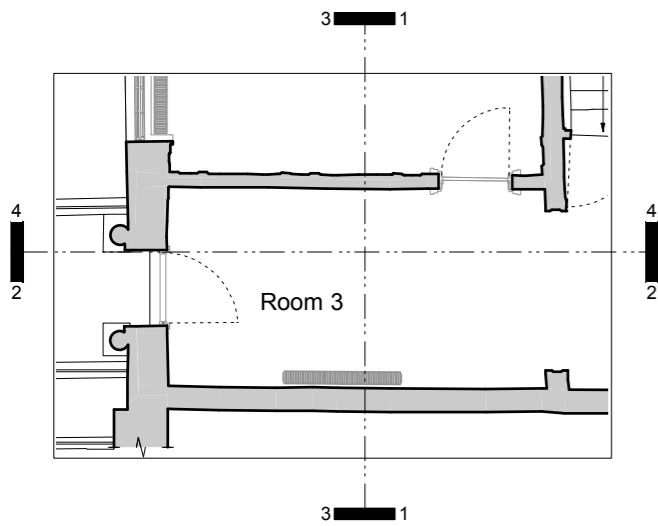


Internal Elevation 3
Scale 1:50



Internal Elevation 4
Scale 1:50

Key Plan: Ground Floor Room 3



Drawing No 344/EX/10.03	Rev No B	Client B & K Investments Limited	Project Title 7 John Street	Notes Preliminary set General revision Detail stamp removed
Date February 2024	Drawn JS	Project No 7 John Street	Revision A OR B	Date 15.02.2024 22.03.2024 05.11.2024
Glas Architects Mezzanine Offices John Trundle Court Barbican, London EC2Y 8DJ		Tel: +44 (0)20 7769 7600 Fax: +44 (0)20 763 7603 mail@glasarchitects.co.uk www.glasarchitects.co.uk		Notes Preliminary set General revision Detail stamp removed
Existing Internal Elevations - Room 3				
Information				