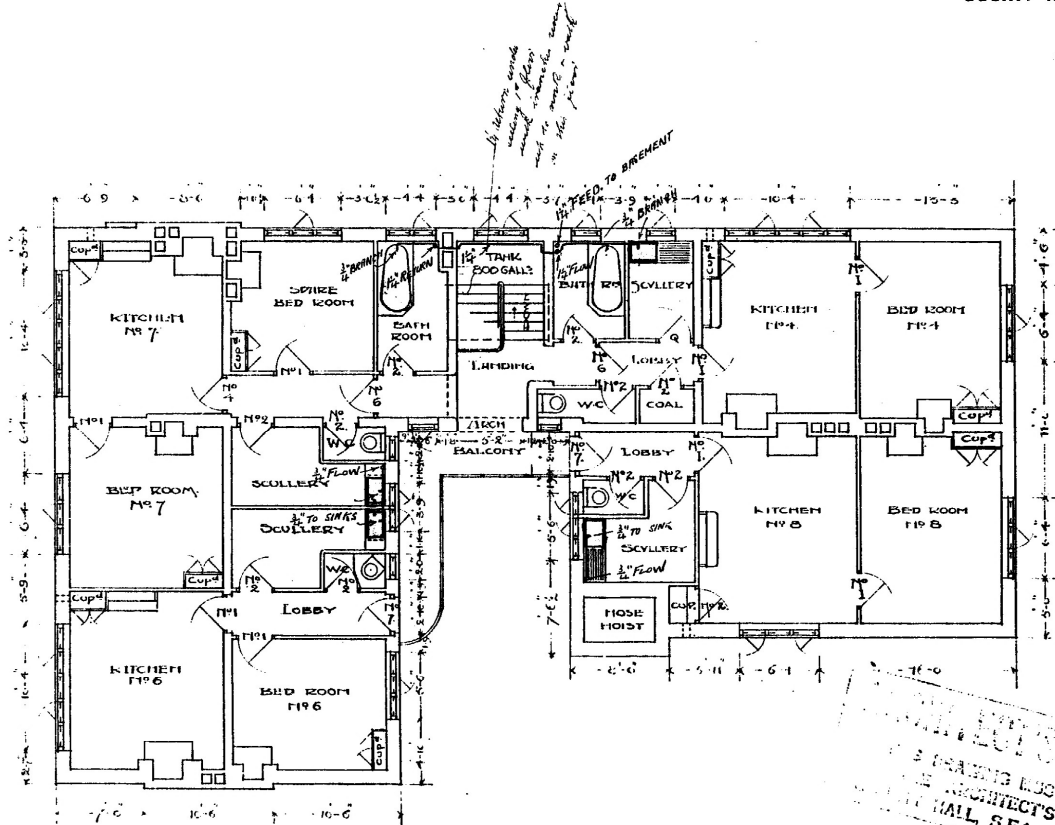


WEST HAMPSHIRE F.B.S.

NOTES AS ON GROUND PLAN, FOR HOT WATER SYSTEM.

45/9  
N<sup>o</sup>:10<sup>K</sup>

THIS DRAWING MUST BE RETURNED  
TO THE ARCHITECT'S PLAN ROOM,  
COUNTY HALL, S.E.1.



SECOND FLOOR PLAN



Original in GLRO.

LONDON COUNTY COUNCIL  
ARCHITECT'S RECORDS  
& PLAN ROOM  
27 APR 1953  
S.E.S. COUNTY HALL  
Reg. **A C I 703**

THIS DRAWING MUST BE RETURNED  
TO THE ARCHITECT'S PLAN ROOM,  
COUNTY HALL, S.E.1.

13 Sept. 900  
918  
W.S.P.

**4890**

W.S.P.  
12. September 53