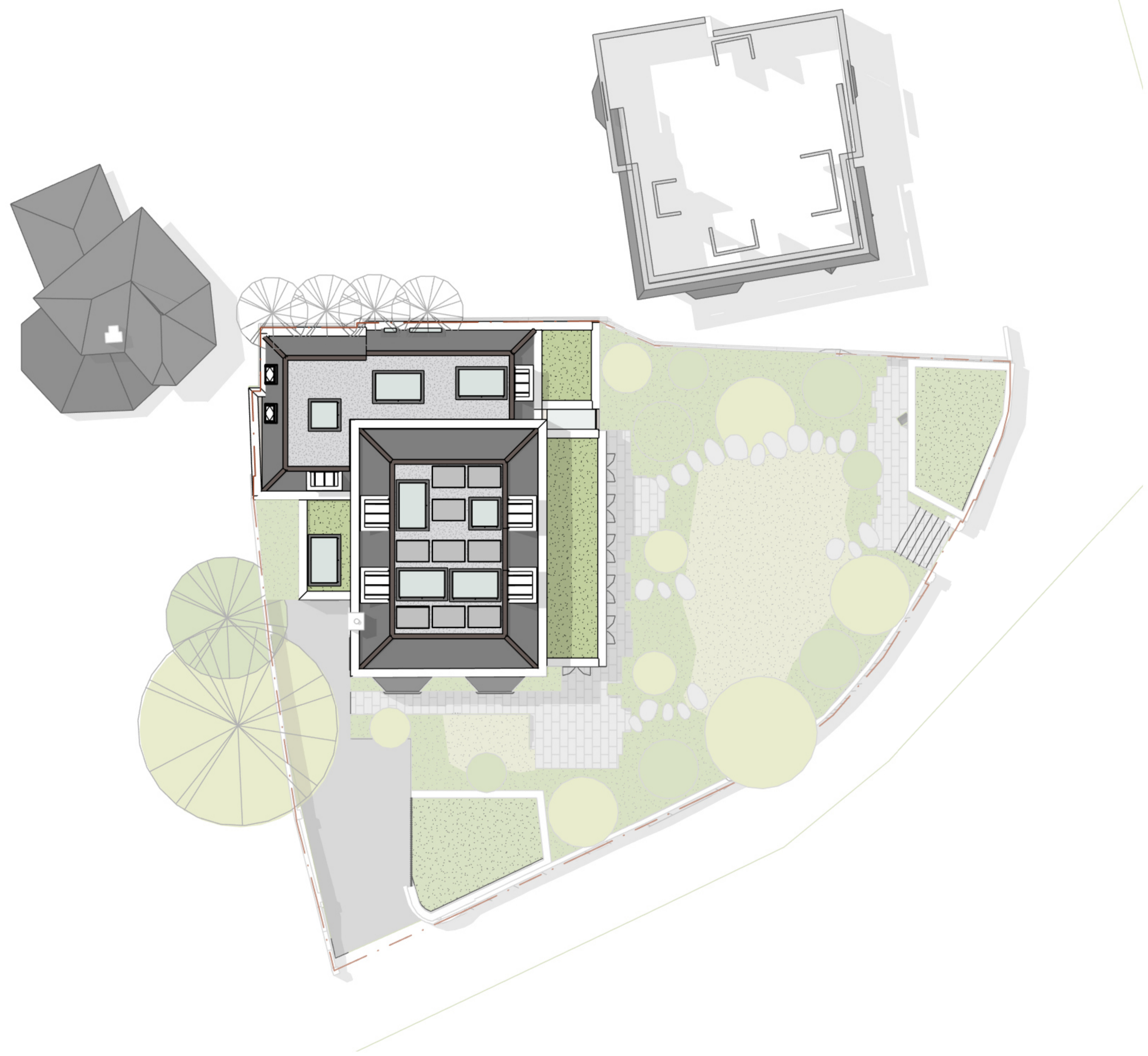


**General Notes**  
 This drawing is copyright of KSR architects. This drawing must be read in conjunction with the Designer's Risk Assessment, specification and all other relevant documentation and drawings.  
 KSR architects accept no liability for any expense, loss or damage of whatever nature and however arising from any variation made to this drawing or in the execution of the work to which it relates which has not been referred to them and their approval obtained.  
 Areas are based on un-checked survey and are approximate only. Do not scale from this drawing or the digital data, only figured dimensions are to be used. Refer to linear scale for guidance.  
 Check all dimensions on site prior to carrying out any works and advise any discrepancy.

**Legend**  
 - - - Existing Building Massing  
 - - - Site Boundary



Rev	Description	Date	By
B	Reduced Dormers	06/11/24	AB
A	Roof pitch reduction and sash window panes	23/05/24	AB

Status:

**Planning**

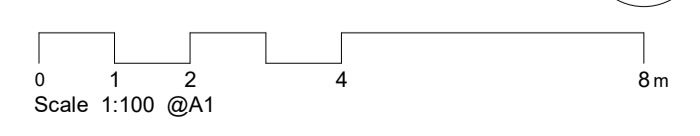
**KSR ARCHITECTS & INTERIOR DESIGNERS**  
 KSR architects LLP | @ksrarchitects  
 14 Greenland Street | London NW11 0ND | t: +44 (0)20 7882 5000 | www.ksrarchitects.com

Project:  
**12A Church Row**

Drawing Title:  
**Planning Plans - Roof**

Date of first issue: **25/06/24** Scale: **1:100 @A1**  
 Drawn By: **AB** Checked By: **DC** © KSR Architects

Drawing No: **23024-P1-114** Rev: **B**



**1 115. Proposed Roof Plan**  
 1:100