

This drawing was prepared for the purposes indicated below and is to be read as preliminary unless otherwise stated.
Copyright: This drawing is copyright of Space 120 Architects and is issued on the terms that it will not be reproduced or copied in whole or any part nor will any information be furnished from it without their consent. Space 120 Architects accepts no liability for the unauthorised use of drawings and should be notified of drawings developed from this source.
Scaling: This drawing is representative of the building or site and the intended works. Contractors should refer to the figured dimensions and should not scale off any part of printed or electronically issued

versions of this drawing. Contractors should carry out site surveys to confirm dimensions and details of existing structure required for the setting out of their works prior to making shop drawings or otherwise setting-out the works.
Electronic issue: Space 120 Architects accepts no responsibility for omissions from or discrepancies in appearance of the drawings arising from transfer in electronic format. Contractors must refer to the printed issue of this drawing for verification of the Architects intentions and ensure that all information contained for use is current and should not rely on printed scales if the drawing has been issued in PDF format.

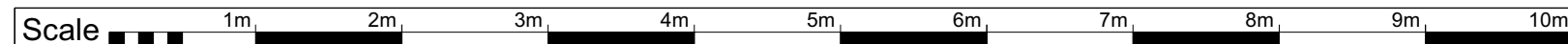
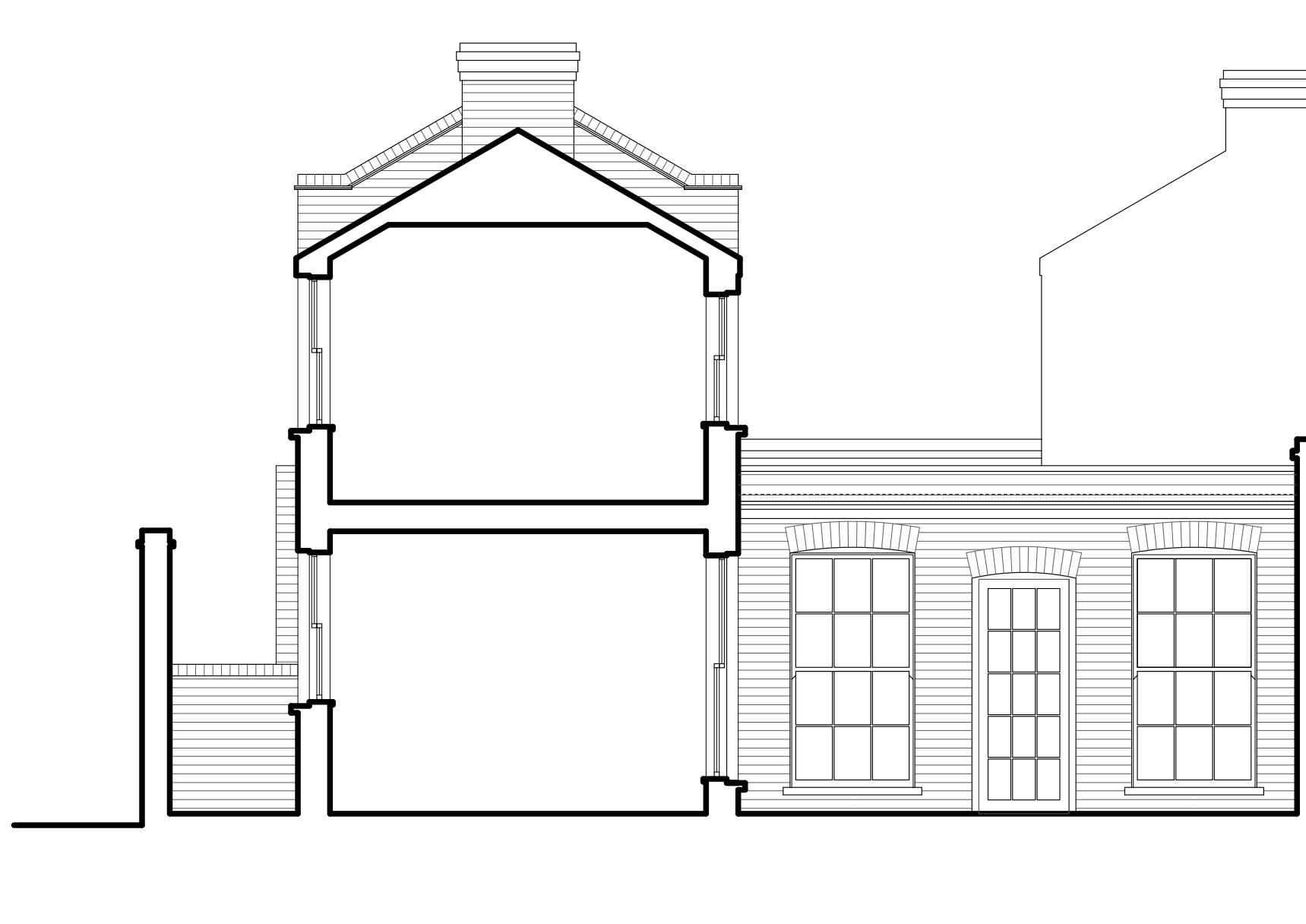


REVISIONS			

Job name	3 College Lane NW5 1BJ		
Drawing title	Existing Ground Floor Plan		
Drawing Number	2172	101	Rev / /
Date of issue	24.10.24		
Scale	1:50@A3		
Purpose of issue	Preliminary		

SPACE 120
architects

120 Winchester Road
Highams Park
London E4 9JP
07745 895 216
space120@live.com



This drawing was prepared for the purposes indicated below and is to be read as preliminary unless otherwise stated.
Copyright: This drawing is copyright of Space 120 Architects and is issued on the terms that it will not be reproduced or copied in whole or any part nor will any information be furnished from it without their consent. Space 120 Architects accepts no liability for the unauthorised use of drawings and should be notified of drawings developed from this source.
Scaling: This drawing is representative of the building or site and the intended works. Contractors should refer to the figured dimensions and should not scale off any part of printed or electronically issued

versions of this drawing. Contractors should carry out site surveys to confirm dimensions and details of existing structure required for the setting out of their works prior to making shop drawings or otherwise setting-out the works.
Electronic issue: Space 120 Architects accepts no responsibility for omissions from or discrepancies in appearance of the drawings arising from transfer in electronic format. Contractors must refer to the printed issue of this drawing for verification of the Architects intentions and ensure that all information contained for use is current and should not rely on printed scales if the drawing has been issued in PDF format.

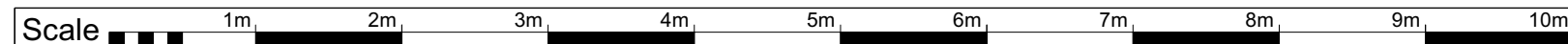


REVISIONS			

Job name	3 College Lane NW5 1BJ		
Drawing title	Existing Section 1		
Drawing Number	2172	102	Rev /
Date of issue	24.10.24		
Scale	1:50@A3		
Purpose of issue	Preliminary		

SPACE 120
architects

120 Winchester Road
Highams Park
London E4 9JP
07745 895 216
space120@live.com



This drawing was prepared for the purposes indicated below and is to be read as preliminary unless otherwise stated.
Copyright: This drawing is copyright of Space 120 Architects and is issued on the terms that it will not be reproduced or copied in whole or any part nor will any information be furnished from it without their consent. Space 120 Architects accepts no liability for the unauthorised use of drawings and should be notified of drawings developed from this source.
Scaling: This drawing is representative of the building or site and the intended works. Contractors should refer to the figured dimensions and should not scale off any part of printed or electronically issued

versions of this drawing. Contractors should carry out site surveys to confirm dimensions and details of existing structure required for the setting out of their works prior to making shop drawings or otherwise setting-out the works.
Electronic issue: Space 120 Architects accepts no responsibility for omissions from or discrepancies in appearance of the drawings arising from transfer in electronic format. Contractors must refer to the printed issue of this drawing for verification of the Architects intentions and ensure that all information contained for use is current and should not rely on printed scales if the drawing has been issued in PDF format.

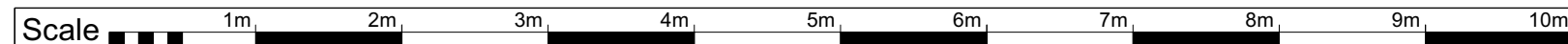
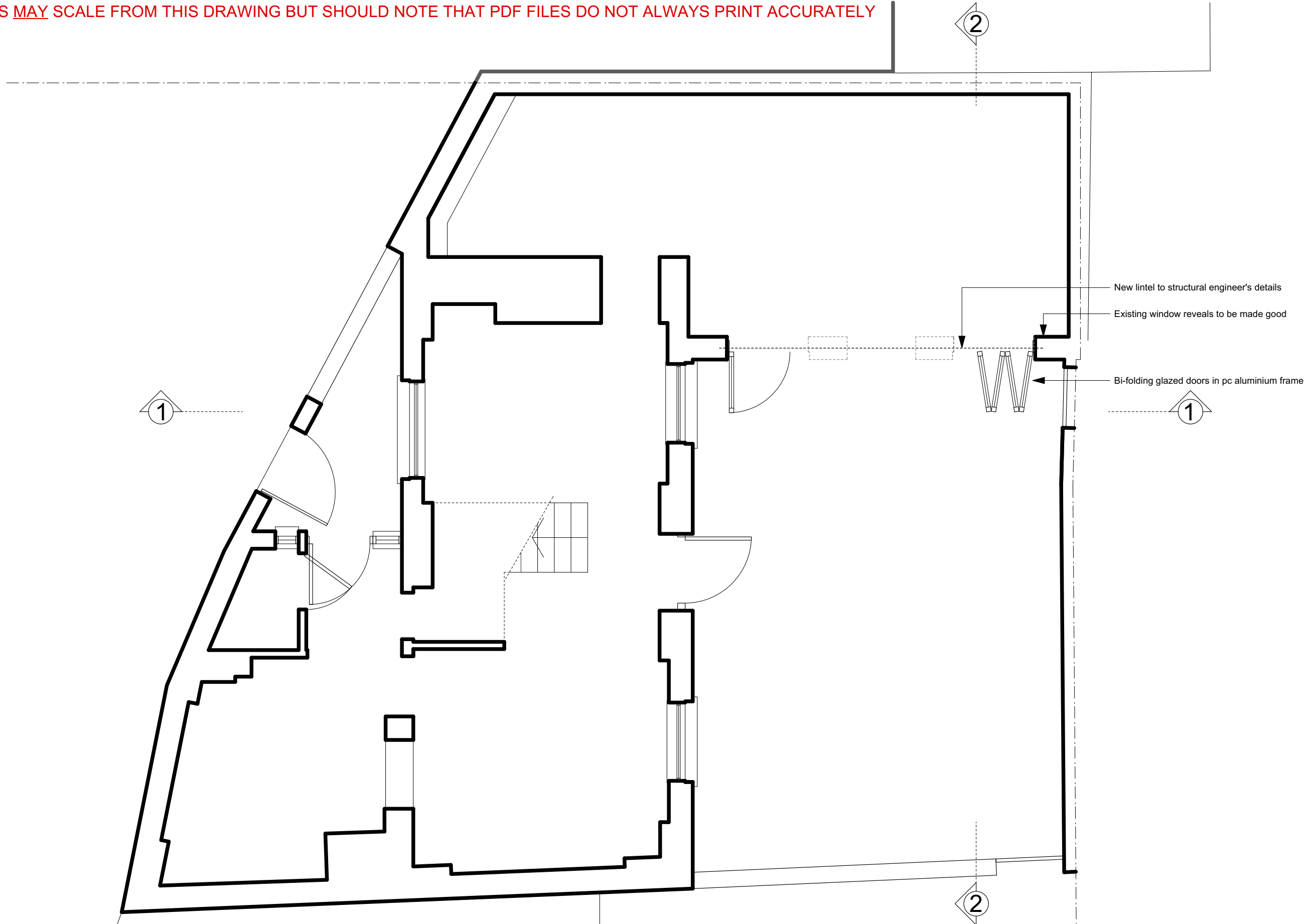


REVISIONS			

Job name	3 College Lane NW5 1BJ		
Drawing title	Existing Section 2		
Drawing Number	2172	103	Rev
Date of issue	24.10.24		
Scale	1:50@A3		
Purpose of issue	Preliminary		

SPACE 120
architects

120 Winchester Road
Highams Park
London E4 9JP
07745 895 216
space120@live.com



This drawing was prepared for the purposes indicated below and is to be read as preliminary unless otherwise stated.
Copyright: This drawing is copyright of Space 120 Architects and is issued on the terms that it will not be reproduced or copied in whole or any part nor will any information be furnished from it without their consent. Space 120 Architects accepts no liability for the unauthorised use of drawings and should be notified of drawings developed from this source.
Scaling: This drawing is representative of the building or site and the intended works. Contractors should refer to the figured dimensions and should not scale off any part of printed or electronically issued

versions of this drawing. Contractors should carry out site surveys to confirm dimensions and details of existing structure required for the setting out of their works prior to making shop drawings or otherwise setting-out the works.
Electronic issue: Space 120 Architects accepts no responsibility for omissions from or discrepancies in appearance of the drawings arising from transfer in electronic format. Contractors must refer to the printed issue of this drawing for verification of the Architects intentions and ensure that all information contained for use is current and should not rely on printed scales if the drawing has been issued in PDF format.

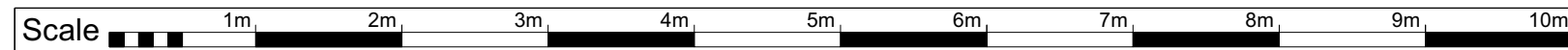
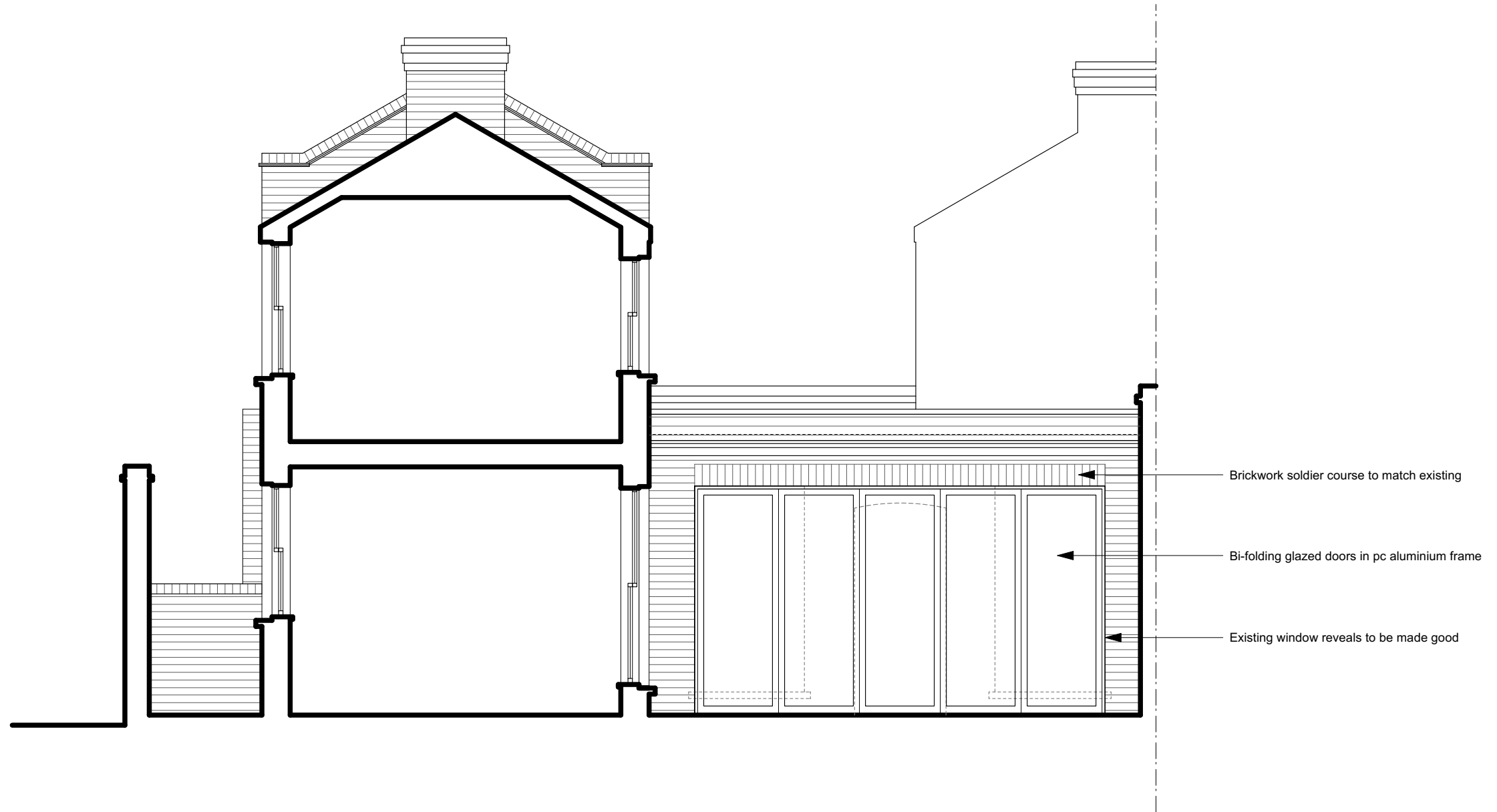


REVISIONS			

Job name	3 College Lane NW5 1BJ		
Drawing title	Proposed Ground Floor Plan		
Drawing Number	2172	P01	Rev /
Date of issue	29.10.24		
Scale	1:50@A3		
Purpose of issue	Preliminary		

SPACE 120
architects

120 Winchester Road
Highams Park
London E4 9JP
07745 895 216
space120@live.com



This drawing was prepared for the purposes indicated below and is to be read as preliminary unless otherwise stated.
Copyright: This drawing is copyright of Space 120 Architects and is issued on the terms that it will not be reproduced or copied in whole or any part nor will any information be furnished from it without their consent. Space 120 Architects accepts no liability for the unauthorised use of drawings and should be notified of drawings developed from this source.
Scaling: This drawing is representative of the building or site and the intended works. Contractors should refer to the figured dimensions and should not scale off any part of printed or electronically issued

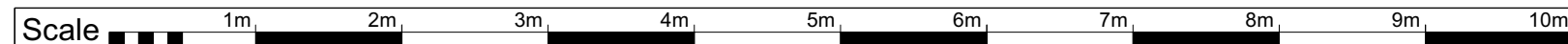
versions of this drawing. Contractors should carry out site surveys to confirm dimensions and details of existing structure required for the setting out of their works prior to making shop drawings or otherwise setting-out the works.
Electronic issue: Space 120 Architects accepts no responsibility for omissions from or discrepancies in appearance of the drawings arising from transfer in electronic format. Contractors must refer to the printed issue of this drawing for verification of the Architects intentions and ensure that all information contained for use is current and should not rely on printed scales if the drawing has been issued in PDF format.



REVISIONS				Job name	3 College Lane NW5 1BJ
				Drawing title	Proposed Section 1
				Drawing Number	2172 P02 Rev /
				Date of issue	29.10.24
				Scale	1:50@A3
				Purpose of issue	Preliminary

SPACE 120
architects

120 Winchester Road
Highams Park
London E4 9JP
07745 895 216
space120@live.com



This drawing was prepared for the purposes indicated below and is to be read as preliminary unless otherwise stated.
Copyright: This drawing is copyright of Space 120 Architects and is issued on the terms that it will not be reproduced or copied in whole or any part nor will any information be furnished from it without their consent. Space 120 Architects accepts no liability for the unauthorised use of drawings and should be notified of drawings developed from this source.
Scaling: This drawing is representative of the building or site and the intended works. Contractors should refer to the figured dimensions and should not scale off any part of printed or electronically issued

versions of this drawing. Contractors should carry out site surveys to confirm dimensions and details of existing structure required for the setting out of their works prior to making shop drawings or otherwise setting-out the works.
Electronic issue: Space 120 Architects accepts no responsibility for omissions from or discrepancies in appearance of the drawings arising from transfer in electronic format. Contractors must refer to the printed issue of this drawing for verification of the Architects intentions and ensure that all information contained for use is current and should not rely on printed scales if the drawing has been issued in PDF format.



REVISIONS			

Job name	3 College Lane NW5 1BJ		
Drawing title	Proposed Section 1		
Drawing Number	2172	203	Rev /
Date of issue	29.10.24		
Scale	1:50@A3 /		
Purpose of issue	Preliminary		

SPACE 120
architects

120 Winchester Road
Highams Park
London E4 9JP
07745 895 216
space120@live.com