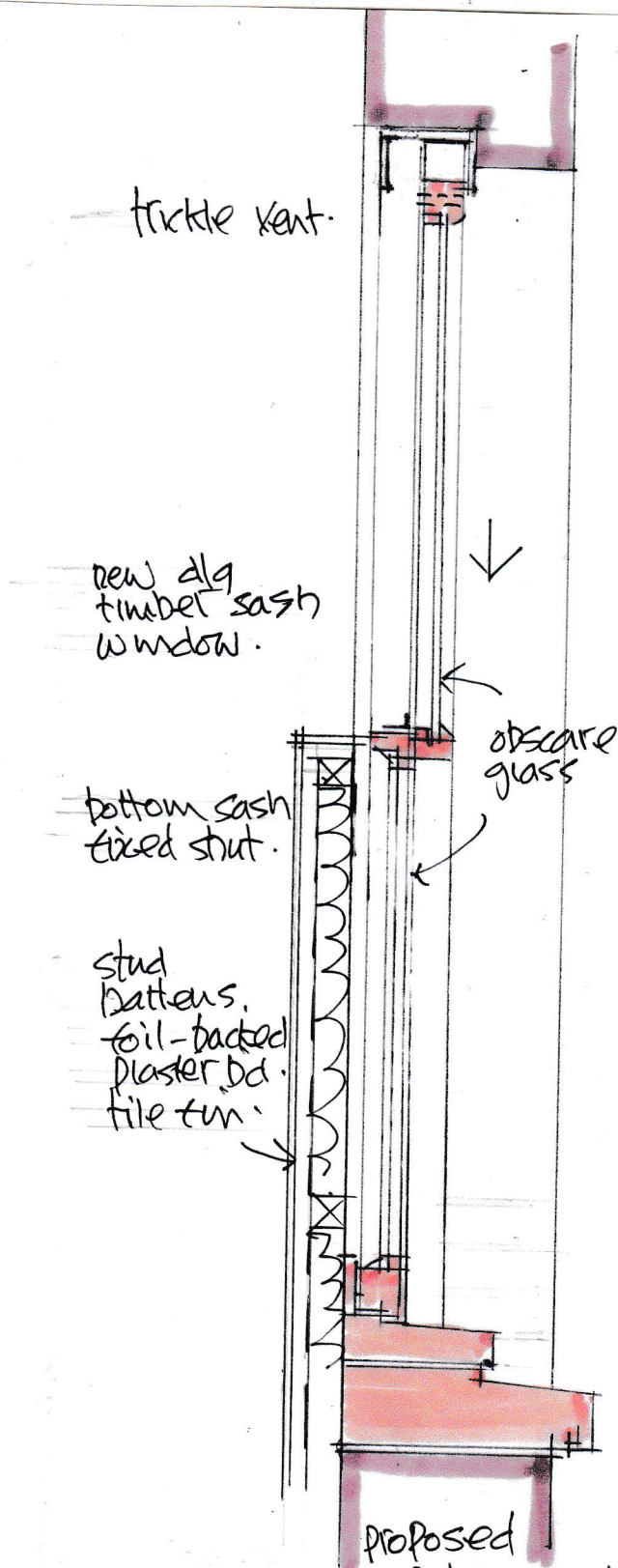


ext. br. soldier arch retained

existing window section
scale 1:10



trickle vent.

new d/g timber sash window.

bottom sash fixed shut.

stud batten, foil-backed plaster, tile fin.

obscure glass

proposed window section
scale 1:10

10 Mackenison Road HW3 2LT

aug. no. 3570/4 A
rev. A. Nov. 4. 24 proposed section revised.