

Window removed + replaced with new d/g timber sash window

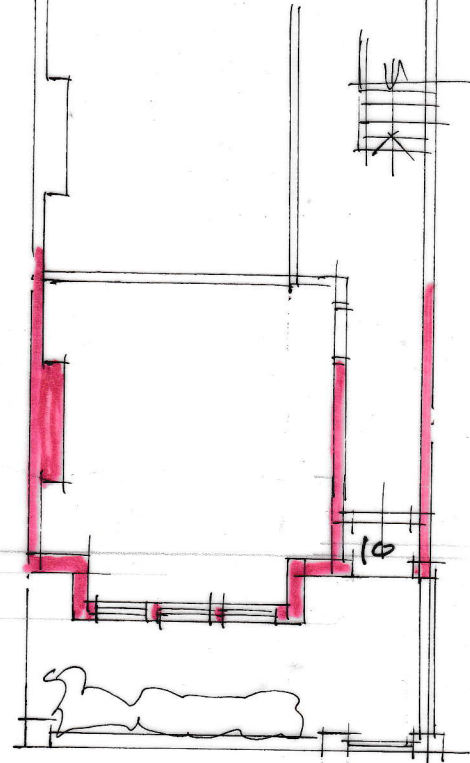
bath removed, new shower

new sh.

bathroom

bedroom

FIRST FLOOR PLAN



GROUND FLOOR PLAN

10 Mackeson Road NW3 2LT

Mackeson Road.

proposed plans:

dwg. no. 3570/2A august, 24  
REV. A: NOV. 4, 24, window replaced in timber, sash type. d/g.

