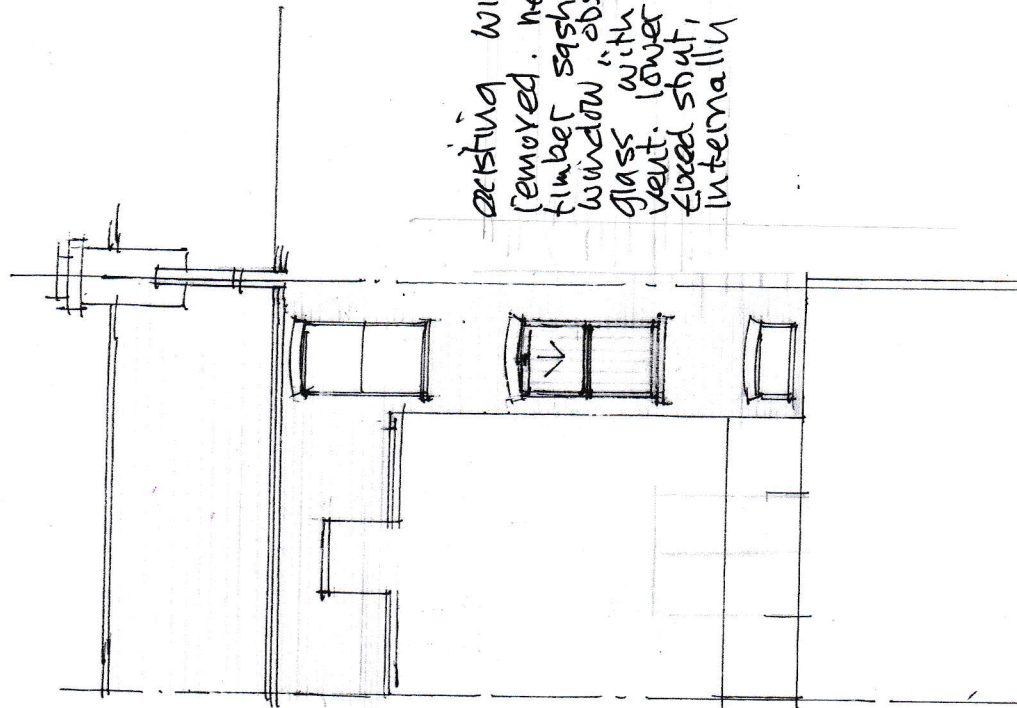


EXISTING REAR ELEVATION



existing window removed. new d/o timber sash window with obscure glass with trickle vent. lower sash fixed shut, stuck internally + tiled.

PROPOSED REAR ELEVATION

10 Mackeson Road HW3 2LT
 existing + proposed rear elevations:
 dwg. no. 3570/3 A august, 24
 Rev. A Nov. 4, 24. Sash window replaced in timber, bottom sash fixed. obscure glass.

