

General Notes

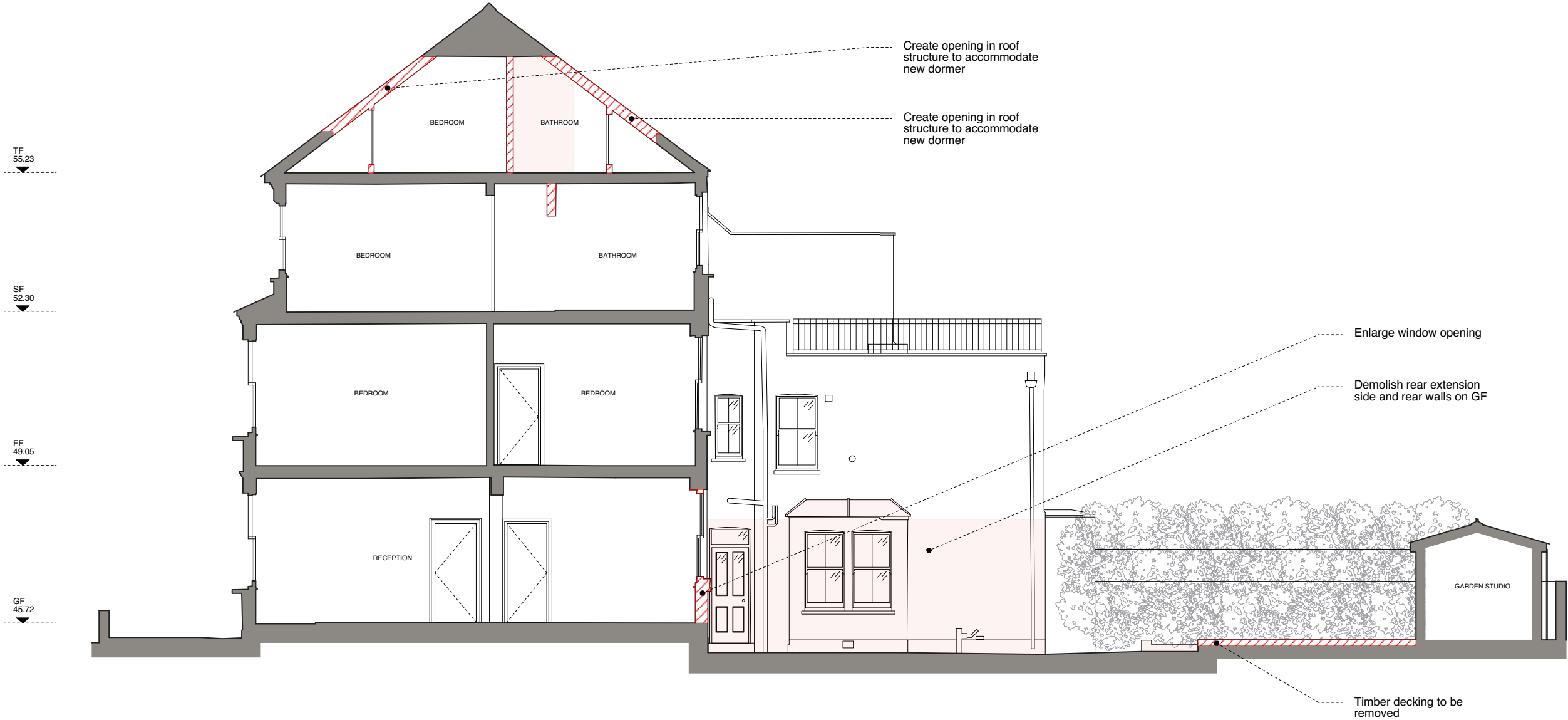
- All dimensions to be verified on site
- To be read in conjunction with all relevant documents
- In the event of discrepancy notify the Architect immediately
- Note that not all elements of the drawing may be to exact scale. All dimensions not explicitly marked should be verified either on site or with the Architect
- All steel structural elements to be finished with intumescent coating. 30 minutes fire resistance. For all structural elements and connection see SE drawings.
- This document is copyright of Hugh Cullum Architects Ltd

Issue Status

- SK Sketch	- T Tender	- P Permissions
- D Design	- E Existing Condition	- C Contract

Revisions

rev	note	date	(drawn by/checked by)
()	: Issued for Planning	30. 10. 24	(TS/HC)



Indicates areas of demolition shown in elevation

Indicates areas of demolition shown in section



As Existing - Long Section B-B