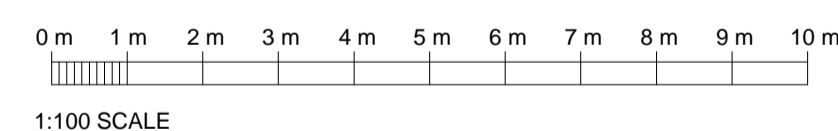
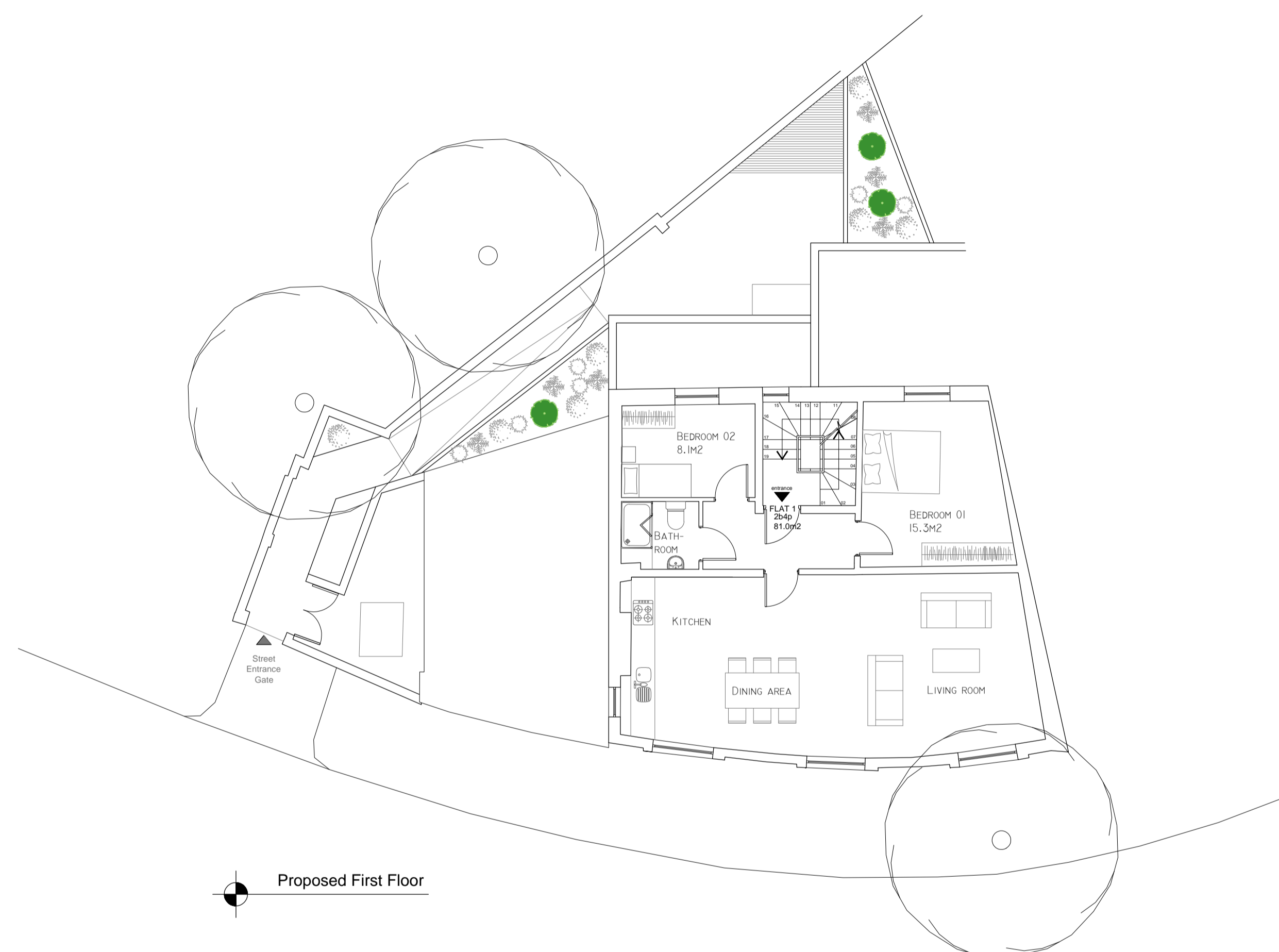


G.I.A of flat - 81m²
 Bed 01 - 15.3m²
 Bed 02 - 8.1m²



Rev	Date	Comments
Client Mulberry One Capital Ltd		
Project The Magdala 2A South Hill Park London NW3 2SB		
Title Proposed First Floor Plan		
Project No.	Date	
4354	OCT 23	
Drawing No.	Revision	
PD05	-	
Scale	Drawn	GH
As shown	Check	JH

PLANNING