

**Imperial London Family of Hotels**

1417/5/2 – Planning Drawing List

**2023/4729/P Condition 8**

Drawings submitted for consideration:

Reference	Revision	Title
<b>Cube Design Ltd Drawings:</b>		
1417-P137	A	Photovoltaic Panels Provisions – Location Plan
1417-P138	A	Photovoltaic Panels Provisions – Existing Roof Plan
1417-P139	A	Photovoltaic Panels Provisions – Proposed Roof Plan

**Method Consulting Drawings:**

1992LIH-MET-00-R10-DR-E-6214	A4-C02	Small Power & Data Services - Roof Level
------------------------------	--------	--

KEY

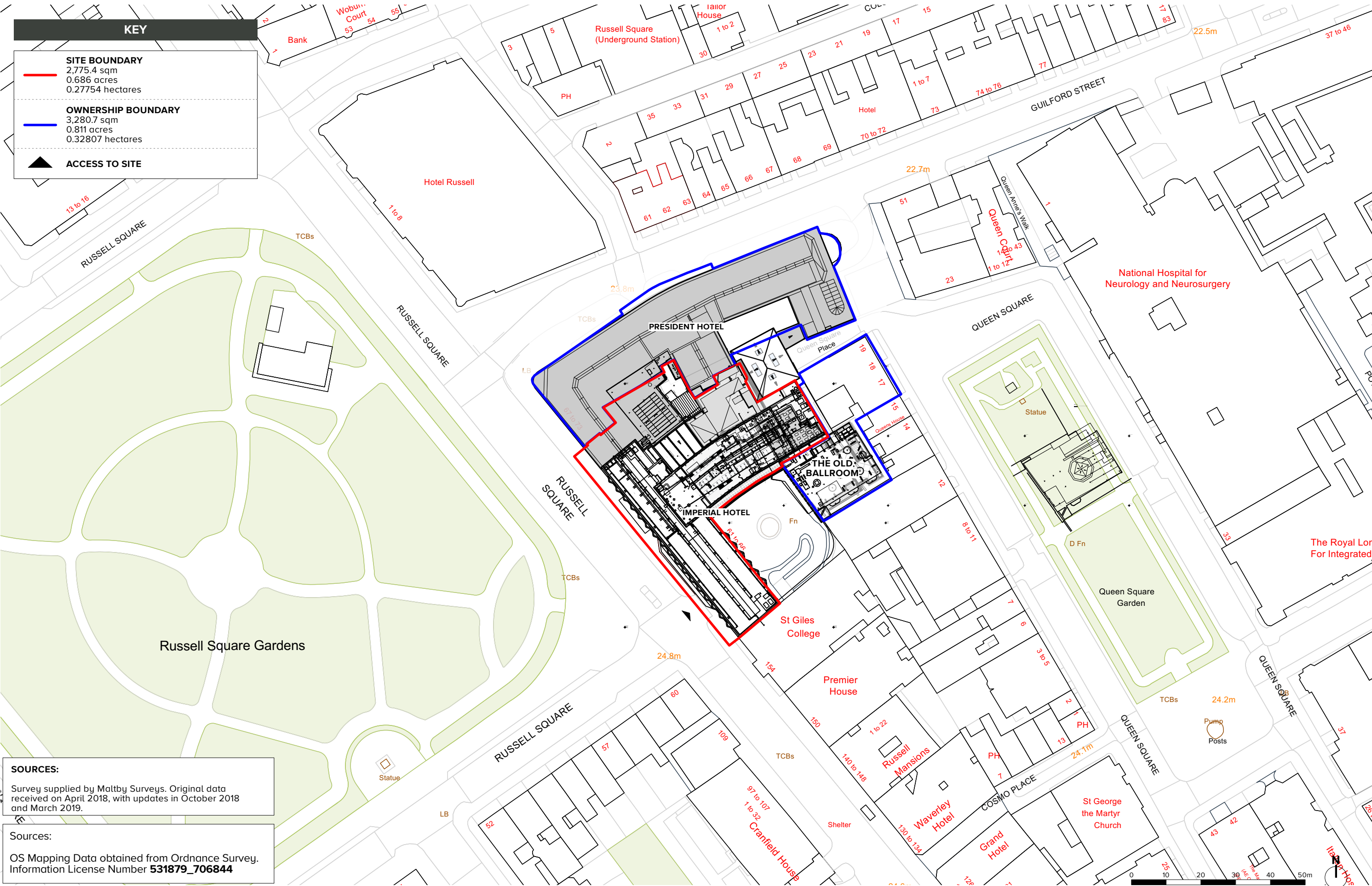
SITE BOUNDARY

2,775.4 sqm  
0.686 acres  
0.27754 hectares

OWNERSHIP BOUNDARY

3,280.7 sqm  
0.811 acres  
0.32807 hectares

ACCESS TO SITE



SOURCES:

Survey supplied by Maltby Surveys. Original data received on April 2018, with updates in October 2018 and March 2019.

Sources:

OS Mapping Data obtained from Ordnance Survey. Information License Number **531879\_706844**

KEY

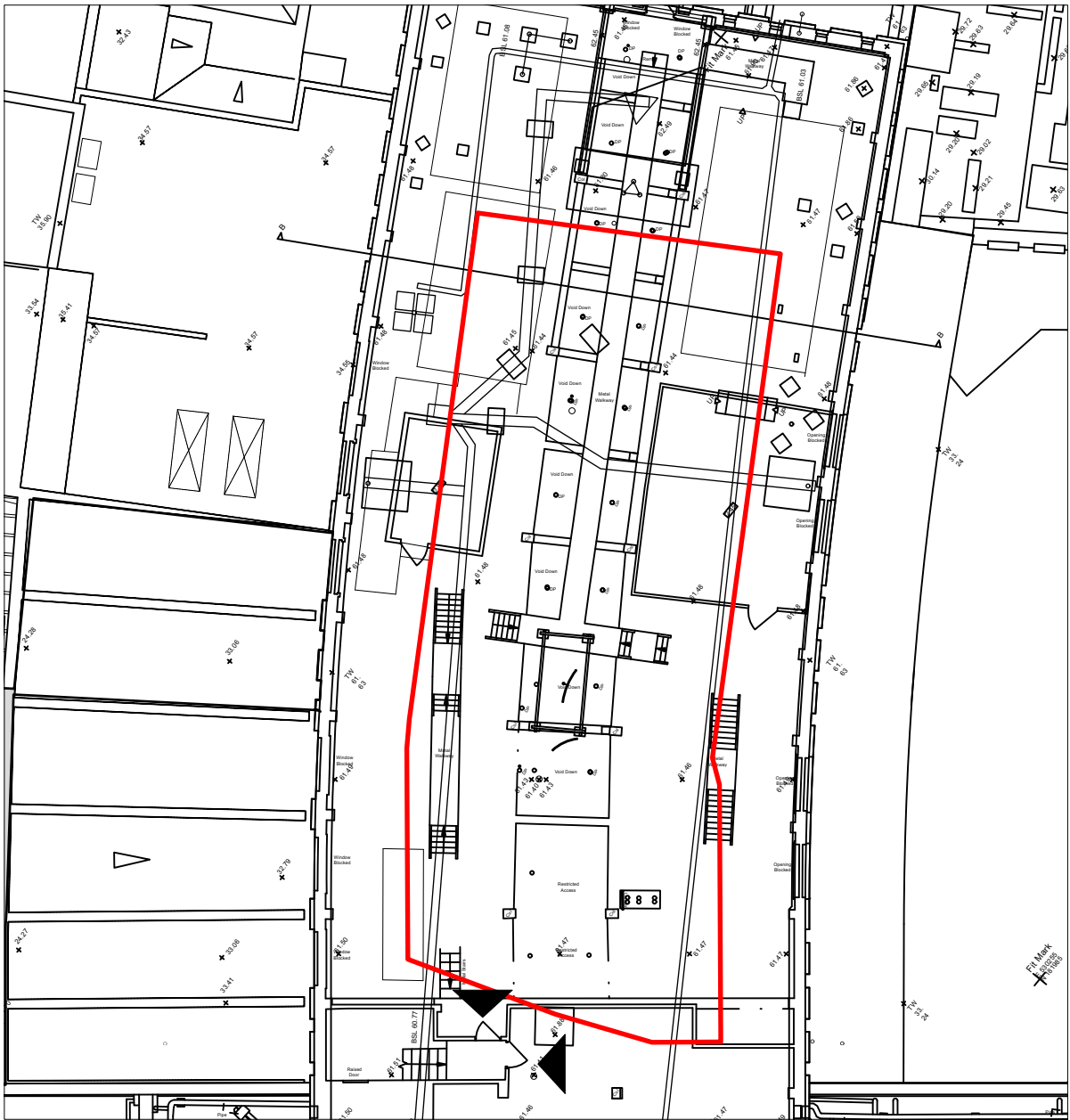
PHOTOVOLTAIC PANELS LOCATION

ACCESS TO ROOF

0 TOTAL NUMBER OF PV PANELS

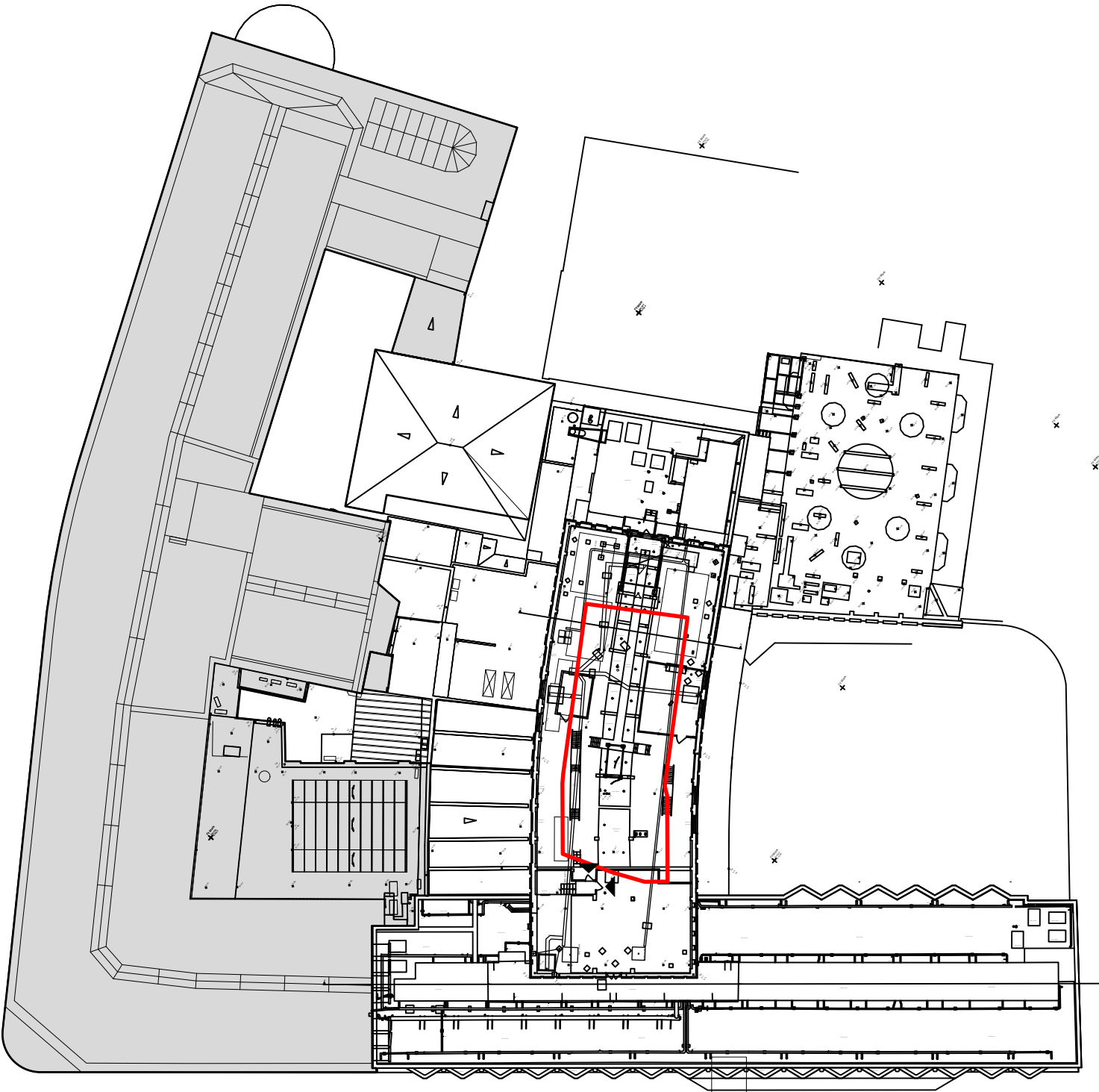
SOURCES:

Survey supplied by Maltby Surveys. Original data received on April 2018, with updates in October 2018 and March 2019.



PHOTOVOLTAIC PANELS LOCATION

1:200 @ A3





KEY

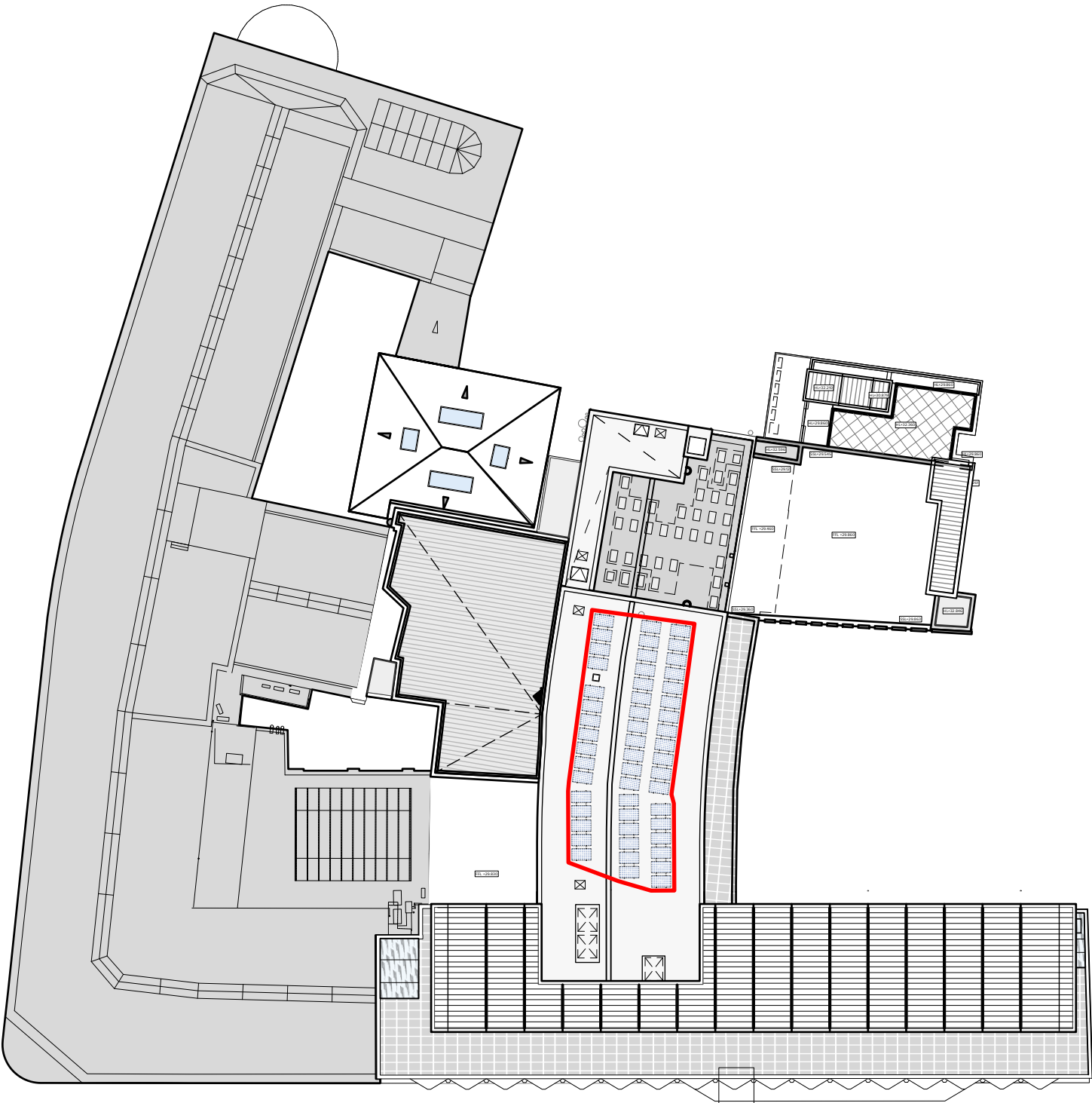
PHOTOVOLTAIC PANELS LOCATION

ACCESS TO ROOF

52 TOTAL NUMBER OF PV PANELS

SOURCES:

Survey supplied by Maltby Surveys. Original data received on April 2018, with updates in October 2018 and March 2019.



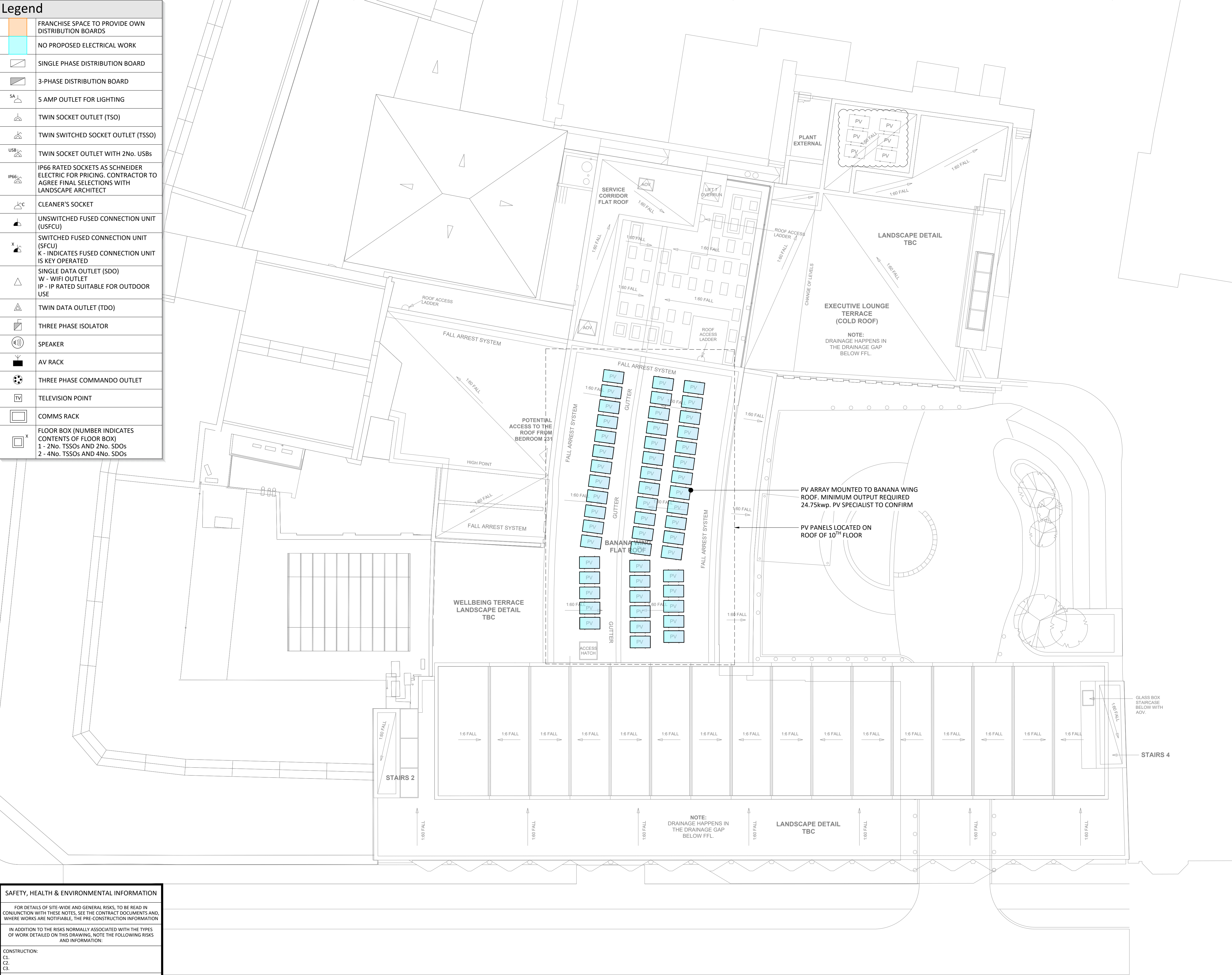
PHOTOVOLTAIC PANELS LOCATION

1:200 @ A3





Legend	
	FRANCHISE SPACE TO PROVIDE OWN DISTRIBUTION BOARDS
	NO PROPOSED ELECTRICAL WORK
	SINGLE PHASE DISTRIBUTION BOARD
	3-PHASE DISTRIBUTION BOARD
	5 AMP OUTLET FOR LIGHTING
	TWIN SOCKET OUTLET (TSO)
	TWIN SWITCHED SOCKET OUTLET (TSSO)
	TWIN SOCKET OUTLET WITH 2No. USBs
	IP66 RATED SOCKETS AS SCHNEIDER ELECTRIC FOR PRICING. CONTRACTOR TO AGREE FINAL SELECTIONS WITH LANDSCAPE ARCHITECT
	CLEANER'S SOCKET
	UNSWITCHED FUSED CONNECTION UNIT (USFCU)
	SWITCHED FUSED CONNECTION UNIT (SFCU) K - INDICATES FUSED CONNECTION UNIT IS KEY OPERATED
	SINGLE DATA OUTLET (SDO) W - WIFI OUTLET IP - IP RATED SUITABLE FOR OUTDOOR USE
	TWIN DATA OUTLET (TDO)
	THREE PHASE ISOLATOR
	SPEAKER
	AV RACK
	THREE PHASE COMMANDO OUTLET
	TELEVISION POINT
	COMMS RACK
	FLOOR BOX (NUMBER INDICATES CONTENTS OF FLOOR BOX) 1 - 2No. TSSOs AND 2No. SDOs 2 - 4No. TSSOs AND 4No. SDOs



### Notes:

- THIS DRAWING SHALL BE READ IN CONJUNCTION WITH ALL OTHER DRAWINGS, SPECIFICATIONS, SCHEDULES AND BUILDING MODELS INCLUDING SCHEMATICS. THE CONTRACTOR SHALL REFER TO THE ARCHITECTS DRAWINGS FOR SETTING OUT DETAILS/DIMENSIONS.
- THE ELECTRICAL SERVICES INSTALLATIONS ARE DESIGNED TO COMPLY FULLY WITH THE BUILDING REGULATIONS STANDARDS, AND ARE DESIGNED IN ACCORDANCE WITH THE RECOMMENDATIONS OF THE CIBSE GUIDES, AS ISSUED BY THE CHARTERED INSTITUTION OF BUILDING SERVICES ENGINEERS.
- REFER TO THE ARCHITECTS DRAWINGS FOR DETAILS OF ALL BUILDING FIRE COMPARTMENTATION BARRIERS. ANY SERVICES PENETRATING THE FIRE COMPARTMENT SHALL BE FIRE SEALED USING THE APPROVED PENETRATION DETAIL.
- ALL PENETRATIONS THROUGH FIRE WALLS SHALL BE FIRE STOPPED TO MAINTAIN THE FIRE INTEGRITY OF THE FIRE WALL. ALL SLAB PENETRATIONS TO HAVE FIRE STOPPING TO MAINTAIN THE INTEGRITY OF THE FIRE RATED SLAB. THE CONTRACTOR SHALL MAKE GOOD ALL PENETRATIONS TO THE APPROVAL OF BUILDING CONTROL.
- THIS DRAWING SHALL NOT BE USED FOR INSTALLATION. THE ELECTRICAL SERVICES CONTRACTOR SHALL BE RESPONSIBLE FOR PRODUCTION OF COORDINATED INSTALLATION DRAWINGS CHECKED WITH ACTUAL SITE DIMENSIONS.
- ALL DIMENSIONS WHERE INDICATED ARE IN MILLIMETRES UNLESS STATED OTHERWISE. ALL DIMENSIONS SHALL BE CHECKED ON SITE PRIOR TO COMMENCEMENT OF ANY WORKS.
- ALL CABLES TO BE WITHIN VOIDS UNLESS OTHERWISE STATED.

### Legend

CEF	- CAR PARK EXHAUST FAN
EH	- ELECTRIC HEATER
FCU	- FAN COIL UNIT
F	- FAN
MVHR	- MECHANICAL VENTILATION WITH HEAT RECOVERY
SEF	- SMOKE EXTRACT FAN
SMAF	- SMOKE MAKE-UP FAN
AHU	- AIR HANDLING UNIT
HDR	- HAIR DRYER
HS	- HAIR STRAIGHTENER
CU	- CONDENSING UNIT
FSDP	- FIRE SMOKE DAMPER PANEL
FAP	- FIRE ALARM PANEL
FS	- FIREMAN'S SWITCH
HD	- HAND DRYER
EF	- EXTRACT FAN
AOV	- AUTOMATIC OPENING VENT ACTUATOR
FSD	- FIRE SMOKE DAMPER
P	- PUMP
CATS	- CATS PUMP
SV	- SMOKE VENTILATION
IF	- IMPULSE FAN
L	- LIFT
BS	- BRANCH SELECTOR BOX
PD	- POWERED DOOR
DHO	- DOOR HOLD OPEN
AC	- ACCESS CONTROL DOOR
DR	- DISABLED REFUGE
DWC	- DISABLED WC CALL POINT
MCP	- MECHANICAL CONTROL PANEL
CCTV	- CCTV (PROVIDES POE)

C02	08.01.24	RAJ	PXM	AXB	PV ON LOWER ROOF REMOVED.
C01	08.12.23	CAB	PXM	AXB	MAJOR AMENDMENTS. NEW NOTES ADDED & SYMBOLS RELOCATED

Rev	Date	By	Chk	Aprvd	Description
-----	------	----	-----	-------	-------------

#### PROJECT

Imperial Hotel  
London

#### CLIENT



www.methodllp.com Swindon Tel: 01793 822044

#### DRAWING TITLE

Small Power & Data Services  
Roof Level

#### STATUS

A4 - SUITABLE FOR STAGE 4A D&B

DATE	SCALE	DRWN BY	CHK BY	APVD BY
03.02.23	1:150 - A1	ARG	PXM	AXB

DRAWING NUMBER	REVISION No.
1992LIH-MET-00-R10-DR-E-6214	A4 - C02

Scaling Note: Do NOT scale from this drawing.

#### SAFETY, HEALTH & ENVIRONMENTAL INFORMATION

FOR DETAILS OF SITE-WIDE AND GENERAL RISKS, TO BE READ IN CONJUNCTION WITH THESE NOTES, SEE THE CONTRACT DOCUMENTS AND, WHERE WORKS ARE NOTIFIABLE, THE PRE-CONSTRUCTION INFORMATION

IN ADDITION TO THE RISKS NORMALLY ASSOCIATED WITH THE TYPES OF WORK DETAILED ON THIS DRAWING, NOTE THE FOLLOWING RISKS AND INFORMATION:

##### CONSTRUCTION:

C1.  
C2.  
C3.

##### DISMANTLING/DEMOLITION (FUTURE):

D1.  
D2.  
D3.

IT IS ASSUMED THAT ALL WORKS WILL BE CARRIED OUT BY A COMPETENT CONTRACTOR WORKING, WHERE APPROPRIATE, TO AN APPROVED METHOD STATEMENT

THIS DRAWING IS NOT TO BE USED FOR CONSTRUCTION. THIS DRAWING SHALL COMPLETE THE DESIGN BASED ON THE INFORMATION PROVIDED ON THIS DRAWING, THE M&E SPECIFICATION, THE ROOM DATA SHEETS AND THE OTHER DOCUMENTS COMPILING THE EMPLOYER'S REQUIREMENTS

THIS DRAWING SHALL  
BE PRINTED IN COLOUR