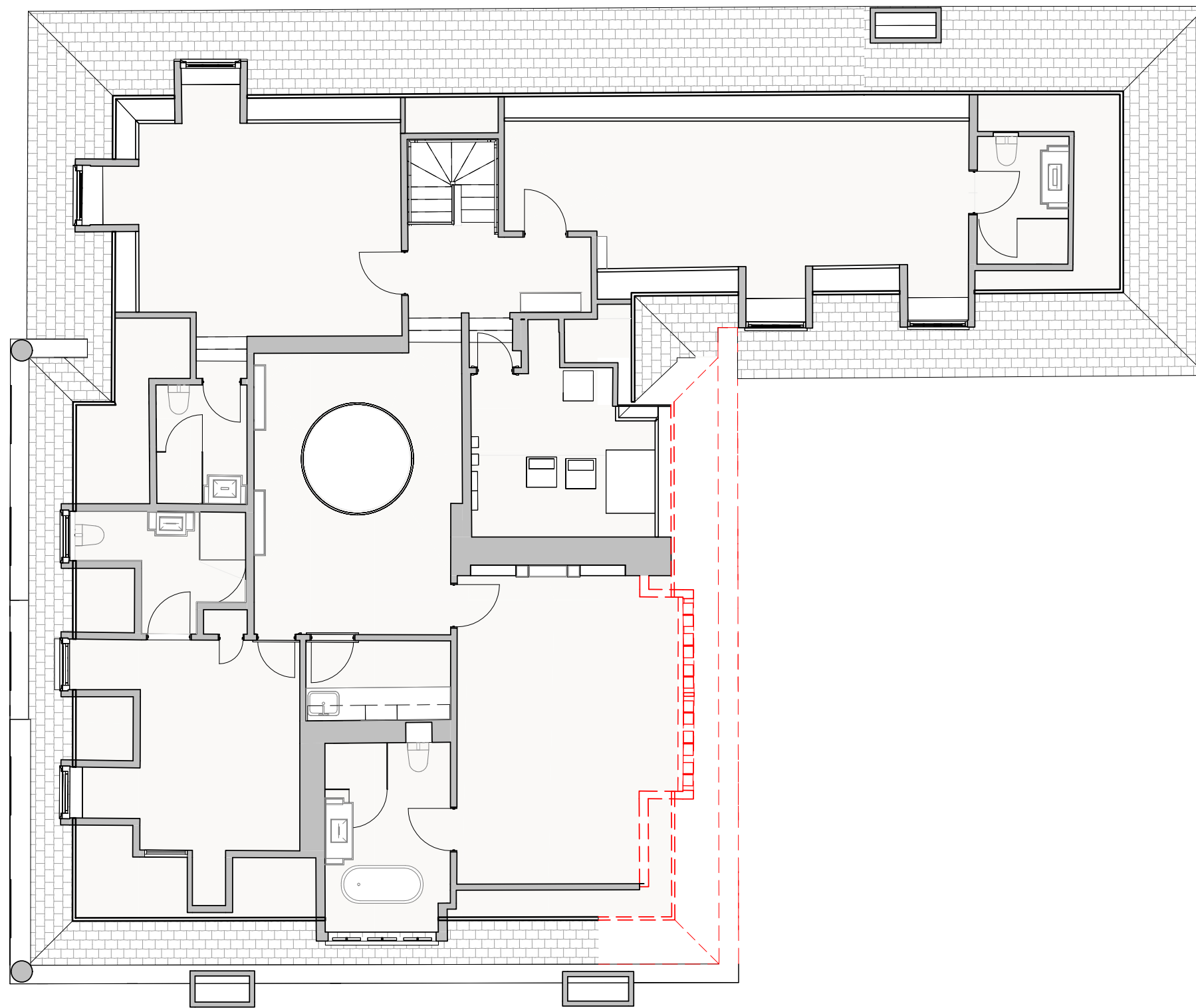
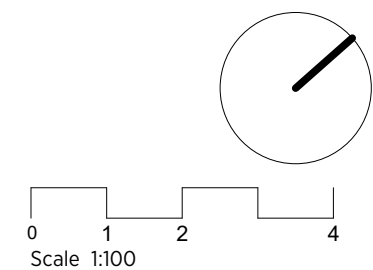


GENERAL NOTES:
 This drawing is copyright of KSR architects.
 This drawing must be read in conjunction with the Designer's Risk Assessment, specification and all other relevant documentation and drawings.
 KSR architects accept no liability for any expense, loss or damage of whatsoever nature and however arising from any variation made to this drawing or in the execution of the work to which it relates which has not been referred to them and their approval obtained.
 Areas are based on unchecked survey and are approximate only.
 Do not scale from this drawing or the digital data, only figured dimensions are to be used. Refer to linear scale for guidance.
 Check all dimensions on site prior to carrying out any works and advise any discrepancy



DEMOLITION KEY

- TO BE DEMOLISHED
- PROPOSED OPENINGS / NEW ELEMENTS



KSR ARCHITECTS & INTERIOR DESIGNERS
 KSR Architects LLP mail@ksrarchitects.com
 14 Greenland Street t: +44 (0)20 7692 5000
 London NW1 0ND www.ksrarchitects.com

21037 - 64 AVENUE ROAD

Demolition Second Floor

Date: 19/07/2024	Status: Planning
Scale: 1:100 @ A3	© KSR Architects
Project Ref: 21037	Drawing No: D120
	Revision: