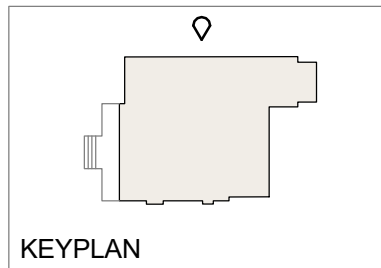




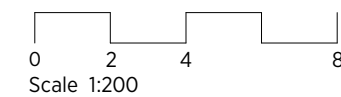
64 Avenue Road

GENERAL NOTES:
 This drawing is copyright of KSR architects.
 This drawing must be read in conjunction with the Designer's Risk Assessment, specification and all other relevant documentation and drawings. KSR architects accept no liability for any expense, loss or damage of whatsoever nature and however arising from any variation made to this drawing or in the execution of the work to which it relates which has not been referred to them and their approval obtained. Areas are based on unchecked survey and are approximate only. Do not scale from this drawing or the digital data, only figured dimensions are to be used.
 Refer to linear scale for guidance. Check all dimensions on site prior to carrying out any works and advise any discrepancy



ANNOTATION KEY

	ASSUMED SITE BOUNDARY LINE
	EXISTING BUILDING LINE
	LINE OF BUILDING OVER
	LINE OF BASEMENT
	PRE APP OUTLINE- Pre-application meeting on 02/02/2024 with Mr Alan Wito - Camden Planning Design and Conservation Officer



KSR ARCHITECTS & INTERIOR DESIGNERS
 KSR Architects LLP
 14 Greenland Street
 London NW1 0ND
 mail@ksrarchitects.com
 t: +44 (0)20 7692 5000
 www.ksrarchitects.com

21037 - 64 AVENUE ROAD

Existing West Long Elevation

Date: 03/31/21 Status: Planning

Scale: 1:200 © KSR Architects

Drawing No: Revision:

21037-E304