

Acorn House

R009 - Children's Playspace Specification

Document Control

Job Title: Acorn House

Job number: 18102

Report title: Children's Playspace Specification

Report number: R009

Revision: 00

Date of issue: 31 May 2022

Purpose of issue: Section 106 Planning

Compiled by: Ayesha Wynne - AHMM Architects
Dante Hall - AHMM Architects

Reviewed by: Gerald Eve - Planning Consultants

Date reviewed: xx xxxx 2022

File name/location I:\London\AHMM Images 2018\18102
Acorn House\5.0 Reports\R009_S106 -
CHILDREN'S PLAYSPACE SPEC

Note

This document is prepared for the sole use of our client for the respective project and no liability to any other persons is accepted by Allford Hall Monaghan Morris Ltd.

© Allford Hall Monaghan Morris Ltd

Contact details:

Ayesha Wynne
awynne@ahmm.co.uk

Allford Hall Monaghan Morris Architects
Morelands
5-23 Old Street
London
EC1V 9HL
T: 020 7251 5261

www.ahmm.co.uk

**ALLFORD
HALL
MONAGHAN
MORRIS**

Children's Playspace

Design Strategy

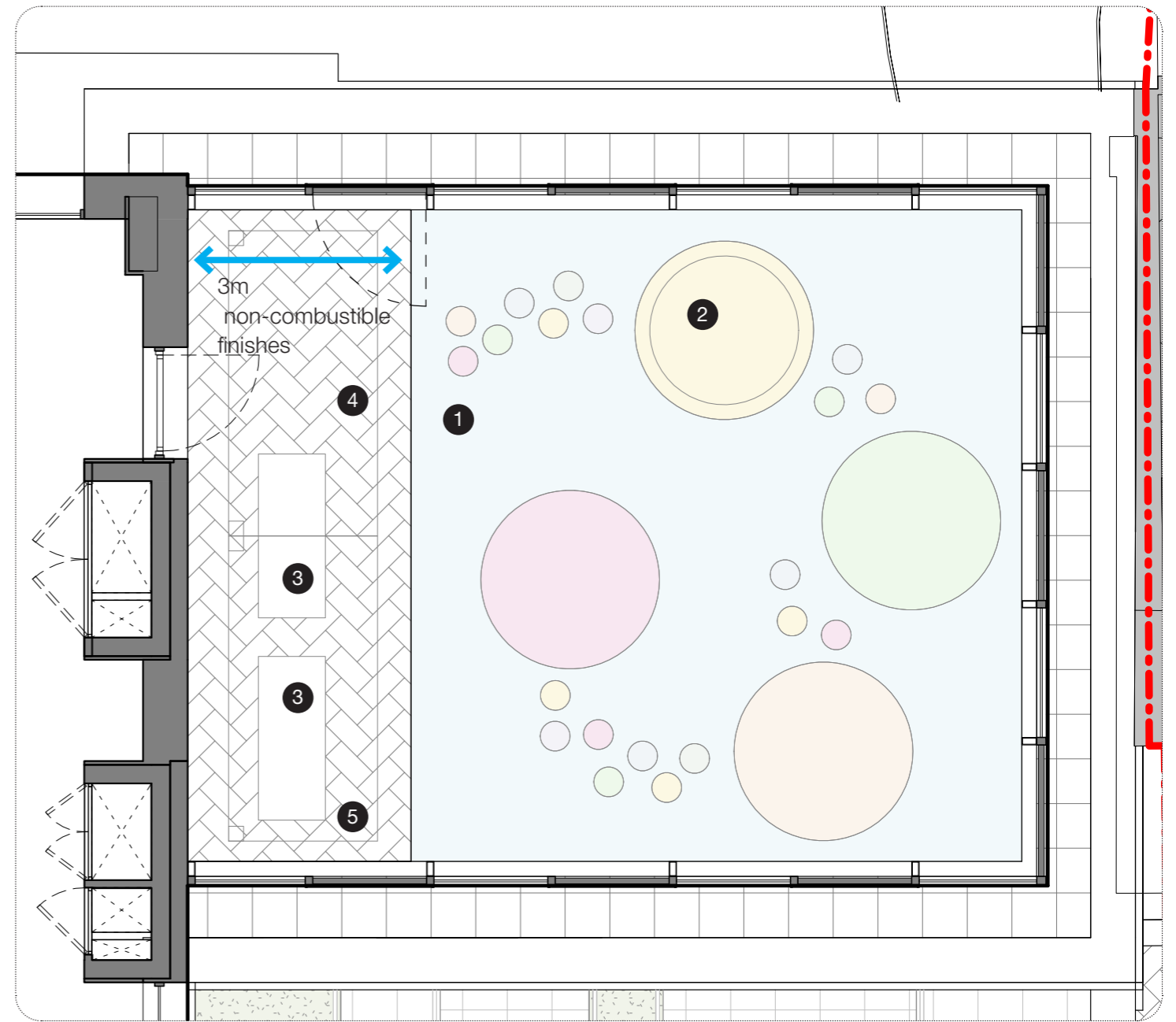
S106 Requirements

The S106 agreement stipulates the following requirements for the Children's Playspace Specification:

- 86sqm outdoor playspace
- aimed primarily at under 5s
- open to the sky but enclosed by geometric patterned walls to provide safe enclosure and shelter from traffic noise
- identifies appropriate facilities for 'doorstep play', to include:
 - landscaping
 - climbable objects
 - fixed equipment
 - seating for carers
 - windows on the south elevation to provide views out from the playspace
 - canopied seating to provide places to sit

The Client and Newlon confirmed that sand and water features will not be provided

- 1 Rubber crumb surface in variety of colours
- 2 'Cozy dome' play structure
- 3 Seating - steel bench
- 4 Freestanding canopy
- 5 Concrete pavers



Colourful soft play surface with mounds

Chobham Primary School, Newham, AHMM



'Cozy Dome' climbing structure



Seating for adults

e.g. Broxap Sherwood bench (steel, standard colour)



Canopy to cover seating

Burntwood School, Wandsworth, AHMM
Acorn House | Children's Playspace Specification | 27.05.22 | 00

Children's Playspace Visualisation

Play Surface Finishes

The playsurface will have a rubber crumb or similar surface to allow for low level climbing equipment. Mounds in the surface finish will be formed with non-combustible tapered insulation. The surface will need to be further developed at the next stage with a final product carefully selected to minimise combustibility.

A 3m buffer zone of A2 non-combustible surface material was agreed with the BCO adjacent to the facade and so the design was amended to have the seating area adjacent to the facade with paving below. The specification of the canopy and seating will need to be considered to reflect this.

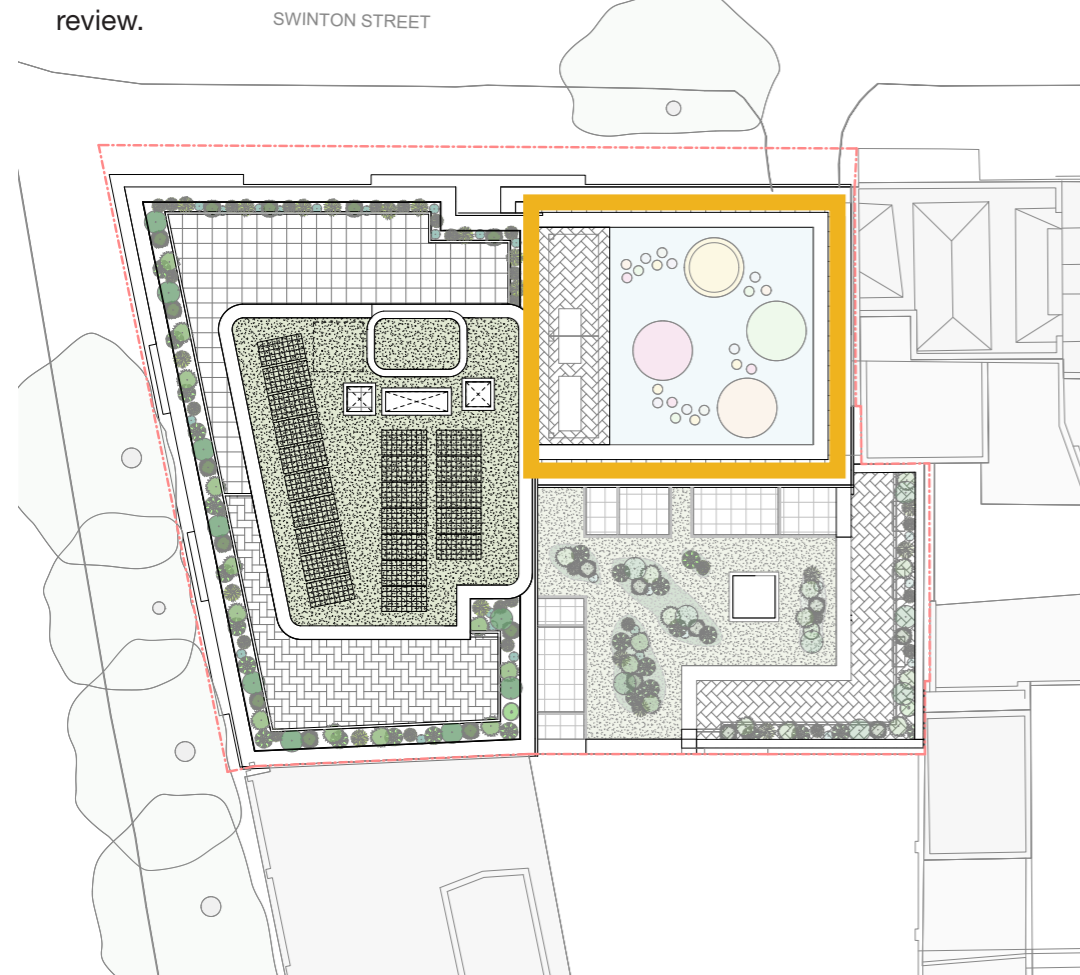


Children's Playspace

Roof Details

Level 06 Playspace Area

- PIR insulation to B-Roof-T4 standard agreed by Freya Fire/BCO on the basis this is allowed under BS8579 - Terraces, Flat Roofs, Balconies.
- Insulation shown at depth of 2200mm to achieve 0.10 W.m²k - Swapping to Rockwool but maintaining depth found to reduce roof u-value to 0.15 W.m²k which would not meet Part L targets.
- BCO previously requested A2 classification surface finishes only but has accepted in principle a rubber crumb play surface provided a 3m buffer against the facade is provided of class A2.
- Rubber crumb product specification to be further investigated at the next workstage to ensure highest possible fire performance achieved.
- Cement board layer agreed with Freya Fire below rubber crumb to provide separation of layers. Maximum permissible drainage gaps to be developed.
- Slab depth reduced to 250mm during structural review.



L06 BUILD UP

70mm permeable rubber crumb/bound gravel play surface with 20mm cement board below over 40mm drainage layer - to be developed with Landscape architect

220mm PIR warm room insulation - designed to zero falls
 Waterproofing membrane
 Vapour barrier
 250mm slab

