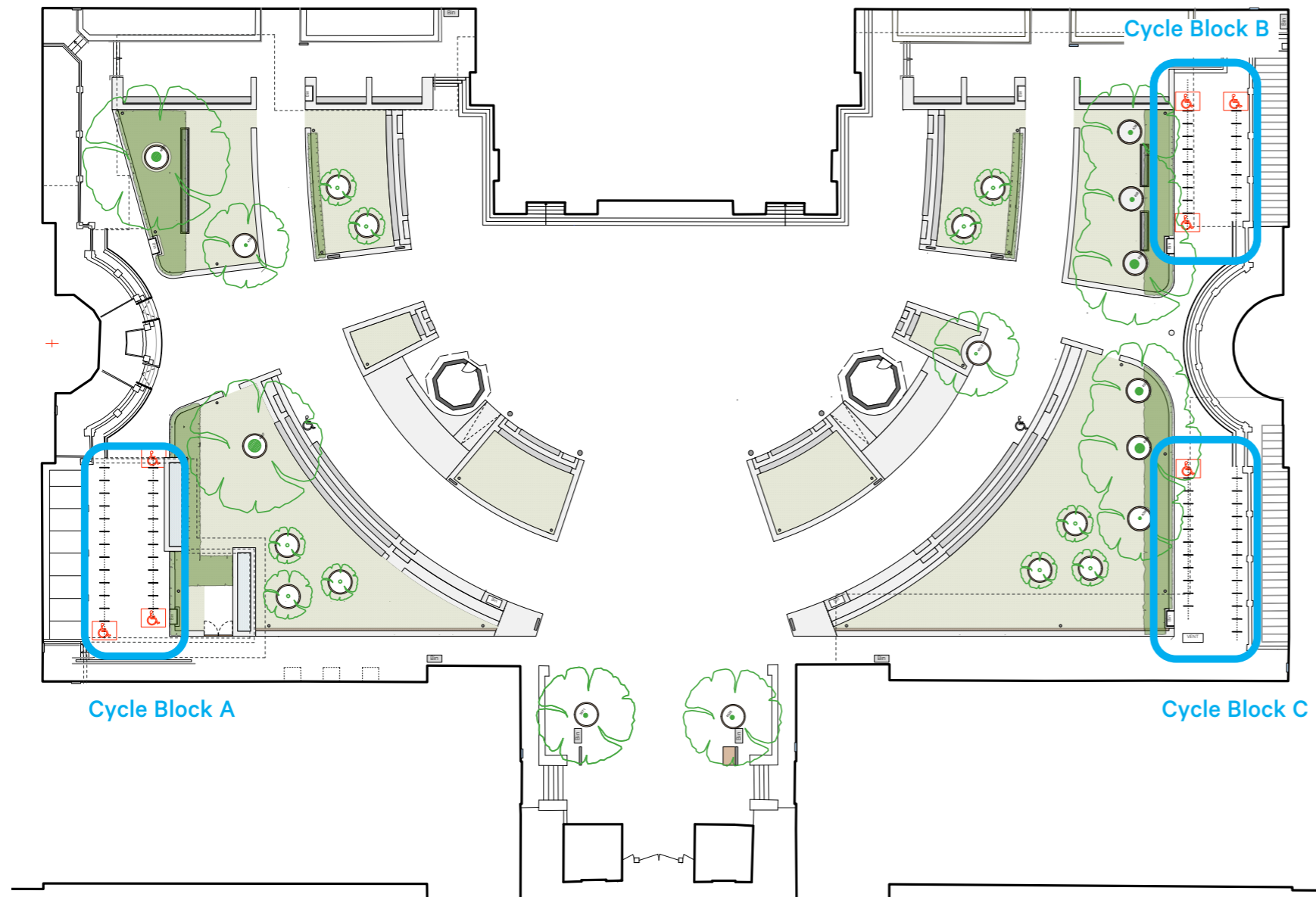


## 1.2 Main Quad: Design Proposals



Existing cycle parking on Main Quad forms a significant part of the visual clutter within the landscape, with cycle stands and cycles located in visually prominent areas - including around the observatories and either side of the Portico. The existing cycle stands are mostly on skids and not fixed down, resulting in an ad hoc and often 'messy' arrangement.

The design proposal incorporates cycle storage in a visually unobtrusive, double banked arrangement at each side of the quad adjacent to the Slade and South Wing, visually screened by hedging and in a manner that is sympathetic to the setting and special significance of the adjacent listed buildings.

The proposed layout incorporates 134nr cycle parking spaces, including 7nr enlarged accessible spaces. This is an increase of 4nr cycle parking spaces compared to the existing provision. However, the improvement in cycle parking provision can be seen not only in quantitative terms but also in the provision of well organised banks of cycle parking with dedicated enlarged accessible spaces.

Careful consideration has been given to the design of the cycle stands in terms of their shape, materiality and colour. They will incorporate tapping rails in order to meet accessibility requirements.

Proposed Layout Showing Proposed Cycle Storage

Proposed total number of Cycles on Main Quad = 134



Sheffield Cycle Stands (tapping rail not shown)