

WORKS IN EACH AREA -

SITE OFFICE - RETAIN RAF, NEW CARPET, RETAIN CEILING GRID, NEW CEILING TILES, NEW KITCHENETTE, POWER AND LIGHTING, HEATERS, REPAIR WATER DAMAGED WALL LININGS, WHITE PAINT TO WALLS.

SITE CANTEEN - VINYL FLOORING THROUGHOUT, REPAIR WATER DAMAGED WALL TO RIGHT HAND SIDE, RETAIN CEILING GRID, NEW CEILING TILES, TEA POINT, POWER AND LIGHTING, HEATERS, WHITE PAINT TO WALLS.

SUBBIES OFFICE 1 - 18MM PLY TO FLOOR, NEW CARPET, POWER, LIGHTING, HEATERS.

SUBBIES OFFICE 2 - POWER, LIGHTING, HEATERS.

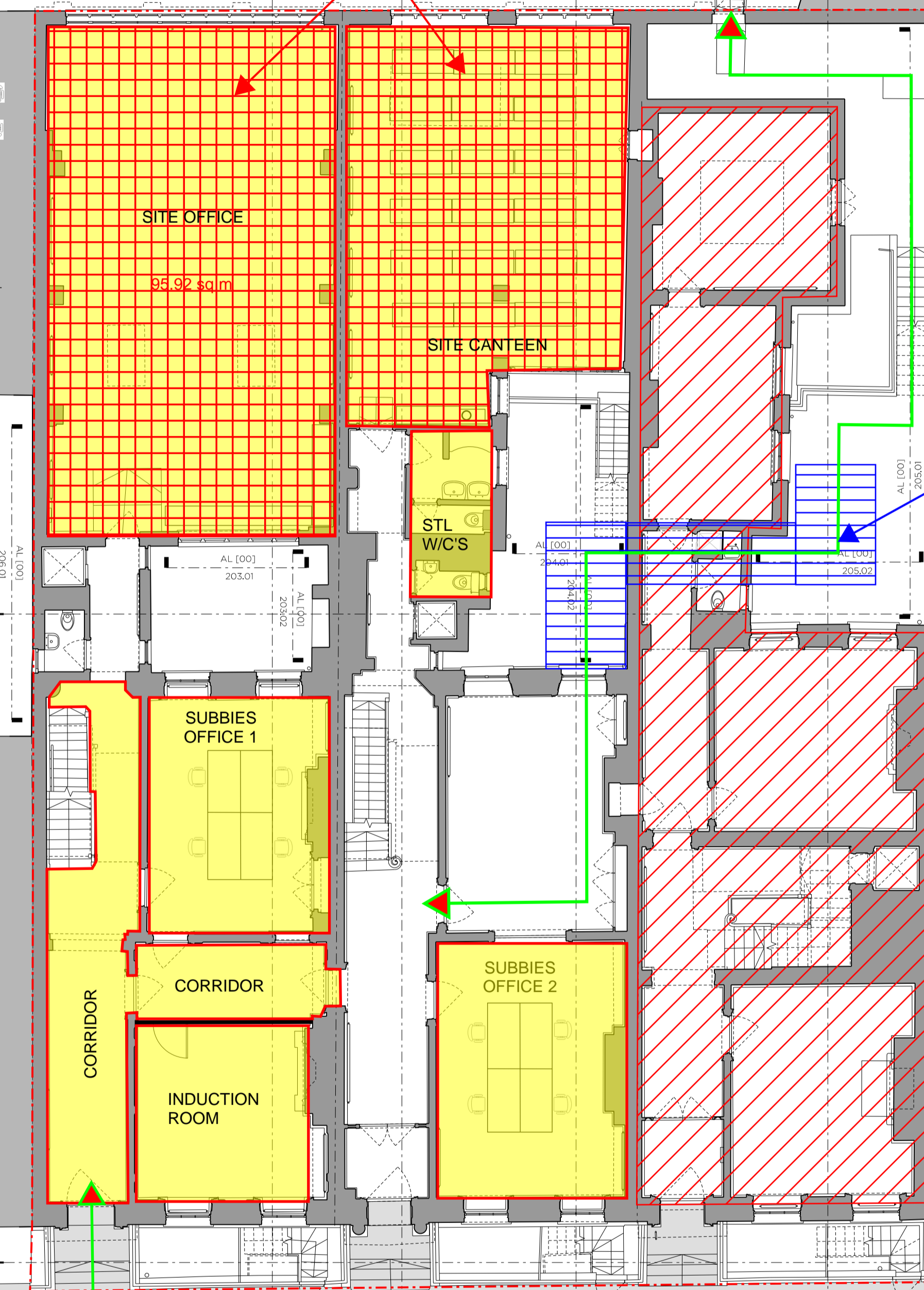
CORRIDOR - 18MM PLY TO FLOOR, VINYL FLOOR COVERING, LIGHTING.

STL W/C'S - REPLACE TOILETS, LIVEN EXISTING SERVICES.

INDUCTION ROOM - 18MM PLY TO FLOOR, NEW CARPET, POWER, LIGHTING, HEATER.

RETAIN CEILING GRID,
REPLACE TILES.

ACCESS TO SITE VIA
HACKEY STAIR FROM
GROUND FLOOR LEVEL IN
NUMBER 7 TO NUMBER 8
COURTYARD. STL TO
REMOVE FRENCH DOORS
AND STORE FOR
REINSTATEMENT UPON
VACATING BUILDING.



ENTRANCE

S O U T H A M P T O N P L A C E

DRAWING NOTES

REVISION DATE NOTE

TEAM

CLIENT Workman
COST CONSULTANT Gleds
MECH. ENGINEER Waterman Group
ELEC. ENGINEER Waterman Group
STRUCT. ENGINEER HTS
PLANNING CONSULTANT HGH Consulting

GENERAL NOTES

1. Do not scale from this drawing.
2. All dimensions to be checked on site by the contractor and such dimensions to be his responsibility.
3. Report all drawing errors, omissions and discrepancies to the architect.
4. This document may be issued in an uncontrolled CAD format to enable others to use it as background information to make alterations and/or additions. In that instance the file will be accompanied by a PDF version. It is for those making such alterations and additions to ensure that they make use of current background information. Gibson Thornley Architects accepts no liability for any such alterations or additions to the background information or arising out of changes to background information which occur prior to alterations or additions being made.

LOCATION



GIBSON THORNLEY

Gibson Thornley Architects Limited
No. 4 The Hangar
Perseverance Works
25-27 Hackney Road
London E2 7NX
www.gibsonsthornley.com
info@gibsonsthornley.com
+44 (0)20 7729 7064

JOB TITLE
HOLBORN LINKS: 6-8 SOUTHAMPTON PLACE
DRAWING TITLE
EXISTING GROUND FLOOR PLAN

DRAWN BY SAOD CHECKED MJT SCALE 1:100@A1 1:200@A3 STATUS PLANNING

PROJECT 20023 ZONE - TYPE AL CLASSIFICATION [00] DRAWING NO 101 REVISION P04