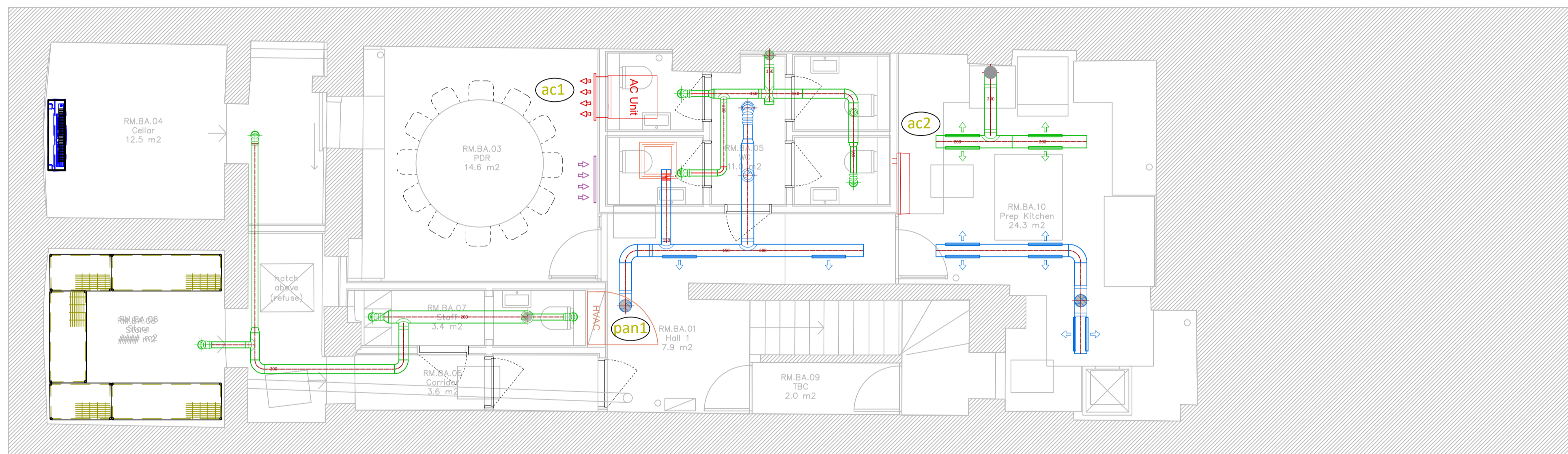


GROUND FLOOR



BASEMENT

Specific Extract Flow Rate Calculation Sheet							
Based on the THERMAL CONVECTION METHOD as recommended in HVCA Specification DW172:2018							
Site:	30 charlotte street	For:	mjmk				
Floor Level:	ground	Job No.:	1037-200				
Area:	main kitchen	Client Drg No.:	8263-001				
Canopy / Ceiling Ref:	main island	Date:	06/07/2021				
Canopy Type:	10.0H Wall-Type, Island Mounted (open both ends)	Assessed By:	ef				
Item	Cooking Equipment	Power	Plan Size		DW172 SEFR Method		
			X(m)	Y(m)	Area (m ²)	TCC (m ³ /m ²)	Flow Rate (m ³ /s)
	Open Grill / BBQ / Charcola Pit, Solid Fuel		1.40	0.60	0.84	0.96	0.81
	Open Grill / BBQ / Charcola Pit, Solid Fuel		1.80	0.60	1.08	0.96	1.04
	Salamander Grill, Gas		0.75	0.50	0.375	0.75	0.28
Theoretical Flow Rate: 2.12 m ³ /s							
X Factor for Canopy / Ceiling Type: 1.60							
Capture Jet Efficiency factor: Yes							
Specific Extract Flow Rate: 2.89 m ³ /s							
Make-up-Air Ratio: 85%							
Make-up-Air Flow Rate: 2.46 m ³ /s							

Specific Extract Flow Rate Calculation Sheet							
Based on the THERMAL CONVECTION METHOD as recommended in HVCA Specification DW172:2018							
Site:	30 charlotte street	For:	mjmk				
Floor Level:	ground	Job No.:	1037-200				
Area:	main kitchen	Client Drg No.:	8263-001				
Canopy / Ceiling Ref:	wall	Date:	06/07/2021				
Canopy Type:	05 Passover Type (open one end)	Assessed By:	ef				
Item	Cooking Equipment	Power	Plan Size		DW172 SEFR Method		
			X(m)	Y(m)	Area (m ²)	TCC (m ³ /m ²)	Flow Rate (m ³ /s)
	Induction Hob / Ceramic Stove, Electric	Electric	0.80	0.80	0.64	0.20	0.13
Theoretical Flow Rate: 0.13 m ³ /s							
X Factor for Canopy / Ceiling Type: 1.10							
Capture Jet Efficiency factor: Yes							
Specific Extract Flow Rate: 0.12 m ³ /s							
Make-up-Air Ratio: 85%							
Make-up-Air Flow Rate: 0.10 m ³ /s							

equipment schedule

revision	~	client	mjmk	total hvac	108	the fellerman partnership
date	11/07/2021	site	30 charlotte street	total TFP panel	108	

item	description	model	location	size	weight	noise	power supply	fed from panel	108			power	duty	control requirement	filter + pump size	comment
									L1	L2	L3					
EF1	kitchen extract			1200 x 1200 x 1900	450		45/3/50		11	11	11		3.6 m ³ /s @ 800			
EF2	general extract	k200f	first floor	336x231x200dia	4.8	48	230/1/50						0.27 @ 100			
EF3	wc extract	k150	first floor	336x231x150dia	4.8	48	230/1/50			0.3			0.15 @ 100			
SF1	supply fan	80-630-3-4	kitchen	800x800x800	105	53	415/3/50		8	8	8	4.4	2.8 @ 600			
EHB	electric heater battery	bespoke	plant housing	600 x 600 x 450	25	--	415/3/50		50	50	50	36				
FH1	filter housing	b12ef	plant housing	1200 x 600 x 600	30	--	--									
AC1	cassette	RM561MUT-E	pdr	256 x 757 x 575	15	59	CU1									
AC2	wall mount	RM561RTP-E	kitchen	320 x 1050 x 250	14	57	CU2									
AC3	ducted fan coil unit	GM901BTP-E	ground floor	275 x 1400 x 750	40	52	CU3									
AC4	ducted fan coil unit	GM901BTP-E	ground floor	275 x 1400 x 750	40	52	CU4									
AC5	cassette	RM561UTP-E	first floor	256 x 840 x 840	20	47	CU5									
AC6	cassette	RM401MUT-E	first floor	256 x 575 x 575	15	56	CU6									twin split
AC7	cassette	RM401MUT-E	first floor	256 x 575 x 575	15	56	CU6									twin split
CU1	cassette - condenser	GM561ATP-E	plant housing	550 x 780 x 290	40	63	230/1/50				7.93		5.3			
CU2	wall mount - condenser	GM561ATP-E	plant housing	550x780x290	40	63	230/1/50				7.93	--	5.3			
CU3	FCU - condenser	GM901ATP-E	plant housing	630 x 800 x 300	68	70	230/1/50			14.5			9			
CU4	FCU - condenser	GM901ATP-E	plant housing	630 x 800 x 300	68	70	230/1/50			14.5			9			
CU5	cassette - condenser	GM561ATP-E	plant housing	550 x 780 x 290	40	63	230/1/50				7.93		5.3			
CU6	twin split cassette - condenser	GM901ATP-E	plant housing	550 x 780 x 290	44	65	230/1/50			10.4			7.7			
ODH1	over door heater	C1000E	ground floor	1137 x 275 x 198	16	55	415/3/50		13.7	13.7	13.7		4.5/9			
CAN1	island canopy	halton	ground floor	5000 x 1800 x 555	375	--	230/1/50					3				with coalescers
CAN2	wall canopy	halton	ground floor	2000 x 1000 x 555	125	--	230/1/50					2				with coalescers
PAN1	control panel	TFP	TBC	1200 x 1000 x 300	250	--	415/3/50									125A TP+N
N1	fire alarm connection from panel															

Client	MJMK		
Project	30 CHARLOTTE STREET - LISBOETA		
Title	BASEMENT + GROUND - PROPOSED		
Contract No.	1037	Drawing No.	TFP-1037-201
Scale	1:50:A1 1:100:A3	Date	01/07/2021